

Progressive Is Name Selected For Third Party

State and Congressional Tickets Not Named—Liquor Question Is Evaded In Platform.

By EDWARD BLACK, Staff Correspondent Omaha Bee. Grand Island, Neb., Dec. 9.—(Special Telegram.)—The "Progressive Party" was organized at a mass convention here yesterday. The widely varying ideals of the membership of the convention kept the assemblage in almost constant debate and at a late hour with only 265 of the over 600 attendants at the meeting present a sine die adjournment was taken without nominating a state ticket.

The following state executive committee was named from congressional districts: C. E. Whitaker, First; John F. Murphy, Second; Mrs. Marie Weckes, Third; Arthur G. Wray, Fourth; T. J. Ellishury, Fifth; Henry Apking, Sixth; F. L. Bollen, at large.

The committee elected the following officers: J. H. Edmisten, North Platte, chairman; W. H. Green of Omaha, secretary; K. C. Knudson of Genoa, treasurer.

Evade Liquor Question. Platform was adopted without amendments. E. L. Stolley of Grand Island, precipitated the liquor question by offering a resolution which condemned "invasion of homes" in enforcement of prohibition. His effort failed.

No Candidates Named. At a late hour, with only 265 delegates present, the question of nomination of candidates was before the house.

Resolutions Reported. The resolutions committee reported in substance as follows. Present party in state and national government must be terminated; government must be freed from Wall street and domination by privileged classes abolished; references made to profiting, excessive profits, and equal opportunity to all.

Gage County Farm Union Names Officers for Year. Beatrice, Neb., Dec. 9.—(Special.)—At the annual meeting of the Gage County Farmers' union these officers were elected: President, Marce Witzenburg of Blue Springs; vice president, L. M. Smith of Wynmore; secretary-treasurer, Frank Malicky of Barneston. W. H. Dale of the United Grain Growers association gave the principal address, stating that the "big industries" of the country were partly responsible for holding the farmers down.

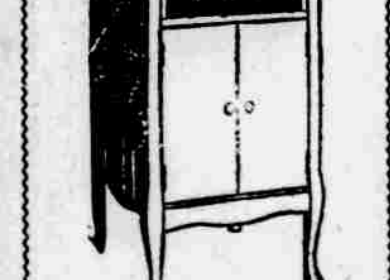
Teachers' Examination Taken by 107 at Neligh. Neligh, Neb., Dec. 9.—(Special.)—County Superintendent C. A. Mohrman reports that the teachers' examination of last week was the largest since he has been in office. One hundred and seven teachers and prospective teachers wrote on the subjects required for the certificate. Of this number about 50 were writing for the first time.

Bowen's Value-Giving Store

15 More Days Then Christmas

and why not plan on pleasing the entire family by having a

Columbia GRAFONOLA



in your home on Christmas morn? It is one gift that will be enjoyed every day and every evening throughout the year.

Columbia Save from Grafonolas \$2.50 to \$100 Priced at \$30.00, 45.00, 60.00, 85.00, 100.00, 125.00, 140.00, 150.00, 175.00	Save by buying the one you want at Bowen's
--	--

It pays to read Bowen's small ads. **Bowen's** Howard St. between 15th and 16th Sts.

Wall Street Domination Opposed In Progressive Party Platform

Grand Island, Neb., Dec. 9.—(Special.)—The following platform and program was adopted by the progressive party here in mass convention yesterday:

The progressive party this day organized in the city of Grand Island invites public spirited, loyal and progressive citizens to join with them in a supreme effort to make our state and national governments more truly governments of the people functioning more responsibly and impartially in the interests of all the people.

As a basis for our common effort we declare our belief in the following principles:

Party Principles. The present almost insane orgy of public extravagance, state and national, must be terminated and taxation at once reduced to the absolute necessities of a government honestly and economically administered. Our government must be freed from further control by Wall street. Domination by privileged classes must not only be abolished but class rule made forever impossible.

Profiteering, no longer confined to a few monopolistic corporations, but so widespread as to threaten production itself, must be crushed and excess or unreasonable profits not merely be taxed but must be absolutely prevented or our government will permanently become an aristocracy of wealth and "equal opportunity for all" cannot be realized.

Prices for farm products must not be permitted to go below the cost of production, plus a reasonable profit. Wages must not be permitted to go below the cost of living at American standards, with a margin for food.

Government Rail Control. Railroads must not be the sole beneficiaries of government guarantees of profits, based on inflated capital, but all carriers, whether of freight, passengers or intelligence, should, like the mails, be operated at cost by governmental agencies for the benefit of all the people.

Credits must no longer be left to private control and manipulation, but should be taken over by the government in the interest of all the people; moreover, the peoples' credit, whether of community, state or nation, must not be so restricted as to prevent success in emergencies to basic industries or relief from unemployment.

To effectuate our purposes, we declare the following as our present program of action:

1. Government ownership of railroads and of all other means of communication, with a voice and reasonable share of compensation to the manhood as well as the capital needed in its operation.

2. Making government more responsive to the will of the people by a presidential primary, a referendum on the question of a declaration of war, except upon invasion, application of initiative and referendum to national legislative questions and of the recall of public officials to both state and nation; also by the abolition of the party circle and by the establishment of open primaries.

Reduction of Taxes.

3. Immediate and drastic cuts in

public expenditures and taxes, including abolition of the dual system of the code and elective departments of state government; the cutting out of waste and extravagance of the capitol commission and of the state highway expenditures; the discouragement of national laws returning to the state an amount of money for certain causes, upon condition of a like state appropriation, as wrong in principle and a bribery in practice; the reduction of all salaries, subject to legislative regulation, as far as possible relatively to a prewar basis; the abolition of the state railway commission as a useless expenditure and of doubtful public benefit; the abolition of all semi-private appropriations in Nebraska; with a constructive program consisting of war fortunes for payment of war debts and soldier bonus; increase of federal inheritance taxes on large estates, shifting the burden of taxation from the homes and the industry of the people over to the excess profits of monopoly and to the values of the vast natural resources held out of use by profiteering ownership; a state income tax with reasonable exemption, modeled after the Wisconsin act, and with state and national income tax laws discriminating sharply between earned and unearned income.

Organization Report. To the Honorable Delegates of the Progressive Party in Convention Assembled: We, your committee on organization, have given careful consideration to all matters pertaining to the interests of the Progressive party of Nebraska, and to the best methods of carrying on the work which has called it into existence.

It is apparent that the success of this new movement depends materially upon the completeness with which the state is covered, hence the organization must rally into the smallest units of our commonwealth. To prevent the organization from becoming unwieldy because of such ramifications, it must have its authority centralized under one strong executive head.

Having due regard for the foregoing conditions, we, your committee, have devised and hereby respectfully submit the following tentative plan of organization:

1. We recommend that a state central committee composed of two committeemen from each county be elected at the convention. Provided that a man and a woman shall be selected. Provided further that Lancaster county shall have three committeemen and Douglas county shall have five committeemen.

2. We further recommend that an executive committee of seven shall be selected from outside the state central committee, and that there shall be one member from each congressional district and one member from the state at large. It is recommended that both men and women be recognized on this committee.

3. We further recommend that there shall be organized in each precinct of every county a committee comprised of a precinct chairman and four or more additional committeemen as assistants, both men and women to be recognized on these committees.

Name Officers. We further recommend that when the state committee has been selected it shall immediately assemble and proceed to select a state

chairman, a state secretary and a state treasurer who shall have authority to conduct all the business of the progressive party in the campaign and otherwise.

5. Since the strength of an organization is no greater than its financial rating, your committee has given thought to the methods by which the party funds shall be raised. We recognize the principle that for an individual to become deeply interested in the success of an undertaking, he or she must contribute to its treasury. Therefore to promote the principles as advocated by the progressive party, some method must be devised by which individual contributions shall be encouraged.

We suggest that this work largely be conducted by the committees as provided for in the report of your committee on organization.

6. In counties not represented in this convention, the committee on organization recommend that the chairman and secretary of the state committee be authorized to act in such capacity as state committeemen until such time as the county convention in said counties shall meet and select committeemen to fill such positions.

Respectfully submitted, J. H. EDMISTEN, Chairman. VERA ROBERTS, Secretary.

Former State Senator Dies in South Dakota

Norfolk, Neb., Dec. 9.—(Special Telegram.)—Felix J. Hale, ex-state senator, personal friend of W. J. Bryan, veteran of the civil war of the side of the south and prominent in state democratic politics, died at Burke, S. D. Funeral will be held in Battle Creek Saturday. Senator Hale was a pioneer of north Nebraska, settling the original town of Battle Creek. He came here from Virginia.

Rail President Predicts Big Increase in Traffic

Philadelphia, Dec. 9.—The question of making provision for a large increase in the volume of railroad transportation service which, he said, probably would be required in a few years, overshadows everything else in the railroad situation, in its fundamental importance, in the opinion of Elisha Lee, vice president in charge of the eastern region of the Pennsylvania railroad.

Dr. Burhorn's Chiropractic Health Service

My office is located on the fourth floor of the Securities Bldg. and is equipped with private, individual adjusting and rest rooms; also complete Spingraphical laboratory for X-Ray analysis.

We make calls to your home when unable to come to the office. Office adjustments are 12 for \$10.00 or 30 for \$25.00.

Chiropractic teaches that the cause of 95% of human ailments are found within the body—remove the cause and you get well.

Office hours—9 a. m. to 8 p. m. Lady attendants. Call or write for free booklet on Chiropractic today.



414-28 Securities Building Corner 16th and Farnam Sts. Telephone Douglas 8347 Omaha, Neb.

Columbus Man Elected Head of State Hotel Body

W. H. Owen to Guide Destinies of Nebraska Association During Coming Year.

W. H. Owen, Columbus, Neb., was elected president of the Nebraska Hotel association at the annual business meeting and election of officers at the Hotel Rome yesterday afternoon. Other officers elected were: H. Heckert, Lexington, first vice president; M. M. Mohney, Fremont, second vice president; G. A. Denison, Kearney, third vice president; L. R. Harper, Omaha, fourth vice president, and Chris Rocke, Lincoln, fifth vice president.

L. A. Medlar, Omaha, was re-elected secretary and treasurer. R. D. McCadden, Rome, Miller, Omaha, and Ralph Bryant, Hastings, were named on the legislative committee. E. C. Epley, Rome, Miller, G. H. Conant, Omaha, and R. F. Oatman, Red Cloud, were named on the advisory committee.

John F. Egan, Omaha, was re-elected president of the Nebraska-Iowa Greeters at the annual election Friday noon at the Hotel Fontenelle. Psychology and hotel business were combined at the morning session of the Nebraska-Iowa Greeters and Nebraska Hotel association at Hotel Fontenelle.

Hotel business and the question, "Do Clerks Sell Rooms," were discussed. Then Mable Warner Rugg, character analyst and psychologist, gave demonstration of character reading.

Luncheon was served at the Rome hotel at noon yesterday by the Iowa-Nebraska Greeters. The Nebraska Hotel association convened at the Rome in the afternoon. Reports of committees, annual business meeting and an open discussion of hotel business were on the program.

The annual banquet was given at the Fontenelle last night by the Omaha Hotel Men's association.

From September to October employment in New York state factories increased nearly 2 1/2 per cent.

Held for Embezzlement

Norfolk, Neb., Dec. 9.—(Special Telegram.)—Charles McNally, postmaster at Inez, was bound over to the federal court by United States Commissioner Norvel here on a federal charge of embezzling a money order amounting to \$2,397.78.

5,000 of these Cut Glass Water Sets Given Away Free

During Our Store-Wide Year End Clearance

A Set Free With Every \$25 Purchase

Buy on Credit

BEDDEO

1417 Douglas St.

The Fashion

111 SOUTH 16th STREET ACROSS FROM HAYDEN'S

Real Appreciative Xmas Gifts

Fine Silk Camisoles, \$1.50 values 98c

Best Quality Silk Camisoles, regular \$2.25 values \$1.49

100 Fine Leather Pocketbooks, a sample line worth to \$8.50, choice \$2.95

Fancy Lace Collar, Fancy Combs of all kinds, a sample line worth to \$2.50, choice 49c and 98c

300 Fine Georgette Crepe and Fancy Silk Waists, worth to \$6.50, choice \$2.98

Sweaters of all kinds, a sample line worth to \$12.50, all greatly reduced, priced now... \$7.95

Ladies' Coats, Suits, Dresses

offered at a tremendous sacrifice in our Ladies' Ready-to-Wear Department, second floor.

Omaha's Greatest Clothing Sale

Continues With Unabated Confidence

MEN

Never before have you had such an opportunity to secure high grade Suits and Overcoats at such a saving. Hundreds of satisfied customers are leaving our store daily with clothing of the better kind. Only 18 days more before the Federal Baking Company takes possession of our room, forces us to make tremendous reductions on all our Men's and Young Fellows' New Winter—

Suits and Overcoats

SUITS—Of the finest all-wool fabrics, with two pairs of pants. Values up to \$35.00. Now \$16⁹⁵

SUITS—Single or double-breasted, in all wanted patterns, with two pairs of pants. Values up to \$45.00 \$24⁵⁰

SUITS—from America's foremost tailors, in all the new winter materials, with two pairs of pants. Values up to \$60.00. Now... \$29⁵⁰

OVERCOATS—A limited number of remarkable values in Overcoats. Closing out at \$13⁵⁰

OVERCOATS—Extra quality of men's fine double-breasted coats. Formerly sold at \$50.00. Now... \$24⁵⁰

OVERCOATS—Leather-lined, double-breasted, plaid back overcoats. Values up to \$40.00. Now \$19⁵⁰

CLOSING OUT All Our MEN'S O'Coats **The Fashion** 111, SOUTH 16th STREET ACROSS FROM HAYDEN'S **CLOSING OUT** All Our MEN'S Suits

Selling Out!

We Quit in Just a Few Days. Take Advantage of These Slaughter Prices

One Lot Men's Suits and Overcoats Sold Up to \$30 \$21.00	All \$40 Men's Suits and Overcoats Forced-to-Quit Price \$19.75	All \$50 Men's Suits and Overcoats Forced-to-Quit Price \$24.85	All \$60 Men's Suits and Overcoats Forced-to-Quit Price \$29.85
---	---	---	---

All-Wool French Flannel Shirts, values to \$8.50 \$2.95	Leather-Lined Vests, with full sleeves, at \$4.98	Men's Sweater Coats, good weight, while they last 98c
---	---	---

Regular 20c Hose, to go at, per pair 9c	35c Garters, while they last, per pair 14c	Fiber Silk Hose, all colors, per pair 44c	Arrow Soft Collars, 12c	Men's Slippers, \$2.50 values, at \$1.29	\$12 to \$15 All Wool Sweaters, extra heavy, at \$4.95	All Wool Caps, with earlaps, blue serges included, at 48c	Any Felt Hat in the house, to close out, at \$2.45	\$2.50 and \$4 Fine Dress Shirts, to close out, at \$1.49	Unionalls, our Quitting Business Price, only \$1.79	Ribbed Union Suits, go at 98c	Wool Ribbed Union Suits, all sizes, per suit, \$1.98	We were forced to accept large shipment of Dunlap Shoes and Overcoats; they must go regardless of cost.	Pure Silk Knit Neckwear, \$2.00 values, at 98c	Fine Cashmere Hose, pair, 48c
---	--	---	-------------------------------	--	--	---	--	---	---	-------------------------------------	--	---	--	-------------------------------------

Dunlap Shoes \$12 high grade Dunlap Shoes, to close out, at, per pair, \$6.00 \$15 finest Dunlap Shoes, to close out, at, per pair, \$7.50 \$10 high grade Dress Shoes, to close out, at, per pair, \$4.89

DAM CLOTHES SHOP 1312 Farnam Street. \$3.00 FLANNEL SHIRTS \$1.49 \$1.00 Neckwear 47c \$1.75 Neckwear, at 98c