

### EXCAVATING FOR PACKING PLANT NEARLY FINISHED

Material on Ground for Super-structure and Contracts Are to Be Awarded Next Week.

Two huge steam shovels that have been engaged for weeks past in the work of excavating the immense cellar space and foundations for the new Skinner packing plant on the South Side have about finished the job.

The first of next week the contracts for the platforms and super-structure will be awarded and the actual work of pouring the concrete will be started. The government has recognized the proposed new plant as an essential war industry and has given aid to the purchase and assembling of the thousands of tons of building materials which will enter the mammoth enterprise.

The company has already purchased and is assembling on the site 35,000 barrels of cement, 900 tons of steel rods for reinforcement, 36,000 tons of crushed rock and gravel and 4,000,000 brick.

#### Add Three Stories.

It was originally planned to erect a main building five stories in height, but the new specifications will call for an eight-story main structure.

First plans provided for a cold storage space of 2,000,000 cubic feet. The new plans will embrace the construction under the entire plant of an immense sub-basement with a storage capacity of 3,000,000 pounds of sweet pickled meats.

In order to speed up the work of construction separate contracts will be awarded for the big cellar and the unloading and shipping platforms.

#### Most Modern in America.

The new Skinner packing plant, when completed, will be the most modern plant in America in its arrangement. It will consolidate under one roof every department, each divided by firewalls and connected by a fireproof vestibule. The arrangement provides for economy of time in the handling of the products of each department and will bring operating costs to a minimum and efficiency to the maximum.

The company will have 500 men and women in its employ at the start and the comfort of these employees will be conserved with dressing rooms, lavatories, toilets, shower baths, club dining and rest rooms for each of the sexes. Each of the dressing rooms will be provided with lockers, lavatories, shower baths and will be steam heated.

The produce department of a packing house is a very important one. The Skinner Packing company is now operating its produce department in its own building at 1116-18 Douglas street, Omaha. The plant of the Skinner Packing company will be approximately three times as large as the present plant of the Skinner Manufacturing company.

## Brothers Who Sought to Fly as Team in Army Air Forces Are Parted When Nervous Shock Ends Career of One

By WALTER A. PETERS.

Plans formed months ago by two brothers, Charles and George Evans, 2552 Manderson street, to form an "air team" and fly in the same airplane with one as gunner and the other as pilot, have come to a sudden end. The application of George Evans for a first lieutenancy at Dorr field, Arcadia, Fla., has been rejected because of severe nervous shock and defective eyesight resulting from a case of pneumonia last summer at the School of Aeronautics at Austin, Tex. Twice by a matter of days he has missed securing a commission.

The two boys are sons of Prof. Paul W. Evans, formerly of Bellevue college, but now educational director and camp secretary of Fort Omaha for the Young Men's Christian association.

Members of the same foot ball and basket ball teams at the high school at Ohiowa, Neb., the two brothers played on the same foot ball teams at Bellevue college. When the United States entered the war in April, 1917, Charles Evans, then a junior at Bellevue, left college to join the machine gun company, "the suicide squad," of the old Fourth Nebraska. George Evans soon afterwards left his teaching position at Orleans, Neb., and enlisted in the same unit.

As soon as the brothers had formed the purpose of being together, George entered the school of aeronautics at Austin, Tex., and Charles entered the flying school at Selfridge field, Mount Clemens, Mich., to take a special course in aerial gunnery. He has recently been awarded his first lieutenancy and is now doing coast patrol work around Mineola and Babylon, L. I.

But George Evans contracted pneumonia at Austin 12 days before he was to receive his commission. Repeated telegrams to his parents in Omaha warned them to prepare for his death. Four days of antitoxin treatment saved his life, however, but left him in so nervous and shattered a condition that he was given leave of absence. After his return he was sent to Dorr field, Arcadia, Fla.

Despite his extreme nervousness and the defective sight in his left eye, he managed to keep his condition a secret from his commanding officers until two weeks ago, when repeated accidents to his plane in the air and on landing and several smash-ups caused a special examination to be ordered of his case. Confronted by a special examining board of the commanding officers at the field, he broke down and with tears confessed his real condition.

"If you continue to fly there is but one end for your career, and that is death," he was told. His officers have recommended him for a commission in the aircraft inspection service. His decision to resign and to enlist in the marines has been overcome by his parents' persuasion.

Meanwhile, although the two brothers



are not to fly together, Charles Evans is making progress as a flyer. A recent letter to his parents while he was still at Selfridge field before he was assigned to Long Island, tells of his flying over seven towns and making sketches of them.

"After two or three hours of this," he says, "one is rather tired, but it's great sport to get up about 7,000 feet and then side-slip or spiral for about 5,000 feet. Then you can surely get some sensation."

"We were 'shadow shooting' this morning, and even that is a great deal of fun. Two planes go over the lakes and one shoots the shadow of the other. It is a grand and glorious feeling to shoot and then to see the old shadow rush right into a burst of about 20 bullets."

"Another stunt we do here is to shoot at a large canvas bag towed by another plane. Thursday there were 16 planes all shooting at the same target. They use 'tracer' bullets for this. These have a compound which burns and which looks like a small star, so that the gunner can always tell just where his shots are going."

Professor Evans, father of the boys, resigned his position at Bellevue last

Above—Prof. Paul W. Evans, Bellevue college professor, who resigned to do Y. M. C. A. work; father of the two boys.

Below—Left—Lt. Charles R. Evans, who won his commission and is now flying.

Below—Right—George Evans, refused a commission because of illness contracted in training camp.

spring to enter Young Men's Christian association work at Fort Omaha. He has been education secretary only at the fort until recently, when the resignation of Camp Secretary Taylor gave Professor Evans the additional task of acting as Young Men's Christian association director at Fort Omaha, Fort Crook and Florence field. He is a brother of Mrs. Z. T. Lindsay, head of the Woman's bureau of the Nebraska Red Cross.

### CANADA TAX LAWS FAVOR LIGHT CARS

Automobiles Which Make Smallest Demands on Gasoline and Rubber Pay Smallest Taxes.

For some time many indications have pointed to the rapidly increasing popularity of the light-weight car. In view of present war conditions, but not until recent action by the Canadian government has the official stamp of approval ever been accorded light cars as a class.

In revising the motor laws to meet the new tax requirements, Canada

came to the conclusion that whatever increase was necessary should fall for the most part on those cars that made the maximum demands upon the natural resources, such as gasoline, rubber, roads and labor. Following this principle, officials found that such demands were in direct proportion to what a car weighed, or expressed in other words, directly proportional to the horsepower of the engine.

In devising a new formula for determining horsepower, factors were introduced that favor those cars whose weight does not require a large engine to move it. As an example of the way the new rating works out, the typical four-cylinder car must bear only a 12 per cent increase in tax, the light six a little over 20 per cent, while the big six may stand fully 33 1-3 per cent larger fee.

When asked as to the effect this change brought about upon the Franklin, Mr. Pelton, Franklin distributor in this territory, pointed out that the

horsepower rating in this case remained unchanged, and as a consequence the motor tax the Franklin owner in Canada is required to pay is no larger.

#### Manawa to Close Labor Day.

Manawa park announces that Labor day will see the closing of this, its best season. Thousands and thousands of people have been visitors at the park this year, enjoying the bathing, boating and picnic grounds and having hilarious evenings in the amusement section. The dancing pavilion has been well crowded all season and not an accident has occurred to mar the happiness of an occasion. The park management plans some extensive improvements for the coming season to open next spring and as a inducement is going to have a big time for everyone there today and tomorrow.

Omaha's Pioneer Eight Hour Store

# HAYDEN'S

THE CASH STORE

Will Close at 1 P. M. Monday

## LABOR DAY

Special Notice to the Public

Appreciating your demonstrated consideration of the people that work, your hearty response to all requests for food and fuel conservation induced by patriotic motives, your cheerful acceptance of the inconveniences of limited delivery of merchandise, etc., we announce

Beginning Tuesday, September 3rd

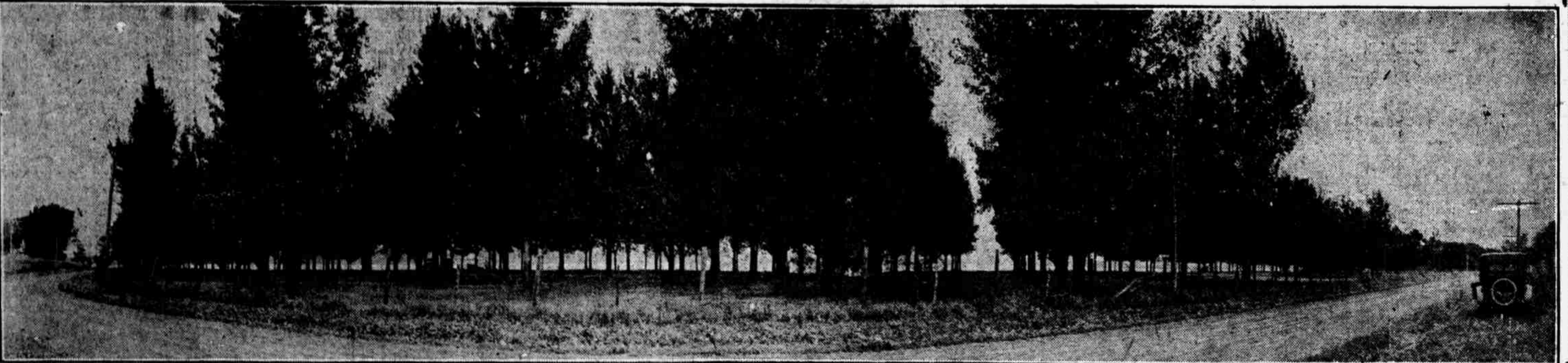
Continuing Our Eight Hour Day Plan

This Store Will Open at 9 A. M.  
Close at 6 P. M., Saturdays Included

Shop Early—Help Make the Short Hour Day a Success

It Pays—Try HAYDEN'S First

# LAKOMA



## BEAUTIFUL LAKE HOME LOTS

This Addition was planned 25 years ago, trees being set out at that time in even rows, land all seeded to fine bluegrass. Lake Manawa is the ideal spot for your summer home. This is the best and prettiest front on the lake. Good car service year round. There will never be another plat like it. Plat restricted. You should own one.

OFFICE ON THE GROUNDS ADJOINING SHADY GROVE

Take Lake Manawa car. Prices from \$250 to \$750. Lowest Terms. 10% Cash, balance monthly.

Sale Starts 10 A. M. Saturday, August 31st, and Will Continue Until All are Sold

FIRST COME FIRST SERVED

FIRST COME FIRST SERVED

# WALLACE BENJAMIN AND COMPANY

Realtors

Lake Manawa and No. 19 North Main St., Council Bluffs, Iowa. Phone 295