

**WIFE STRANGER WHEN THEY WED, FARMER ADMITS**

George Curfman Files Saly Allegations in Reply to Divorce Suit Started by Mrs. Curfman.

George Curfman, 62 years old, reputedly wealthy farmer of Garden county, Nebraska, Monday morning in district court filed his answer to a suit for separate maintenance brought by his wife, Mary Curfman, on May 7. In his answer, Mr. Curfman sets forth a series of alleged "molesters" that bears a resemblance to the days of Robin Hood.

Mr. Curfman, in his answer, alleged that on October 25, 1917, while in Omaha on business, he was approached on the street in front of a local department store by the then unknown woman, who became so familiar as to ask him to join her at her room in a hotel. He refused at the time, the petition alleges, but on a later visit to Omaha, called at the hotel, where he alleges he remained with Mary as man and wife for several days.

On January 23, Mr. Curfman alleged in his answer, Mary and he were married in St. Joseph, Mo., and returned to Omaha.

**Wife Suggested Divorce.**

Shortly afterwards, Mr. Curfman alleged that his wife suggested a divorce, a proposition which he would not listen to. In the events that followed, Mr. Curfman alleges that he placed a note for \$10,000 in the hands of his wife's attorney to act as a promised settlement. Later, Mr. Curfman alleges, his wife followed this transaction by a request for \$5,000 as a further settlement, and she then wanted possession of a 640-acre farm, which he alleges he turned over to her. Mr. Curfman alleges he paid his wife various other sums during the interim.

In Mr. Curfman's answer he asks the deed to the property to his wife be set aside and that his promissory notes be nullified.

**BARADA TORNADO INJURES THREE; TRAINS DELAYED**

Stella, Neb., May 27.—(Special Telegram).—A small cyclone wrought havoc to more than a half dozen farms at Barada, along the Missouri river, 12 miles east of Stella, last night. Mr. and Mrs. Charles Kuker, aged people, are not expected to live and Mrs. Erskine was very badly injured. Mrs. Cliff Ham, mother of a baby 2 days old, walked a half mile to shelter through mud and water.

The storm resembled a water spout and was the worst in this locality since 1883. At Stella, nearly five inches of rain fell. Hundreds of acres of corn was washed out or covered up and Muddy river is overflowing. The bottom railroad tracks are washed out and no mail train has been here for more than 24 hours.

Nebraska, Iowa and the two Dakotas were drenched Sunday night and early Monday by rains that varied from a cloudburst, spilling 5.75 inches of water at Nebraska City, to .07 of an inch at Culbertson, with cyclonic winds south of Beatrice, severe electrical and hail storms in Douglas county, sleet between Beaver City and Oxford, and snow in the extreme northwest part of the state. Railroad traffic in localities was interfered with and in some cases tied up.

The cloudburst at Nebraska City and vicinity caused Camp creek to bury one and a half miles of track, on the Holdrege division of the Burlington, between Nebraska City and Peru, with water, mud and drift to depths ranging from one to six feet, and annulling all traffic on that line.

**Crops Are Destroyed.** In the extreme southeastern part of the state, in a territory extending from Beatrice and Fairbury to the Missouri river, the abnormal precipitation in a short space of time washed out fields of corn, doing immense damage, and necessitating the replanting of thousands of acres. The soil of a larger part of the state is thoroughly drenched and the subsoil saturated with water. Farmers say that crops will be enabled to draw from his reservoir to the extent all will be guaranteed for the balance of the season.

Eastern Nebraska was storm-swept at the same time. Conditions in and about Omaha have now returned normal. Weather predictions are for continued showers.

**Dan Stephens Tells of Visit To Trenches of War Zone**

Congressman Dan Stephens delivered an address Monday night at the auditorium of the Young Women's Christian association rooms following a banquet given by the board of directors in commemoration of the silver anniversary of the organization. Rev. T. J. Mackay pronounced the invocation and Mrs. Fred J. Clark rendered a vocal selection. Addresses were delivered by Mrs. W. P. Harford, former president of the association, and Miss Pickering, general secretary.

Mr. Stephens told of his visit to the front line trenches of the European war front.

**Wife Draws Pair Black Eyes, Husband is Given 120 Days**

A. B. Ferguson, 209 Francis street, appeared in police court Monday with two charges against him—unlawful possession of liquor and assault and battery. Mrs. Ferguson's black eyes and bruised face bore mute testimony to the latter charge. Ferguson pleaded guilty and was given 90 days in the jail for the assault and 30 for the illegal possession of liquor.

**Egg Dealers to Work Out Plan for Handling Product**

Egg dealers of Nebraska will meet Tuesday afternoon with the state food administration to work out a plan for the handling of eggs in Nebraska. Representatives of the Egg Dealers' association, packers and shippers of eggs will be present. Otto Murchel, state pure food commissioner, will also be here.

**OMAHA TRAFFIC MEN ORDERED TO INCREASE RATES**

New Passenger Ticket Schedule Boosts Fare to San Francisco More Than \$10; an Example of Regulation.

Railroad officials in Omaha Monday were advised by Director McAdoo that, June 10, passenger rates will be advanced to 3 cents per mile. This will apply on all railroads and to intrastate as well as to interstate business.

If travelers have laid in a stock of tickets in anticipation of an advance in rates, these tickets will be void unless the holders pay the difference between the original cost and the 3 cents per mile, the rate that after June 10 will be standard.

After June 10 there will be no advantage to be gained in buying round trip tickets, for Mr. McAdoo holds that the rate will be on the one basis and that no one class of transportation will have the edge on another.

**Examples Under Increase.**

As an illustration of what the advance in rates means to the traveler: At the present time the coach rate from Omaha to San Francisco is \$54, including the war tax. The tourist sleeper is \$6.33, making a total of \$60.33 for the one-way trip. Under the new schedule, fare will be \$64.48, with the tourist remaining at \$6.33, making the total, \$70.81.

Under the old schedule the traveler going to San Francisco, if he occupied a lower berth in a standard sleeper, paid \$66.10. Under the new schedule the same accommodations will cost him, \$79.88.

From Omaha to Kansas City, under the old schedule the railroad fare is \$5.18, but under the new it will be \$7.56, with \$2.20 additional if the ticket holder occupies a sleeper.

**Five Dollars More to Chicago.**

To Chicago the rail fare is \$13.01 at the present time. Under the new order of things it will be \$18.40 and \$2.75 additional if a sleeper is occupied.

Omaha to Minneapolis the old rate is \$9.15, but under the schedule effective June 10 it will be \$13.78.

The Omaha-New York one-way fare is \$35.80. The new rate, as figured out by the railroad men, will be \$51.59, with \$8.25 added for a lower berth on a sleeper.

Unused tickets, brought prior to June 10, will be redeemed at the price paid for them, and on round trip tickets, when one end has been used, the return portion will be honored if the holder is enroute to destination on June 10.

**Commutation Fares Advanced.**

Second class immigrant, convention, excursion and tourist rates are discontinued and stopovers on one-way tickets in order to permit of the holders making side trips are abolished. Optional routes are things of the past unless they are specified in the tariffs.

Commutation fares everywhere are advanced 10 per cent. An additional charge of 19.23 per cent of the normal one-way fare is made for the privilege of riding in standard and 8 1-3 per cent for tourist sleepers.

Under the new schedule all officers of the army and navy and all enlisted men and nurses, when traveling in uniform, whether on furlough or official business, will be carried at one-third the regular fare. This rule will be applied on all trains and in sleepers and day coaches.

**Leg Sore**

A huge sore—very deep—full of foul discharge. Agony all day; no rest at night. Then just a few drops of the gentle, cooling liquid, D. D. D. Irritation and pain gone. Sweet, refreshing sleep at night. In due time, complete healing. We guarantee D. D. D. 50c and \$1.00. Ask for D. D. D. today.

**D. D. D. The Liquid Wash**

Sherman & McConnell Drug Co.

**BELL-ANS Absolutely Removes Indigestion. Druggists refund money if it fails. 25c**

**STRONG DRINK ROBS A MAN OF ENERGY**

Cadomene Tablets Afford Relief to the Shattered Nerves of the Drinker.

Many men, soldiers and sailors, have stated that when they were denied their liquor, their nerves became shattered, until the wonderful tonic effects of Cadomene Tablets restored them to normal health. The man who swears off liquor or tobacco will find his task easier, and will regain his normal poise and control quicker by taking Cadomene Tablets. The wornout man or woman, the nervous and sleepless, find a boon in Cadomene Tablets, which are guaranteed safe, harmless and effective always, or money back. Get a tube today from your druggist and help yourself to get right—right away.—Advertisement.

**OLD AGE A CRIME!**

Some people are young at 60—old checked, sturdy and vigorous. Others are old at 40—joints beginning to stiffen up a bit; step beginning to lag and lose its springiness; occasional twinges of pain in the back, feel tired without cause, and possibly a twinge of rheumatic pain. In most cases these are the danger signals to warn you that the kidneys are not promptly doing their work of throwing off the poisons that are always lurking in the body. To neglect these natural warnings is a crime against yourself. If you have these symptoms you can find prompt relief in GOLD MEDAL Haarlem Oil Capsules. For more than 200 years this has been the recognized remedy for kidney and bladder ailments. GOLD MEDAL Haarlem Oil Capsules are imported direct from the laboratories at Haarlem, Holland. Get them at your druggist. Do not take a substitute. In boxes, three sizes—Adult.

**Decoration Day Needs Are Here**



**Boys' Wash Suits For Decoration Day Wear**

We are showing a complete stock of the smartest styles with CUFF BOTTOM PANTS. Fabrics and tailoring are equal to suits selling regularly at \$5.00. Special at \$3.50.

A varied assortment of colors and patterns. Plain colors and fancy stripes. Contrasting tones on collars and cuffs and sleeves. Very unusual models. Short or long sleeves.

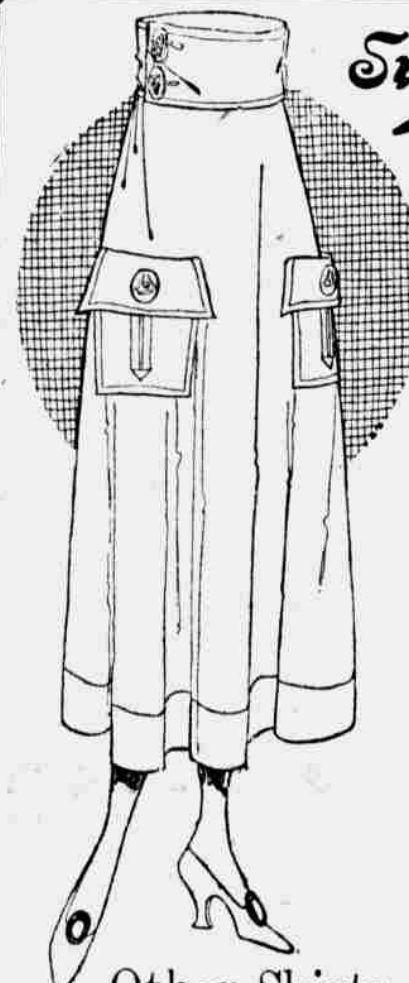
One particular fabric used in the making of these Suits is the justly celebrated RENFREW DEVONSHIRE CLOTH, the best cloth for kiddies' wash togs that we know of. COLORS WOVEN IN, not printed. Sizes 2 to 8 years.

**Boys' Wash Suits, Two Lots**  
Suits that were \$2.00 to \$2.50, now . . . . . \$1.39  
Suits that were \$3.00 to \$3.50, now . . . . . \$2.00

Most pleasing assortment at either price. Sample Suits and small lots and others slightly soiled from previous sales; every one remarkable value. Sizes 2 to 8 years.  
Second Floor, Men's Bldg.

**Parasols for Decoration Day**

We carry a complete line of parasols, showing the very latest styles and colors.  
Ladies' Parasols from . . . . . \$1.00 to \$20.00  
Children's Parasols, from . . . . . 25c to \$1.98  
Main Floor



**Shrink None Wash Skirts For Decoration Day**

We are offering the most complete stock of these splendid Wash Skirts, in a wonderful variety of styles. We mention just three of them as examples of what you may find.

A VERY HANDSOME WHITE WASH SKIRT made of fine quality "NON-SHRINKABLE" Gabardine, well tailored, with deep tailored self-banded side pockets, trimmed with pearl buttons, wide belt, neatly tucked with shield front buttoned over with white pearl buttons, giving an unusual novel effect, at . . . . . \$4.95

FINE TAILORED WHITE WASH SKIRT made of "NON-SHRINKABLE" Gabardine, exactly as illustrated, with two large fancy pockets trimmed with large carved pearl buttons, wide belt trimmed with four large pearl buttons; a very neat design, all sizes, at . . . . . \$5.95

WELL TAILORED WHITE WASH SKIRT made of good quality "NON-SHRINKABLE" Gabardine, novel tailored pockets, trimmed with white pearl buttons, wide belt, also trimmed with pearl buttons; all sizes, special at . . . . . \$3.95

**Other Skirts for Misses and Small Women Smartest Styles Shown on Fifth Avenue**

The new features are braided and embroidered belts, panels on skirt and new sash effects. Fashioned oforgette Crepe, some are tucked with graduated necking all around. For sport and dress wear. Others of Gabardine,orgette and Satin.  
Prices are \$6.95 to \$29.00  
Second Floor



**Outing Shoes**

For Ladies and Children

Ladies' and Children's White Sea Island and Canvas Pumps, Shoes and Oxfords; high and low heels; in all the new and wanted shapes and styles.

Ladies' Sea Island Linen Oxfords in military covered heels, white leather elk soles; at a pair . . . . . \$7.00  
White Canvas Boots in military leather heels; especially priced, at a pair . . . . . \$3.50, \$4.00 and \$4.95  
Children's, Misses' and Growing Girls' Shoes in white canvas, high cut, lace style; at a pair, . . . . . \$1.75, \$2.75 and \$3.00  
Main Floor, Rear

**ANNETTE KELLERMANN BATHING APPAREL**



REG. U.S. PAT. OFF.  
LOOK FOR THE NAME ON THE LABEL

Everyone knows the wonderful swimming ability of Annette Kellermann, and a suit named after her must surely possess merit beyond ordinary.

Knitted Jersey Bathing Suits, trunks attached, white trimming at neck, sleeves and hem; colors are: Royal, Emerald, Black \$3.98 and Cardinal; special at . . . . .  
Second Floor.

Buy War Savings Stamps Whenever You Can



**Flags**

For Decoration Day  
Flags on sticks, with gilt spear, 12x18 inches, 10c each.

3x6 Feet Fast Color Flag, on hard wood pole with brass ball at \$1.00

Pure Silk Flags on black sticks with gilt spear—  
4x5 inches . . . . . 5c each  
6x9 inches . . . . . 10c each  
9x14 inches . . . . . 25c each  
12x18 inches, at 50c

**FLAGS**

For Poles or Porches  
3x5 feet, fast color .75c  
3x5, sewed stripes \$1.00  
4x6, sewed stripes \$1.50  
6x10, sewed str., \$2.98

Large Defiance Bunting Water-Proof and Fast Color Flags from \$5.00 to \$20.00.  
Main Floor

**Dainty White Dresses**

For Growing Girls For Decoration Day Wear

A splendid assortment of white Dresses, trimmed with dainty laces and embroideries, tiny tucks; sizes for girls from 6 to 14 years; specially priced at only . . . . . \$2.00



**Girls' Middy Skirts**

We offer a large assortment of Girls' Middy Skirts, made of good quality drill cloth, gabardine, repp, etc.; suitable for camping, picnics, golf, tennis and all outdoor sports, in sizes from 6 to 14 years; which we offer at the exceptionally low prices of from . . . . . \$1.25 to \$3.50

**Wash Skirts for the Flapper**

We offer a complete assortment of Wash Skirts for the flapper, 12, 14 and 16 years; smart styles; trimmed with pearl buttons, fancy pockets, wide and narrow belts; made of Honeycomb Cloth, Gabardine, Sport Stripes and Plaids, at . . . . . \$2.50 to \$5.00  
Second Floor



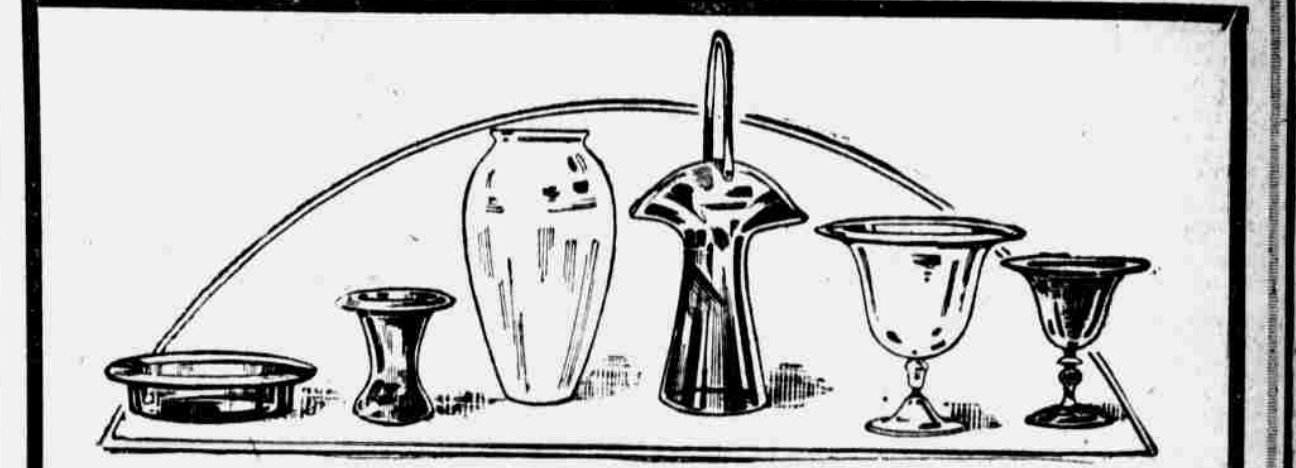
**Buy These Mid-Summer Blouses New Middy Blouses and Smocks For Decoration Day Wear**

We have just received from New York these excellent styles, which we can sell at very moderate prices. As a matter of fact, you will go a long way in any part of this country to find styles to duplicate these at the prices we quote.

- DAINTY LINGERIE BLOUSES, lace and embroidery trimmed models, special at . . . \$1.00
- SEMI-TAILORED or DRESSY VOILE, Dimity and Organdie Blouses. Very special, at . . . \$2.00
- CREPE DE CHINE and LINGERIE BLOUSES, all new colors, white and flesh \$2.95
- GEORGETTE CREPE, CREPE DE CHINE, ORGANDY AND VOILE BLOUSES, special at \$3.95

**New Middy Blouses and Smocks**

Dozens of styles to select from—made of Galatea, Linen, Linene, Pongee, Voile and Crepe, \$1 to \$12.95  
Second Floor



**500 Pieces Fancy Glassware 98c Excess Stock of a Big Jobber**

No need of our stating value on these, because if we put down the real worth of these pieces you would not believe it—better come and see them for yourself. We do want to make this statement however, that this is the best offering of this kind of Glass that we have ever made—or that we have ever heard of—you can take our word for it that you are going to miss a big thing if you miss this sale.

Baskets, Comports, Vases, Center Pieces, Flower Bowls, Fruit Bowls, Low Comports, Salad Bowls and Lily Bowls  
THE ILLUSTRATION SHOWS SOME OF THE PIECES.

THE COLORS are wonderful, every harmonizing tone you can think of; some dainty, some gorgeous—Mother of Pearl, Topaz, Amethyst, Green, Blue and the dainty Tiffany effects.

THE SHAPES—The sketch shows a few, but there are hundreds of others—some are massive, others are slender and dainty—all are so wondrously fascinating that you will wonder and wonder how we can sell them at 98c.  
Main Floor

**Brandeis Stores**

Complete Stocks of all Decoration Day Needful