

BURGESS-NASH—OMAHA—MAIL SERVICE

**Order by Mail,
October 22 to 27**

THIS PAGE of unusual values in merchandise of the most seasonable and wanted sort is compiled especially for your benefit—for you who find it inconvenient to come to our store to benefit by the splendid saving possibilities.

The offerings on this page are for this week only, October 22 to 27 inclusive, and orders post marked after 9 p. m. Saturday will not be accepted for filling.

**We Guarantee
Prompt Delivery**

Sending Money
Remittances may be made by Postoffice money order, Express money order or Bank Draft. If currency is sent the letter should be registered. 1¢ and 2¢ stamps are accepted for small amounts.

Liberal Guarantee
If you are not perfectly satisfied in every way with your purchase, return it and we will refund your money—no offer could be fairer or broader.

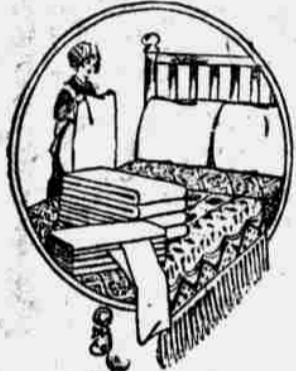


**WE PREPAY DELIVERY CHARGES
ON EVERYTHING YOU BUY BY MAIL**

Insured Mail
You take no risk in buying by mail from us because we insure all packages sent by Parcel Post. Furthermore, if the purchase should not prove entirely satisfactory when you receive it, return it and we will refund your money.

Child's Mittens, 45c
Warm, fleece lined mittens, with leather palm and astrakhan back, brown and tan; very special this week, at 45c pair.

**Crochet Bed Spreads Offered
This Week at
\$1.50**



No. 125—Crochet bed spreads, hemmed, full bleached, regular double size, assorted patterns—**at \$1.50.**
No. 325—Hemmed satin bed spreads, assorted Marseilles patterns, large double bed size—**at \$3.25.**
No. 150—Crochet bed spreads, snow white, full double bed size, scalloped with cut-out corner, special sale, **at \$2.25.**
No. 350—Fine satin Marseilles bed spreads, large size, handsome assorted designs, scalloped with cut-out corners, **at \$4.25.**

**These Are the Season's
Biggest and Best Coat Values**

THE material alone would in a regular way cost more than the price asked this week. Send your order today.



Women's Plush Coats at \$15.95

No. 7320—Made of good quality plush, with Saltz lining, fitted style and $\frac{7}{8}$ length. Black only. We consider them by long odds the season's best when at **\$15.95.**

Women's Cloth Coats at \$12.50

No. 7321—Fancy mixtures, Scotch tweeds, desirable for automobile and general wear, loose fitting with belt, large collar, very special for this week at **\$12.50.**

**Women's All Wool
Serge Skirts at**

\$4.95



No. 7455—Made of all-wool serge, with gathered back, wide belt stitched with silk tailored braid, two pockets also stitched with braid and trimmed with buttons. Navy or black, special this week, at **\$4.95.**

**Women's Union
Suits
75c**

No. 10-U.S.—Women's Union Suits of white cotton fleece lined, high neck, long sleeves; low neck and no sleeves; also Dutch neck, elbow sleeves and ankle length—**Sizes 34 to 38, at 75c**
Sizes 40 to 44, at \$1.00

**Here's a Big
Corset Bargain at
\$1.25**

No. 176-BN—Strong, medium bust corsets with long skirts, free hip, double boned—made of firm coutil, wide embroidery trimmed, strong supporters, sizes 19 to 36, very special, at **\$1.25.**
Brassieres, 25c
SPECIAL—Brassieres, embroidery and lace trimmed, both back and front; sizes 34 to 46, special, **25c**

**More Magazines for Less Money
If You Act This Week**
Seven Great Bargain Offers

COSMOPOLITAN MAGAZINE..... 2 Years for \$2.00	GOOD HOUSEKEEPING..... 2 Years for \$2.00	HEARST'S MAGAZINE..... 2 Years for \$2.00
Youth's Companion, New subscribers may have 52 issues of 1918, all remaining 1917 weekly issues. The Companion Calendar for 1918.	Boys' Life..... \$1.50	McClure's Magazine..... \$1.50
McCall's Magazine (12 Fashion Numbers)	Ladies' World..... 1.00	Ladies' World..... 1.00
American Magazine..... \$1.50	McClure's Magazine..... \$1.50	Ladies' World..... 1.00
Woman's Home Companion..... 1.50	Ladies' World..... 1.00	Ladies' World..... 1.00
To one address	You Save 50 Cents	You Save 50 Cents
Publisher's Price, \$3.00	Publisher's Price, \$4.00	Publisher's Price, \$2.50

**Girls' Winter Coats for
Ages 6 to 14 Years
\$5.95**



No. 7250—Mothers will appreciate this offering when they see the coats, made of all wool melton cloth, in brown or navy blue, lined throughout, finished with belt and pockets; all sizes for girls 6 to 14 years. Very special for this week at the price, **\$5.95.**

**Wool Dress Goods At
98c**

No. 002-M—Wool dress goods in plaids and checks, for dresses and skirts, embracing all the new color combinations, in the stylish dark tones, 44 inches wide—**98c yard.**
French Serges, \$1.75
No. 002-1—All wool French serges, for one-piece dresses, navy blue only, 42 inches wide, **\$1.75 a yard.**
Velour Coatings, \$3.50
No. 002-2—Velour coatings, heavy quality, navy, brown, dark green, leather, burgundy, plum, Copenhagen and black; 54 inches wide—**at \$3.50 yard.**

**Linen for
Embroidering**

IT'S the right time to start your embroidering work for Christmas gift giving, and, of course, you'll want pure linen of a good quality. The following prices are quoted on full bleached linens:
No. 74-N—18 inches wide... 50c
20 inches wide... 55c
22 inches wide... 60c
24 inches wide... 65c
27 inches wide... 75c
36 inches wide... \$1.00
45 inches wide... \$1.25
54 inches wide... \$1.50
No. D-62—Eru linen, in smooth, good heavy weight.
18-inch... 50c 27-inch... 75c
20-inch... 55c 36-inch... \$1.00
22-inch... 60c 45-inch... \$1.25
54-inch... \$1.50

**SILK POPLIN
98c**

No. 001-1—Especially desirable for smart dresses, in pretty shades of navy, burgundy, green, gray, brown, plum, white, wisteria, Belgian blue, red and black; at 98c a yard.
Dress Satin \$1.49
No. 001-2—Satin are the correct fabrics, shades of brown, gray, reseda green, navy blue, old rose, dark green, tan, Alice blue, Belgian blue, plum, wine, white or black, 36 inches wide, **\$1.49 a yard.**
Crepe de Chine \$1.59
No. 001-3—All pure silk, black crepe de chine for rich, dressy gowns and waists, 40 inches wide, **\$1.59 a yard.**

**This Marabou Cape
\$2.95**

No. 17-X—Fluffy marabou capes, ostrich and marabou combined, natural shades, and black. Can be worn with any color. Silk lined and finished with ribbon ends. An extreme special this week **\$2.95.**

**Women's
Cotton Hose
25c**

No. 10-W.H.—Here's a most remarkable offering of women's hose, bought especially with the requirements of our out-of-town patrons in mind. Heavy black cotton, seamless foot, double garter tops. We consider them extreme value this week, at **25c pair.**

**Men's Automobile Gloves,
Very Special This Week at
\$2.85**

No. 1266—Men's auto gloves with gauntlet black leather faced. Balance of glove including gauntlet of heavy gray wool cloth. A very desirable and durable auto glove, at **\$2.85 a pair.**
No. 1267—Same style as above, except khaki color, price, **\$2.85 a pair.**
No. 1268—Same as 1267, except wool lined. Price, **\$2.85 a pair.**

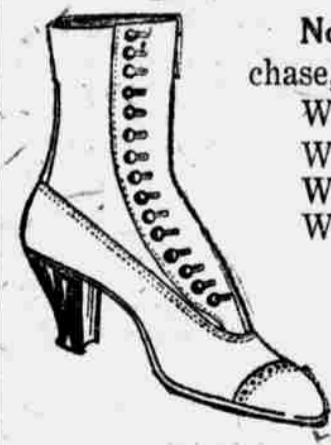
Everybody Is Knitting

No. 114—Hollywood knitting needles with sterling ends. Sizes 5 and 7 for Red Cross work, **35c pair.**
No. 115—Steel knitting needles, all sizes, **5c each.**
No. 814—14-inch amber knitting needles, sizes 4-5, 7-9, at **50c a pair.**
No. 710—10-inch knitting needles, all sizes, **35c pair.**
Khaki knitting yarn, at **\$1.00 a hank.**
Fleisher's knitting worsted, black, white, all shades and red, navy, green, brown, pink and blue, **50c a ball.**



**EXTRA SPECIAL!
Women's Shoes at Less than Factory Price
for This Week
\$3.95**

No. 23-X.—They're the result of a big special purchase, including:
Women's patent colt, button, cloth tip.
Women's patent colt, button, kid tip.
Women's patent colt, lace, kid toe.
Women's dull kid, button, plain toe.
Women's dull kid, button, with tip.
Women's kid lace, plain toe, short vamp.
Note—Be sure to state size and give foot measurements, as shown elsewhere on this page.



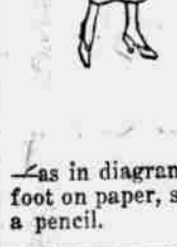
How to Order Garments

When ordering suits, coats, dresses or cloth skirts, write down the order number, size, color, description and prices, and, in addition, mention the following measurements:
A—Bust Measure Pass the tape measure entirely around the bust over the fullest part in front and well up on the shoulder blade in back.
B—Waist Measure Measure entirely around small-est part of the waist over your shirt.
C—Front of Skirt Measure from lower side of waistband down to foot of skirt.

SPECIAL NOTICE—All garments in this sale being of standard measurements, it will not be possible to fill orders on measurements out of regular proportions.

To Order Shoes

It is necessary to state both size and width—or else give us measurements of the foot, taking the inch measurements at ankle, heel, instep and ball of foot as in diagram, or an outline of the stockinged foot on paper, secured by drawing around it with a pencil.



BURGESS-NASH COMPANY.
"EVERYBODY'S STORE"
OMAHA NEBRASKA