

REMARKABLE CASE of Mrs. HAM

Declares Lydia E. Pinkham's Vegetable Compound Saved Her Life and Sanity.

Shamrock, Mo.—"I feel it my duty to tell the public the condition of my health before using your medicine. I had falling, inflammation, and congestion, female weakness, pains in both sides, backaches and bearing down pains, was short of memory, nervous, impatient, passed sleepless nights, and had neither strength nor energy. There was always a fear and dread in my mind, I had cold, nervous, weak spells, hot flashes over my body. I had a place in my right side that was so sore that I could hardly bear the weight of my clothes. I tried medicines and doctors, but they did me little good, and I never expected to get out again. I got Lydia E. Pinkham's Vegetable Compound and Blood Purifier, and I certainly would have been in grave or in an asylum if your medicines had not saved me. But now I can work all day, sleep well at night, eat anything I want, have no hot flashes or weak, nervous spells. All pains, aches, fears and dreads are gone, my house, children and husband are no longer neglected, as I am almost entirely free of the had symptoms I had before taking your remedies, and all in pleasure and happiness in my home."

Mrs. JORIE HAM, R. F. D. 1, Box 22, Shamrock, Missouri. If you want special advice write Lydia E. Pinkham Medicine Co., (confidential) Lynn, Mass.

DIAMONDS WATCHES ON CREDIT

Special sale of splendid genuine Diamonds, fine Watches, Jewelry, Silverware, for wedding and graduation presents.



Are you wondering how to meet the expense of a handsome wedding or graduation gift? Or perhaps you are thinking of the diamond engagement ring? We have your solution. Our special display of choice medium-priced pieces—there are sure to please. All you have to do is to send a check or money order with us. The small monthly payments will never be missed.

17-Jewel \$12.75 Elgin A Month. Men's Elgin, Waltham or Hamilton 14 or 15 J. & S. B. watch, in 2 1/2 year guaranteed double case, gold filled case, adjustment to temperature, iso-chronism, and positions.

Call or write for Catalog No. 100. Please enclose 10c for mailing will call.

LOFTIS THE NATIONAL CREDIT JEWELERS

BROS & CO. 1123 1/2 N. 16th St. Omaha.

HOTEL LENOX

LUXURY ECONOMY. One block from Copley Sq. and Public Library. Convenient to Shopping and Theatre District. All Outside Rooms. Excellent Cuisine.

Safe and Sure should be your relief from indigestion, biliousness, or constipation. Known to be reliable and famous for their prompt and certain efficacy—are

Beecham's Pills

Learned Sale of Any Medicine in the World. Sold everywhere. In boxes, 10c, 25c.

NEW YORK STOCK MARKET

Misgivings Called Up Day Before on Exchange Largely Dispelled.

GAINS IN THE WHOLE LIST

NEW YORK, June 10.—Such misgivings as Wall street conjured up yesterday in connection with the retirement of Mr. Bryan were largely dispelled today. The stock market opened with a firm undertone, the movement soon rising to one of all-around strength. Trading proceeded at a leisurely pace in the early session, later becoming animated. There was a feeling that the Washington note to Berlin would go far towards clearing up the political atmosphere.

Gains embraced all parts of the list, but copper and affiliated shares were the chief feature, a logical result of the remarkable trade conditions. Copper sold as high as 29 1/2 today, its best price in about thirty years. This was due to the extensive interest in the manufacture of war munitions, was quoted at 6 1/2 to 7, the high-water mark for this metal for almost a century. The market for the metal was also active, one of the large copper producing companies today declared an extra dividend of 3 per cent against the previous similar disbursement of 1 per cent.

War specialties again occupied a position of prominence, with gains of 2 to 5 points. General Electric scoring the maximum rise. Bethlehem Steel failed to make a new high record, but the previous stock market high, the highest quotation in its history.

United States Steel was the most active stock and gained 1 1/2 points. The corporation's May statement showing an increase of over 100,000 tons, and a decrease of almost as much in the preceding month, confirmed recent reports of trade betterment. Motor stocks gained 3 to 4 points and Pacific Mail's relations with Southern Pacific and the advantageous sale of its properties, the market closed at or near last prices of the day.

Total sales amounted to 42,000 shares. Another large installment of gold was received from Canada, making a total of \$20,000,000 received from that source on the current movement. The Bank of England increased its gold holdings by about \$2,700,000 during the week and strengthened its reserve liabilities by a small margin.

Bonds were firm, but without special features. U. S. 4 1/2 per cent, par value, aggregated \$1,000,000. U. S. 4 1/2 per cent, par value, unchanged on call.

New York Money Market.

NEW YORK, June 10.—MERCANTILE PAPER—360 day, 6 1/2 per cent. 60 day, 6 1/2 per cent. 30 day, 6 1/2 per cent. SILVER—Bar, 69 1/2; Mexican dollars, 88 1/2.

BONDS—Government, steady; railroad, firm.

TIME LOANS—Easy; sixty days, 7 1/2 per cent; ninety days, 7 1/2 per cent; three months, 8 per cent; six months, 8 1/2 per cent. CALL MONEY—Steady; high, 2 per cent; low, 1 1/2 per cent; ruling rate, 1 1/2 per cent; last 1/2 per cent; closing bid, 1 1/2 per cent; offered at 2 per cent.

Closing quotations on bonds today were as follows:

Table with columns for bond names and prices. Includes U. S. 4 1/2 per cent, U. S. 4 per cent, U. S. 3 per cent, etc.

Local Stocks and Bonds.

Table with columns for local stock and bond names and prices. Includes Omaha National Bank, Omaha Electric, etc.

CITY DADS BUSY OVER THE MERGER

Budget Situation is All-Absorbing Topic Since Governor Issues Proclamation.

SOUTH OMAHA DEAL INVOLVED

News that the governor's Greater Omaha proclamation was mailed to the city clerk had the effect of stirring the city commissioners to increased interest regarding the consolidated budget situation.

Superintendent Butler of the department of public accounts and finances conferred with City Attorney Rine on the subject of the forthcoming levy. While the city officials have a general idea as to the operations of the merger law, there are some details not yet definitely decided.

On the face of things, it appears that South Omaha will escape taxation for the last five months of this year, as the levy which South Omaha would have made next month and which would have been available to the extent of 90 per cent on August 1 will not be made under the consolidation.

Within the next few days the regular Omaha levy to cover the 1915 budget will be certified to in the regular way. The merger law provides that this certification may include amounts equal to the existing maximum levies allowed in South Omaha and Dundee. Under a recent legislative enactment Omaha may levy up to \$1,200,000 for general purposes, these increases being made over the last allowances: Police, \$200,000; parks, \$300,000; library, \$200,000; fire, \$200,000; sinking fund, \$50,000. It is probable that the full maximum will be made for the Omaha levy. At the same time, the commissioners may certify additional levies to cover South Omaha and Dundee to the extent of \$317,000 for the former city and \$115,125 for Dundee.

May Issue Warrants.

It is the present opinion of the superintendent of the finance department and the city attorney that warrants which may be issued to cover South Omaha expenses for the last five months of this year may be provided for when the levy is fixed a year hence, although there was an expression that it may be possible to make this provision in the forthcoming levy.

Commissioner Butler favors the idea of the city council convening soon as a budget board for the purpose of going over these important matters.

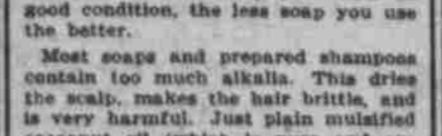
The superintendent of the police department must face a situation wherein salaries of all policemen are increased beginning July 1, with no additional funds for this year to meet the rate. Mr. Kugel believes it may be possible to overcome this situation in a way by declaring an "emergency," by reason of the increased force in the annexed territory, and in that manner divert some money from the miscellaneous fund to the police fund.

London Stock Market.

LONDON, June 10.—American securities opened steady today, but eased off later on the uncertainty of the political situation.

TINY RED PIMPLES ON DAY OLD CHILD

Got Larger. Hair All Came Out. Cried Terribly. Could Not Sleep. Had to Walk Floor to Quiet Him. Used Cuticura and Now Well.



Le Cross, Kansas.—"When my son was one day old he began breaking out on his face in tiny red pimples that seemed to itch, as he was uneasy and couldn't sleep. The pimples got larger and changed to water blisters. They would break and run and cause new ones to break out and when he was covered all over with a thick crust. His head was so bad we were afraid to wash it almost. All his hair came out. We kept him on a pillow for fear of breaking the blisters. Every time they broke they seemed to smart and burn, as he would cry terribly. The eruption disappeared the day we had to walk the floor with him to quiet him.

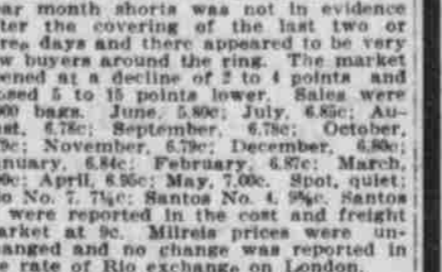
COCOANUT OIL MAKES A SPLENDID SHAMPOO

If you want to keep your hair in good condition, the less soap you use the better. Most soaps and prepared shampoos contain too much alkali. This dries the scalp, makes the hair brittle, and is very harmful. Just plain purified coconut oil (which is pure and entirely greaseless), is much better than soap or anything else you can use for shampooing, as this can't possibly injure the hair.

MANY CASES OF SCARLET FEVER AT CITY HOSPITAL

The health department reports that forty-four scarlet fever patients are being cared for at the city emergency hospital on Douglas street. There are fifty-seven houses under scarlet fever quarantine.

MR. FORD OWNER



SEND FOR OUR BARGAIN SHEET. It's Free and Will Save Money for Any Ford Owner.

We Sell Direct, No Long Profits Added at Your Expense. Ford Supplies Exclusively. Auto Accessory Co. 2063 Farnam, Omaha, Neb. Formerly The Ford Supply Co.

Money-Saving Specials

Furnishing Goods Dept. Men's Summer Shirts—To \$2.00 values, in percales, penangs, madras, French satinettes, etc., most desirable styles and colors. 69c

25c and 35c Wash Ties—100 dozen of them, silks and mercerized fabrics, in all colors.

Men's Union Suits—\$1.50 to \$3 values. 98c and 19c

Outing and Auto Hats—To \$1.00 values, all colors, men's and ladies'. 45c

Boys and Children's Hats—Silk and crash, all colors and sizes, to 75c values, choice. 45c

Read This Big Special Price Cutting Grocery Sale for Friday

Quality goods and a saving of 25% to 50% on the cost of living. 15 lb. best pure cane granulated sugar, per bag, \$1.00. 45-lb. sacks best high grade Diamond flour, nothing finer for bread, pie or cakes, sack, \$2.00. 15 lb. best white or yellow cornmeal, \$1.00.

Domestic Room Friday and Saturday

Boys' \$1.25 Indian Play Suits, 75c. Complete suit with long leather head-piece, made of good, strong khaki cloth, trimmed with red fringe, sizes 4 to 12 years, on sale in Domestic Room only, \$1.25.

Domestic Room Friday and Saturday

75 Suits that sold at \$10.00 and \$12.50, \$5.00. Young Men's and Men's sizes. Only 75 suits in the assortment. Every one made of all wool fabric and nicely tailored. Here is just the sizes we have when the sale opens: Sizes: 32[33]34[35]36[37]38[39]40. Quits: 2[19]18[15]2[2]3[2]

Domestic Room Friday and Saturday

3,000 Yards of Silk Remnants, lengths from 1 1/2 to 15 yds., 20 to 36 inches wide, Messalines, Taffetas, Pongees, Tub Silks, Foulards, Novelties, etc., to 59c yard values, on Silk Square, yard. 28c

Domestic Room Friday and Saturday

\$1.25 All-Silk Crepe de Chines, 40 inches wide, and 40-in. Silk Poppins, all colors, on sale in Silk Department, yd. 88c. \$1.25 Black Silk Chiffon Taffetas, 36 inches wide, rich, lustrous finish, on sale in Silk Department, at, yard. 88c

Money Saving Friday Sales in Domestic Room

Special bargain offerings from nearly every department, every one of them money-savers or they wouldn't be listed here. You'll find twenty-four big squares and thirty tables piled high with an unusual assortment of goods that you want right now priced greatly below cost.

LACE CURTAINS of all kinds, full size, pretty patterns, regular value to \$1 pair, all on sale, Domestic Room, pair. 39c

Amoskeag Apron Check Gingham at 5c Yard. 10 Yards to each Customer—No Mail or Phone Orders Filled.

Utility Brand 10c Dress Gingham at yard. 6 1/2c. Bleached 4-4 1/2c Muslin, an extra good quality, per yard. 6 1/2c. Bleached French Seamed Bed Sheets, 81x90 size each. 50c. Bleached 10c Bath Towels, hemmed or fringed, at each. 7 1/2c. Amoskeag Daisly Cloth, 12 1/2c Shaker Flannel, per yard. 9 1/2c. Cream Wool Flannel, silk embroidered, for infants wear, yard. 39c. Voile, Batiste, Swiss and Crepe 10c Wash Dress Fabrics, yard. 10c. Wash Cloths, knitted 5c kind, 3 for. 5c. Infants' 45c Blankets, 30x40 size, pinks, blues, and gray, each. 25c. Women's Long Silk Gloves, black only, made to sell at \$1.00, choice, pair. 25c. Women's 2-Button Silk Gloves, in Taffeta silk, made to sell to 50c, at. 10c. Children's Parasols, all colors, 25c values, per each. 9c

Two Rousing Glove Specials. In Domestic Room Friday. Women's Long Silk Gloves, black only, made to sell at \$1.00, choice, pair. 25c. Women's 2-Button Silk Gloves, in Taffeta silk, made to sell to 50c, at. 10c. Children's Parasols, all colors, 25c values, per each. 9c

Hosiery. In Domestic Room. Women's and Children's Cotton Hose, 1 1/2c quality, black, white and tans, medium weight, all sizes, pair. 5 1/2c. Women's and Children's Hose, 1 1/2c quality, 11/16 or cotton, black or colors, light and medium weight, all sizes, at pair. 10c

Jewelry. In Domestic Room. Rhinestone Set Jewelry, to 50c values, including cuff links, bar pins, brooches, la valieres, small hat pins, etc., your choice. 15c. Fancy Rhinestone Barrette and Braid Pins, regular values up to 50c, on sale Friday at choice. 10c. \$1.00 Alarm Clocks. 49c

Women's Underwear. In Domestic Room. Pretty Muslin Combination Suits, Skirts and Gowns, lace and embroidery trimmed up to \$1.50 values, samples and odd lots, choice. 29c. Women's Knit Union Suits, all sizes, to 50c values, Friday at choice. 19c. Corset Covers and Drawers, to 50c values, choice. 15c. Lisle and Cotton Vests, in all sizes, to 25c values. 10c

Misses' and Girl's Dresses. Values from \$1.25 to \$2.00, sizes 13 to 18 years, in pretty ginghams, lawns, madras, some lace and embroidery trimmed, on sale at, choice. 69c. Women's White Wash Dress Skirts, to \$16.00 values, in linens, piques and fine ratines, last season's stock, but great snaps at, choice. 98c. Women's Wash Dresses, made to sell to \$3.00, in stripes, voiles, batistes and madras; prettily trimmed; great snaps Friday, choice. \$1.49. Women's and Misses' Tailored Suits—To \$12.50 values, with messaline lined coats that can be worn with other skirts; choice of lot. \$3.95. Women's and Misses' Dress Skirts—Made to sell to \$5.00, in wool poplins, gabardines, serges and striped and checked styles; for selection at. \$1.98

Embroideries

Up to 10c-yard values; Friday, yard, 2 1/2c. A big line of edges and insertings, also Cluny and Torchon Laces. Wonderful values Friday in Domestic Room.

Fancy China Cups and Saucers—Regular 25c a pair values; on sale Friday in Domestic Room.

Fancy China Powder and Hair Receivers—Plates 7 and 8-in., gold band, semi-porcelain plates; at, each. 10c

Salad Bowls, Pitchers, Sugar and Creamers, Bakers, Platters, etc.; to 50c values; Friday, each. 19c

10c Glass Berry Dishes—Each. 5c. Celery Trays and Vinegar Cruets—To 20c values; choice, Friday. 5c

75c Corsets—Medium bust, long skirts, Domestic Room. 49c

Boys 75c Wash Suits—Slightly soiled, 25c

35c Brasieres—Nicely trimmed, at. 19c

Children's 15c "M" Waists at. 9c

Notion Specials

Coats' Thread, per spool. 4c. Coats' Darning Cotton, sp. 1 1/2c. Pearl Buttons, per doz. 1 1/2c. 4 cards Nursery Pins. 5c. 20c Hose Supporters, pair. 5c. 25c Purses, each. 10c. Dress Buttons, per doz. 5c. Many Other Specials.

Drug Dept. Snaps

In Domestic Room. 10c and 15c Toilet Soaps—some 20 different kinds, including Dr. Mann's Health Soap; slightly soiled, at two for. 5c

10c Jap Rose and Palm Olive Soaps, per bar. 6c. 50c Jar Mentholatum at. 25c. 25c Jar Williams' Talcum. 10c. And Many Other Items.

Choice 98c

Extra Special—A 3-piece set, consisting of a 3-qt. Preserving Kettle, 3-qt. Berlin Sauce Pot and 2-qt. Lipped Sauce Pan, these three for. 98c

Domestic Room Friday and Saturday

Boys' \$1.25 Indian Play Suits, 75c. Complete suit with long leather head-piece, made of good, strong khaki cloth, trimmed with red fringe, sizes 4 to 12 years, on sale in Domestic Room only, \$1.25.

Boys' 50c Knickerbockers, 3 years to 10 years, only 25c—Only a limited quantity of these 50c Knickerbockers left, while they last Friday, 25c.

Boys' \$2.95 and \$3.50 Suits at \$1.95—Ages 7 to 16 years, in all colors. Norfolk style with stitched or belt all around. Blue serge and fancy colors. Pants are cut full with new pattern buckles, on sale Friday and Saturday, only, at. \$1.95

Domestic Room Friday and Saturday

75 Suits that sold at \$10.00 and \$12.50, \$5.00. Young Men's and Men's sizes. Only 75 suits in the assortment. Every one made of all wool fabric and nicely tailored. Here is just the sizes we have when the sale opens: Sizes: 32[33]34[35]36[37]38[39]40. Quits: 2[19]18[15]2[2]3[2]

Domestic Room Friday and Saturday

\$1.25 All-Silk Crepe de Chines, 40 inches wide, and 40-in. Silk Poppins, all colors, on sale in Silk Department, yd. 88c. \$1.25 Black Silk Chiffon Taffetas, 36 inches wide, rich, lustrous finish, on sale in Silk Department, at, yard. 88c

500 Untrimmed Hats

Shapes made to sell at \$1.29 and \$1.98. Over 50 different styles; at, choice. 49c

Sailors, Tricornes, Turbans, Leghorns, Milans, Hems, Panamas, etc.; black, white and colors.

\$1.00 Ostrich Pompons. Very beautiful large and graceful, both white and colors; your choice, 49c

Both Items in Domestic Room.

Four Rousing Silk Specials

3,000 Yards of Silk Remnants, lengths from 1 1/2 to 15 yds., 20 to 36 inches wide, Messalines, Taffetas, Pongees, Tub Silks, Foulards, Novelties, etc., to 59c yard values, on Silk Square, yard. 28c

85c and \$1.00 Dress Silks, including 36-in. Striped Messalines, 36-in. Poppins, 27-in. Satin Messalines, Tub Silks, Crepes, Jap Silks, etc., on Silk Square, yard. 68c

\$1.25 All-Silk Crepe de Chines, 40 inches wide, and 40-in. Silk Poppins, all colors, on sale in Silk Department, yd. 88c

\$1.25 Black Silk Chiffon Taffetas, 36 inches wide, rich, lustrous finish, on sale in Silk Department, at, yard. 88c

Try HAYDEN'S First