

Everything for the Garden



SPRING SEEDS

Your lawn should have a reseeded of our Standard Grass Seed and Fertilizer to insure a perfect green lawn for the entire season. Ask for Catalog.

Stewart's Seed Store

119 North Sixteenth Street. Phone Douglas 977. Opposite Postoffice.

Ornamental Trees and Shrubs

Also Fruit Trees and Small Fruits OF OUR OWN GROWING. Strong Concord Grape Vines, 50c per dozen. \$3.00 per 100. FIRST CLASS APPLE TREES, 3 ft., 1.00. 4 1/2 to 6 ft., 1.50. Heavy Apple Trees, 6-7 ft., 35c each.

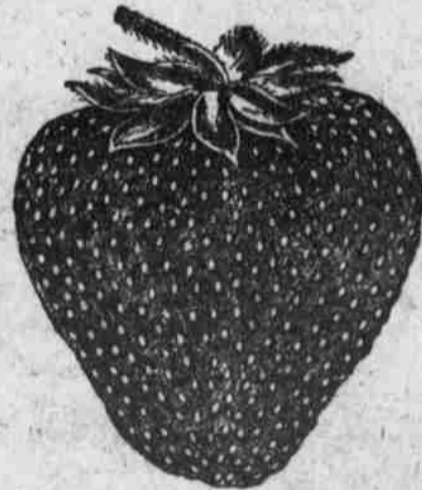
OTHER FRUIT TREES PROPORTIONATELY LOW. A large stock of Dwarf Mulberry in all sizes at greatly reduced prices. Large assortment of other hedge plants. Large stocks of Shrubs and Roses. We save you 30% of the agents' prices.

WRITE, CALL or PHONE Benson 534. Office and Salesground, 61st and Riggs Streets.

Benson-Omaha Nurseries

P. J. FLYNN, Proprietor BENSON, NEB.

WANTED! WANTED!
C. SNYDER & SONS of Atlantic, Iowa,



Free catalogue. Tells how to grow them.

are going to close out 5 acres of thoroughbred Senator Dunlap strawberry plants at wholesale prices. They must be closed out by May 15, and to do so we are going to send to any address 300 thoroughbred Senator Dunlap plants for \$1.20 postpaid, or \$1.00 by Express, F. O. B., 1,000 plants \$2.50 by express, 100 plants 50c by express, or 50c by mail, postpaid. All plants are new plants and dug from new beds, well rooted and are sure to grow. A few quarts sold will pay for them.

NURSERY STOCK

The Biggest and Best Line of all kinds of Fruit, Shade and Ornamental Trees, Small Fruits and Shrubbery ever seen or sold in Omaha will be on sale, starting Monday, April 5th. Apple Trees, 10c and up; Cherry Trees, 15c and up; Grapes, 5c and up; Currants, 10c and up. Roses by the thousand, from 10c and up. Other stock as low. Must be sold.

COME AND SEE FOR YOURSELF.

GATE CITY NURSERY, 1318 Dodge St.

CARE OF THE HYDRANGEA.

What are known to many as tender varieties of the hydrangea are not all as tender as is generally supposed. Many of these are in a degree hardy in a latitude south of Illinois and only require a slight protection of coarse manure or litter to protect the tender shoots which produce the flower buds. When this protection is given it should be allowed to remain until all danger of frost is past.

North of this latitude most varieties are easily killed, and to avoid this they should be kept in tubs or large flower pots in a frost-proof cellar during winter. When removed from the cellar they should go into light and heat somewhat gradually, which will insure a greater and more prolific foliage and bloom.

When the plant has started nicely there should be a little liquid manure given the plant twice a month at first, and then once a week, and later two or three times a week. It requires plant food to nourish a plant of this type and make it produce flowers in abundance.

Pink flowers sometimes change to blue. This is due to certain properties in the soil. A pink or blue flower may be changed to the other color by placing a few iron filings or small nails in the soil, or by mixing a little soot with the earth about the roots.

Powdered alum mixed with the top dressing of earth in a hydrangea tub if applied in small quantities will change the colors as well as soot or iron. Small lumps of alum are better than the powder, as the soil with its moisture can absorb just what is needed.

ENEMIES OF ROSES.

If rose bushes are ragged and sickly owing to the attack of slugs, the blossoms will be poor, faded ones, but if care has been given the bushes to prevent disease or attack from injurious insects, the bloom will be full and brilliant, and the perfume will not only be stronger, but more delicately scented. If you own roses you must own a gun and keep some insect powder in the house ready for the pests. Apply it at night, to catch the little creatures awake and at work and to get the assistance of nature through the moisture.

It would be well to examine even the small fruit or ornamental trees, and if they are infested with ants or any other kind of insects give them a shot of the powder. It is not unlawful to discharge this sort of a gun, and there is no license charged for carrying one.

PLANTING YOUR LANDSCAPE

The most essential part of your landscape planting is getting exactly what you want, and having the planting so grouped that it will fit and harmonize with the building and surroundings.

One Hour from the Nursery Row to Your Grounds

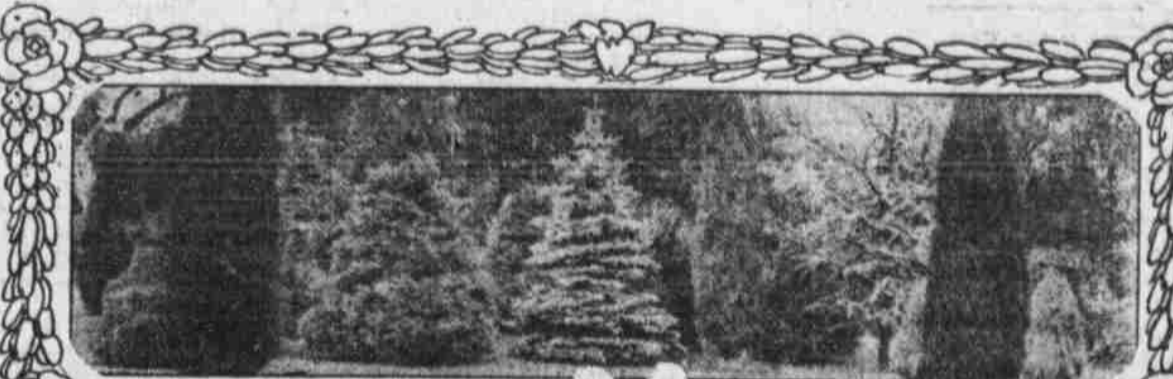
Another essential part of the work is having the trees and shrubs delivered promptly. Our Nurseries are in the city limits and the stock can be delivered to you in one hour from the time it is dug. Our landscape architect will be pleased to call on you, giving instructions what and how to plant.

M. P. BYRD NURSERY COMPANY

Sales Ground Cor. 17th and Dodge Sts. Rear of Haydens Store.

Our Nursery Stock

was never finer than it is this year. Everything you want you can get here. Bring this and with you and get a free souvenir with each purchase.



MARKERS AND A REEL

One of the little things commonly overlooked in the garden is careful marking of both vegetables and flowers in order that one may keep tabs on varieties, dates, yields, colors and so forth. How often one sees an empty seed packet on a stick or held down by a stone as the only garden record! It does not take long to learn that such a makeshift tag will be blown away or obliterated by the mud and rain. When 100 eight-inch garden labels can be bought for 35 cents there is no excuse for the gardener who does not know when and where he has put everything that grows in his garden. A more expensive, but more convenient form of label is a small plate placed at a convenient angle on an upright iron stake; on this a record card can be kept plainly visible, but protected from the elements.

If you have not made a planting plan in advance secure a good-sized armful of stakes; pieces of shingle, or kindling strips, or whips of willow or birch—before you begin to sow seeds. Stick them up along one edge, marking off with each the space for one variety of seed.

If you haven't a reel and a marking line, by all means get a ball of stout twine and a couple of short sticks. For rows of plants, or for such seeds as are not planted with the seed drill, a one-row marker may be made by nailing or bolting a strip of inch stuff to the wheelbarrow. A regular marker may be made easily with a six-foot strip of two-by-two-inch pine and a half dozen twelve-inch spikes. Find the center of the strip and make marks six inches from the center on each side; then make marks every twelve inches each way to the end. Bore six holes slightly smaller than the spikes and drive these into place. Fasten a handle to the strip.

Probably nothing will so cut down the gardener's work, take it the season through, as bright, sharp tools. After using them wipe them off with a few old pieces of burlap and then go over them with a cloth well soaked with oil. Have a good flat file, costing 15 or 20 cents, with which to "touch up" your hoes, wheel-hoe attachments and so forth, as they become dulled through use. If the heads of any of your tools become loose half a day's soaking in a pail of water will usually tighten them up. If the garden is not handy to the tool shed much time may be saved by getting a substantial dry-goods box of convenient size, fitting it up with a pair of cheap hinges and a couple of shelves, and giving it a coat of paint; it will make a miniature tool house to be kept at the head of the garden.

MENERAY'S SUPERIOR QUALITY TREES

Guaranteed in Every Way—Prices Right

Be sure that the order blank reads: Meneray-Omaha Nursery Co. Do not be confused by a similarity of names. Also beware of misrepresenting salesmen. We are represented in Omaha, South Omaha and Council Bluffs by the salesmen named below, only: F. W. Meneray, A. O. Meneray, M. Jackson, C. L. Clark, J. Hoolobie, W. Majovsky and W. A. Webber. If solicited by other salesmen, claiming to represent us, phone our office before ordering.

We are the Old Established Meneray Nurseries, since 1863, only large growers in the vicinity of Omaha or Council Bluffs. Be sure your order reaches us.

LANDSCAPING A SPECIALTY—SATISFACTION ASSURED

438 State Bang Bldg. Phone Tyler 1194. 31st Street and Avenue A. Phone 872. Omaha, Neb. Council Bluffs, Iowa.

Wire and Iron Fences and Gates for Lawn, Garden and Poultry Yards. Trellises for vines and roses. Grape Arbors. Flower Borders



CHAMPION IRON & WIRE WORKS, 15th and Jackson. Tel. Doug. 1590

MAKING THE OLEANDER BLOOM.

A subscriber asks how to induce an oleander to bloom each year, saying that the plant has failed under his care.

The oleander is not a difficult shrub to grow, and usually under proper culture it will bloom each year. The plant requires plenty of root space, and is set in either a large flower pot, or a tub made especially for such plants.

A Successful Lawn

Requires a variety of grass adapted to the soil. Let our service department help you make your lawn a good one.

The Nebraska Seed Co.

Douglas 1261 1613 Howard Street

THE EASIEST WAY

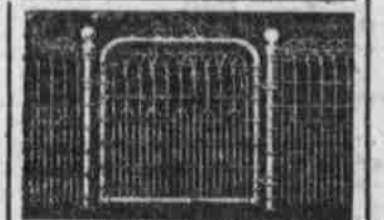
is always the best when it is also the most effective way, and when things have to be done, as in keeping chickens free from vermin and preventing their minor disorders from becoming epidemic or virulent.

Lee's Lice Killer and Germano are essential to success with poultry. The former is simply sprayed or dusted on roosts and kills all insects there as well as the lice on the bodies of the chickens roosting over it, scaly leg, mites, etc. No handling, dusting, dipping or greasing. Germano is given in the drinking water. It purifies the water and vessels. It prevents contamination from one to the other. It counteracts musty or spotted food. It prevents and relieves bowel trouble. It is a ready remedy for roup, colds, swollen head, cancer or skin disease.

Conveniently obtainable at most every city or town.

Get our free Poultry Book.

GEO. H. LEE CO., Mfrs. Omaha, Neb.



Cyclone Sanitary Lawn Fence

is the highest grade fence on the market—heavier, stronger and closer spaced than any other. Complete, erected on wood post, 25 cents per lineal foot, and up.

We carry a full line of wire and iron fences and gates, trellises for roses and vines, flower bed borders, fence stays, carbide steel points for field fencing. Come in and see the line and get our low prices. Send for catalogue.

ANCHOR FENCE CO.

507 N. 17th St. Phone Red 614.

SOW LAWN GRASS SEED

FREE Booklet

We have prepared a fine little booklet on HOW TO MAKE A LAWN and BEAUTIFY the HOME.

It tells how to make old lawns new, what kind of grass seeds to use, and contains much information about trees, shrubs and plants.

Drop us a postal card and We Will Mail You a Copy

DO IT NOW!

Choice New Crop Seed at Low Prices—Kentucky Blue Grass... 1b. 50c; 5 lbs. \$1.00 White Dutch Clover... 1b. 50c; 5 lbs. \$1.00 Evergreen Lawn Grass... 1b. 50c; 5 lbs. \$1.00 Hardy Fine Lawn Grass... 1b. 50c; 5 lbs. \$1.00 Terrace Lawn Grass... 1b. 50c; 5 lbs. \$1.00

Postpaid to any home in Omaha at above prices.

Patrons in other Nebraska towns add 4c per pound for postage.

IOWA SEED COMPANY

Des Moines, Iowa

An Acre of Ground with a Brand New House

This acre home can be bought on easy terms—small cash payment; balance like rent.

Large vineyard; big crop of grapes last year; balance of soil fine for truck gardening.

Will take you to see this any day next week if you'll phone us.

Bankers Realty Investment Company

Ground Floor Bee Building. Telephone Doug. 2926.

NOW IS THE TIME

TO PLAN YOUR

Back Yard Garden

This page will tell you how to do it and where to buy

Seeds, Shrubbery, Etc.