

GRAIN AND PRODUCE MARKET

Exports in Wheat Puzzling to the Local Traders.

ALL GRAINS CLOSE LOWER

Wheat Off from One and a Half to Two Cents, Corn Half to One Cent and Oats One-Half to One Cent.

OMAHA, Sept. 26, 1914.

There was much speculation as to the amount of wheat sold for export from here yesterday, and many in the trade were inclined to believe that the figures reported were far below the actual total.

It was an irregular trade in oats, with prices at the finish unchanged to 1/4c higher than Thursday. There was liberal buying of futures by export houses, which was offset to a large extent by hedging.

Primary wheat receipts were 2,551,900 bu. and shipments 1,000,000 bu. against receipts of 1,000,000 bu. and shipments of 771,000 bu. last year.

Table with columns for Wheat, Corn, Oats, and various grades. Includes sub-sections for 'NEW YORK GENERAL MARKET' and 'KANSAS CITY GRAIN AND PROVISIONS'.

Table with columns for 'CLEANING HOUSE BANK STATEMENT' and 'NEW YORK MONEY MARKET'. Includes financial data and interest rates.

CHICAGO GRAIN AND PROVISIONS

Features of the Trading and Closing Prices on Board of Trade. CHICAGO, Sept. 26.—Sharp reductions in prices at Liverpool caused a decided setback today in the wheat market.

NEW YORK MONEY MARKET

NEW YORK, Sept. 26.—PRIME MERCANTILE PAPER 7 per cent. Crushed 2000 Bushels, any size 1.10 per ton.

MARTIN-HOWE COAL COMPANY

Follow These Wise Coal Buyers Order Tecumseh Now. Thousands of careful coal buyers in your city now buy Tecumseh Coal.

W. E. Howe, Pres. Job Freeman, Vice Pres. David Ziegler, Cash. 1909 McCormick Building, Chicago.

The recovery was held by reason of 500,000 bushels having been sold today for shipment to Europe from gold ports.

Helpful Suggestions for the New Home

A Modern Seven-Room Home

This plan and exterior design as illustrated always appeals to the person who desires a well-arranged and convenient floor plan, together with an exterior of massive appearance formed by simple lines of roof construction.



For further particulars in any way, see architect, ground floor, Bee building, Bankers Realty Investment Company, Omaha.

OMAHA LIVE STOCK MARKET

Some Kinds of Cattle Steady, Others Lower for the Week.

HOGS SLUMP DURING THE WEEK

Fat Sheep Fifty Lower and Feeders Steady for Week—Fat Lambs Seventy-Five and Feeders Ten to Quarter Down.

SOUTH OMAHA, Sept. 26, 1914.

Receipts were: Cattle, 100; Hogs, 400; Sheep, 100; Lambs, 100.

NEW YORK CATTLE MARKET

NEW YORK, Sept. 26.—CATTLE—Receipts, 1,000 head; market steady; native beef steers, \$7.00@8.00; cows and heifers, \$6.00@7.00.

ST. LOUIS LIVE STOCK MARKET

ST. LOUIS, Sept. 26.—CATTLE—Receipts, 1,000 head; market steady; native beef steers, \$7.00@8.00; cows and heifers, \$6.00@7.00.

ST. JOSEPH LIVE STOCK MARKET

ST. JOSEPH, Sept. 26.—CATTLE—Receipts, 1,000 head; market steady; native beef steers, \$7.00@8.00; cows and heifers, \$6.00@7.00.

CHICAGO LIVE STOCK MARKET

CHICAGO, Sept. 26.—CATTLE—Receipts, 1,000 head; market steady; native beef steers, \$7.00@8.00; cows and heifers, \$6.00@7.00.

EVERETT S. DODDS ARCHITECT

Phone, D-2981 612 Paxton Block

E. J. DAVIS SAFE MOVER

Heavy Hauling 1212 Farnam PHONE DOUGLAS 353

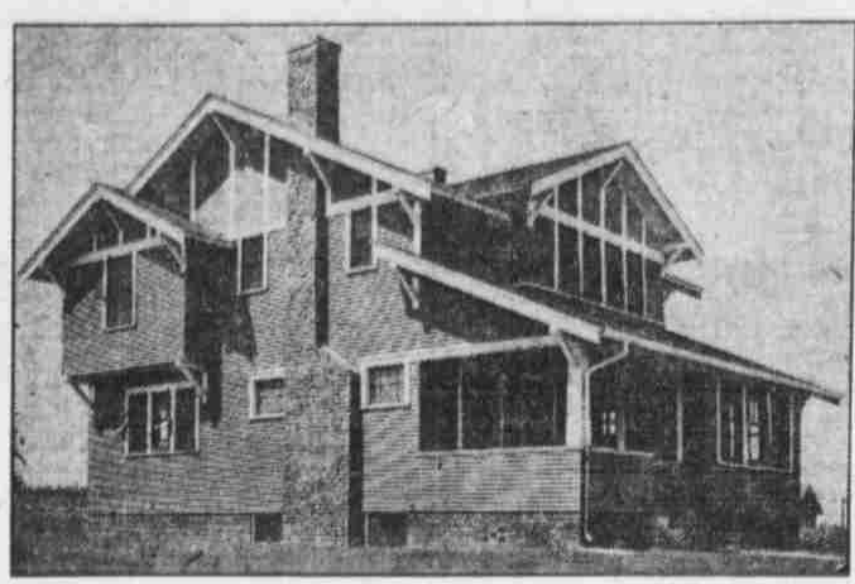
Specify HY-TEX BRICK

HYDRAULIC PRESS BRICK COMPANY, 1302 W. O. W. Bldg.

Helpful Suggestions for the New Home

A Modern Seven-Room Home

This plan and exterior design as illustrated always appeals to the person who desires a well-arranged and convenient floor plan, together with an exterior of massive appearance formed by simple lines of roof construction.



LUMBER TRADE UNCERTAIN

Wholesale Dealers Find Business Over State is Scattered.

BUT EXPECT A BETTER TURN

Men in the Business Anticipate Considerable Activity When Crops Are Sold and Farmers Improve Buildings.

Wholesale lumber dealers are finding the lumber trade in the state somewhat scattered and uncertain. That is, they say they cannot tell where they are going to find a good demand for lumber and where they are not.

COMMISSION WON'T GIVE OUT NAMES OF DRAFTED MEN

CINCINNATI, O., Sept. 26.—It was announced at the headquarters of the National Base Ball commission here today that the names of players drafted by the National and American leagues would not be given out by the commission, but that the individual clubs would make them public when they so desired.

Protection the Best

Every dollar invested in Home Builders is protected by real estate mortgages and cash—and not by real estate improved or vacant.

Open for Investigation

Home Builders' Charter, regularly issued under the laws of Nebraska, its Articles of Incorporation and By-Laws and also its books of records are open any time for serious investigation.

Expect Increased Trade.

In spite of the war in Europe, however, lumbermen look for an increased and steady demand for lumber very soon, as they hold that the extra money the heavy crop and increased prices will pour into the pockets of the farmers this year.

Our free booklet, the "New Way" explains our plan fully.

HOME BUILDERS

202 SO. 17TH ST. OMAHA

NEW YORK GENERAL MARKET

NEW YORK, Sept. 26.—WHEAT—Raw, easy; middling, 1.10; crushed, 1.15; XXXX powder, 1.20; XXX powder, 1.25; XXX powder, 1.30; XXX powder, 1.35.

KANSAS CITY GRAIN AND PROVISIONS

KANSAS CITY, Sept. 26.—WHEAT—No. 2 hard, \$1.05; No. 2 red, \$1.00; No. 2 mixed, \$0.95; No. 2 white, \$0.90.

LIVERPOOL GRAIN MARKET

LIVERPOOL, Sept. 26.—WHEAT—Spot, steady; No. 1 Manitoba, \$1.70; No. 2 red winter, \$1.65; No. 3 white, \$1.60.

ST. LOUIS GRAIN MARKET

ST. LOUIS, Sept. 26.—WHEAT—No. 2 red, \$1.05; No. 2 hard, \$1.00; No. 2 mixed, \$0.95; No. 2 white, \$0.90.

CLEANING HOUSE BANK STATEMENT

NEW YORK, Sept. 26.—The statement of the average condition of clearing house banks and trust companies for the week ending Sept. 26, 1914, shows that the cash reserve increased \$174,700, leaving a deficit of \$20,700,000 below normal requirements.

SOUTH OMAHA, Sept. 26, 1914.

Receipts were: Cattle, 100; Hogs, 400; Sheep, 100; Lambs, 100.

NEW YORK CATTLE MARKET

NEW YORK, Sept. 26.—CATTLE—Receipts, 1,000 head; market steady; native beef steers, \$7.00@8.00; cows and heifers, \$6.00@7.00.

ST. LOUIS LIVE STOCK MARKET

ST. LOUIS, Sept. 26.—CATTLE—Receipts, 1,000 head; market steady; native beef steers, \$7.00@8.00; cows and heifers, \$6.00@7.00.

ST. JOSEPH LIVE STOCK MARKET

ST. JOSEPH, Sept. 26.—CATTLE—Receipts, 1,000 head; market steady; native beef steers, \$7.00@8.00; cows and heifers, \$6.00@7.00.

CHICAGO LIVE STOCK MARKET

CHICAGO, Sept. 26.—CATTLE—Receipts, 1,000 head; market steady; native beef steers, \$7.00@8.00; cows and heifers, \$6.00@7.00.

OMAHA LIVE STOCK MARKET

Some Kinds of Cattle Steady, Others Lower for the Week.

HOGS SLUMP DURING THE WEEK

Fat Sheep Fifty Lower and Feeders Steady for Week—Fat Lambs Seventy-Five and Feeders Ten to Quarter Down.

SOUTH OMAHA, Sept. 26, 1914.

Receipts were: Cattle, 100; Hogs, 400; Sheep, 100; Lambs, 100.

NEW YORK CATTLE MARKET

NEW YORK, Sept. 26.—CATTLE—Receipts, 1,000 head; market steady; native beef steers, \$7.00@8.00; cows and heifers, \$6.00@7.00.

ST. LOUIS LIVE STOCK MARKET

ST. LOUIS, Sept. 26.—CATTLE—Receipts, 1,000 head; market steady; native beef steers, \$7.00@8.00; cows and heifers, \$6.00@7.00.

ST. JOSEPH LIVE STOCK MARKET

ST. JOSEPH, Sept. 26.—CATTLE—Receipts, 1,000 head; market steady; native beef steers, \$7.00@8.00; cows and heifers, \$6.00@7.00.

CHICAGO LIVE STOCK MARKET

CHICAGO, Sept. 26.—CATTLE—Receipts, 1,000 head; market steady; native beef steers, \$7.00@8.00; cows and heifers, \$6.00@7.00.

EVERETT S. DODDS ARCHITECT

Phone, D-2981 612 Paxton Block

E. J. DAVIS SAFE MOVER

Heavy Hauling 1212 Farnam PHONE DOUGLAS 353

Specify HY-TEX BRICK

HYDRAULIC PRESS BRICK COMPANY, 1302 W. O. W. Bldg.

Paint the Outside of Your House

Sherwin-Williams Best Paint (50 colors), per gallon... \$2.00 Porch Floor Paint (8 colors), per quart... 55c

Barker Bros. Paint Co.

Douglas 4750. 1609 Farnam St.

Let Us Move, Pack, Store or Ship Your Household Goods or Piano

OMAHA VAN AND STORAGE CO.

If you want absolute security, if you are desirous of getting your goods moved or packed safely, if you wish your goods shipped to your advantage, then let us take full charge.

OMAHA VAN AND STORAGE CO.

806-818 South Sixteenth St.

EVERETT S. DODDS ARCHITECT

Phone, D-2981 612 Paxton Block

E. J. DAVIS SAFE MOVER

Heavy Hauling 1212 Farnam PHONE DOUGLAS 353

Specify HY-TEX BRICK

HYDRAULIC PRESS BRICK COMPANY, 1302 W. O. W. Bldg.

Customers will not hunt for you---

Only when your location is right and easy of access, will they look you up.

THE BEE BUILDING

(The building that is always new) Is Well Known and Well Located and therefore EASY TO FIND OFFICE ROOM 103.

EVERETT S. DODDS ARCHITECT

Phone, D-2981 612 Paxton Block

E. J. DAVIS SAFE MOVER

Heavy Hauling 1212 Farnam PHONE DOUGLAS 353

Specify HY-TEX BRICK

HYDRAULIC PRESS BRICK COMPANY, 1302 W. O. W. Bldg.