

USE OF GAS IN APARTMENTS

Once Used Only for Light, but Now Plays Many Parts.

IMPORTANT HOUSEHOLD DETAIL

Architect and Builders Understand Piping of Houses for Gas is Just as Much an Essential as Water Piping.

In the modern Omaha home and apartment house the employment of gas for numerous purposes outside of illumination has become so general that it now forms an important part of the household equipment as the bath tub and the water faucets.

Up to within a comparatively recent period the use of gas was confined almost entirely to lighting, but with the constantly increasing number of tenements—which is the official designation of the flat or apartment house—this modern agent of civilization has been put to a remarkable variety of uses.

For lighting it long since has superseded the candle and the oil lamp. Up to within about ten years the open flame burner encompassed within a round ground glass globe was the usual method for illumination. This was succeeded by the gas mantle light and which has come into such general use that \$2,000,000 of them are manufactured every year.

Rapid Progress Made.
The old-fashioned flats built twenty years ago were equipped with coal ranges and in some instances with wood burning stoves. Each family had its own coal bin in the cellar and it was the early morning duty of the janitor to send up scuttles after scuttles of coal until the entire house had been supplied with the means of starting breakfast and providing heat.

In the hot summer days the use of gas for cooking was rapidly followed by its utilization in the rapid heating of water for domestic purposes, so that in addition to the softly diffused light from the incandescent gas mantle there was added the water heater, that gave a boiling supply, simply by the turning of the key in the faucet.

Architects and builders in Omaha now understand that the proper piping of apartment houses for gas is as much an essential as the water piping, and they are giving this particular part of their business more attention than it has received heretofore.

The new City Emergency hospital, which will be opened in the old Anna Wilson property at 312 Douglas street very soon, will be furnished completely by Hayden Bros., who have just been awarded the contract for supplying all furniture and the entire equipment, from toothpicks to beds. There are more than twenty rooms in the building, and each of these will be fitted up in elegant manner by Hayden Bros. The orders for the furnishings have been filed with instructions to rush them.

Brass and iron beds will be used in the various rooms of the patients, while golden oak dressers, very handsome and sanitary, will be furnished for the individual rooms. Pretty golden oak chairs, harmonizing in design and color with the dressers, will be furnished for the rooms. Special beautiful furniture is being made for the matron's room, which will be one of the handsomest hospital rooms in the city. For the dining room specially designed chairs and tables are being made.

All the utensils and equipment for the kitchen are being supplied by Haydens. A select assortment of kitchen articles of excellent manufacture is being rushed here for this department. Not a single article that will be used in the hospital will be purchased from any other firm. Even the ice picks and coal shovels are coming from Hayden Bros.

The department of home furnishings of this big store is selecting the curtains, rugs, wall papers and draperies that will be used in the building. These are to be of handsome, durable designs, being made especially for this new hospital. The order is one of the largest of its kind and will be filled as rapidly as the articles can be secured.

Many people who have what they think is a good furnace, when in fact it may be a good furnace with a large fire pot, burns lot of coal and gets poor results owing to its small radiating surface. In this case 40 to 50 per cent of the heat energy is lost as the furnace has not sufficient radiating surface to absorb the heat units it being a well known fact that air is heated only by coming in contact with a hot surface. This is why so many well made furnaces do not deliver a sufficient amount of heat and a proportionately large amount of coal is consumed. The solution of this problem is to suspend in the dome of the furnace several Maltese Water Heaters, so that they absorb all the extra hot gases that usually pass out of the chimney in unconsumed gases. Attach to these heaters hot water radiators, placing the radiators on the outside walls, calculating on about 50 per cent extra heat for cool rooms and from 40 to 50 per cent for rooms that do not heat real well when the temperature is twenty degrees below zero. This system is almost the last word in perfect heating, for it combines the quick results of warm air and steady heat of hot water. It is an automatic arrangement. Much of this class of work is being done by the Omaha Stove Repair works whose men specialize on this system of heating with remarkable results.

The Omaha Van and Fireproof Storage company, Sixteenth and Leavenworth streets, reports that the fall moving in Omaha is greater than in any recent year. Hundreds of families are making changes for the winter and the moving season now is a reminder of the spring period, when thousands of families make changes in residences.

The prevention of the erection of buildings above a certain height would do much to stop a concentration of land values at certain strategic points, and would spread them uniformly over a wide area. In New York land values in the skyscraper district are fabulous, while a few blocks away on the east side are slum districts that would be just as valuable as sites for office buildings were a demand created for them by a limitation of the height of such structures. The same condition will undoubtedly develop in other cities if council and owners give free rein to builders. Public opinion seems to be ripening in the direction of the application of a regulation generally enforced in Great Britain—namely, that no building shall be higher than one and a half times the width of the street on which it stands, and that will limit the average height to about nine or ten stories.

Homes that Are Different

By Arthur C. Clausen.

DESIGN NO 797

FIRST FLOOR.
THE 312 & 29 ST. x 24 1/2 FT.

SECOND FLOOR.

"HOMES THAT ARE DIFFERENT."

BEING ONE IN A SERIES OF NEW AND ORIGINAL DESIGNS DRAWN TO SHOW NEW ARRANGEMENTS OF DESIGN AND MATERIALS COMBINED FOR PICTURESQUE EFFECT.

Arthur C. Clausen
ARCHITECT

LUMBER EXCHANGE, MINNEAPOLIS, MINN.

EVERYONE has a hobby. This series of articles is going to be mine for some months to come. All designers have imprisoned in their storehouse of artistic imaginings creations that cry out for expression. An architect's conception of heaven is to be able to design and build anything that satisfies his ambitions and longings to produce "art for art's sake." None but a designer knows and can appreciate the pangs of having to add or detract something that utterly spoils a good design in order to satisfy the man who pays the bills.

MR CLAUSEN'S BOOK
"The Art, Science and Sentiment of Homebuilding."
Thirty chapters, 300 illustrations. It covers a wide range of subjects, including the planning of bungalows, suburban and city homes, costing from \$2,000 to \$20,000, letting contracts, choosing materials, proper design of entrances, windows, fireplaces, etc. New third edition. Price, postpaid, \$1.00.
Address, Arthur C. Clausen, Architect, 1136-37-38 Lumber Exchange, Minneapolis, Minnesota.

however, that some one would discover a remedy for this condition, and that prophecy has been fulfilled.

There is a class of iron now manufactured which is not as brittle as cast iron that is pliable and will not rust. It is called ingot iron. It belongs to science and no one has any patents on it. Ingot iron is cheaper than galvanized iron and better no matter for what purpose it is being used.

A good combination of colors for design No. 797 would be a light gray cement for the lower story, vitrified paving brick for water table, steps and chimney, with light brown stained wall shingles and moss green roof shingles with a cream white trim. Painting the window sash, but not the frames, a light green. This is a combination frequently used by the writer and always produces a picturesque effect. Another combination would be a very dark gray cement dark green roof. (Bear in mind the fact stucco, dark brown wall shingles, a still darker brown (almost into a maroon) for the trim, with black window sash and that different makes of cement work act differently as to color. There is a white cement that produces an almost white

and the buttress corners, relieve the monotony of too much unbroken cement work.

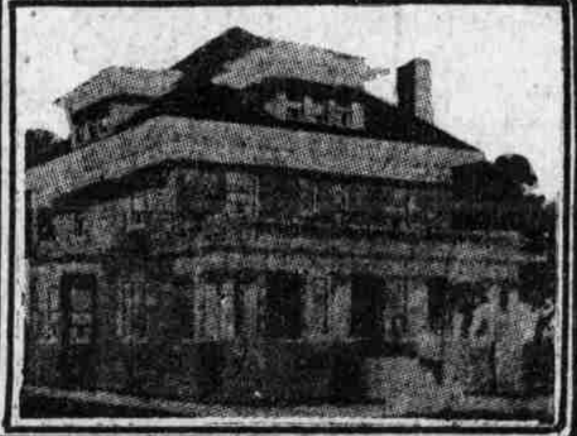
Since cement stucco presents a plain surface, care should be taken to combine it with other materials or break it up in such a way as to avoid monotony.

Old readers will recall that the writer at one time opposed the use of cement stucco construction, calling particular attention to the fact that there was not then a metal lath that would withstand the corrosion test of time. I prophesied,

Model Homes of Nebraskans



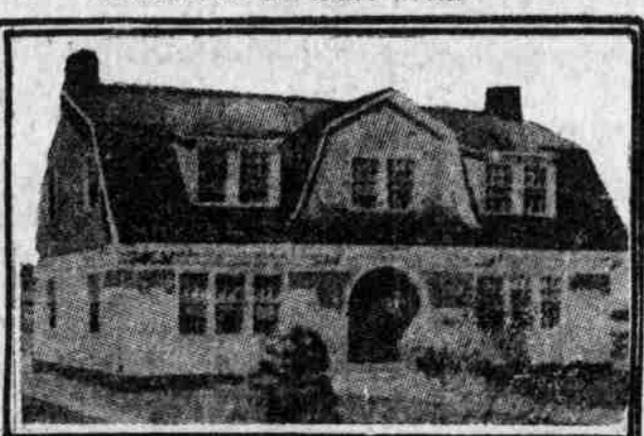
A WEST FARNAM DISTRICT HOME.



A NEBRASKA BANKER'S HOME.



A NEBRASKA GRAIN DEALER'S HOME.



A NEBRASKA FARMER'S HOME.

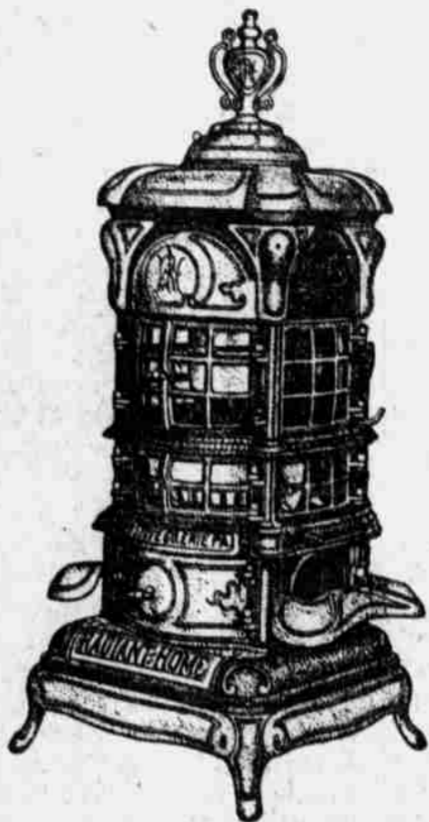


A NEBRASKA CONTRACTOR'S HOME.

These reproductions of photographs with all modern conveniences. The other houses are cut in the state, one being the residence of a cornhusker farmer, another the home of a banker, and the tasteful dwelling of a grain dealer, and the fourth the beautiful home of a contractor.

RADIANT HOME BASE BURNERS

After fifty years in the stove business, we offer the New Radiant Home Base Burners, knowing that they are the best heaters on the market. Always under control they are the most economical of all stoves. We want to show you the beautiful new patterns.



Quick Meal Steel Ranges

The beautiful Quick Meal Ranges are the most efficient in the world. They are absolutely rust-proof, porcelain lined, and waste no heat. We are showing every style.



Stoves and Ranges Sold on Payments

Watch Our Big Window **MILTON ROGERS & SONS CO.** 1515 HARNEY Largest Stove Line in The West

ANNOUNCEMENT

Monday, September 16th, we will place on sale the celebrated

REFLEX COTTAGE ARC
For Residence Lighting

This light gives the greatest illumination of any light ever made, at a cost of about one-third of a cent per hour, or four times the light of an open burner at one-half the cost, or eight times the light for the same cost.

So as to put this light in reach of all our consumers, we will install it free and receive payment in three small installments, so our consumers can enjoy its benefit while paying for it.

GUARANTEE

These lights are so serviceable that we guarantee to replace, free of charge, any mantle, chimney or globe which may break within three months from date of sale.

So you may see this light with the least possible trouble, we shall begin September 16th sending out a corps of special men who will demonstrate it at your residence.

WATCH FOR THE COTTAGE ARC MAN

He will call on you after September 16th.

OMAHA GAS COMPANY

stucco or pearl gray. There are several makes of Portland cement that produce a light color, a little darker than white cement where others are so dark as to produce almost a bluish gray effect. Dark cement, however, nearly always shows up whitish looking streaks in places in the course of time. To get a light effect masons sometimes mix in a little slacked white lime and while a little does no harm, it is an operation that must be closely watched, for the temptation to use a great deal of lime and save on the cost of cement is sometimes too strong for the mason to stand.

Another combination of color would be a light cement stained cream color with reddish brown wall shingles with a trim including the window sash of dark orange shade and a tile roof, giving a somewhat southern part of the country. The plan is arranged for a west or south front; for an east or north front it should be reversed.

Placing the porch on the side is becoming quite popular again. In this location it is not so apt to make the living room dark and gives the living room a better outlook, especially if there is a bay window on the front that gives a view in several directions. It also makes the house appear as though it were setting farther back on the lot, which adds to its attractiveness.

An intelligent looking front yard will invariably detract from the appearance of any home. Of course, when there are homes already built on either side it does not pay to place the house so far back that the neighbor's kitchen odor will come directly into the living room. There are extremes both ways.

Another parallel instance is the new residence of J. D. Robbins of Malvern, Ia. Sunderland Brothers are furnishing the face brick for both of these residences.

A glance at the building records of Omaha for the past year will show an increase in the number of steamed cured cement stone houses that have been erected. This increase has caused such a growth in the business of the Ideal Cement Stone company that the factories of this firm have been forced to work overtime to fill orders.

Predictions are being made to the effect that within a year or two more Omaha will have more people owning their own homes than any other city of its size in the country. Such institutions as Home Builders, 308 South Seventeenth street, are said to be making this condition probable.

W. H. Thomas, 501 City National Bank building, has a long list of tenants for the new State Bank (Oscar Keeline) building. This new structure will be opened about October 1.

A prominent Omaha citizen, whose offices are fitted up in as tasteful a manner as any in the country, is a "crank" on neatness in stores and offices. He thinks a man's place of business should be just as inviting as his home. A report of his recent remarks on the subject follows:

"With the combined energy of all the producing forces of his store, the man in business is endeavoring to interest customers. The attorney or physician is anxious for clients. The merchant probably has a fine line of goods and has competent salesmen. The doctor and lawyer probably are as good as any in the city. Yet all these men are prone to neglect the complete furnishings of their offices and stores. Nothing helps in forming a favorable first impression so much as good office furniture. The man who steps into a private office sizes up the whole place. If the furniture is ancient and worn, if the walls are dirty, the first thought is that this merchant, or professional man is a has-been. But if the office is properly furnished the man who enters is favorably impressed

and thinks he must be in the right place. Modern sanitary office furniture such as Miller, Stewart & Beaton company sell will give a man the necessary office equipment to make his place up-to-date. Do not neglect your office."

Work on the new Burns "pie foundry" at the northwest corner of Twentieth and Cuming streets is progressing rapidly. This will be the most modern and up-to-date bakery in Omaha, the plans for which were prepared by Architects Fisher & Lawrie. The face brick in this building are being furnished by Sunderland Brothers and run in shades from red to dark green in tapestry effect laid in white mortar.

The contract for the new east side grade school at Atlantic, Ia., was let this week.

The new Grace Methodist Episcopal church building at Lincoln is being faced with light buff tapestry face brick. This church is conceded to be the handsomest building of this class in Lincoln.

Contractors Rahn & Behrman are pushing the work on the Leo Hoffman undertaking parlors at Twenty-fourth and Dodge streets. This building will be faced with Sunderland's waterproof gray face brick.

PLEAD NOT GUILTY ON CHARGE OF GRAND LARCENY

Harry Elkins and Sam Agursky, charged with grand larceny for the alleged theft of valuable furs from Yost, the furrier, pleaded not guilty when arraigned in criminal court. Two charges were filed against each, one for stealing two \$500 fur sets owned by Mrs. Nora D. Sargent of Nebraska City, and one for the theft of a mink set owned by Ruth Lionberger of Omaha. The furs were stored with Yost.

Lee Leigh, charged by the police with bringing young girls into the city for immoral purposes, was arraigned on a charge of contributing to the delinquency of Venus Berry, a 14-year-old girl. He pleaded not guilty and will be tried at the October term of court.