

KENT WILL SUPPORT TAFT

Former Lieutenant of Bryan Objects to One-Man Power.

ONCE WAS CLOSE TO COMMONER

Character Member of Bryan Club Asports Clark Should Have Been nominated and Was Beaten by Frenchman's Description.

(From a Staff Correspondent) LINCOLN, July 14.—(Special.)—I supported William J. Bryan three times in his fight for the presidency...

These are the words of John T. Kent, a prominent democrat of Lincoln and a former lieutenant of Mr. Bryan in his battles for the presidency.

Mr. Kent is a charter member of the Bryan club in Lincoln and was a leading worker in the Bryan Home guards four years ago...

During the campaign four years ago Mr. Kent was arrested for making a demonstration in favor of Mr. Bryan in front of the Grand Army of the Republic headquarters.

Once Saved the Day.

Another interesting incident in Mr. Kent's career as a follower and able lieutenant of Mr. Bryan happened at the time of the national democratic convention...

Unfortunately for them the Rock Island railroad ran for miles along the Antelope valley and in many places the waters were running high over the track.

But Kent was equal to the emergency. Securing a hand car and three husky section men, Mr. Kent took Mr. Bell on board and carried him safely to Rockeby...

Mr. Kent was equal to the emergency. Securing a hand car and three husky section men, Mr. Kent took Mr. Bell on board and carried him safely to Rockeby...

Mr. Kent has written President Taft a letter in which he offers him any assistance he is able to give toward the successful termination of his campaign...

Mr. Kent was not a supporter of Champ Clark at the primaries but he says that he should have had no Mr. Bryan asserted him just on the eve of what would have been his successful

landing of the nomination. "Had Champ Clark been losing ground," said Mr. Kent, "and there had been evidently no chance for him to win, Mr. Bryan might have been justified in going back on the instructions given him by the democrats of Nebraska...

YEAR'S HEAT RECORD BROKEN

Mercury in Colonel Welsh's Chicken Coop Registers 2 Sunday.

TWO MEN FIGHT OVER BREEZE

Hot Winds During Day Drive People to Parks, But Not Much Relief is Found There.

Even the parks were hot yesterday, when the thermometer reached 102, the highest of the year...

South Africans Take First Two Places in Stockholm Marathon

STOCKHOLM, July 14.—K. K. McArthur, the South African runner, won the Marathon race at the Olympic games today...

McArthur's time was two hours, thirty-six minutes and thirty-eight seconds...

Picks Up Bag and Finds Half Million

ALBANK, N. Y., July 14.—Thomas O'Brien, who runs a blacksmith shop in Lafayette street, has a great eye for color, so tonight...

A moment later his eyes were bulging out and he was hurriedly telephoning police headquarters...

The company was notified by telephone, told the police that the checks, with \$22,340 in currency, had been sent by a messenger to the National Bank of Commerce in New York today for deposit.

District Court at Chadron. CHADRON, Neb., July 14.—(Special.)—District court in session this week with Judge W. H. Westover presiding.

EXPRESS RATES TO SUFFER CUTS

(Continued from First Page.)

included in a 100-pound shipment. Commissioner Lane carried his investigations into the express business of several European countries...

Of foremost importance is the requirement that all of the express companies shall join in the establishment of through routes by the quickest lines of communication between all express offices...

Roosevelt Forces Busk Making Plans

(From a Staff Correspondent.)

LINCOLN, July 14.—(Special.)—That the meeting of the state republican convention may not be harmonious is evidenced by the actions of certain "progressives"...

The name of Senator Norris Brown has been suggested by some, while others have brought out the name of Judge Field of Lincoln...

It is said that Governor Aldrich is already working upon some of the planks which he wishes put into the state platform.

Some of the more radical Roosevelt men held a meeting in the office of E. G. Magg, of the pardon board, last night to talk up plans for capturing the county convention here in Lancaster.

A Horrible Death may result from diseased lungs. Cure coughs and weak, sore lungs with Dr. King's New Discovery.

Woman Guilty of Murder. MOBILE, Ala., July 14.—Mrs. Mary T. Goday, who confessed killing her son-in-law, Policeman Fred Waiserstein, last December, asserting that he had threatened her, was found guilty by a jury today and sentenced to life imprisonment.



No more dirty water-closet bowls and no more unpleasant work keeping them clean. For Sani-Flush will quickly make them white as snow without scrubbing or touching the bowl with the hands.

Sani-Flush Cleans Water-Closet Bowls. Sani-Flush is a powdered chemical compound that dissolves in water and bubbles to foam and splash, and is used by the millions.

Save 25 cents a can at your grocer's or druggist's.

Special Triumph BEER. ASKED FOR PERFECTION.

WAR SOUVENIR COUPON. SAVE THIS COUPON IT HELPS YOU GET The Civil War Through the Camera. Ready's Famous Civil War Photographs. Published by Permission of the U. S. War Department.

WAR SOUVENIR COUPON. SAVE THIS COUPON IT HELPS YOU GET The Civil War Through the Camera. Ready's Famous Civil War Photographs. Published by Permission of the U. S. War Department.

This Coupon Good for Section 7 or for any Section Previously Issued.

BASE BALL

OMAHA vs WICHITA ROURKE PARK. July 15, 16, 17, 18. Monday, July 15, Ladies' Day. Games Called 3:30.

THE BLACK HILLS. Hot Springs, S. D., noted for its plunge baths and sanitariums... 15.75 Deadwood and Lead... 18.75

THE BIG HORN REGION. Sheridan and Rancheer, Wyo., in the beautiful Big Horn Mountains—gateways to Absaraka Park, Eaton's Ranch, Paradise Ranch, Pine Inn, Tepeck Lodge, Mountain Home Ranch, and many others... 25.75 Thermopolis Hot Springs, Owl Creek Mountains... 31.75 Cody, Wyo., east entrance to Yellowstone Park; depot for 3 Bar Ranch, W-Diamond Ranch, Morris Ranch, Pahaska Inn, Holm Lodge, etc... 32.00

THE BIG HORN REGION. Sheridan and Rancheer, Wyo., in the beautiful Big Horn Mountains—gateways to Absaraka Park, Eaton's Ranch, Paradise Ranch, Pine Inn, Tepeck Lodge, Mountain Home Ranch, and many others... 25.75 Thermopolis Hot Springs, Owl Creek Mountains... 31.75 Cody, Wyo., east entrance to Yellowstone Park; depot for 3 Bar Ranch, W-Diamond Ranch, Morris Ranch, Pahaska Inn, Holm Lodge, etc... 32.00

THE BIG HORN REGION. Sheridan and Rancheer, Wyo., in the beautiful Big Horn Mountains—gateways to Absaraka Park, Eaton's Ranch, Paradise Ranch, Pine Inn, Tepeck Lodge, Mountain Home Ranch, and many others... 25.75 Thermopolis Hot Springs, Owl Creek Mountains... 31.75 Cody, Wyo., east entrance to Yellowstone Park; depot for 3 Bar Ranch, W-Diamond Ranch, Morris Ranch, Pahaska Inn, Holm Lodge, etc... 32.00

THE BIG HORN REGION. Sheridan and Rancheer, Wyo., in the beautiful Big Horn Mountains—gateways to Absaraka Park, Eaton's Ranch, Paradise Ranch, Pine Inn, Tepeck Lodge, Mountain Home Ranch, and many others... 25.75 Thermopolis Hot Springs, Owl Creek Mountains... 31.75 Cody, Wyo., east entrance to Yellowstone Park; depot for 3 Bar Ranch, W-Diamond Ranch, Morris Ranch, Pahaska Inn, Holm Lodge, etc... 32.00

Put your Want-ad in The Bee. It will reach twice as many homes.

was called to Tenth and Pierce streets, where Neil Peyton, a negro watchman employed by the street railway company, had been overcome by the heat. He was given medical attention by Dr. Vanderhoof and taken to his home.

Walter Shippy Killed. Walter Shippy, Fourteenth and Boulevard streets, was killed last night by a fast Union Pacific express train near Waterloo.

Number thirteen and the last one of an exciting day occurred at 11 o'clock at Sixteenth and Chicago streets.

WALTER SHIPPAY IS KILLED. Struck by Express as Steps from Way of Freight.

Walter Shippy, aged 30, who lives at Fourteenth and Boulevard, was instantly killed early last night one-half mile east of Waterloo when he was struck by a fast eastbound Union Pacific express.

MAY OLSON FINALLY ENDS LIFE. Tried Repeatedly to Die and at Last is Successful.

After having made many attempts to permit suicide during the last year and a half, May Olson, Twenty-fourth and Grant, also known as May Moore and "Suldis May," died last night at St. Joseph's hospital from the effects of five bichloride of mercury tablets swallowed July 5 in the National hotel at 117 South Seventeenth street.

The girl, although only 20 years old, had been married and divorced and had been a police character for nearly two years. Her husband, a piano player at the Wick & Moore resort on Dodge street, deserted her and her child and the girl became disconsolate. Her first attempt to die was last November, when she swallowed two ounces of carbolic acid.

GETTING MORE FOOD VALUE FOR LESS MONEY. When you consider the high food value of Faust Spaghetti and the delicious dishes it makes, the cost seems ridiculously low.

ACCIDENTS ON THIRTEENTH. (Continued from First Page.) While the negro was being repaired he told Dr. Vanderhoof, who attended him, that his assailant was wanted in Kansas City for highway robbery.

Workman Sealed. When Straughter had gone Mark Ferguson, 1112 Dodge street, walked into the surgeon's office. His right arm was severed and the skin of the entire forearm was nearly taken off.

Base Ball. OMAHA vs WICHITA ROURKE PARK. July 15, 16, 17, 18. Monday, July 15, Ladies' Day. Games Called 3:30.

THE BLACK HILLS. Hot Springs, S. D., noted for its plunge baths and sanitariums... 15.75 Deadwood and Lead... 18.75

THE BIG HORN REGION. Sheridan and Rancheer, Wyo., in the beautiful Big Horn Mountains—gateways to Absaraka Park, Eaton's Ranch, Paradise Ranch, Pine Inn, Tepeck Lodge, Mountain Home Ranch, and many others... 25.75 Thermopolis Hot Springs, Owl Creek Mountains... 31.75 Cody, Wyo., east entrance to Yellowstone Park; depot for 3 Bar Ranch, W-Diamond Ranch, Morris Ranch, Pahaska Inn, Holm Lodge, etc... 32.00

THE BIG HORN REGION. Sheridan and Rancheer, Wyo., in the beautiful Big Horn Mountains—gateways to Absaraka Park, Eaton's Ranch, Paradise Ranch, Pine Inn, Tepeck Lodge, Mountain Home Ranch, and many others... 25.75 Thermopolis Hot Springs, Owl Creek Mountains... 31.75 Cody, Wyo., east entrance to Yellowstone Park; depot for 3 Bar Ranch, W-Diamond Ranch, Morris Ranch, Pahaska Inn, Holm Lodge, etc... 32.00

THE BIG HORN REGION. Sheridan and Rancheer, Wyo., in the beautiful Big Horn Mountains—gateways to Absaraka Park, Eaton's Ranch, Paradise Ranch, Pine Inn, Tepeck Lodge, Mountain Home Ranch, and many others... 25.75 Thermopolis Hot Springs, Owl Creek Mountains... 31.75 Cody, Wyo., east entrance to Yellowstone Park; depot for 3 Bar Ranch, W-Diamond Ranch, Morris Ranch, Pahaska Inn, Holm Lodge, etc... 32.00

THE BIG HORN REGION. Sheridan and Rancheer, Wyo., in the beautiful Big Horn Mountains—gateways to Absaraka Park, Eaton's Ranch, Paradise Ranch, Pine Inn, Tepeck Lodge, Mountain Home Ranch, and many others... 25.75 Thermopolis Hot Springs, Owl Creek Mountains... 31.75 Cody, Wyo., east entrance to Yellowstone Park; depot for 3 Bar Ranch, W-Diamond Ranch, Morris Ranch, Pahaska Inn, Holm Lodge, etc... 32.00

THE BIG HORN REGION. Sheridan and Rancheer, Wyo., in the beautiful Big Horn Mountains—gateways to Absaraka Park, Eaton's Ranch, Paradise Ranch, Pine Inn, Tepeck Lodge, Mountain Home Ranch, and many others... 25.75 Thermopolis Hot Springs, Owl Creek Mountains... 31.75 Cody, Wyo., east entrance to Yellowstone Park; depot for 3 Bar Ranch, W-Diamond Ranch, Morris Ranch, Pahaska Inn, Holm Lodge, etc... 32.00

THE BIG HORN REGION. Sheridan and Rancheer, Wyo., in the beautiful Big Horn Mountains—gateways to Absaraka Park, Eaton's Ranch, Paradise Ranch, Pine Inn, Tepeck Lodge, Mountain Home Ranch, and many others... 25.75 Thermopolis Hot Springs, Owl Creek Mountains... 31.75 Cody, Wyo., east entrance to Yellowstone Park; depot for 3 Bar Ranch, W-Diamond Ranch, Morris Ranch, Pahaska Inn, Holm Lodge, etc... 32.00

THE BIG HORN REGION. Sheridan and Rancheer, Wyo., in the beautiful Big Horn Mountains—gateways to Absaraka Park, Eaton's Ranch, Paradise Ranch, Pine Inn, Tepeck Lodge, Mountain Home Ranch, and many others... 25.75 Thermopolis Hot Springs, Owl Creek Mountains... 31.75 Cody, Wyo., east entrance to Yellowstone Park; depot for 3 Bar Ranch, W-Diamond Ranch, Morris Ranch, Pahaska Inn, Holm Lodge, etc... 32.00

THE BIG HORN REGION. Sheridan and Rancheer, Wyo., in the beautiful Big Horn Mountains—gateways to Absaraka Park, Eaton's Ranch, Paradise Ranch, Pine Inn, Tepeck Lodge, Mountain Home Ranch, and many others... 25.75 Thermopolis Hot Springs, Owl Creek Mountains... 31.75 Cody, Wyo., east entrance to Yellowstone Park; depot for 3 Bar Ranch, W-Diamond Ranch, Morris Ranch, Pahaska Inn, Holm Lodge, etc... 32.00

THE BIG HORN REGION. Sheridan and Rancheer, Wyo., in the beautiful Big Horn Mountains—gateways to Absaraka Park, Eaton's Ranch, Paradise Ranch, Pine Inn, Tepeck Lodge, Mountain Home Ranch, and many others... 25.75 Thermopolis Hot Springs, Owl Creek Mountains... 31.75 Cody, Wyo., east entrance to Yellowstone Park; depot for 3 Bar Ranch, W-Diamond Ranch, Morris Ranch, Pahaska Inn, Holm Lodge, etc... 32.00

THE BIG HORN REGION. Sheridan and Rancheer, Wyo., in the beautiful Big Horn Mountains—gateways to Absaraka Park, Eaton's Ranch, Paradise Ranch, Pine Inn, Tepeck Lodge, Mountain Home Ranch, and many others... 25.75 Thermopolis Hot Springs, Owl Creek Mountains... 31.75 Cody, Wyo., east entrance to Yellowstone Park; depot for 3 Bar Ranch, W-Diamond Ranch, Morris Ranch, Pahaska Inn, Holm Lodge, etc... 32.00

was called to Tenth and Pierce streets, where Neil Peyton, a negro watchman employed by the street railway company, had been overcome by the heat. He was given medical attention by Dr. Vanderhoof and taken to his home.

Walter Shippy Killed. Walter Shippy, Fourteenth and Boulevard streets, was killed last night by a fast Union Pacific express train near Waterloo.

Number thirteen and the last one of an exciting day occurred at 11 o'clock at Sixteenth and Chicago streets.

WALTER SHIPPAY IS KILLED. Struck by Express as Steps from Way of Freight.

Walter Shippy, aged 30, who lives at Fourteenth and Boulevard, was instantly killed early last night one-half mile east of Waterloo when he was struck by a fast eastbound Union Pacific express.

MAY OLSON FINALLY ENDS LIFE. Tried Repeatedly to Die and at Last is Successful.

After having made many attempts to permit suicide during the last year and a half, May Olson, Twenty-fourth and Grant, also known as May Moore and "Suldis May," died last night at St. Joseph's hospital from the effects of five bichloride of mercury tablets swallowed July 5 in the National hotel at 117 South Seventeenth street.

The girl, although only 20 years old, had been married and divorced and had been a police character for nearly two years. Her husband, a piano player at the Wick & Moore resort on Dodge street, deserted her and her child and the girl became disconsolate. Her first attempt to die was last November, when she swallowed two ounces of carbolic acid.

GETTING MORE FOOD VALUE FOR LESS MONEY. When you consider the high food value of Faust Spaghetti and the delicious dishes it makes, the cost seems ridiculously low.

ACCIDENTS ON THIRTEENTH. (Continued from First Page.) While the negro was being repaired he told Dr. Vanderhoof, who attended him, that his assailant was wanted in Kansas City for highway robbery.

Workman Sealed. When Straughter had gone Mark Ferguson, 1112 Dodge street, walked into the surgeon's office. His right arm was severed and the skin of the entire forearm was nearly taken off.

Base Ball. OMAHA vs WICHITA ROURKE PARK. July 15, 16, 17, 18. Monday, July 15, Ladies' Day. Games Called 3:30.

THE BLACK HILLS. Hot Springs, S. D., noted for its plunge baths and sanitariums... 15.75 Deadwood and Lead... 18.75

THE BIG HORN REGION. Sheridan and Rancheer, Wyo., in the beautiful Big Horn Mountains—gateways to Absaraka Park, Eaton's Ranch, Paradise Ranch, Pine Inn, Tepeck Lodge, Mountain Home Ranch, and many others... 25.75 Thermopolis Hot Springs, Owl Creek Mountains... 31.75 Cody, Wyo., east entrance to Yellowstone Park; depot for 3 Bar Ranch, W-Diamond Ranch, Morris Ranch, Pahaska Inn, Holm Lodge, etc... 32.00

THE BIG HORN REGION. Sheridan and Rancheer, Wyo., in the beautiful Big Horn Mountains—gateways to Absaraka Park, Eaton's Ranch, Paradise Ranch, Pine Inn, Tepeck Lodge, Mountain Home Ranch, and many others... 25.75 Thermopolis Hot Springs, Owl Creek Mountains... 31.75 Cody, Wyo., east entrance to Yellowstone Park; depot for 3 Bar Ranch, W-Diamond Ranch, Morris Ranch, Pahaska Inn, Holm Lodge, etc... 32.00

THE BIG HORN REGION. Sheridan and Rancheer, Wyo., in the beautiful Big Horn Mountains—gateways to Absaraka Park, Eaton's Ranch, Paradise Ranch, Pine Inn, Tepeck Lodge, Mountain Home Ranch, and many others... 25.75 Thermopolis Hot Springs, Owl Creek Mountains... 31.75 Cody, Wyo., east entrance to Yellowstone Park; depot for 3 Bar Ranch, W-Diamond Ranch, Morris Ranch, Pahaska Inn, Holm Lodge, etc... 32.00

THE BIG HORN REGION. Sheridan and Rancheer, Wyo., in the beautiful Big Horn Mountains—gateways to Absaraka Park, Eaton's Ranch, Paradise Ranch, Pine Inn, Tepeck Lodge, Mountain Home Ranch, and many others... 25.75 Thermopolis Hot Springs, Owl Creek Mountains... 31.75 Cody, Wyo., east entrance to Yellowstone Park; depot for 3 Bar Ranch, W-Diamond Ranch, Morris Ranch, Pahaska Inn, Holm Lodge, etc... 32.00

THE BIG HORN REGION. Sheridan and Rancheer, Wyo., in the beautiful Big Horn Mountains—gateways to Absaraka Park, Eaton's Ranch, Paradise Ranch, Pine Inn, Tepeck Lodge, Mountain Home Ranch, and many others... 25.75 Thermopolis Hot Springs, Owl Creek Mountains... 31.75 Cody, Wyo., east entrance to Yellowstone Park; depot for 3 Bar Ranch, W-Diamond Ranch, Morris Ranch, Pahaska Inn, Holm Lodge, etc... 32.00

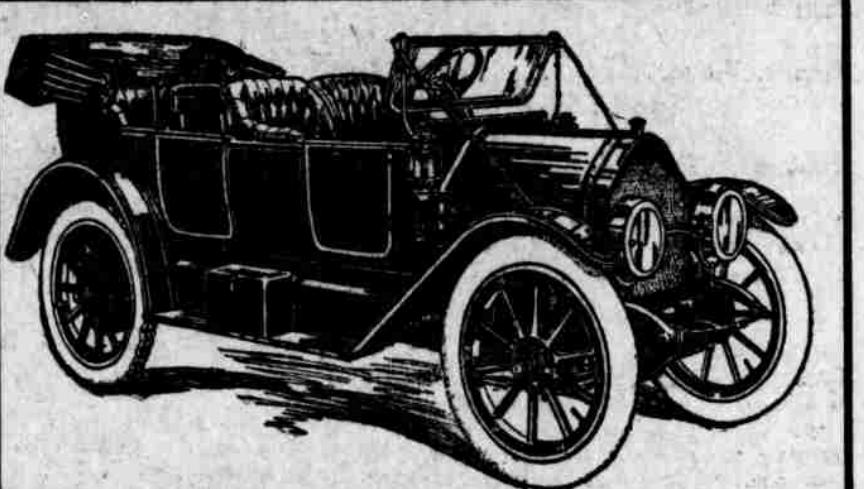
THE BIG HORN REGION. Sheridan and Rancheer, Wyo., in the beautiful Big Horn Mountains—gateways to Absaraka Park, Eaton's Ranch, Paradise Ranch, Pine Inn, Tepeck Lodge, Mountain Home Ranch, and many others... 25.75 Thermopolis Hot Springs, Owl Creek Mountains... 31.75 Cody, Wyo., east entrance to Yellowstone Park; depot for 3 Bar Ranch, W-Diamond Ranch, Morris Ranch, Pahaska Inn, Holm Lodge, etc... 32.00

THE BIG HORN REGION. Sheridan and Rancheer, Wyo., in the beautiful Big Horn Mountains—gateways to Absaraka Park, Eaton's Ranch, Paradise Ranch, Pine Inn, Tepeck Lodge, Mountain Home Ranch, and many others... 25.75 Thermopolis Hot Springs, Owl Creek Mountains... 31.75 Cody, Wyo., east entrance to Yellowstone Park; depot for 3 Bar Ranch, W-Diamond Ranch, Morris Ranch, Pahaska Inn, Holm Lodge, etc... 32.00

THE BIG HORN REGION. Sheridan and Rancheer, Wyo., in the beautiful Big Horn Mountains—gateways to Absaraka Park, Eaton's Ranch, Paradise Ranch, Pine Inn, Tepeck Lodge, Mountain Home Ranch, and many others... 25.75 Thermopolis Hot Springs, Owl Creek Mountains... 31.75 Cody, Wyo., east entrance to Yellowstone Park; depot for 3 Bar Ranch, W-Diamond Ranch, Morris Ranch, Pahaska Inn, Holm Lodge, etc... 32.00

THE BIG HORN REGION. Sheridan and Rancheer, Wyo., in the beautiful Big Horn Mountains—gateways to Absaraka Park, Eaton's Ranch, Paradise Ranch, Pine Inn, Tepeck Lodge, Mountain Home Ranch, and many others... 25.75 Thermopolis Hot Springs, Owl Creek Mountains... 31.75 Cody, Wyo., east entrance to Yellowstone Park; depot for 3 Bar Ranch, W-Diamond Ranch, Morris Ranch, Pahaska Inn, Holm Lodge, etc... 32.00

THE BIG HORN REGION. Sheridan and Rancheer, Wyo., in the beautiful Big Horn Mountains—gateways to Absaraka Park, Eaton's Ranch, Paradise Ranch, Pine Inn, Tepeck Lodge, Mountain Home Ranch, and many others... 25.75 Thermopolis Hot Springs, Owl Creek Mountains... 31.75 Cody, Wyo., east entrance to Yellowstone Park; depot for 3 Bar Ranch, W-Diamond Ranch, Morris Ranch, Pahaska Inn, Holm Lodge, etc... 32.00



Model 68-D—7-Passenger Touring Car. No Matter How Large Our Profit on the sale of the Firestone COLUMBUS Gas Cars. We could not possibly afford to make our exceptional offer of A Year's Free Service in adjustments, etc., except for our inside knowledge of this exceptional car.

The 7-Passenger Touring Car, Model 68-D, shown above, is typical of the line—a unit of gas car stability and dependability—resulting from a combination of the best obtainable engineering and mechanical skill. This car has left hand steer and center control and is equipped with self starter, magneto, Solar headlights, Prest-O-lite tank, combination electric and oil side and rear lamps, with storage battery, special ventilating windshield, speedometer, horn, top, robe rail, foot rail, tire irons, license holder brackets, tools, tire repair outfit, extra demountable rim and japanned Prest-O-lite tank casing. Made by the Columbus Buggy Co., Columbus, Ohio. W. N. Hellen Motor Car Co. 2418-18 Farnam St., OMAHA. Distributor for Nebraska and Western Iowa. Agents write for territory. No deposit money required.

Vacation Tours Through the West

PACIFIC COAST. San Francisco, Los Angeles, Portland, Seattle, daily... \$60.00. YELLOWSTONE PARK. To Gardiner, Cody or Yellowstone... \$22.00. THE BLACK HILLS. Hot Springs, S. D., noted for its plunge baths and sanitariums... 15.75. THE BIG HORN REGION. Sheridan and Rancheer, Wyo., in the beautiful Big Horn Mountains... 25.75.

Standard Sleepers, Omaha to Gardiner. ROCKY MOUNTAIN TOURS. Through Glacier National Park, the newly revealed wonderland, from Benton on Midvale, Mont... 35.00.

THE BIG HORN REGION. Sheridan and Rancheer, Wyo., in the beautiful Big Horn Mountains—gateways to Absaraka Park, Eaton's Ranch, Paradise Ranch, Pine Inn, Tepeck Lodge, Mountain Home Ranch, and many others... 25.75.

Put your Want-ad in The Bee. It will reach twice as many homes.