

FOR RENT—STORES AND OFFICES.

FOR RENT IN THE BEER BUILDING... One large corner room, 24 floor, with vault...

WANTED—SITUATIONS.

A MIDDLE-AGED WOMAN WOULD LIKE to take a place as housekeeper of good second work...

WANTED—MALE HELP.

CANVASSERS TO TAKE ORDERS: NEW LINE of heavy goods to carry, salary or commission...

WANTED—FEMALE HELP.

10 GIRLS FOR ALL KINDS OF WORK; \$3 to \$7 weekly... Canadian Office, 142 DuSable St., Chicago...

FOR RENT—HOUSES.

HOUSES, WALACE, BROWN BLOCK, 26th and Douglas... MOVING HOUSEHOLD GOODS AND PIANOS...

FOR RENT—FURNISHED ROOMS.

FURNISHED ROOMS; HOUSEKEEPING, 112 S. 17th St., 4th floor... HOUSES, BENEWA & CO., 103 N. 17th St.

FOR RENT—FURNISHED ROOMS.

BEAUTIFUL MODERN FRONT ROOMS, BAY window, housekeeping, 514 N. 19th St... NEWLY FURNISHED FRONT ROOM; Private family, 1811 California St.

FURNISHED ROOMS AND BOARD.

THE MERRIAM, FIRST CLASS FAMILY HOME, 24th and Dodge Sts... NEWLY FURNISHED ROOMS, WITH BOARD, hot water heat, 2424 Cass street...

THE CAPITOL.

THE CAPITOL, 1222 CAPITOL AVE—DESIRABLE south rooms; transients accommodated... NICELY FURNISHED FRONT ROOM, Modern conveniences, private family, 102 S. 20th St.

FOR RENT—HOTEL.

FOR RENT, BECK STORE ROOM, 602 S. 4th St... THE OLDEST LARGEST AND ONLY INCORPORATED LOAN COMPANY IN OMAHA.

BUSINESS CHANCES.

TO GET IN OR OUT OF BUSINESS GO TO J. J. Gibson, 514 First Nat'l Bank... FOR RENT, BECK STORE ROOM, 602 S. 4th St.

FOR RENT—HOTEL.

FOR RENT, BECK STORE ROOM, 602 S. 4th St... THE OLDEST LARGEST AND ONLY INCORPORATED LOAN COMPANY IN OMAHA.

BUSINESS CHANCES.

TO GET IN OR OUT OF BUSINESS GO TO J. J. Gibson, 514 First Nat'l Bank... FOR RENT, BECK STORE ROOM, 602 S. 4th St.

BUSINESS CHANCES.

A GOOD OPENING FOR A SMALL BANK... GREAT BARGAINS—CLEAR STORES AND OFFICES... FOR RENT, BECK STORE ROOM, 602 S. 4th St.

FOR RENT—HOTEL.

FOR RENT, BECK STORE ROOM, 602 S. 4th St... THE OLDEST LARGEST AND ONLY INCORPORATED LOAN COMPANY IN OMAHA.

BUSINESS CHANCES.

TO GET IN OR OUT OF BUSINESS GO TO J. J. Gibson, 514 First Nat'l Bank... FOR RENT, BECK STORE ROOM, 602 S. 4th St.

FOR RENT—HOTEL.

FOR RENT, BECK STORE ROOM, 602 S. 4th St... THE OLDEST LARGEST AND ONLY INCORPORATED LOAN COMPANY IN OMAHA.

BUSINESS CHANCES.

TO GET IN OR OUT OF BUSINESS GO TO J. J. Gibson, 514 First Nat'l Bank... FOR RENT, BECK STORE ROOM, 602 S. 4th St.

NOTICE OF STOCKHOLDERS' MEETING.

STOCKHOLDERS' MEETING... NOTICE OF STOCKHOLDERS' MEETING... The annual meeting of the Union Land Company...

GOVERNMENT NOTICES.

TREASURY DEPARTMENT OFFICE... Notice of the annual meeting of the Union Land Company...

NOTICE TO CONTRACTORS.

Sealed bids for the construction of the Central Postoffice building...

POSTOFFICE NOTICE.

(Should be read DAILY by all interested, as changes may occur at any time.)

TRANS-ATLANTIC MAILS.

TUESDAY—At 8 a. m. for GENOVA, per s. s. Normannia...

TRANS-ATLANTIC MAILS.

TUESDAY—At 8 a. m. for GENOVA, per s. s. Normannia...

TRANS-ATLANTIC MAILS.

TUESDAY—At 8 a. m. for GENOVA, per s. s. Normannia...

TRANS-ATLANTIC MAILS.

TUESDAY—At 8 a. m. for GENOVA, per s. s. Normannia...

TRANS-ATLANTIC MAILS.

TUESDAY—At 8 a. m. for GENOVA, per s. s. Normannia...

TRANS-ATLANTIC MAILS.

TUESDAY—At 8 a. m. for GENOVA, per s. s. Normannia...

TRANS-ATLANTIC MAILS.

TUESDAY—At 8 a. m. for GENOVA, per s. s. Normannia...

TRANS-ATLANTIC MAILS.

TUESDAY—At 8 a. m. for GENOVA, per s. s. Normannia...

TRANS-ATLANTIC MAILS.

TUESDAY—At 8 a. m. for GENOVA, per s. s. Normannia...

TRANS-ATLANTIC MAILS.

TUESDAY—At 8 a. m. for GENOVA, per s. s. Normannia...

TRANS-ATLANTIC MAILS.

TUESDAY—At 8 a. m. for GENOVA, per s. s. Normannia...

TRANS-ATLANTIC MAILS.

TUESDAY—At 8 a. m. for GENOVA, per s. s. Normannia...

TRANS-ATLANTIC MAILS.

TUESDAY—At 8 a. m. for GENOVA, per s. s. Normannia...

RAILROADS.

UNION PACIFIC—THE OVERLAND... DENVER AND NORTHWESTERN... CHICAGO, MILWAUKEE & ST. LOUIS...

RAILROADS.

UNION PACIFIC—THE OVERLAND... DENVER AND NORTHWESTERN... CHICAGO, MILWAUKEE & ST. LOUIS...

RAILROADS.

UNION PACIFIC—THE OVERLAND... DENVER AND NORTHWESTERN... CHICAGO, MILWAUKEE & ST. LOUIS...

RAILROADS.

UNION PACIFIC—THE OVERLAND... DENVER AND NORTHWESTERN... CHICAGO, MILWAUKEE & ST. LOUIS...

RAILROADS.

UNION PACIFIC—THE OVERLAND... DENVER AND NORTHWESTERN... CHICAGO, MILWAUKEE & ST. LOUIS...

RAILROADS.

UNION PACIFIC—THE OVERLAND... DENVER AND NORTHWESTERN... CHICAGO, MILWAUKEE & ST. LOUIS...

RAILROADS.

UNION PACIFIC—THE OVERLAND... DENVER AND NORTHWESTERN... CHICAGO, MILWAUKEE & ST. LOUIS...

RAILROADS.

UNION PACIFIC—THE OVERLAND... DENVER AND NORTHWESTERN... CHICAGO, MILWAUKEE & ST. LOUIS...

RAILROADS.

UNION PACIFIC—THE OVERLAND... DENVER AND NORTHWESTERN... CHICAGO, MILWAUKEE & ST. LOUIS...

RAILROADS.

UNION PACIFIC—THE OVERLAND... DENVER AND NORTHWESTERN... CHICAGO, MILWAUKEE & ST. LOUIS...

RAILROADS.

UNION PACIFIC—THE OVERLAND... DENVER AND NORTHWESTERN... CHICAGO, MILWAUKEE & ST. LOUIS...

RAILROADS.

UNION PACIFIC—THE OVERLAND... DENVER AND NORTHWESTERN... CHICAGO, MILWAUKEE & ST. LOUIS...

RAILROADS.

UNION PACIFIC—THE OVERLAND... DENVER AND NORTHWESTERN... CHICAGO, MILWAUKEE & ST. LOUIS...

RAILROADS.

UNION PACIFIC—THE OVERLAND... DENVER AND NORTHWESTERN... CHICAGO, MILWAUKEE & ST. LOUIS...

RAILROADS.

UNION PACIFIC—THE OVERLAND... DENVER AND NORTHWESTERN... CHICAGO, MILWAUKEE & ST. LOUIS...

RAILROADS.

UNION PACIFIC—THE OVERLAND... DENVER AND NORTHWESTERN... CHICAGO, MILWAUKEE & ST. LOUIS...

RAILROADS.

UNION PACIFIC—THE OVERLAND... DENVER AND NORTHWESTERN... CHICAGO, MILWAUKEE & ST. LOUIS...

RAILROADS.

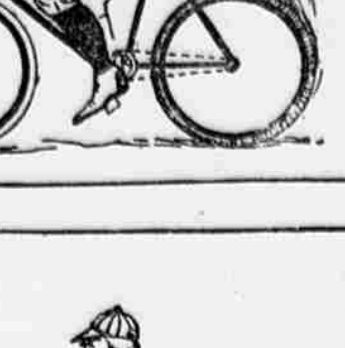
UNION PACIFIC—THE OVERLAND... DENVER AND NORTHWESTERN... CHICAGO, MILWAUKEE & ST. LOUIS...

EVOLUTION OF A CYCLIST.

The Big Lion, Major, was either too dignified or too lazy to pay more than passing attention to the game...



Mrs. Mary Bird, Harrisburg, Pa., says: "My child is worth millions to me; yet it would have cost her by cross-hatched...



Power and Speed of Engines Increased Many Times by Inventions... Sixty years ago wrought iron and steel were the principal metals...



The number of breakdowns is surprisingly few. By this greater strength the weight of engines has been reduced...



As a result of increased steam pressures superior metals and improved tools, the weight of machinery is only...



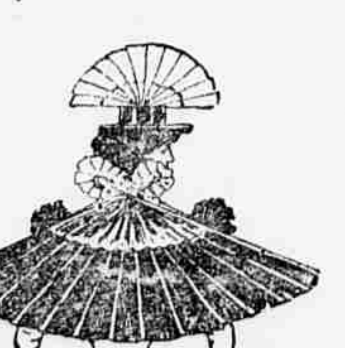
The locomotive of 1837 was only about fifteen to nineteen feet long...



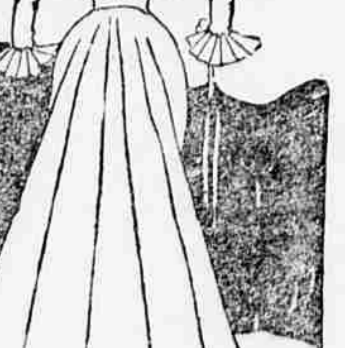
Today's steamers are built of the same steel, which carries a load of nearly 75 per cent more...



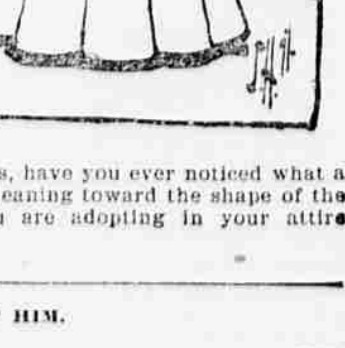
In other lines of machinery the same progress has been seen...



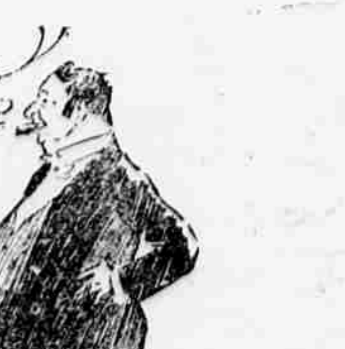
When steam power has been brought to the highest point of perfection...



Take our more familiar pin. A few years ago the manufacture of pins...



Ladies, have you ever noticed what a flat face you are adopting in your attire now?



Me Henpeck—Who was his first husband. Miss Brown—Who was his first husband. Me Henpeck—My wife's first husband.

