

BROKERS DOING FINE WORK

Practicing a Trick on the Coast that May Lead to Serious Trouble.

REAP A HARVEST BY SCALPING TICKETS

Unless Chairman Caldwell Throws Himself into the Breach and Calls a Halt, Railroad Men Predict a War on Passenger Rates.

Press telegrams have indicated that the Santa Fe has cut the rate from Los Angeles to eastern points on account of the manipulation of tickets by scalpers.

It now appears that brokers in the Pacific coast metropolis are selling tickets to Chicago and cutting Chicago rates \$5, by manipulating tickets via Kansas City to Omaha.

These tickets are openly on sale in San Francisco by the Southern Pacific, notwithstanding the protestations of lines vitally interested in California business.

The trouble seems to be in keeping on sale tickets of this kind via the long routes, and some of the lines have not been called to order.

A representative of the Burlington stated that his company was ready to go out of this business just as soon as the Union Pacific showed a disposition to play fair.

By reason of this manipulation the passenger is enabled to get to Chicago for \$5, whereas the regular rate is \$12.50.

Unless material changes occur in the situation of the Western Trunk Line committee, called for today in Chicago, promises to be a monkey and parrot.

On March 1 the Chicago city passenger and ticket office of the Chicago, Milwaukee & St. Paul railway will be removed to the new Marquette building.

On March 1 the Chicago city passenger and ticket office of the Chicago, Milwaukee & St. Paul railway will be removed to the new Marquette building.

On March 1 the Chicago city passenger and ticket office of the Chicago, Milwaukee & St. Paul railway will be removed to the new Marquette building.

On March 1 the Chicago city passenger and ticket office of the Chicago, Milwaukee & St. Paul railway will be removed to the new Marquette building.

On March 1 the Chicago city passenger and ticket office of the Chicago, Milwaukee & St. Paul railway will be removed to the new Marquette building.

On March 1 the Chicago city passenger and ticket office of the Chicago, Milwaukee & St. Paul railway will be removed to the new Marquette building.

On March 1 the Chicago city passenger and ticket office of the Chicago, Milwaukee & St. Paul railway will be removed to the new Marquette building.

On March 1 the Chicago city passenger and ticket office of the Chicago, Milwaukee & St. Paul railway will be removed to the new Marquette building.

On March 1 the Chicago city passenger and ticket office of the Chicago, Milwaukee & St. Paul railway will be removed to the new Marquette building.

On March 1 the Chicago city passenger and ticket office of the Chicago, Milwaukee & St. Paul railway will be removed to the new Marquette building.

On March 1 the Chicago city passenger and ticket office of the Chicago, Milwaukee & St. Paul railway will be removed to the new Marquette building.

On March 1 the Chicago city passenger and ticket office of the Chicago, Milwaukee & St. Paul railway will be removed to the new Marquette building.

On March 1 the Chicago city passenger and ticket office of the Chicago, Milwaukee & St. Paul railway will be removed to the new Marquette building.

On March 1 the Chicago city passenger and ticket office of the Chicago, Milwaukee & St. Paul railway will be removed to the new Marquette building.

On March 1 the Chicago city passenger and ticket office of the Chicago, Milwaukee & St. Paul railway will be removed to the new Marquette building.

On March 1 the Chicago city passenger and ticket office of the Chicago, Milwaukee & St. Paul railway will be removed to the new Marquette building.

On March 1 the Chicago city passenger and ticket office of the Chicago, Milwaukee & St. Paul railway will be removed to the new Marquette building.

On March 1 the Chicago city passenger and ticket office of the Chicago, Milwaukee & St. Paul railway will be removed to the new Marquette building.

On March 1 the Chicago city passenger and ticket office of the Chicago, Milwaukee & St. Paul railway will be removed to the new Marquette building.

On March 1 the Chicago city passenger and ticket office of the Chicago, Milwaukee & St. Paul railway will be removed to the new Marquette building.

On March 1 the Chicago city passenger and ticket office of the Chicago, Milwaukee & St. Paul railway will be removed to the new Marquette building.

On March 1 the Chicago city passenger and ticket office of the Chicago, Milwaukee & St. Paul railway will be removed to the new Marquette building.

Mattinee for ladies and children at 2:30, and the evening performance at 8:15.

The usual matinee scale of 25 cents for any seat in the house will be in force.

IN THE DISTRICT COURT.

Another Packing House Strike Assault Case on Trial—Other Matters.

The jury in the case of Charles Neff, who is charged with assault with intent to kill John Peterson, was empaneled yesterday in Judge Scott's court.

Peterson was an employe of Swift's packing house during the cooper's strike last fall. On September 17 he was at the Seventeenth street station, awaiting the departure of the Union Pacific workmen's train.

The defense will rely entirely upon proving an alibi. They will attempt to prove that Neff was at the time of the assault in Omaha, was at breakfast twenty minutes before the assault on Peterson took place, and that he was not in the vicinity of the packing house at that time.

Peterson was called to the stand shortly before noon and gave his version of the assault. The jury heard the testimony and returned a verdict in favor of the plaintiff.

The jury in the case of John Morray against Mrs. M. J. Mann brought in a verdict for the plaintiff for \$132.25 and costs in Judge Keyser's court yesterday.

The case was an appeal from the justice's court. John Morray had been working at the instance of the defendant in the old Elk River Valley house amounting to \$205.74, of which "Bird's" could only be induced to pay \$50 and was sued for the balance.

In her answer the defendant set up the plea that she was, at the time this work was done, a woman of the town, and that Morray knew it. Therefore, she did not work for her, and she was not liable for the work he was doing and she was not entitled to any payment whatever.

The demurrer filed states that the complaint involves questions which are not common to all of the defendants, and that contrary questions are involved.

On February 5 and 12, March 5, April 2 and 30. For rates or further information call at the New Wabash office.

On February 5 and 12, March 5, April 2 and 30. For rates or further information call at the New Wabash office.

On February 5 and 12, March 5, April 2 and 30. For rates or further information call at the New Wabash office.

On February 5 and 12, March 5, April 2 and 30. For rates or further information call at the New Wabash office.

On February 5 and 12, March 5, April 2 and 30. For rates or further information call at the New Wabash office.

On February 5 and 12, March 5, April 2 and 30. For rates or further information call at the New Wabash office.

On February 5 and 12, March 5, April 2 and 30. For rates or further information call at the New Wabash office.

On February 5 and 12, March 5, April 2 and 30. For rates or further information call at the New Wabash office.

On February 5 and 12, March 5, April 2 and 30. For rates or further information call at the New Wabash office.

On February 5 and 12, March 5, April 2 and 30. For rates or further information call at the New Wabash office.

On February 5 and 12, March 5, April 2 and 30. For rates or further information call at the New Wabash office.

On February 5 and 12, March 5, April 2 and 30. For rates or further information call at the New Wabash office.

On February 5 and 12, March 5, April 2 and 30. For rates or further information call at the New Wabash office.

On February 5 and 12, March 5, April 2 and 30. For rates or further information call at the New Wabash office.

On February 5 and 12, March 5, April 2 and 30. For rates or further information call at the New Wabash office.

On February 5 and 12, March 5, April 2 and 30. For rates or further information call at the New Wabash office.

On February 5 and 12, March 5, April 2 and 30. For rates or further information call at the New Wabash office.

On February 5 and 12, March 5, April 2 and 30. For rates or further information call at the New Wabash office.

On February 5 and 12, March 5, April 2 and 30. For rates or further information call at the New Wabash office.

On February 5 and 12, March 5, April 2 and 30. For rates or further information call at the New Wabash office.

On February 5 and 12, March 5, April 2 and 30. For rates or further information call at the New Wabash office.

HAYDEN BROS.

Last and Greatest Out on H. M. Cook's Heavy and Medium Weight Clothing.

SPECIAL SILK BARGAIN TOMORROW

Wednesday and Thursday We Offer Two Very Special Bargains in Children's Suits from the Cook stock—Prices Pushed Away Down.

All of the M. H. Cook's children's knee pants suits, all ages, 4 to 15, Cook's \$4.00 to \$3.00 now, go at \$1.95 and \$2.75.

Men's fine all wool trousers, in all the newest patterns and styles. We still have the largest stock of any house in the west. They must be moved this week if there is a price that will move them.

Printed China silks, small designs, 22 inches wide, 15c. Plain India silks, all colors, 22 inches wide, 15c.

Silks in all colors, other houses say they are worth 50c per yard, our price on them is only 15c.

Genuine natural pongee, 20 inches wide, 15c. Striped Japanese wash silks, 20 inches wide, 15c.

Silk finish velveteens, in a number of good colors, 15c. Silk plushes, in bright and dark colors, 15c.

Changeable glass silks, 20 inches wide, 25c. Cable cord wash silks, in stripes and checks, 35c.

Pancy silk crepes, all colors, only 25c. Scotch plaid silks, new styles, only 40c.

On February 5 and 12, March 5, April 2 and 30. For rates or further information call at the New Wabash office.

On February 5 and 12, March 5, April 2 and 30. For rates or further information call at the New Wabash office.

On February 5 and 12, March 5, April 2 and 30. For rates or further information call at the New Wabash office.

On February 5 and 12, March 5, April 2 and 30. For rates or further information call at the New Wabash office.

On February 5 and 12, March 5, April 2 and 30. For rates or further information call at the New Wabash office.

On February 5 and 12, March 5, April 2 and 30. For rates or further information call at the New Wabash office.

On February 5 and 12, March 5, April 2 and 30. For rates or further information call at the New Wabash office.

On February 5 and 12, March 5, April 2 and 30. For rates or further information call at the New Wabash office.

On February 5 and 12, March 5, April 2 and 30. For rates or further information call at the New Wabash office.

On February 5 and 12, March 5, April 2 and 30. For rates or further information call at the New Wabash office.

On February 5 and 12, March 5, April 2 and 30. For rates or further information call at the New Wabash office.

On February 5 and 12, March 5, April 2 and 30. For rates or further information call at the New Wabash office.

On February 5 and 12, March 5, April 2 and 30. For rates or further information call at the New Wabash office.

On February 5 and 12, March 5, April 2 and 30. For rates or further information call at the New Wabash office.

On February 5 and 12, March 5, April 2 and 30. For rates or further information call at the New Wabash office.

On February 5 and 12, March 5, April 2 and 30. For rates or further information call at the New Wabash office.

On February 5 and 12, March 5, April 2 and 30. For rates or further information call at the New Wabash office.

On February 5 and 12, March 5, April 2 and 30. For rates or further information call at the New Wabash office.

On February 5 and 12, March 5, April 2 and 30. For rates or further information call at the New Wabash office.

On February 5 and 12, March 5, April 2 and 30. For rates or further information call at the New Wabash office.

On February 5 and 12, March 5, April 2 and 30. For rates or further information call at the New Wabash office.

GREAT BARNBURY SHOE SALE.

And will sell them awfully cheap.

PHILLIPS "ROCK ISLAND" EXCURSION

Through Tourist Sleeping Car to San Francisco and Los Angeles.

Via Chicago, Rock Island & Pacific railway, leaves Omaha every Friday at 1:10 p. m.

Through Tourist Sleeping Car to San Francisco and Los Angeles. Via Chicago, Rock Island & Pacific railway, leaves Omaha every Friday at 1:10 p. m.

Through Tourist Sleeping Car to San Francisco and Los Angeles. Via Chicago, Rock Island & Pacific railway, leaves Omaha every Friday at 1:10 p. m.

Through Tourist Sleeping Car to San Francisco and Los Angeles. Via Chicago, Rock Island & Pacific railway, leaves Omaha every Friday at 1:10 p. m.

Through Tourist Sleeping Car to San Francisco and Los Angeles. Via Chicago, Rock Island & Pacific railway, leaves Omaha every Friday at 1:10 p. m.

Through Tourist Sleeping Car to San Francisco and Los Angeles. Via Chicago, Rock Island & Pacific railway, leaves Omaha every Friday at 1:10 p. m.

Through Tourist Sleeping Car to San Francisco and Los Angeles. Via Chicago, Rock Island & Pacific railway, leaves Omaha every Friday at 1:10 p. m.

Through Tourist Sleeping Car to San Francisco and Los Angeles. Via Chicago, Rock Island & Pacific railway, leaves Omaha every Friday at 1:10 p. m.

Through Tourist Sleeping Car to San Francisco and Los Angeles. Via Chicago, Rock Island & Pacific railway, leaves Omaha every Friday at 1:10 p. m.

Through Tourist Sleeping Car to San Francisco and Los Angeles. Via Chicago, Rock Island & Pacific railway, leaves Omaha every Friday at 1:10 p. m.

Through Tourist Sleeping Car to San Francisco and Los Angeles. Via Chicago, Rock Island & Pacific railway, leaves Omaha every Friday at 1:10 p. m.

Through Tourist Sleeping Car to San Francisco and Los Angeles. Via Chicago, Rock Island & Pacific railway, leaves Omaha every Friday at 1:10 p. m.

Through Tourist Sleeping Car to San Francisco and Los Angeles. Via Chicago, Rock Island & Pacific railway, leaves Omaha every Friday at 1:10 p. m.

Through Tourist Sleeping Car to San Francisco and Los Angeles. Via Chicago, Rock Island & Pacific railway, leaves Omaha every Friday at 1:10 p. m.

Through Tourist Sleeping Car to San Francisco and Los Angeles. Via Chicago, Rock Island & Pacific railway, leaves Omaha every Friday at 1:10 p. m.

Through Tourist Sleeping Car to San Francisco and Los Angeles. Via Chicago, Rock Island & Pacific railway, leaves Omaha every Friday at 1:10 p. m.

Through Tourist Sleeping Car to San Francisco and Los Angeles. Via Chicago, Rock Island & Pacific railway, leaves Omaha every Friday at 1:10 p. m.

Through Tourist Sleeping Car to San Francisco and Los Angeles. Via Chicago, Rock Island & Pacific railway, leaves Omaha every Friday at 1:10 p. m.

Through Tourist Sleeping Car to San Francisco and Los Angeles. Via Chicago, Rock Island & Pacific railway, leaves Omaha every Friday at 1:10 p. m.

Through Tourist Sleeping Car to San Francisco and Los Angeles. Via Chicago, Rock Island & Pacific railway, leaves Omaha every Friday at 1:10 p. m.

Through Tourist Sleeping Car to San Francisco and Los Angeles. Via Chicago, Rock Island & Pacific railway, leaves Omaha every Friday at 1:10 p. m.

Through Tourist Sleeping Car to San Francisco and Los Angeles. Via Chicago, Rock Island & Pacific railway, leaves Omaha every Friday at 1:10 p. m.

Through Tourist Sleeping Car to San Francisco and Los Angeles. Via Chicago, Rock Island & Pacific railway, leaves Omaha every Friday at 1:10 p. m.

Through Tourist Sleeping Car to San Francisco and Los Angeles. Via Chicago, Rock Island & Pacific railway, leaves Omaha every Friday at 1:10 p. m.

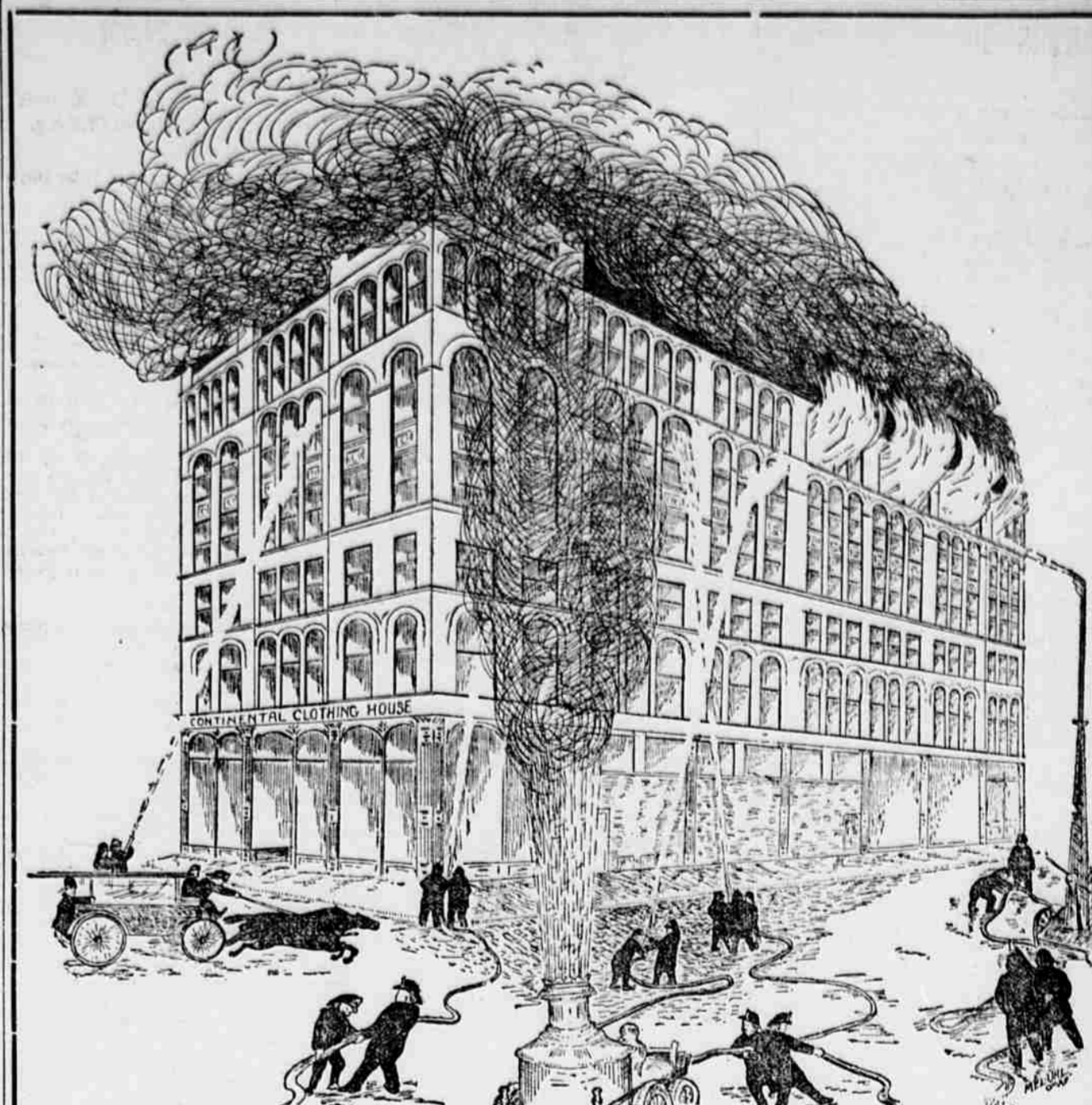
Through Tourist Sleeping Car to San Francisco and Los Angeles. Via Chicago, Rock Island & Pacific railway, leaves Omaha every Friday at 1:10 p. m.

Through Tourist Sleeping Car to San Francisco and Los Angeles. Via Chicago, Rock Island & Pacific railway, leaves Omaha every Friday at 1:10 p. m.

Through Tourist Sleeping Car to San Francisco and Los Angeles. Via Chicago, Rock Island & Pacific railway, leaves Omaha every Friday at 1:10 p. m.

Through Tourist Sleeping Car to San Francisco and Los Angeles. Via Chicago, Rock Island & Pacific railway, leaves Omaha every Friday at 1:10 p. m.

Through Tourist Sleeping Car to San Francisco and Los Angeles. Via Chicago, Rock Island & Pacific railway, leaves Omaha every Friday at 1:10 p. m.



The Great Sale of \$50,000 worth of men's, boys' and children's Fine Clothing, Damaged by water, only, at the great fire at the Continental building at Boston, on the evening of January 31st.

A "COSY CORNER." Ever since the trains on the electric lines on Dodge, Farnam and Harney streets have run along Tenth street to the Union depot, people have had difficulty in distinguishing them, especially at night.

Wonder if You Appreciate How far a little money will go with us. Come, now, you are getting a fair salary of wages. You know it is costing you less to live than ever.

RUPTURE PERMANENTLY CURED OR NO PAY UNTIL CURED. WE REFER YOU TO 8,000 PATIENTS—Write for Booklet—Examination Free.

See This Parlor Suit. 5 PIECES—Sofa, Easy Rocker, and two Flush Chairs upholstered in Crushed Mohair—Plush—all for \$17.50.

CHAS SHIVERICK & CO., THE LARGEST STOCK OF FURNITURE IN OMAHA. 1208 Douglas.

Do You Eat Well? This week we show a genuine English China 100 piece Dinner Set, formerly sold at \$21.00. This week price, \$9.85.

BOYD'S AMUSEMENTS. TONIGHT THE WORLD FAMOUS --Majon Brothers-- Grand Fairy-Like Pantomime Spectacle.

Peoples Furniture & Carpet Co. 1315-1317 FARNAM ST. OPEN SATURDAY EVENINGS UNTIL 10 O'CLOCK.

MERRIMANN THE GREAT. In a New Marvelous Entertainment. "The Artist's Dream," "Noah's Ark," "Columbian Transformation," "Atlantis Trunk Mystery," and Others.

POWER FROM GASOLINE. DIRECT FROM THE TANK. CHEAPER THAN STEAM. BEST POWER FOR CORNS AND FODDER MILLS, Baling Hay, Running Separators, Creameries, &c.

What is Ozomulsion?

Ozomulsion is a medicine—pure and simple; pure Cod Liver Oil, Ozone and Guaiacol—simple to mix if you only know how. Dr. Slucom is the only man that knows just how, and he has spent the good part of a lifetime finding out.

Notice to Stockholders. The annual meeting of stockholders in the Bee Publishing Company will be held at their office, corner 11th and Farnam streets, in the city of Omaha, on Monday, March 27, 1895, at 4 o'clock p. m.

"Pawnee Ticket 210" closes its engagement at the Empire with two performances today.