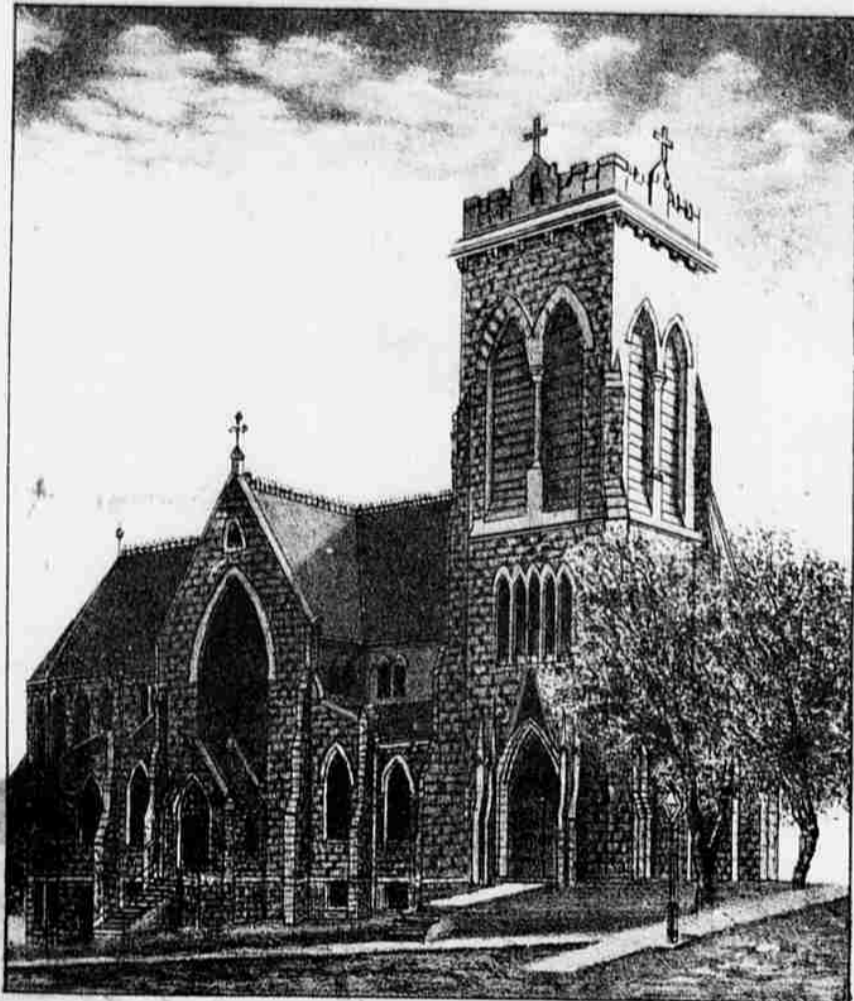


THE OMAHA BEE

1885

ANNUAL REVIEW

THE MILWAUKEE LITH. & ENGR. CO.



TRINITY EPISCOPAL CATHEDRAL.



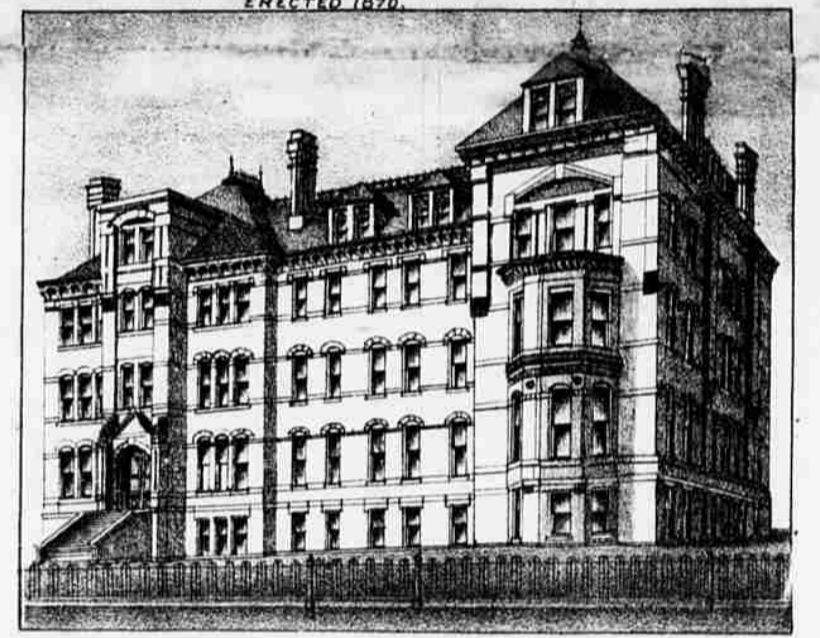
DOUGLAS COUNTY COURT HOUSE.
BEGUN 1851. COMPLETED 1884.



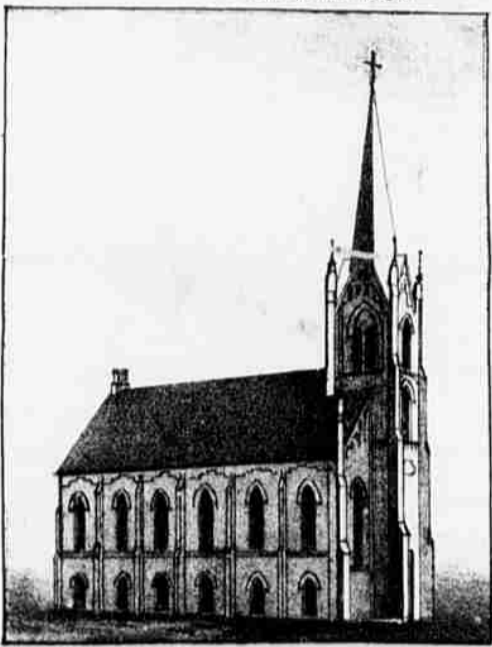
THE OMAHA HIGH SCHOOL.
ERECTED 1870.



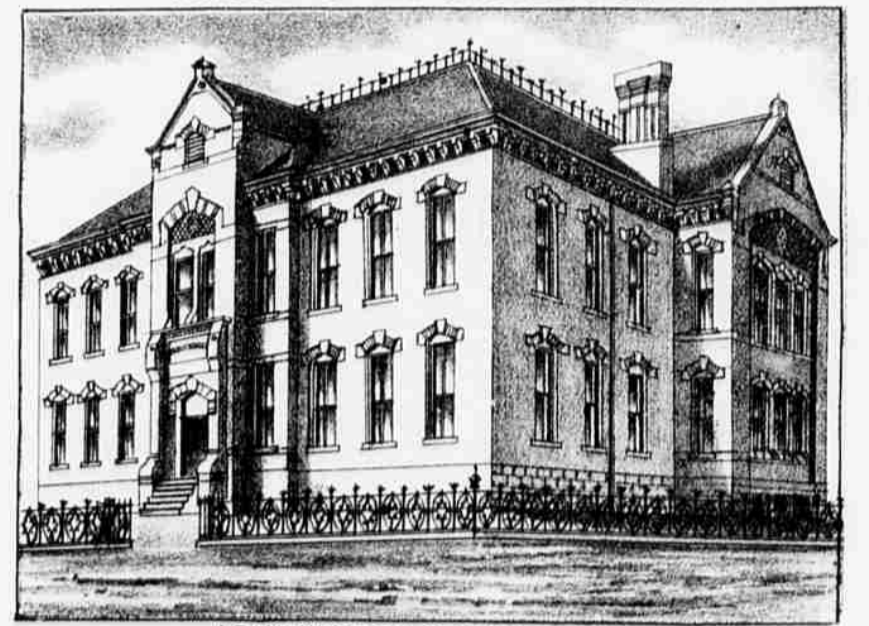
ST. PHILOMENA PAROCHIAL SCHOOL FOR BOYS.
ERECTED 1884.



ACADEMY OF THE SACRED HEART.



SWEDISH EVANGELICAL LUTHERAN
EMANUEL CHURCH.



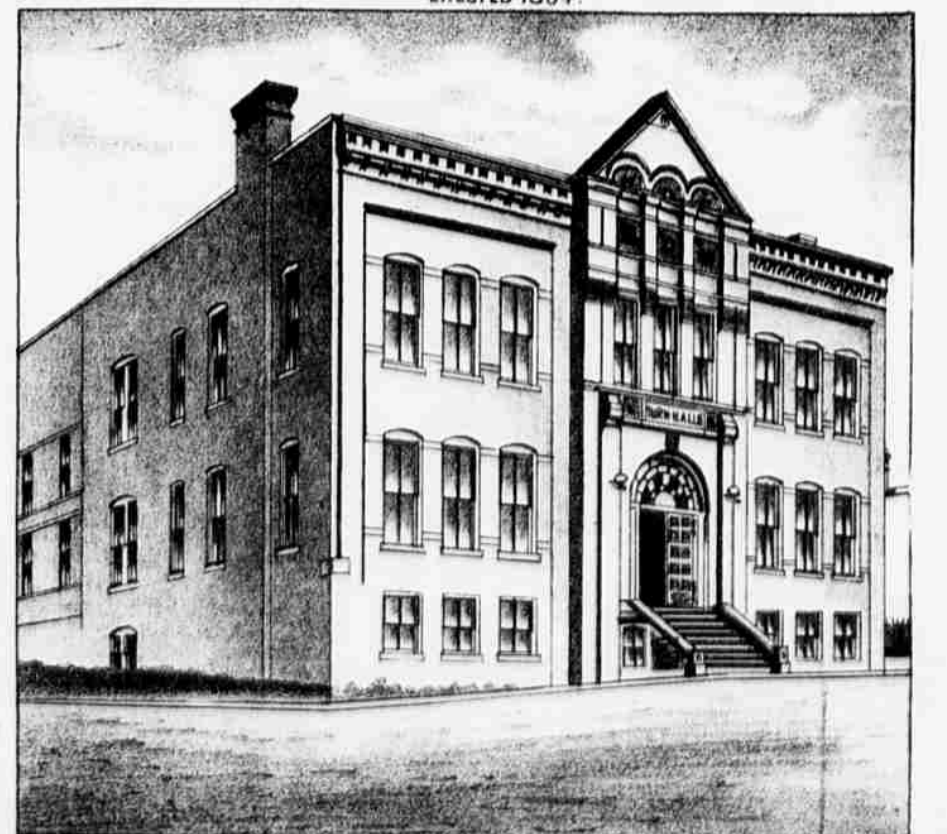
LEAVENWORTH STREET SCHOOL
ERECTED 1884.



KOUNTZE MEMORIAL
ENGLISH LUTHERAN CHURCH.



PAXTON HOTEL.
COR. FARNAM & 14TH ST.



GERMAN AMERICAN SCHOOL & TURNER HALL.