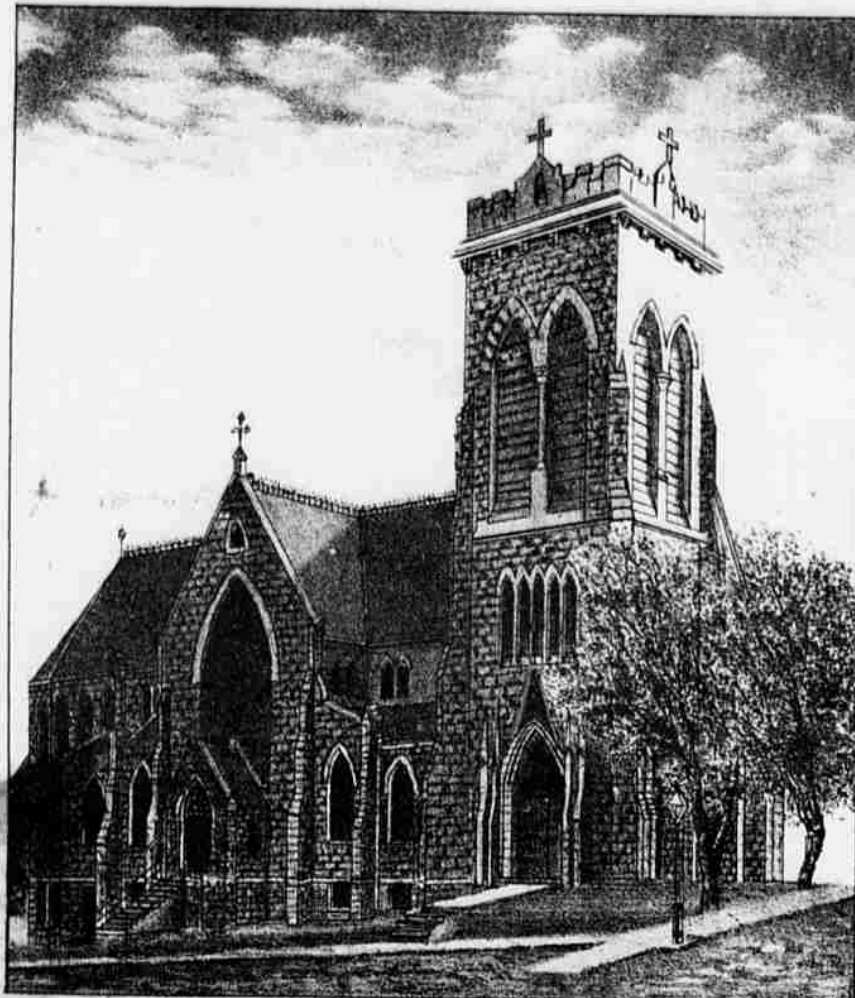


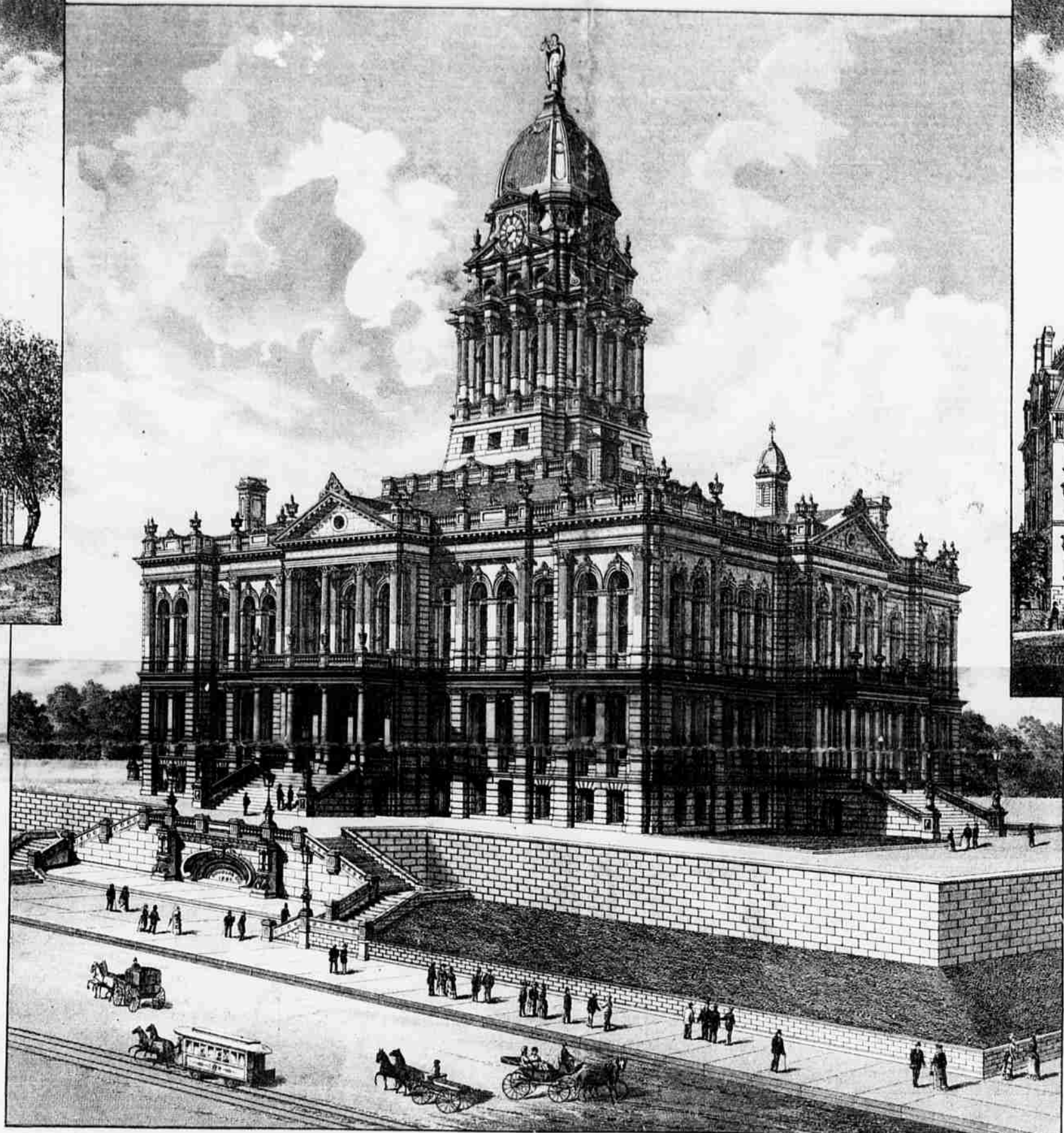
# THE OMAHA BEE

## ANNUAL REVIEW 1885

THE MILWAUKEE LIGHT & ENGRA CO



TRINITY EPISCOPAL CATHEDRAL.



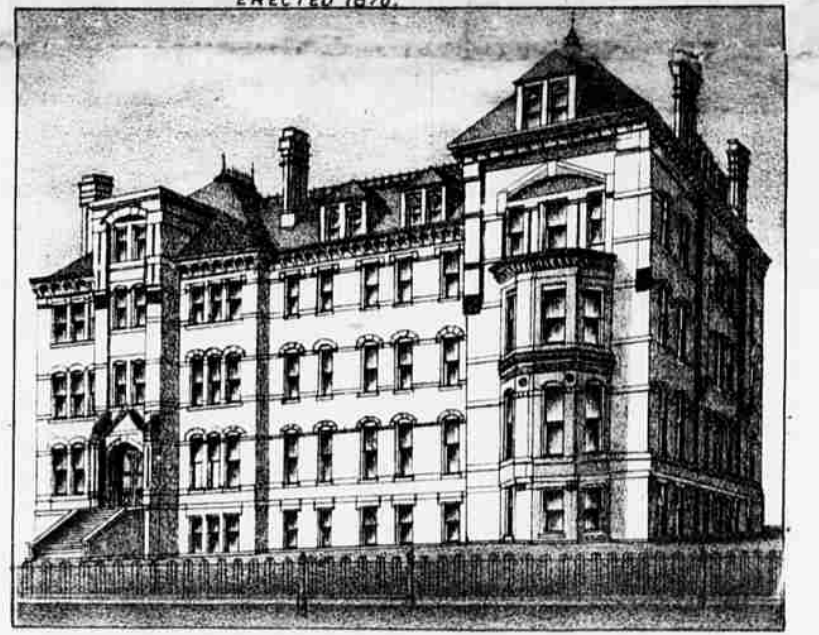
DOUGLAS COUNTY COURT HOUSE.  
BEGUN 1861. COMPLETED 1884



THE OMAHA HIGH SCHOOL.  
ERECTED 1870



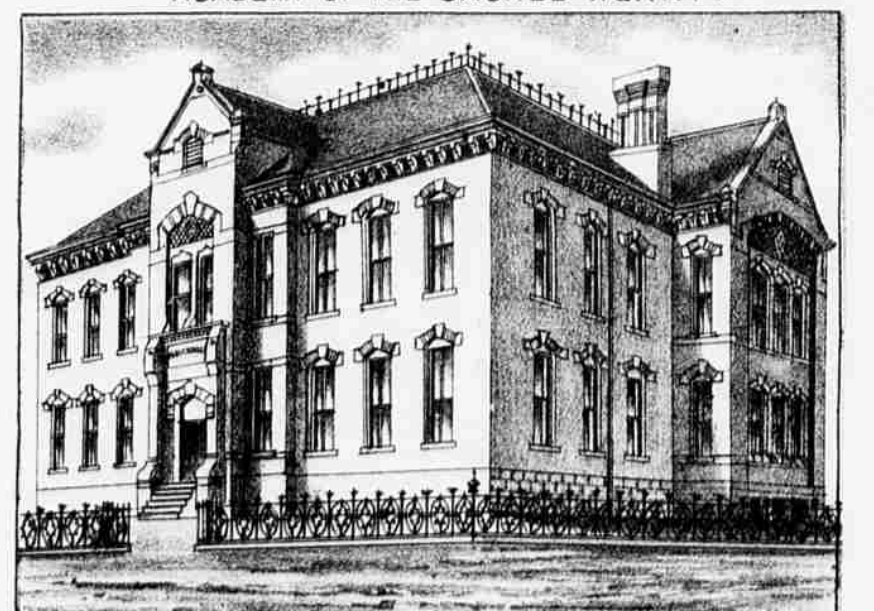
ST. PHILOMENA PAROCHIAL SCHOOL FOR BOYS.  
ERECTED 1884



ACADEMY OF THE SACRED HEART.



SWEDISH EVANGELICAL LUTHERAN  
EMANUEL CHURCH.



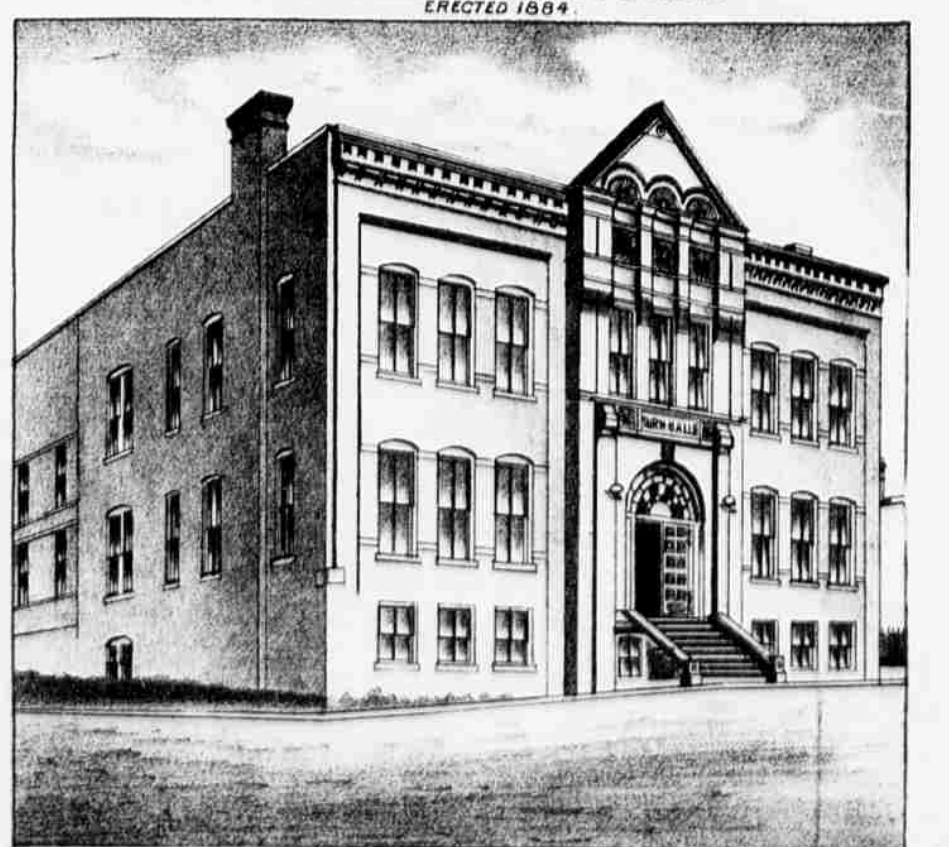
LEAVENWORTH STREET SCHOOL  
ERECTED 1894



KOUNTZE MEMORIAL  
ENGLISH LUTHERAN CHURCH.



PAXTON HOTEL.  
COR. FARNAM & 14TH ST.



GERMAN AMERICAN SCHOOL AND TURNER HALL.