

*There is Only a Short Time...*

*To Choose Summer Pleasures  
or Business Pursuits*

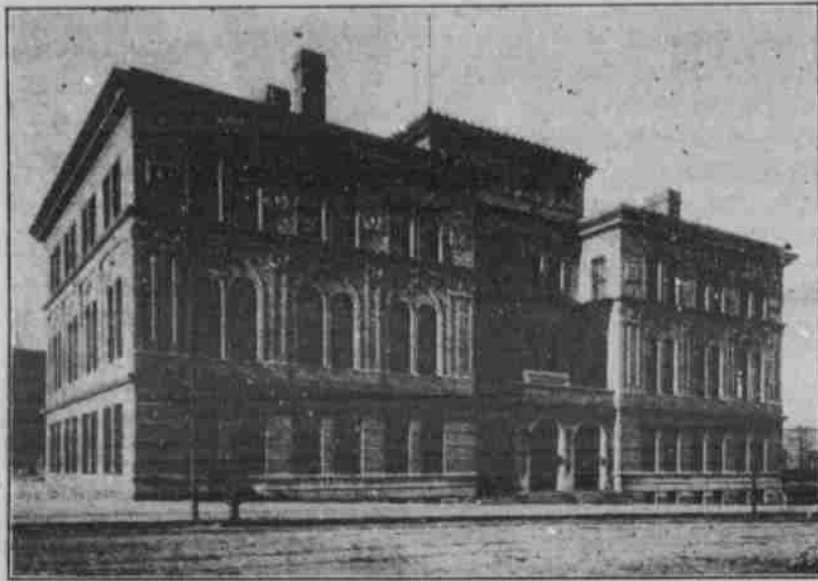
No odds which, you will need a wheel, and you can't make a mistake in seeing our Stock of CLEVELANDS AND CRESCENTS before you choose.

**Lincoln Novelty Works**

337 South Eleventh

**CREIGHTON MEDICAL COLLEGE**

Corner Fourteenth and Davenport Streets, Omaha.



The course in this school consists of four terms of eight months each. The first two years are devoted chiefly to laboratory and class room work; the last two to the more practical part of a medicine, consisting almost entirely of clinics and clinical lectures. For catalogue and further information write to D. C. BRYANT, Sec., McCague Building, Omaha, Neb.



**EPWORTH LEAGUE EXCURSION TO CALIFORNIA, \$45.00**

Tickets on Sale July 5th to 13th Inclusive. Return Limit August 31, 1901

**N. E. A. EXCURSION TO DETROIT \$23.05**

Tickets on Sale July 5th to 7th Inclusive. Return Limit can be had to September 1st by arranging for same with Joint Agent at Detroit

RATES AND LIMITS, BUFFALO AND RETURN, WILL BE ANNOUNCED LATER

City Ticket Office  
Corner 10th and O Streets  
Telephone 235

Burlington Depot  
7th St., between P and Q  
Telephone 25

**RUSH MEDICAL COLLEGE**

IN AFFILIATION WITH  
THE UNIVERSITY OF CHICAGO

ORGANIZED 1837

The academic year of Rush Medical College is divided into four quarters corresponding with those recognized with the University of Chicago, beginning respectively the first of July, first of October, first of January, and first of April, each continuing for twelve weeks. A recess of one week occurs between the end of each quarter and the beginning of the next following.

The general course of instruction requires four years of study in residence, with a minimum attendance upon three quarters each year. A student may begin his college work upon the first day of any quarter, and may continue in residence for as many successive quarters as he desires. Credit will not be allowed, however, for more than three consecutive quarters. At least forty-five months must elapse between the date of a first matriculation and the date of graduation.

For further information address,

**RUSH MEDICAL COLLEGE,**  
CHICAGO, ILLINOIS.

**MEN'S WEAR**

**THE WEEK'S SELLING**

A lot of Men's Fancy Socks, high grade goods, all new styles, but are small lots and broken lines of sizes, worth up to 40c, choice this week, a pair,

**19c**

Underwear for men, all styles and grades, cotton, balbriggan, and mercerized silk, plain and fancy. Prices \$1.00, 75c, 65c, 50c, and

**25c**

Men's Night Robes in a large variety of styles and grades, ranging \$1.97, \$1.50, \$1.25, 97c, 75c, and

**48c**

**Trunks, Suit Cases, Bags**

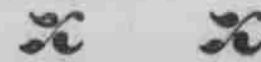
A great variety of the proper kind, properly priced.

**H. Herpolsheimer Co**

**You want the finest..**



**We have it!**



**CLARKSON**

**LAUNDRY**

**COMPANY**



**330-332-334-336-338-340**

**SOUTH ELEVENTH  
STREET.**