

**We Bow Down**

The Daily Nebraskan must bow in contrition for several misreported facts reported in its columns concerning the Junior Panhellenic and Junior Inter-Fraternity Council.

In a letter to the editor, seen in the Campus Opinion column elsewhere on this page, Jean Probasco, president of Panhellenic, outlined the plan of a get-out-the-vote campaign to be sponsored by the Junior Panhellenic and Junior IFC.

To further humble the Daily Nebraskan, an editorial was written on the subject, using the misreported facts. Again we bow in contrition.

However, a few things should be pointed out. In the editorial, printed October 1, the Daily Nebraskan called for making this a campaign among the University students, rather than the whole city of Lincoln. This the two groups are doing.

The Daily Nebraskan felt that going out into the whole city was out of the scope of the organizations' purposes, and that taking on the campus would be a large project in itself.

Secondly, the Daily Nebraskan wondered at the effectiveness of signs and banners and use of the card section. As it stands now the campaign will be carried out by signs in front of fraternity and sorority houses not sporting a Homecoming display. Also there will be the card section, used at the Homecoming game.

It seems to the Daily Nebraskan that a much more effective campaign would consist of talking with the students over 21 personally and urging them to register and vote. This would make some impression on these persons.

The immediate and substantial importance of the forthcoming state and national election demands the consideration of all groups of American voters.

Indeed, this election may well create more hard feeling, divergent belief and partisan turmoil than any other in recent times. The issues at stake are fundamental. The convictions they generate in the minds of the electorate are powerful.

The Student Council will hold a mock election October 28. This, too, will give the students the opportunity to express their opinions.

**With Sorrow**

Word was received here yesterday of the death of Nancy Miller, University alum, president of Mortar Boards in 1962-63. She was killed in an automobile accident in California where she was teaching.

The death of young persons, to outstanding persons who are and are to become leaders in the world of alumnae, is sorrowful and tragic.

It is with deep sorrow that the Daily Nebraskan notes this untimely death.

At this time it might be noted that two years ago an Innocent, a member of the honored honorary at the same time as Miss Miller, was also killed in an automobile accident. Steve Cass too might have been destined to be a world leader.

Last year a member of the same class, another outstanding student, Jane Fauquet was killed in an automobile accident.

The world cannot stand the death of its leaders at a pace such as this.

SUSAN SMITHBERGER

**! " [ ] \$ % & ' () \* ? -**

By Mike Barton

Lincoln is a recreational wasteland.

Notwithstanding innumerable cultural opportunities, and assorted governmental institutions, our fair city has little to offer.

Evidently the city fathers have excluded baneful influences so as to insure our sobriety. The escape valve is the Interstate.

Then again, perhaps this is the inevitable consequence of being situated in a quasi-metropolitan area. However, there are smaller towns with greater facilities.

Kids have a great time in Lincoln: midget baseball, midget football, swim clubs, and the like. College folks make their own fun. They rent a farm, they rent a motel, or they rent a television.

Consequently, the Univer-

sity is bequeathed the task of occupying our time. And their efforts have been noteworthy.

They conceive of an ice rink, or a mall on "S" Street. They expand the Student Union, and they sponsor big-time entertainment.

Meanwhile, the folks downtown censor the foreign films, and dismiss the question of liquor by the drink as a Communist plot.

Daily Nebraskan business manager tells me the campus is a \$15,000,000 market. You would think that some aggressive entrepreneur might take advantage of that fact.

Imagine some night spot specifically catering to the college crowd.

Lincoln is a great place to raise kids—little kids.

**LITTLE MAN ON CAMPUS**



I'M GONNA HAVE A 'SNAP' THIS SEMESTER—LOOKS LIKE I'LL BE TAKIN' TH SAME COURSES I HAD LAST TERM.

**CAMPUS OPINION**

**Facts Wrong**

Dear Editor: The article in the Daily Nebraskan September 30 about the Junior Panhellenic-Junior IFC project included several misreported facts.

The story stated the project was "to work jointly to promote complete registration and voting in the Lincoln area." This is not the goal which was presented at the meeting. The project is aimed at the student body.

Several ideas were proposed to make the project a successful one. We repeat—these were only proposals. Yet the Daily Nebraskan printed some of these proposals as definite plans, such as use of the card section on Band Day. At the time it was specified that we did not know at which game we would be using this section. We now have definite plans to use the card section at the Homecoming game, October 17.

Naturally we were surprised to read the October 1st editorial, also based upon misreported facts.

The editorial states "One wonders where this fits into the perspective of their organizations." To "prove" this statement the Panhellenic Creed was printed. Omitted, however, was the last line which reads "Good college citizenship as a preparation for good citizenship in the larger world of alumnae days is the ideal which shall guide our chapter activities."

Certainly the project would "fit into the perspective" of this organization on the basis of the Creed's last sentence, as well as the portion "for whole-hearted cooperation with our college's ideals for student life."

We hope that this letter will clear up the misconceptions which readers may have received. And we will

close with a reminder to register to vote.

Sincerely,  
Jean Probasco  
Panhellenic president

Dianne Michel  
Panhellenic vice-president

**We're Not Ready**

To the Editor: In the October 1 editorial, the Daily Nebraskan stated that the Junior Panhellenic and the Junior Inter-Fraternity Council were going to sponsor a get-out-the-vote campaign.

Speaking for the Junior IFC only, I suggest that the Daily Nebraskan assumed that we were going to sponsor such an event. The following things should be noted:

1) The Junior IFC has not elected officers yet, and, consequently, there are no committees as of now which would be able to deal with a get-out-the-vote campaign.

2) No official decision has been made as to whether we will sponsor a get-out-the-vote campaign or not.

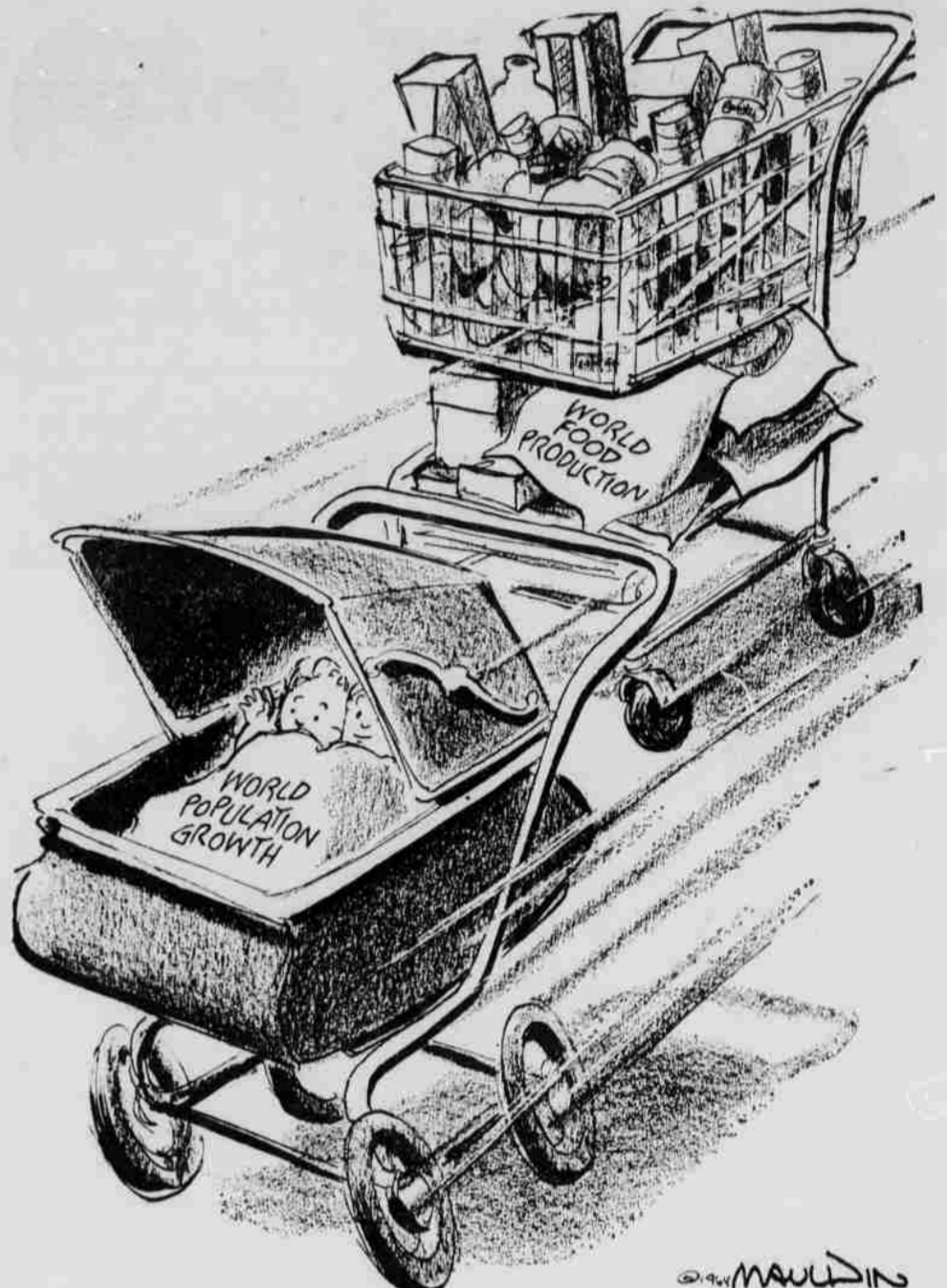
The Daily Nebraskan editorial has good points, but I personally feel that it should double-check its sources of information before sending the paper to press.

Sincerely,  
Steve Rosenquist  
Member, JIFC

**What If?**

Dear Editor: I'm reasonably sickly and like fun and games and am willing to pay a dollar a semester for the Nebraskan, but is that \$30 obligatory since only \$102 of our \$132 is officially tuition? What happens if someone with a genuine desire for an education and \$102 should promise not to go to Student Health or the Union or read the rag?

Larry Asman

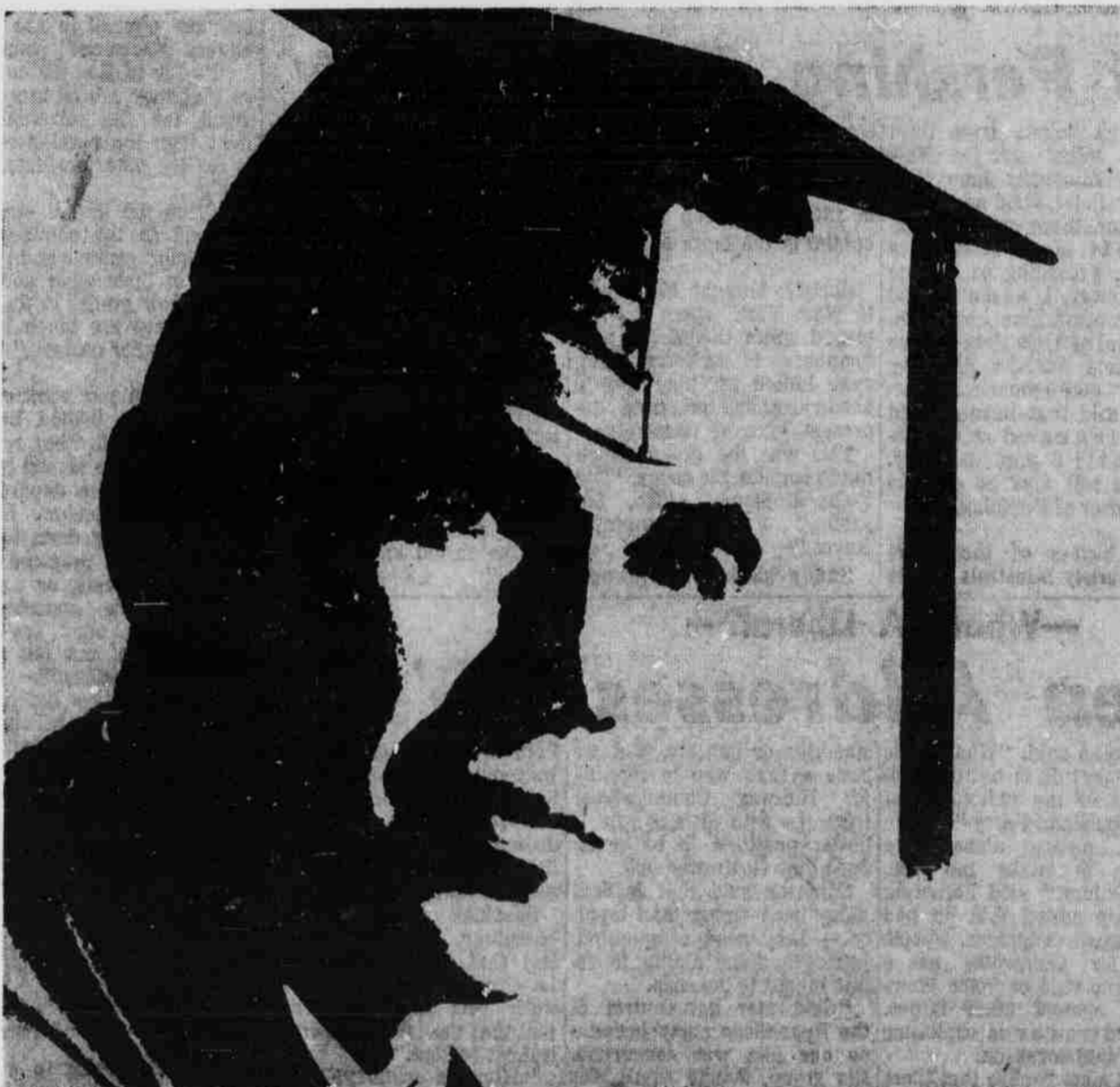


**DRAG RACE**

MAULDIN  
Chicago Sun-Times

RICH HALBERT, managing editor; FRANK PARTSCH, news editor; PRISCILLA MULLINS, senior staff writer; TRAVIS HINER, WALLIS LUNDEIN, JIM ROSSID, MARILYN HORGEMEYER, MARK PLATTNER, BARRY ABRAMS, junior staff writers; VICKI ELLIOTT, SUSIE RUTTER, LEE MARSHALL, copy editors; RICH EISER, LARRY JENKINS, photographers; LARRY LEISTREIZ, art news editor; PEGGY SPEER, sports editor; BOB SAMUELSON, sports assistant; BOB LEDIOTT, BUZZ MADSON, SCOTT RYNEARSON, business assistants; LYNN RATHJEN, circulation manager; JIM DICK, subscription manager.  
Entered as second class matter at the post office in Lincoln, Nebraska, under the act of August 4, 1912.  
The Daily Nebraskan is published at Room 51, Nebraska Union, on Monday, Wednesday, Thursday, Friday by University of Nebraska students under the jurisdiction of the Faculty Subcommittee on Student Publications. Publications shall be free from censorship by the Subcommittee or any person outside the University. Members of the Nebraskan are responsible for what they cause to be printed.

The Daily Nebraskan invites readers to use it for expressions of opinion on current topics regardless of viewpoint. Letters must be signed, contain a verifiable address and be free of libelous material. Pen names may be used. The Daily Nebraskan reserves the right to condense letters.



**What every graduating engineer (and his professors) should know about AC-MILWAUKEE**

Sure, everybody's got a career program. But we think you'll find ours a little more stimulating, more rewarding, and at least intriguing enough to spend the next minute or so reading about it.

We call it our "Career Acceleration Program." In it, you'll work on such advanced projects as an avionics system for supersonic aircraft, a guidance/navigation system for the Apollo Command Module and LEM, and a new guidance system for the Titan III space launch vehicle.

Seven hours a day you'll work on a specific project. You'll spend one hour each day in formal class work. These classes include courses in Inertial Instruments, Inertial Guidance, Digital Computers, Advanced Transistors, Advanced Servomechanisms, Integrated Circuits, Space Mechanics, plus other mathematics and undergraduate disciplines as required.

We also have a Tuition Refund Plan that pays all of your tuition costs upon satisfactorily completing college-level courses of study undertaken voluntarily. Our "in-plant" evening educational program offers additional opportunities for technical improvement.

If you are completing your BS or MS degree in EE, ME, Math or

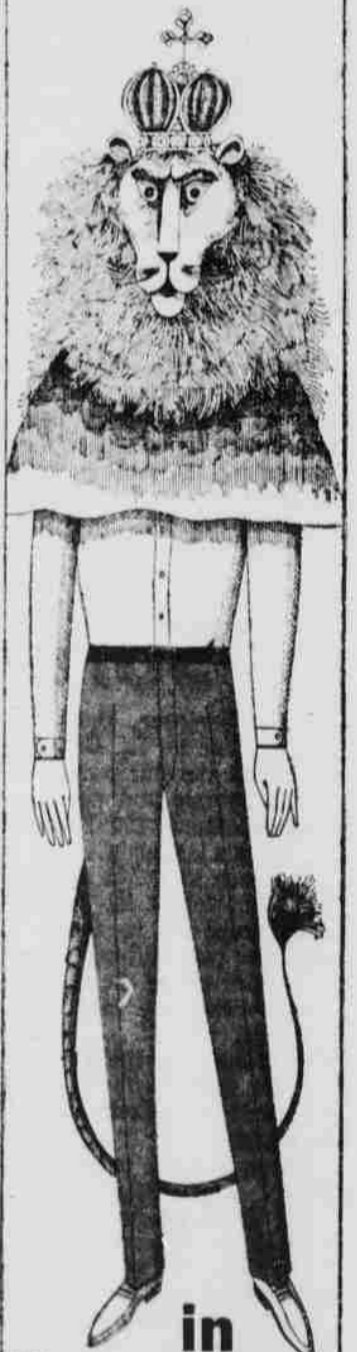
Physics, we invite you to inquire about the opportunities at any of our three locations. AC in MILWAUKEE—our main research, development and manufacturing facility. AC in BOSTON—our Research and Development Laboratory specializing in advanced inertial components; spacecraft and avionics guidance/navigation systems. AC in LOS ANGELES—our Research and Development Laboratory specializing in advanced airborne computers; ballistic missile and space booster guidance/navigation systems. For further information, see your college placement office regarding a General Motors/AC on-campus interview, or write directly to Mr. G. F. Raasch, Director of Scientific and Professional Employment, Dept. #5753, General Motors Corporation, Milwaukee, Wisconsin 53201.

PhDs, please note: Positions are available in all three AC locations for PhDs, depending on concentration of study and area of interest. You are invited to contact Mr. Raasch for additional information.



**AC SPARK PLUG**  
The Electronics Division of General Motors  
An Equal Opportunity Employer

**make like a lion, you beast**



**in Post-Grad slacks by h.i.s.**

You'll prance and dance and look lean and lethal in these pants. They trim you up and taper you down. Post-Grads are the king of campus styles because they're absolutely authentic. Neat belt loops. Narrow-but-not-too-narrow cuffs. Shaped-on-seat pockets. You can look regal for a pittance since they cost but \$6.98 a pair in 65% Dacron\* 35% Cotton. Buy 'em and roarrr!  
\*DuPont's Reg. TM for its Polyester Fiber