

## Sorority Rushing

As the summer draws to a close, sorority girls move into their houses to prepare for Rush Week. By the time that the rushees begin to arrive on campus, excitement is at a high pitch. The sorority women, however, must be content to sit on their lawns and watch the equally excited rushees move into the dormitory for all communication between the sorority girls and rushees, except at rush parties, is forbidden.

### Open House Groups

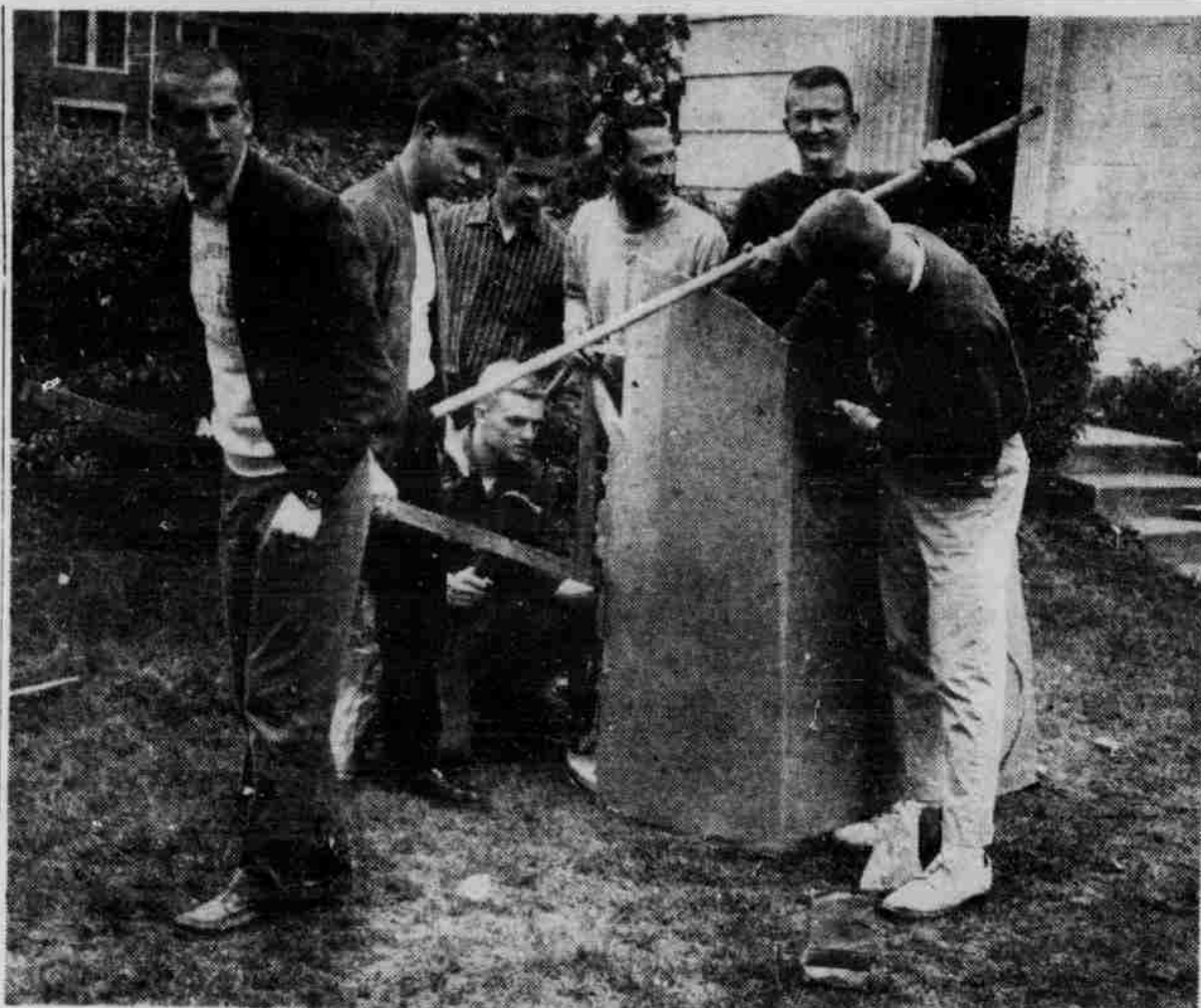
On the first day of formal rush, the rushee attends a short orientation session and is placed in a group for "open house". For open house she dons a suit or costume dress, a hat, heels, gloves, and purse. In her group she will attend each of the sorority open houses for a period of about twenty minutes. "Open house" is necessary for the rushee. It allows her to meet many of the girls of each sorority before she decides what sororities she is most interested in.

After "open house", the sorority women decide which rushees they will invite to Rush parties. These invitations, which are presented to the rushee the following day, are called "party bids". From these bids, the rushee registers for six parties. She may give one house no more than two parties. The parties consist of morning coffees, afternoon parties, and evening parties. During these parties the rushee can become better acquainted with the girls of the sororities under consideration, but she can make no statement of preference.

### Invitations Received

After her last rush party, the rushee returns to the dormitory where she files her preference with Panhellenic or lists her sorority choices in order of her preference. This preference is checked against lists handed in by the sororities. If a girl is included on the first list of her first-preference sorority, she is automatically invited to become a member. If she is not, she may have to take her second or third choice.

The next day, the rushees as-



A FRATERNITY pledge class builds a chariot in preparation for a chariot race held during Greek Week-end, a special week-end for fraternity activities.

semble dressed for a dinner party to receive their invitations to affiliate. Sororities are organized on the pledge-active basis. Under this system, the pledge must fulfill certain requirements before she becomes an active. Panhellenic requires that a girl must have a scholastic average of five before she can be initiated. In the past each house has been permitted to raise this average as high as they wished, but next year all the houses are planning to co-operate with a standardized average of 5.0.

Although sororities differ in respect to name, pins, and ritual; they are basically the same. Each maintains a house for active members and seeks to emphasize sisterhood and companionship. Each house is governed by student officers within the house and by Panhellenic, a governing body composed of alumnae, sorority presidents, and a Panhellenic advisor.

## Ivy League Remains Popular In College

When in the scurry of preparations for coming to college one always finds sandwiched in somewhere among tuition, course selections and forms to be filled, the question of wearing apparel. What should I take in the way of clothes? What do college students wear?

The answers to these questions are easily and economically obtained. Coming to college presents no problems as far as clothes are concerned. The typical stand-bys are the same at NU as anywhere else. There is no need to buy an entirely new wardrobe for college.

Comfort is the by-word on campus, particularly in classes. Sweaters and skirts, bobby socks or knee socks for the girls and khakis or slacks with shirts or

sweaters for the guys. Comfort goes from head to toe, especially at the toes. Choose sturdy but comfortable shoes. Walking to and from classes every day means constant wear of feet as well as shoes. Shoes not for fancy wear but for comfort.

It would be a smart idea for the girls to bring, if they have them, a pair of tennis shoes (Keds are common) because they are needed in phys. ed. classes. Also for lounging or informal wear these Keds are very popular. Another smart item to bring and very essential is a warm coat for Nebraska's cold weather. Also a lighter coat for warmer days (suede jackets are popular), and some apparel for rainy weather are smart items in both male and female wardrobes.

For dressy occasions (teas, programs, dinner, etc.) and church a tailored wool dress would fit the bill for the girls. Hats, gloves, and purse are essential also. Boys should have a dress suit or sport coat and trousers. For dances or parties cocktail dresses or formals are chic and for the guys a dark

## IFC Governs Frat Rushing

Twenty-four national social fraternities are represented by chapters on the University of Nebraska campus. An incoming freshman wishing to become a member in any one of these groups should participate in Fraternity Rush Week at which time he may be asked to become a member. Rush Week is held the week preceding New Student Week.

A fraternity is a group of college men banded together with a common purpose of friendship.

All rushees who plan to go through Rush Week must attend an orientation session to be held in the Student Union and the Open House periods following the orientation. No rushee may have more than one date per day with the same fraternity, and the rushee shall be obligated to fulfill his first date with each fraternity.

The fraternities on the Nebraska campus are: Acacia, Alpha Gamma Rho, Alpha Gamma Sigma, Alpha Tau Omega, Beta Sigma Psi, Beta Theta Pi, Delta Sigma Phi, Delta Tau Delta, Delta Upsilon, Farm House, Kappa Sigma, Phi Delta Theta, Phi Gamma Delta, Phi Kappa Psi, Pi Kappa Phi, Sigma Alpha Epsilon, Sigma Alpha Mu, Sigma Chi, Sigma Nu, Sigma Phi Epsilon, Tau Kappa Epsilon, Theta Chi, Theta Xi, and Zeta Beta Tau.

If a student does not pledge a fraternity during Rush Week he may pledge at a later time during the school year.

Rules for rushing and pledging are set up by the Inter-Fraternity Council, the fraternity governing body.

suit or tuxedo. There is no need to buy a tux because one can be borrowed or rented.

Ivy League is still the rage this year, not only in informal class wear but in sports attire also. Bermuda shorts of wool or khaki are good with knee socks and loafers or ballerine flats and sweaters, blouses, and blazers complete the ensemble. Believe it or not, fellows also wear the Bermudas and knee socks plus the traditional Ivy League cap. A welcome necessity for the girls is a pair of wool slacks. Slacks are just right for the places one doesn't want to wear jeans, bermudas or skirts. But all aside, the good old jeans and sweatshirt are by far the most popular garb to lounge around in.

Spring attire is much the same as everywhere. Cotton dresses, skirts, blouses, informal separates, lightweight trousers and shirts are the thing. All in all, coming to college doesn't necessitate buying a whole new "collegiate" wardrobe.

*If she's QUEEN . . .  
Treat her like one—  
Take her to the*

## Hotel Cornhusker

TEE PEE  
ROOM

THE  
LANDMARK

POW WOW  
ROOM

For that extra special Sunday occasion, enjoy the Sunday Brunch,  
11:30 a.m.—2 p.m. in the beautiful GEORGIAN ROOM.

**SCHIMMELservice . . . First in Food**  
**IN OMAHA IT'S THE HOTEL BLACKSTONE**

## ATTENTION ALL JOB HUNTERS

IF YOU NEED PART - TIME  
EMPLOYMENT DURING THE  
SCHOOL YEAR — COME SEE  
US.

### WE HAVE IT

JOBS TAILORED TO FIT CLASS  
SCHEDULES AND OTHER  
PERSONAL COMMITMENTS.

APPLY

## STUDENT UNION

14th & R Streets  
ROOM 1—MR. BENNETT  
UNIVERSITY of NEBRASKA