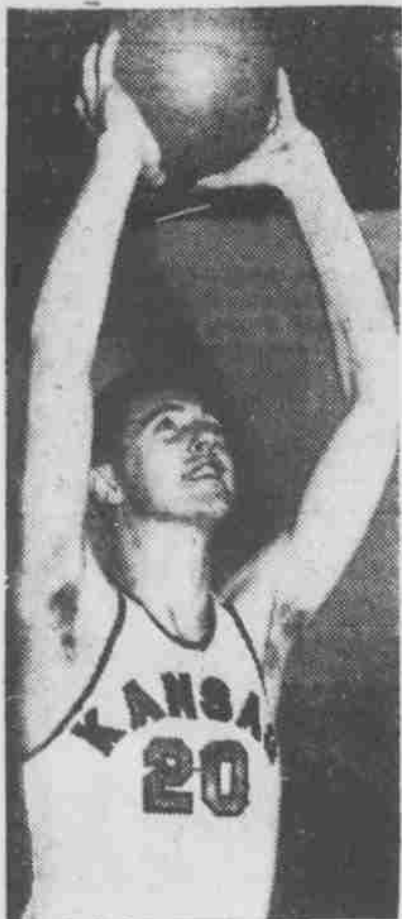


Jayhawk Hoopsters Meet N.U. Tuesday



EX-HUSKER—Gene Petersen, Kansas forward who led Nebraska scoring as freshman, will be playing his fourth year of Big Seven competition when the Jayhawks invade the Coliseum Tuesday night. Last year Petersen was runner-up in the individual scoring race, just four points behind the champ Claude Retherford of Nebraska.

BY DON BRYANT
Hoopsters from the Valley of the Kaw will invade the portals of the University of Nebraska Coliseum Tuesday night.

The Kansas Jayhawks, directed by Forrest C. "Phog" Allen, replace Kansas State as Nebraska's first conference foe of the new year.

Sporting one of the tallest cage teams in the country, the boys from the Sunflower State should give the Huskers a stern test.

Although potentially one of the strongest teams within the confines of the continental United States, it is doubtful that the Jayhawks will develop into such a powerhouse this season.

Loaded with sophomore talent that is physically the biggest in the country and the history of the school, Dr. Allen's prospects for the coming campaigns are indeed rosy.

Lovellette Paces K. U.

Pacing the inexperienced Scarlet and Blue squad is Clyde Lovellette, 6'9", 225 pound center from Terre Haute, Ind. He is the largest cager in K. U.'s history.

The agile Lovellette is an aggressive rebounder and is capable of hitting counters from long or short ranges.

Other sophomores that will look down on the majority of their opponents are Jack Carby, 6'7", Bill Houghland, 6'4", Bill Lienhard, 6'5" and Bob Kenney, 6'2".

Gene Petersen, 6'7" forward, who froshed at N. U., and Guard Claude Houchin, 6'5" will add the available experience to the Jayhawk club.

Good Long Shot

Petersen finished second in conference scoring last year, trailing Nebraska's Claude Retherford by 145 points. He set two scoring records for the Kansas school last year. His 96 tallies in six road games and 34 points against Creighton were both topped previous marks. In addition to his athletic activities, Petersen boasts grades higher than Phi Beta Kappa standards in pre-med school.

Kansas scribes tab Houchin as the "best long shot since Fred Pralle." He potted 248 points last season, ranking second behind Petersen. He landed a seventh place spot in Big Seven standings with a 114 point effort. He is definitely improved from last year and should be a big help defensively.

Mitt Still Tops

Mitt "Bus" Whitehead, 6-9 center from Scottsbluff, continues to lead Husker scorers with a nifty 15.0 game average. The rangy pivot man has racked up 165 points in 11 games and is the only Husker to score over 100 tallies.

Tony Lawry is Whitehead's nearest competitors with an 11-game total of 68. Sophomore Jim Buchanan and Bob Cerv, both guards are next with 67 points.

| Player | G | Field | Goal |
|--------------------|----|-------|------|
| | | Att. | Made |
| Mitt Whitehead | 11 | 156 | 62 |
| Anton Lawry | 11 | 59 | 22 |
| Jim Buchanan | 11 | 71 | 30 |
| Bob Cerv | 10 | 98 | 29 |
| Bob Pierce | 11 | 58 | 21 |
| Joe Brown | 11 | 78 | 27 |
| Joe Malescek | 10 | 77 | 16 |
| Bob Gates | 11 | 40 | 15 |
| Norman Wilness | 10 | 23 | 12 |
| Henry Cech | 9 | 20 | 10 |
| Larry Walsh | 8 | 17 | 7 |
| Ray Jusel | 6 | 14 | 6 |
| Darrel Brandenburg | 4 | 6 | 4 |
| Jim Fulford | 2 | 4 | 2 |
| Dick Srb | 2 | 11 | 2 |
| Andy Runtten | 3 | 3 | 1 |

| Player | Free | Throws | Fouls | Pts. | Avg. |
|--------------------|------|--------|-------|------|------|
| | Att. | Made | | | |
| Mitt Whitehead | 36 | 41 | 36 | 165 | 15.0 |
| Anton Lawry | 36 | 21 | 25 | 68 | 6.1 |
| Jim Buchanan | 16 | 7 | 17 | 67 | 6.0 |
| Bob Cerv | 34 | 18 | 29 | 67 | 6.1 |
| Bob Pierce | 41 | 21 | 21 | 66 | 6.0 |
| Joe Brown | 14 | 9 | 28 | 63 | 5.7 |
| Joe Malescek | 25 | 14 | 26 | 46 | 4.6 |
| Bob Gates | 18 | 16 | 13 | 40 | 3.6 |
| Norman Wilness | 16 | 7 | 9 | 27 | 2.7 |
| Henry Cech | 5 | 3 | 6 | 21 | 2.2 |
| Larry Walsh | 1 | 0 | 7 | 14 | 1.7 |
| Ray Jusel | 4 | 0 | 3 | 10 | 1.6 |
| Darrel Brandenburg | 2 | 0 | 3 | 6 | 1.5 |
| Jim Fulford | 5 | 2 | 3 | 6 | 1.0 |
| Dick Srb | 3 | 1 | 4 | 5 | 0.7 |
| Andy Runtten | 2 | 0 | 1 | 2 | 0.6 |

teams at any time in the game. Walt Weaver led the Phi Delta scorers with nine. Two men, Olson and Richardson each netted six for the Deltas.

The last game of the week was a good one in which the Phi Gamma Delta "B" team earned a 27-22 victory over the Beta Sigma Psi's "B" boys. Schleiger led the scoring with seven for the Phi Gams while Bunon dunked six for the Beta Sigs.

Remember the date changes for the running of the finals of the Indoor Track Meet. Monday will see the finals of the 50 yard dash and the high jump.

Athletic Board Authorizes an Extra Coach

Head football coach Bill Glassford has been authorized to hire an additional line coach by the University of Nebraska Board of Intercollegiate Athletics.

In a meeting held Saturday morning, the board gave Glassford the green light to obtain another aide at a salary of \$4,500.00.

It is believed that Glassford, who is now attending the NCAA football meeting in New York City, is trying to find the right man for the job. Glassford's other assistants were all re-elected at their present salary.

The board also renewed the contract of George "Potsy" Clark, Athletic Director, John Bentley, Sports Publicity Director, and L. F. "Pop" Klein, Asst. to the director of athletics.

Enlargement of the Stadium was one of the main topics of discussion as the board authorized an investigation of the cost of filling the North and South ends of the field.

An investigation will also be made as to the advisability of lowering the field and moving the track and to the cost of seats gained or lost.

The price of student activity tickets were raised to \$8.00 by the board and separate tickets will be sold for football and for basketball and all other sports. A ticket for basketball and other sports may be obtained for \$3.00 and the football tickets will be sold

4 ROTC Students Win Army Posts

Four senior advanced ROTC students at the University have been offered regular army commissions instead of the customary reserve commissions.

The cadets are: Darrel L. Lembrecht, infantry; Howard E. Schneider, infantry; Robert B. Vanderslice, corps of military police; and Rodney G. Benson, ordnance.

Potsy Clark said the increased cost of travel, equipment, and food has necessitated the slight increase in price of tickets.

Classified

CHECK: Remington noiseless portable typewriter, \$30, Don Fleisher, 1436 "S" 2-3777.

LOST—Around Temple, Brown zipper notebook, Eloise Dickerson, Phone 2-2727.

TYPING WANTED—Theses, thesis, etc. Call 3-3512 after 6.

GET set for the cold weather with a nice topcoat of gabardine or covert from AYERS CLOTHING, 1400 O St.

FOR SALE—Black brief case and tennis racket, Call 3-2892.

LOST—Delta Tau Delta pin in or near Burnett. Initials R. H. S. engraved. 2-5949. Dick Simonson.

AG STUDENTS—Rooms for boys close to campus, 3469 Dudley.

FOR RENT—Apartment for one or two on campus, 2-4438.

Intramural Sportalk

By BILL MUNDELL.

One sided victories were the fashion in Thursday's and Friday's cage games with six out of eight games played having a wide margin of victory.

Once beaten Newman Club led the scoring spree with a Friday 60-18 rout of the Methodist Student House. Behind the nifty sharp-shooting of J. Wallentine and Al Hammersky the Catholics rolled up a 41-6 halftime lead and coasted the rest of the way. Wallentine's 24 points topped the scoring column with Hammersky next, dunking 14.

The once beaten Lutherans looked invincible as they ran the Presbyterians ragged Friday in a 51-13 affair. The Presbys led 2-0 in the opening stages, but didn't see another point until the victors had run-up 16. Woody Bohn led the high flying Lutherans in scoring with 21 points with Lee Stauffer dropping in 14 for the winners. Shuler led the losing point-getters with four.

AGR'S Ramble
Alpha Gamma Rho had no trouble whatsoever in taking a "B" contest from Tau Kappa Epsilon, 52-16. The Tekes were never in the game while the Ag men poured it on during the whole fray. Waltermath of the AGR's led the scoring with 15 while Soder of the Tekes potted ten.

Unbeaten InterVarsity rolled to their third straight win in convincing style Friday, smothering Cotner House, 34-8. The IV boys had things all their way and scored at will while bottling-up the losers' scoring punch. Gordon Lucht led the scoring in the game with 12 markers to his credit.

In another one-sided affair, Alpha Tau Omega ran roughshod over the Sigma Nu's in a "B" game, 41-15. Starting late, the ATO's were held to a close game for about a quarter but then they broke loose and netted point after point in front of the bewildered Sig Nu's. Don Coupens led the winning scorers with 15.

Kappa Sigma took a 15 point victory over the Brown Palace in a Thursday "B" game by the score of 25-10. Alan Curtis was high-point man in the game, dropping in ten while two men, Thomas and Knapp each scored three points for tops in the Palace scoring.

Phi Deltas Win Thriller

In a game that was anything but one-sided, Phi Delta Theta edged Delta Tau Delta in a "B" game, 29-28. No more than three points ever separated the two

and now

Delmanettes

styled by DELMAN

come to MILLER'S

they're new
they're you

You'll see the famed Delman detail, the ever new Delman silhouette, the Delman delicacy of design in these dashing new DELMANETTES... at young prices! Wonderfully smart and exciting... they're styled for you!



"Bizarre" in simplified design, for dressiest times. Allover Blue calf.

19.95



"DeLorvely" again, because you demanded it! This time cleverly endowed with flat leather bow trim. Distinctive in Navy calf.

15.95

SHOES... FASHION FLOOR... Second

MILLER & PAINE