



**THEY'RE OFF!** All set for a big week-end are Mardelle Buss left, Robin Rauch, center and Marilyn Dawson. The gals wear classic campus garb suitable for any occasion whether it be the game, freshman hop, or church mixer.

## As I Was Saying...

By Pat Nordin

Emily Heinie, fast becoming one of the most quotable persons on campus, has come up with another retort. Her parting comment to a recent date was, "Well! It's been an experience!"

One of the cuter new couples is Janice Lindquist and Cliff Christensen. They can be seen almost any afternoon "coking" in the Crib.

Big Question: How did the recent "marriage plans" of Duane Demaree affect his date situation? Duane had everybody thinking that he was going to be married Sunday to a Norfolk girl—one doesn't scoff at a marriage license. Evidently someone was kidding, 'cause Duane is still single. . . .

Surprise? Nancy Howie may surprise her Kappa sisters by marriage in December. There are big reports on her summer romance with a big Texan. Attention **Guy Dean!**

Who is the mystery girl that Bud Buckley is currently squiring about town? The dark-haired girl has not yet been identified by Bud's friends.

A quick prelude of week-end plans shows that Sunday's column may be a scorcher—if there is anyone left to read it. What with the game, open houses, and Harry James, it'll be a blue Monday.

Topping the roster of University events tonight are the various church get-togethers. Gay blades Chuck Pederson and Dave Neely are going all out for the "date or drag" affair at the Uni Episcopal. Even the faculty will be there according to "Prexy" Faulkner, who has been contributing her talents to the decorations—and punch. See you all there—

They'll Chain Them Next Sigma Kappas, Alpha Phis, and Chi Omegas—it is too late to warn you about "portable" furniture, but we can advise a thorough canvas of local fraternity houses.

Alertness paid the other day for Kathy Swingle while on phone duty. The Lincoln theatre awarded her two free tickets to the movies this week-end for naming the current show. Anyone like to see "Luxury Liner" with Kathy this week-end?

Wonder if Win Wyman and Carmen Christoffel will ever get together? We nominate them as "couple most likely to succeed."

Boy Meets Girl Charles Newell has a gripe—This summer he met a girl in Oregon and called it "the real thing." Now that he's back in school, he's dated a certain Pi Phi three times. Well, on the night of that third date the girl from Oregon called the Sigma Nu house for him. The person who

## Fashion Plate

By Carolyn Bukacek

With swift, behind-the-scenes changes to accommodate the weather, the UN coed proves her ability to adapt herself to any climate. A standout against a grey sky is Kathleen Dodson in a gab-

ardine raincoat of bright blue, green and black checks.

The sun comes out when it views Marcia Tepperman in a cherry red skirt and white slip-on. Just then Mary Jo Hamilton further dispels gloom by appearing in a canary yellow jersey. She wears it tucked into a beige tweed skirt.

### Keep 'Em Warm

When there's a cool breeze, Shirley Douglas keeps warm in a cuddly navy blue short sleeved sweater. Sweater and skirt combinations rate, too, with Marilyn Dawson. She chooses a grey sweater and soldier blue gabardine skirt. Pearls accent the outfit.

For the picnic season Mardelle Buss favors red jeans and a trim white blouse. If the wind shifts to the north she keeps warm in a suede jacket.

### Off to the Hop

In preparation for the freshman hop Robin Rauch straightens the folds of her pastel wool date dress. The pink, grey and white stripes are used to advantage on the turn back collar and for the three-quarter length sleeves.

For the "special" date Charli Collison looks smooth in an expertly draped grey satin cocktail dress.

Remember—the top fashion on the campus tomorrow will be the scarlet and cream costumes of the cheerleaders and the jerseys of the team. Are you with 'em?

## Attention, Blind-Daters; End Your Confusion!

To save future embarrassment, this information is offered to prospective blind-daters, whether among the ignorant frosh class or the unobserving upperclassmen. As a supplement to little black address books and fraternity dating bureaus, this knowledge is necessary for a normal social life.

Embarrassing situations frequently arise when one attempts to date the girl in the next seat in biology class, only to discover that she's a sorority sister of his pinmate. At this point, a knowledge of the various pledge ribbons proves itself expedient.

Heed well this warning, so that next time it will be evident that the girl wearing the red ribbon in the next booth at the Crib is an A. O. Pi and not a prospective bull fighter. Also the girls seen on campus wearing the green and white aren't 4-H representatives, they're Kappa Delt pledges.

### S K's Choose Lavender.

Not lavender and old lace, but lavender and maroon are the choice of the Sigma Kappas. The holiday-conscious Thetas wear the black and gold colors of Hallow-e'en. This does not imply, however, that there is any resemblance between the proverbial witches and the Thetas for they are seldom seen riding on brooms since most have a preference for convertibles.

Reminding you that there are only 73 more shopping days until Christmas, Alpha Chis wear their red and green. A little more difficult to decipher are the colors of Alpha Phi, bordeaux and silver. Bordeaux may be interpreted in several different ways—as a beverage, fungicide or city in southern France. From this you can draw your own conclusion.

The S, D. T.s add a touch of

Parisian sophistication to the list with their ribbons of cafe au lait and old blue. For those not majoring in French, cafe au lait means coffee with cream. (We didn't know it either.) Another mystifying color combination is the brown and mode of the Gamma Phis. (According to Webster's Collegiate Dictionary abridged form, fifth edition, mode is "a color approaching drab, but of somewhat lower saturation and higher in brilliance." Now do you understand?)

Trying to outdo the others, the Alpha Xi's wear "double" blue and gold. You can explain that one! The Pi Phis get back to reality with their ribbons of wine and light blue, but the Chi O's indulge in another flight of fancy with cardinal and straw as their colors. These, incidentally, are the same colors reflected in their house at 480 No. 16.

### Kappas Prefer Boys.

The Kappa light blue and dark blue signifies their preference for boys. The triple ribbons of the Tri Delt are distinguished by their silver, gold, and blue colors from the bronze, pink, and blue of the D. G.'s.

If you are still confused, or have a short memory, perhaps you'd better try dating actives.

### University Dames to Give Party for Students' Wives

The University Dames are sponsoring a get acquainted party for all the university students' wives on Thursday, Sept. 30, at 8 p. m. at Ellen Smith hall. The purpose of this party is to help the new girls get acquainted with the Dames and their organization and to promote university activities.

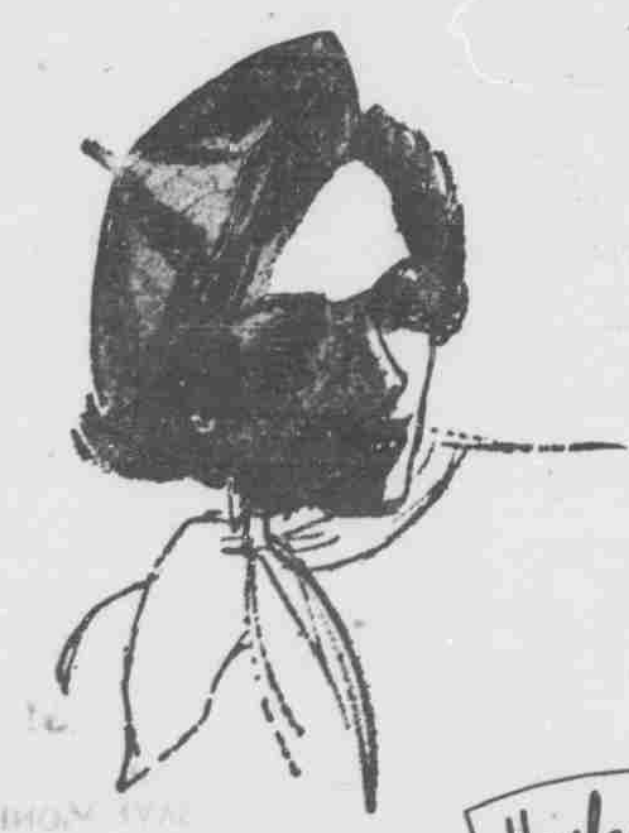
budget millinery **THIRD**

Jewel-tone **Beret by Betmar**

this fall's favorite for its debonnaire air. Velvetess in Grey Pearl, Emerald, Sapphire, Ruby, Gold or Topaz.

**4.95**

Howland-Swanson



IN LINE WITH

# FOOTBALL

CORNHUSKERS

GET YOUR

FREE



"N"

FEATHER

at

GOLD'S



SATURDAY . . .

9:30 to game time

Men—Men's Store  
street floor

Women—Sportswear  
second floor