



combines warmth with smart "get-about" in **the coachman's overcoat** with broadened revers, tremendous pockets . . . light to lift in Anglo Duveteen wool suede, finely lined. Perfect around town, on board or aloft in Green, Beige, Brown or Black. 7 to 15. **55.00**. Matching hat and bag **7.95** each.

second floor

Howland-Swanson

corrals mellowed suede

out of the West and the "caviar" class into your campus wardrobe!

Swing-back and belted jackets, **29.95** and **39.95**

sport shop on first



the GAY GIBSON GIRL

can be YOU in

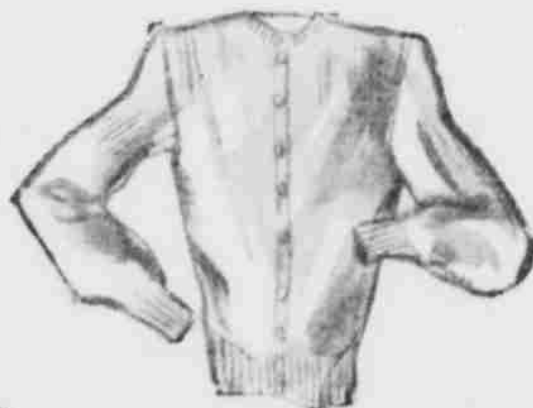
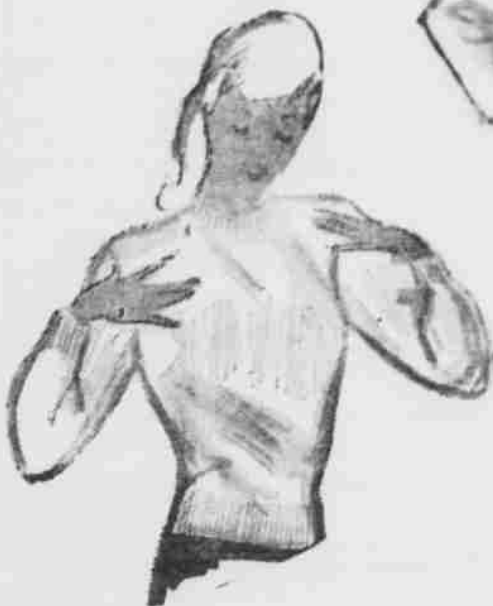
Romantic White crepe blouse, **7.95** to **9.95**

Swirling Black moire skirt, **7.95**
In Black bengaline, **9.95**



from our Blouse and Skirt Centre **first floor.**

Howland-Swanson



sport shop on first

via air-express . . . a beautiful bevy of **cherishable cashmeres**

softer than a kitten's purr. Poetic, pastels, smoky neutrals. Short or long sleeved Slipovers, **14.95**
Cardigans, **16.95**

Howland-Swanson