

# Ackerman to Edit Cornhusker; Ayers to Head Business Staff

Joan Ackerman, Arts and Science junior, will be the editor of the 1948 Cornhusker, it was announced yesterday after the Publications Board met to select the editorial and business staffs of the yearbook. Delphine Ayers, also a junior in Arts and Science, is the new business manager.

The new managing editors are Nadine Anderson, Jane McArthur and Harold Smith. Assistant business managers are Ray Biemond and Cherie Viele. Dave B. Rasmussen will serve as art editor.

## Activities.

Miss Ackerman has served as managing editor of the '47 Cornhusker. Vice president of Mortar Board, she is secretary of the student council, a past member of Tassels, and a member of Kappa Alpha Theta social sorority. Miss Ackerman succeeds Merrell Grant Shutt.

Miss Ayers has been an as-



Joan Ackerman

stant business manager during the past year. A member of Ne-

braska Masquers and the university band and orchestra, she was a junior attendant in the Ivy day May Queen ceremonies. She is a member of Kappa Alpha Theta. Miss Ayers is successor to Dean Skokan.

## Managing Editors.

Miss Anderson had charge of the section on honorary organizations for this year's book. A member of Theta Sigma Phi, journalism honorary, she serves on the YWCA cabinet and is affiliated with Alpha Phi sorority.

Miss McArthur was in charge of the organized houses section. A member of the AWS board and student council, she was chairman of the Ivy day sorority sing. She is a member of Delta Delta Delta sorority.

## Smith.

Harold Smith, newly appointed managing editor, was head of the military section for the '47 Corn-



Delphine Ayers

husker. He is a member of Sigma Nu fraternity.

The retiring managing editors are Joan Fankhauser and Mims Weeth.

Rasmussen, sophomore Art major in the college of Arts and Science, served on the art staff. He is a member of Sigma Alpha Epsilon fraternity. He succeeds Jerry Johnston.

## Business Staff.

Biemond, new assistant business manager, served on the business staff during the past year. A member of the cheerleading squad, he is affiliated with Sigma Phi Epsilon fraternity. Miss Viele is a member of Tassels and Chi Omega sorority. The two assistant business managers for the past year were Miss Ayers and Priscilla Flagg.

Any students who want to work on the 1948 Cornhusker should contact Miss Ackerman, and sign their names on the worksheet on the Cornhusker office bulletin board.



## Daily Nebraskan

Vol. 47—No. 134

LINCOLN 8, NEBRASKA

Sunday, May 11, 1947

## World's Only Tractor Testing Lab Resumes Operations on Ag Campus

University tractor laboratory, located on ag campus, is once more in operation. At the laboratory, only one of its kind in the world, tests completed last week resumed activity which was halted during the war.

Resumption of tractor manufacturing has brought tractor testing back. The chief reason is that any stock model or any type of tractor sold in Nebraska must have first passed the rigorous test at the ag campus laboratory before it can be sold in the state.

Most tractor manufacturers have their own testing and proving grounds but the laboratory is recognized as standard by tractor manufacturers and its recommendations are recognized in many countries. All the equipment used in testing has been designed by university engineers with the exception of a dynamometer used to determine belt horsepower, which is manufactured by General Electric.

### World Recognition.

Recently, two members of a Norwegian farm equipment importing concern, in the United States to study the latest developments in tractors and farm equipment, visited the laboratory to investigate the work being done. The "Farmers Weekly," a London publication, has used several feature articles to explain the work of the laboratory to English farmers.

L. E. Larson, engineer in charge of the testing, says that the problem of selecting a new tractor is for many farmers a very real one.

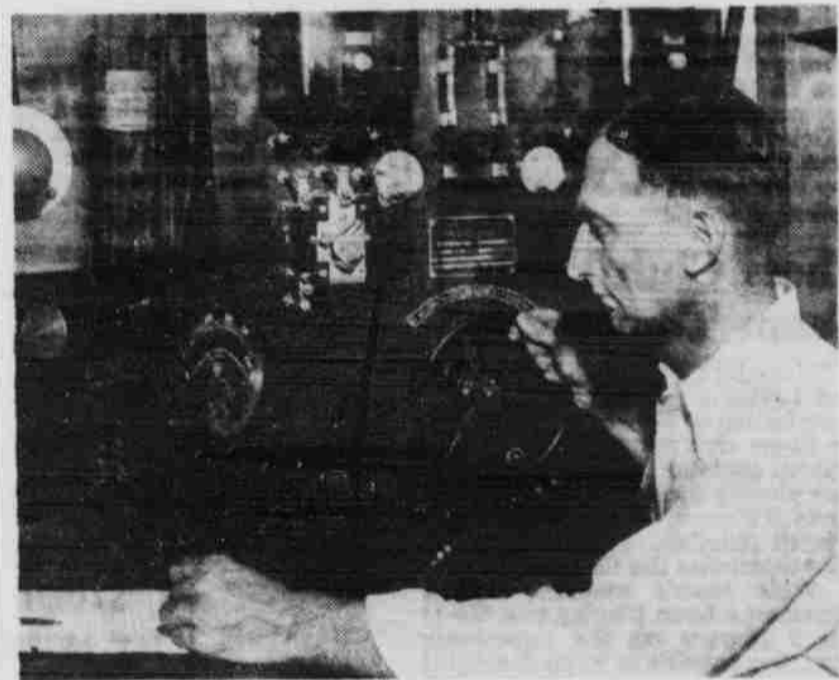
See TESTING LAB, Page 4.

## Ag Exec Board Elects Officers, Set Party Dates

Duane Munter, ag junior, has been elected president of Ag Exec Board. Other officers are: Lillian Locke, vice president; Frank Loeffel, secretary; Bob Hamilton, treasurer.

Ag Exec Board, student governing body on Ag Campus, will sponsor Farmer's Formal and the Christmas party next year. The board combines jointly with Home Ec club to sponsor the Ag Spring Party.

Farmer's Formal will be held Oct. 3, 1947 and the date for the Christmas party has been set for Dec. 17. The board will also revive the honors convocation which has not been held since 1942. The annual function, honoring high scholarship, has been set for Dec. 16.



L. E. Larson, engineer in charge, at the dynamometer which is used to measure belt horsepower at the tractor testing laboratory.

## Harrington, Gamma Phis, Win IM Speech Trophies

Paul Harrington, Don Farber and Catherine Ham took first, second and third place honors, respectively, in the Delta Sigma Rho Intramural speech contest finals Saturday morning. The house trophy went to Gamma Phi Beta, and Alpha Tau Omega, with only one point less, was given second rating.

### Rating Basis.

All ratings were based on accumulative quality. This means that points were carried over from the first and second rounds and added to the total number. Finishing scores were decided in the finals.

Harrington, a member of Sigma Alpha Epsilon, won the trophy with his speech on "Should the Sales Tax Be Used as a Method of Raising Revenue for Nebraska Schools?" Farber spoke on "Should the U.S. Government Outlaw Strikes Against Public Utilities?" and Miss Ham's topic was "Should Hawaii and Alaska Be Admitted to Statehood?"

Farber is a member of Sigma Alpha Mu and Miss Ham is a Gamma Phi Beta.

### House Entries.

Gamma Phi Beta house entries were Rosalie Wetherfield and Miss

Ham. Miss Wetherfield spoke on "Should the President's Term of Office Be Limited to Eight Years?"

John Wenstrand and Dick Berkeimer, Alpha Tau Omega entries, took second place in house competition with "Should Political Parties on the University of Nebraska Campus Be Abolished?" and "Should the U.S. Grant Military Aid to Greece?" respectively.

### Judges.

The contest opened Tuesday night with 44 entries, which narrowed in the semi-finals Thursday night to 21. Nine students competed in the finals, and were judged by Clarence Flick, speech instructor; Donald Olson, contest director; Helen Plasters, Ted Sorensen, and Gordon Lippitt, YMCA director.

Delta Sigma Rho prexy Betty Jean Holcomb presented the trophies to the winners.

The contest was open to both men and women students carrying 12 hours or more of work with passing grades during the current semester, and who were not members of Delta Sigma Rho or of the debate squad.

## Dorms For Men To Open In Fall

### Sophomores, Juniors, Seniors Eligible To Apply For Rooms

University students who will have sophomore, junior or senior standing during the 1947-48 school year may apply May 14 to May 21, inclusive, for admission to the new Residence Halls for Men which will open next fall.

Applications should be made to the office of the Dean of Student Affairs in the Administration building. The order in which applications for residence are received will have no bearing on students accepted. All applications will be pooled and a drawing will be held May 23.

### "Daily" To List.

## Frosh Honorary Holds Initiation

Twelve second semester pledges were initiated in Alpha Lambda Delta, freshmen women's honorary, at an evening ceremony Thursday in Ellen Smith hall.

Officers for next year who were elected are Wanda Young, president; Ruth Nelson, vice president; Virginia Malicky secretary and Margaret Steteman, treasurer. Dr. Winina Perry was re-elected faculty advisor and Beth Norenberg was chosen senior advisor.

National certificates of award for maintaining eligibility average thruout seven semesters were granted senior Alpha Lambda Deltas Betty Jean Latta Catlett, Kathleen Hayes, Betty Rose Hubka, Eleanor Knoll, Doris Martens, Hedy Schultz, Margaret Shelley and Helen Wulf. Barbara Jane Smiley earned the national award for the highest average.

### Honorary Members

Elizabeth M. Tierney, professor of theory and history of Music, and Dean of Women Marjorie W. Johnston were made honorary members.

New initiates are: Patricia Ray Brown, Marilyn Ethel Church, Marilyn Jane Eidam, Margie Arlene Gentry, Ardis June Lostroh, Virginia Ruth Malicky, Ruth Eleanor Nelson, Eloise Linda Paustian, Carmen Inez Shepard, Margaret Agnes Stegeman, Mary Dolene Webber and Wanda Arlene Young.

## Alpha Kappa Psi Pledges Thirteen

Alpha Kappa Psi, professional business fraternity, has announced pledging of thirteen new members.

Pledges are: Glen Blinde, William Feehan, Tom Hyland, Joseph Kase, Jack Kent, Robert Koenig, Jean Lang, Orville Muenchaw, Richard McDaniel, Tom Quinn, Edwin Scott, Lloyd Whitney and Walter Wolfert.

After pledging ceremonies, Richard M. Bourne of the university Economics department discussed labor legislation pending in Congress and pointed out differences among the measures.

On May 24, students whose names were drawn will be listed in the Daily Nebraskan, and notified later by mail by the Dean of Student Affairs. Those selected will have until June 7 to sign contracts for space at the Dean of Student Affairs' office.

Rooms will be allotted to 180 students, approximately 60 each for the sophomore, junior, and senior classes. The remaining space for 88 students will be allotted to new students matriculating as freshmen next fall.

### Rent: \$50.

Two types of accommodations are available: In Unit A there will be four men assigned to a room. These rooms are equipped with chairs, desks and clothes cabinets for each man. At either end of each floor are dormitory-style sleeping rooms, each with twelve double-deck single beds. Rent for space in Unit A per semester is \$50.

In Units B and C there will be two men assigned to a room. Each room is equipped with chairs, desks, clothes cabinets and double-deck beds. The rent for space in Units B and C is \$65 per semester, and \$70 per semester for corner rooms.

### No Installments.

A security deposit of \$10, in addition to the semester rental, is required at the time a person contracts for space. The full semester rental is payable in advance before occupancy. Payment in full of the first semester rental charge must be made at the Comptroller's office in the Ad building on or before Sept. 15, 1947. Installment payments or delinquent accounts will not be permitted.

Residents in all units will furnish their own towels, linens and bedding. Each student must arrange and pay for his own laundry service.

Each unit will be supervised by a Resident Counselor, and maid service will be provided to care for housekeeping. The See MEN'S DORM, page 4.