

Ragged Edges

BY NINA SCOTT.

The Navy Ball seems to be the ultimate in excitement for this period of rest from the week. Marilyn Boettinger, KKG, and new pinmate, Phi Psi Fred Hecox will go. Betty June Baldwin, better known as "Baldie," of the Alpha Phi domain, and Beta Bill Hawkins are week-ending in Omaha for the affair. Kathie Schaecher, Kappa, and former pinmate Chuck Gleason will spend the week-end as guests of Ginny Turner of KKG, whose escort will be famed Phi Psi Pete Anderson.

And there's another side to ball dates. All has to do with DG Pat Kocum's refusal to attend with Phi Psi Pete Foe. Has something to do with trenchmouth naively speaking, whatever could such a condition have to do with such an outcome?

A steady affair in the first stages is that of Barbie Russell, cute blonde, and Stan Mark, Sigma Nu and Hugh Allen, Delta, wishes he could say the same for his relations with Kappa Bev McMains. For night onto weeks now he has had what might be called a crush on her.

Intrigue in Omaha.

Beta's Dean Neal and Larry Stoner are parties in some intrigue situated in Omaha. Seems they both had dates with a certain Dorothy Sorenson on the same nite. Nobody seems to know how the whole thing worked out and they're still speaking to each other which is some consolation.

Little Janie Frye may be breaking the AWS rules by wearing a corsage to Veloz and Yolanda Wednesday, but who wouldn't when the man sends you two, not one, but two brown orchids. Janie's a DG and the man in question is a Fiji.

So that you all can keep in touch with the couples seen more than frequently together, a few of them are: Gamma Phi Myra Lee Haden and ATO Phil Oxley.

Alpha Phi Jo Bauer and Ware Christianson. Jettie McIntosh

Lt. W. C. Gilmore Receives Silver Star for Bravery

Second Lieutenant Wilson C. Gilmore, Infantry, (deceased) has been awarded the Silver Star Medal for gallantry in action. Captain Leigh P. Hopp, infantry commandant at the university, presented the award to Lt. Gilmore's wife, Mrs. Bette E. Gilmore, at a ceremony held in the Presbyterian church in Tecumseh, Neb., on Dec. 27, 1944.

The Silver Star ranks next to the Legion of Merit and is the first of this class awarded to a former student of the university during World War II to be presented by this department.

Leads Patrol.

Lieutenant Gilmore received his citation for gallantry in action, when a hostile attack created a dangerous gap in the battalion defense line during the period for March 2-5, 1944. He led a patrol into enemy-held terrain in an effort to ascertain the German strength and dispositions. He held off the German troops alone, while he sent his patrol back with the valuable information, according to an army release.

Lieutenant Gilmore received his A.B. degree at Omaha university and attended Creighton university for one year. He entered the college of law at the university in 1940, graduating in 1942. After graduation he entered the armed forces and was selected to attend Officer Candidate School (Infantry), graduating in January, 1943.

and John Van Horne, Delta, and there's a scoop on that last one.

Annapolis Midshipman Dean Johnson presented Jan Routhitt, AOPi, with a miniature and she passed the candy to the AOPi's Monday nite.

Babette Stenger, Alpha Phi, spent last week-end tearing around with Sigma Chi Marvin Bowhay. Just where Butch Schroeder, Fiji, enters into this is the question, and another unhappy couple is that concerning Joan Fankhauser, Kappa, and Johnny Bell, Sigma Chi. Both seem to be suffering from melancholia.

No jokes, no puns, no nothin'. Just so long. It's been soooooo long.

Peace . . .

(Continued from Page 1.) been made by the planning committee.

Committee No. 1: Eleanor Knoll, chairman; Kay Hayes, vice chairman.

Committee No. 2: Virginia DeForrest, chairman; Towne Club, vice chairman.

Committee No. 3: Shirley Jenk-

ins, chairman; Bill Olson, vice chairman.

Committee No. 4: Jean Remmenga, chairman, Ed Robinson, vice chairman.

Committee No. 5: Betty Lou Horton, chairman; Grace Steckley, vice chairman.

Committee No. 6: Anne Wellensiek, chairman; Dexter Sharpe, vice chairman.

Committee No. 7: John Lind, chairman; John Basarick, vice chairman.

Committee No. 8: Myra Colberg, chairman; Marie Abraham, vice chairman.

Committee No. 9: Margaret Neumann, chairman; Lois Everingham, vice chairman.

Committee No. 10: Margaret Corbitt, chairman; Lavawn Johnson, vice chairman.

Committee No. 11: Hal Schwamb, chairman; Claire Kepler, vice chairman.

Committee No. 12: Irving Epstein, chairman; Mary Helen Thoms, vice chairman.

The Worcester Polytechnic institute News figures that war-busy students are working a 70.6-hour week under the accelerated program.

Flight Training

Government Approved School

Flight lessons arranged at the Union Air Terminal by appointment. Night classes for ground school instruction. 2415 O Street. Phone 6-2885 or 2-6124.

Lincoln Airplane & Flying School

Science Seminar Schedules First Meeting Friday

M. K. Elias will speak Friday on "Size Factor in Individual and Race," to open the second semester faculty seminar in the biological sciences. This meeting and all the others will be held at 4 p. m. Fridays in room 201 of Bessey hall.

The other speakers will be C. B. Schultz, "Problems Concern-

ing Size and Growth of Individuals in Paleontology," Feb. 23; D. D. Whitney, "Inheritance of Man," March 9; H. G. Holck, "Studies on the Relation of Sex to Drug Action," accompanied with demonstrations, March 23; H. O. Werner, "Physiological Problems Encountered in Potato Production in Nebraska," April 9; L. E. Hansen, "Vitamins and Animal Nutrition," April 20; and A. E. Dimmond, "Methods of Determining Mildewproofness in Fabrics," May 11.

TOWNSEND PHOTO.

ROSELAND

921 "O" St.

Jam Session

Paul Ohlhieser featured on Ride Tenor Sax

The Greatest Local Exponent of Boogie Woogie Piano

BOBBY FOSTER and his ORCHESTRA

DANCING FROM 9 TO 12

TONIGHT

GET YOUR KICKS

LOCALLY OWNED • LOCALLY CONTROLLED

GOLD & CO.

WE GIVE S & H GREEN STAMPS

Styles to delight all in our

Suit Show

Sizes 10 to 18 **49⁹⁵**

Suits are meant for the busy life every woman leads now-a-days! Here are wonderful wool suits that outdo your fondest hopes for the Spring season. Superbly tailored of 100% wool crepes, worsteds and gabardines. In solid colors, pastel or dark shades, sizes 10 to 18.

GOLD'S . . . Third Floor



Nothing so fresh as Lingerie Trimmed Suit-Frocks

Sizes 12 to 20 **16⁹⁵ to 29⁹⁵**

Suit frocks are the magic costume in your spring wardrobe. They'll do wonders . . . these simple dresses in 2-pc. styles with lingerie trim! The indispensable dress for your wardrobe . . . navy or black rayon crepe.

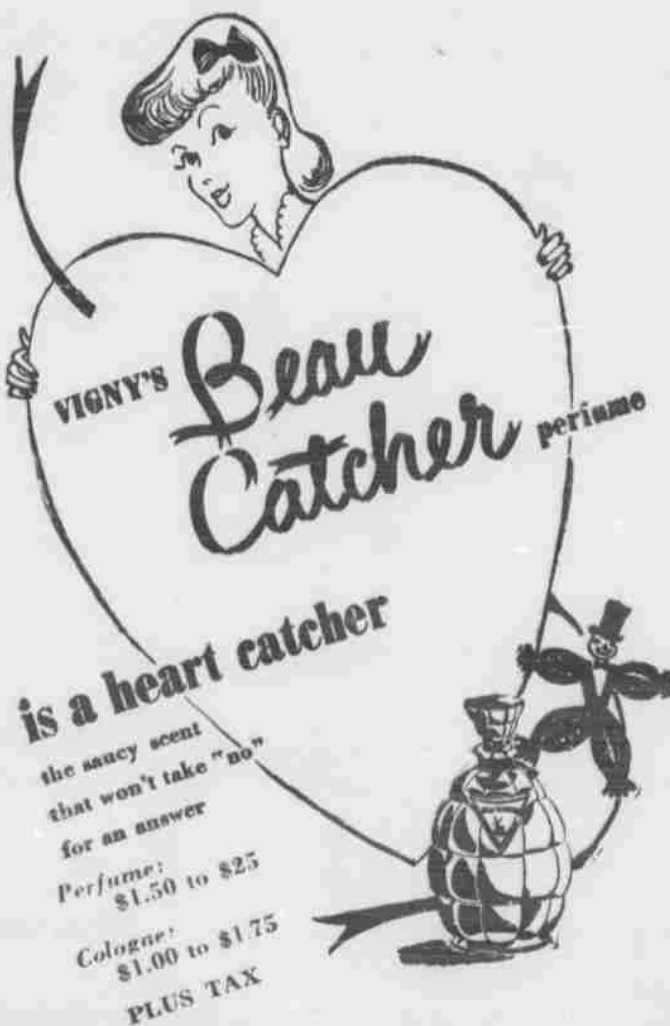
GOLD'S . . . Third Floor

CLASSIFIED

10¢ a line per day. Payable in advance only.

LOST—Bottom part of black Shaeffer pen. Call 2-2304. Jean Lipsitt.

LOST—Sigma Chi jeweled pin by Don Pegler. Reward offered. Call 2-7442.



MAGEE'S