



Kampus Kaperings

with Marion Cramer

Kappa Phi

announces the pledging of Alleen Brooks, Iris Lane, Ardis Lane, June Morrison, Loraine Beans, Barbara Manning, Ina June Burrow, Jane Thurtle, Arleno Kellenbarger, Janice Hagelin, and Neva Bishop.

Threesomes

of various types were noticed over the week end. For instance that coupling which is becoming more common every week, Sigma Delta Tau Anne Arbitman and SAM Norm Veta, was joined by a third party last night when Jerry Bernstein played with them in the evening.

When last year's Beta Bob Clow came down for the week end and the "Crud" party, he discovered that the NU campus had several very nice attractions, mainly one Nancy Halligan, Alpha Phi beauty queen candidate. But Tom Woods wasn't at all in favor of this and removed his oft tossed about badge from under Nancy's days it will be before this many days it will be before this whole thing is settled?

Broken romances

are popping up here and there despite the fact that spring is supposed to take care of little things like quarrels etc. Kappa Betty Bongardner and AGR Maxton Laughlin are not getting along as smoothly as might be expected from consideration of the solid

dating which has been taking place. Tho this is not definitely on the rocks, rumor has it that vacation will settle the whole thing one way or another.

Budding romances

are more the usual thing this time of year and we pause to note one couple who haven't called it steady or anything, but they surely do see seem to be having a good time together... Pi Phi Margaret Owen and George McMurtrey.

Romance in the rain

between DeeGee Pat Knuth and Sigma Nu Ken Ebzrey who were seen in a long conversation on the street corner with no apparent regard for the rain which sent the rest of the student body scurrying for cover.

is used to decentralize industry throughout the country.

"A change in the rate situation, however, is not a panacea for the problems of the Mid-Interior and the South," Lilienthal concluded. "We must be ready with industrial knowledge generally, with skills, and the backlog of industrial research upon which modern industry so greatly depends.

"The South and West could well join hands in preparing and presenting the case for I believe that you will find their fundamental interests the same."

J. A. Little, director of transportation for the Nebraska State railway commission, has called two meetings dealing with practical aspects of the problem discussed at the transportation conference. The meetings will begin today.

In the evening session David E. Lilienthal director of TVA, told members that the industrial future of the Midwestern interior and the Southern regions of the United States depends upon restoring economic equality between all regions of America, conservation of human and natural resources, and fullest development of power and water assets.

"Man-made rules and not the limitations of nature are responsible for acute economic problems in both our regions," Lilienthal stated. "The interterritorial freight rate structure is one of the major causes of our inability to develop our resources to the fullest measure.

"In many respects the Mid-Interior is faced in the early stages with some of the very conditions which in their later and acute stages we find in the south today," he explained. "The tenancy rate here is not nearly so high as in Georgia, Alabama, and Mississippi, but the alarming thing is that it is increasing rapidly.

Southern, northern problems.

"The draining of our human resources from both these regions is another grave problem in common... But the chief similarity between your problems and ours in the South lies in this: that we are both lacking in an adequate industrial development to balance our reliance upon agriculture."

Industrial development has lost ground in the mid-interior in the past generation, Lilienthal believes. If Nebraska had grown industrially as fast as the whole nation did from 1909 onward, its manufacturing income in 1939 would have been 70 million dollars greater, or double what it actually was, he said.

The speaker showed charts illustrating how freight rates are higher in all parts of the country than in eastern or official territory. As an example of how this works against this territory, he pointed out that a 10,000 pound order of shoes in Mansfield, O., can be shipped there much cheaper from Brockton, Mass., than from Topeka, Kas., altho the distance in rate miles is the same. A Topeka company would have to pay 40 percent more for the same distance.

Martz, Segrist judge Jones' theatre contest

From the Jones boys and girls who enter the contest being sponsored in connection with the Lincoln premiere of the "Devil and Miss Jones," judges Clyde Martz, DAILY editor, and Ed Segrist, DAILY business manager, will select seven Joneses and one pair of Jones twins, (if any enter), to be the guests of Jean Arthur, star of the picture, at a dinner party before the premiere.

Contestants must have Jones for their last name, must be a regular student at the university, and enroll with A. W. Hendricks at the Varsity theater before tomorrow night.

The judges will select these individuals, to whom Miss Arthur will be hostess by remote control, tomorrow night after the contest closes. They will choose the tallest Jones; the shortest Jones; the Jones with the best scholastic standing; the Jones who came the longest distance to enroll; the most freckled Jones; the best Jones athlete, and the prettiest Jones twins.

Professor writes article

Prof. Linus Burr Smith, chairman of the architecture department, has written an article describing the philosophies underlying the teaching in the department which appeared in the February issue of the Octagon, journal of the American Institute of Architects.

UN art gallery . . .

Painting to appear in South, Central American exhibitions

. . . this year

A picture selected from the university art galleries will be included in an exhibition of contemporary American painting to be sent to ten leading cities in South and Central America this year, according to a request received by Prof. Dwight Kirsch, chairman of the art department.

Health-

(Continued from Page 1.)

all countries in the world in scientific knowledge and technical development of medicine, it lags in the social organization by means of which this knowledge can be made available to all the people who need it," she added. This situation is especially apparent in a rural state such as Nebraska where good medical and hospital services are frequently not available and where, because of long drouth years, there has been serious delay in the development of public health services to protect the peoples health.

Miss Anderson has come to Nebraska with a wide background of experience. A native Canadian, much of her training and experience has been carried on there. Rural health, social research, race relations and labor problems are her fields of major study and experience. Her book, "We Americans," which is a study of nationality groups in Vermont, won the John Anisfield award as the best book on race relations in 1937.

The exhibition is being prepared by the advisory committee on art in the Washington office of the co-ordinator of commercial and cultural relations between the American republic, all under the council of national defense. The committee has asked the university for a loan of "Afternoon Skiing" by Zolton Sepeshy.

Cities to which the exhibition will be sent from April to December are Havana, Rio de Janeiro, Montevideo, Buenos Aires, Santiago, Lima, Quito, Bogota, Caracas, and Mexico City.

Cultural exchange program.

"This project is the initial understanding of a broad cultural exchange program in the visual arts between the American republics, which we hope will begin a new era of close intellectual understanding between the North and Latin American peoples," states John E. Abbott, chairman of the advisory committee on art.

Pictures for the exhibition have been chosen by the curators of American painting in the Metropolitan, Whitney, and Brooklyn museums, and the Museum of Modern Art under the direction of Mrs. Helen Appleton Read. A handbook in Spanish and Portuguese will accompany the exhibit.

Bulletin

KOSMET KLUB.
Kosmet Klub activities will meet Wednesday at 7. Kosmet Klub workers will meet today at 5.

EVANGELICAL STUDENTS.
The League of Evangelical Students will meet today at 7:15 in the Union, room 315.

DANCING CLASS.
Beginning dancing class meets tonight in the Union ballroom at 7. Advanced dancing class will meet this Thursday. The next meeting will be the first Thursday after vacation.

CORN COBS.
Corn Cob activities and workers will meet in room 315 of the Union at 8 p. m. today.

AG WAA.
Ag college WAA will meet today in student activities at 5 p. m. Archery will be the activity.

AG RECREATION.
Ag college recreation night will be held tonight in student activities at 6:45 p. m.

CHARM SCHOOL.
Charm School meets in Ellen Smith hall at 7 tonight. Linus Burr Smith will speak on "Growing Up."

Transport-

(Continued from Page 1.)

than the system that permits operators to use improved waterways without payment of tolls to profit by lower rates thus made possible."

As for what transportation agencies ought to do for themselves in the future, Palmer advised that they "be more aggressive than they have been in pressing for legislation in their own and the public interest."

Eastern purchasing power.

Purchasing power in official territory, in the industrial region east of the Mississippi, is greater than that of all the other territories put together, Lilienthal pointed out. This means that the largest national market is concentrated there and industries in other regions must sell a part of their output there if they are to have a strong development.

But, he continued, under the present freight rates, producers here must pay a higher rate than manufacturers in eastern territory who are actually farther away from many of the markets.

The present industrial expansion in connection with the defense program will influence the economic pattern of the United States for many years to come, the speaker said, and the nation will lose out unless defense production

LOOK AROUND YOU AT THE BALL PARK

...you'll see the clean white Chesterfield pack on every side

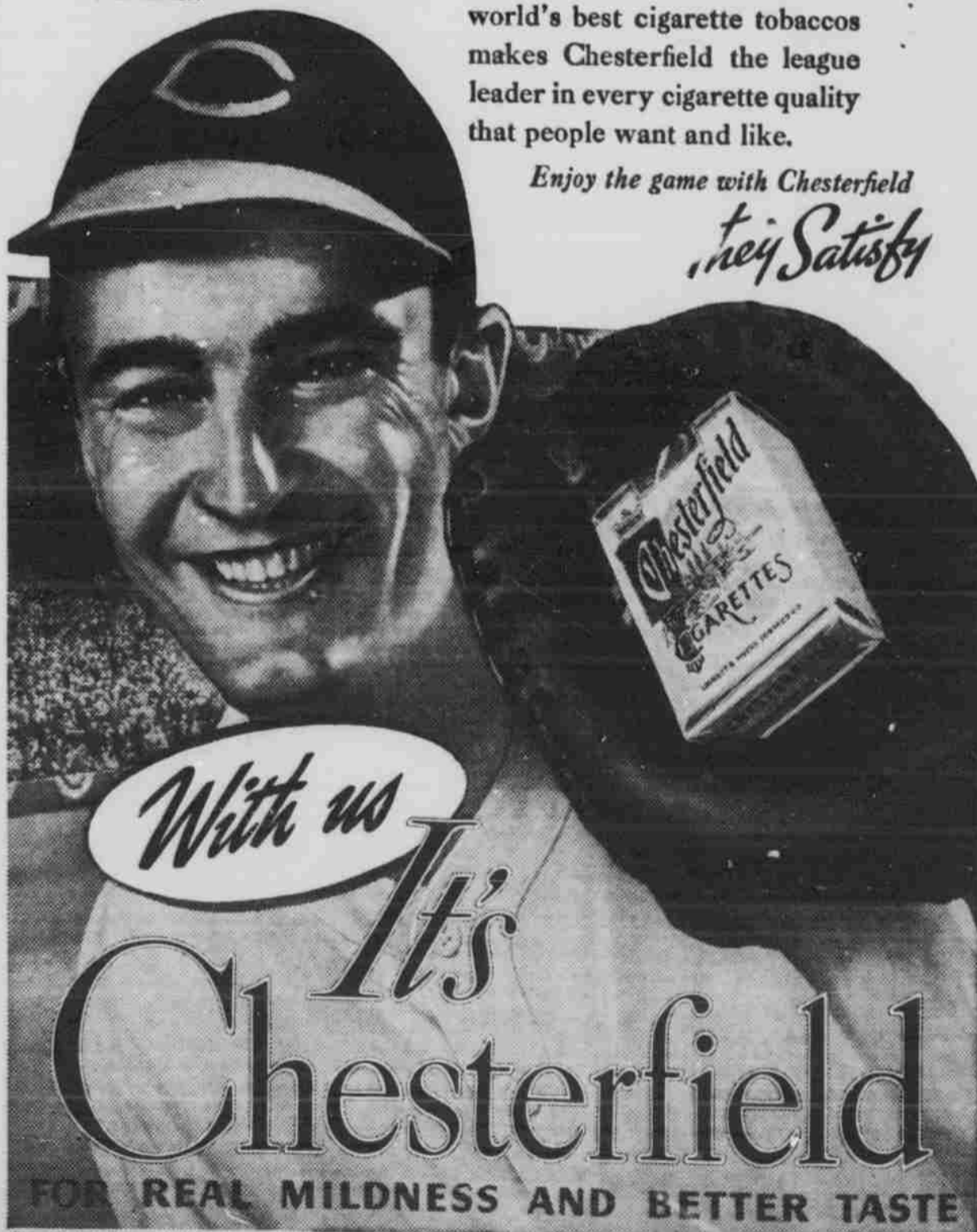
Every smoker who enjoys a Cooler smoke that's definitely Milder and Better Tasting is a Chesterfield fan.

The can't-be-copied blend of the world's best cigarette tobaccos makes Chesterfield the league leader in every cigarette quality that people want and like.

Enjoy the game with Chesterfield

they Satisfy

FRANK McCORMICK
star first baseman
Cincinnati Reds.



EASTER GREETING CARDS

For—Family—Sweetheart—Friends

Eastman Kodak Stores, Inc.

1221 O Street