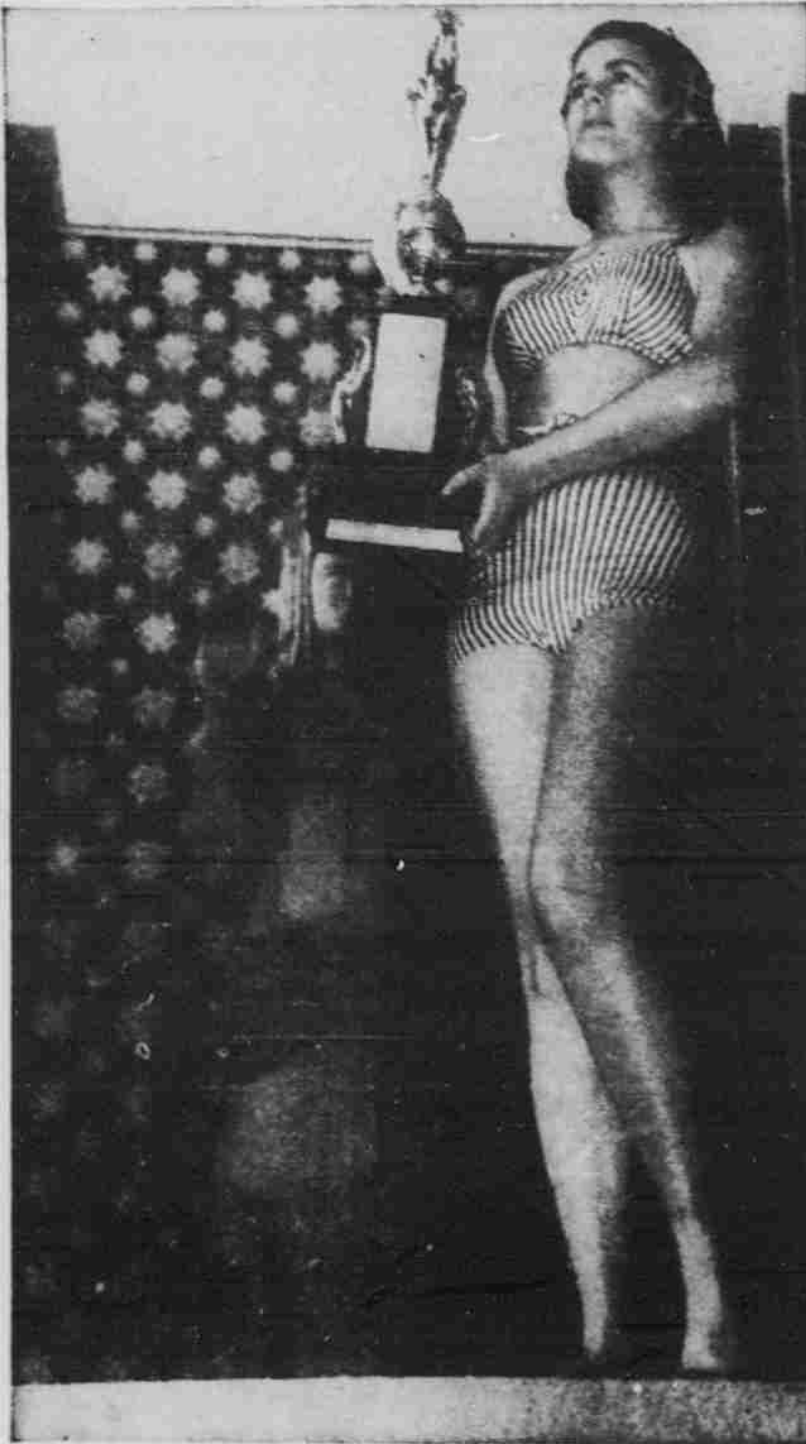


Statuesque Fair Beauties. San Francisco takes 'Pageant of Pacific' as exposition theme



Standing in front of the 80-foot statue of Pacifica, who looks out over the Court of Pacifica and down the Court of the Seven Seas, is Tanya Widrin, Exposition beauty. She is displaying the gold trophy to be awarded the winner of a California beauty contest.

Shall we travel?

As the American student population prepares to leave school for another carefree summer, and as American business men and housewives scan their budgets with eagle eyes, the attraction of the two magnificent world's fairs being held this summer in New York and San Francisco serve as powerful magnets directing summer travel.

Set in a land of glamor and amour, the picturesque San Francisco exposition is utilizing all the drawing power of beauty—scenery, of buildings, of music, of women. In the backyard of Hollywood, the Fair seeks to dazzle its visitors with a fascinating show that will leave nothing undone in the realm of entertainment.

The Elephant Towers at the Golden Gate Exposition are as high as a 12-story skyscraper, and equal in area at the base to a full city block.

Visitors to the World's Fair of the West will be able to spend 10 hours a day for 12 days and still not cover completely the vast number of free exhibits.

Sixteen elephant trains running at 10-minute intervals will provide transportation around Treasure Island to all who come to the Golden Gate Exposition in San Francisco Bay.

Of interest to all stamp collectors will be the new 3-cent stamp issued by the government to commemorate the Golden Gate International Exposition.

Fluorescent tubes, a new discovery in illumination, have been used extensively in the million dollar lighting program on Treasure Island.

Using new directional antennas, the General Electric radio station on Treasure Island in San Francisco Bay, will have power equal to 200,000 watts.

Gardens in the \$2,000,000 walled Chinese Villages in the Golden Gate International Exposition are presided over by a statue of Kwan Yin, goddess of mercy.

Fair Premiere Queen



Miss Audrey Anderson of Oakland, Calif., took the trophy awarded for beauty in a California World's Fair contest to select the Queen of the Premiere Festival. Here Miss Anderson is presented with the trophy by Leland W. Cutler, president of the Exposition on Treasure Island, at a formal reception.

Off To See 'Cavalcade' At Fair



Mayor Angelo J. Rossi (right) of San Francisco, accepts a fancy invitation to see The Cavalcade of The Golden West at the California World's Fair and in an ancient equipage heads for Treasure Island. The Cavalcade, condensing 400 years of romantic Western history into a little more than an hour, presents a swift moving drama that has fascinated thousands of Exposition visitors. Driving the auto, one of the Cavalcade 'props', is Tom Sharkey, former contender for the world's heavyweight title, an actor in the show, while in the back are "girls of the gay 90's."

Huge Motor of Clipper



Looming overhead is part of the wing and one of the four motors of the 74-passenger Clipper Ship of Pan-American Airways in the Port of the Trade Winds at the California World's Fair. In the background is part of the Palace of Air Transportation and the 400-foot Tower of the Sun. Notice size of the huge craft compared with the crew on the landing float.