

Mingling with Marg

And now we bake thru a few more weeks of school . . . with every minute counting as exams rear their ugly heads . . . but to deviate from the reality of college and go to the romance, we might mention some of the recent pinhangings . . . for Kappa Joan Lyman is now wearing the Phi Delt pin of Ben James . . . and Theta Janet Smith has the Phi Psi pin of Carl Ousley . . . and along the steady vein we might mention DU Avery Forke and Alpha Phi Dorothy Askey . . . add to that a certain Sigma Nu and Pi Phi Deal which will be revealed later . . . the "No-go" list increases as we add the names of DU Bill Niehus and Kappa Jean Humphrey; and Pi Phi Betty Sherwood and Beta Leon Davis . . . and those who claim to be on the "never go" list are DU's Ed May and Leonard Dunker, who would just love to get a smooth date for sometime soon . . . and to bring the collegiate trick of tricks . . . At last it has hit the Nebraska campus that goldfish diet you've heard so much about . . . it all took place when Kappa Sig Bob Ray bet Fred Harms, Kappa Sig too, that he'd be scoured to eat 'em . . . and Fred the Nibbler took the bet; is still quite well . . . and among other big parties this week end . . . saw Ruth Grosvenor and Ed Keating; Grace Leader and Bob Rudameyer; Betty Pierce and Joe Johnson; Gloria Hansen and DU Joe Stevens; Madeline Hendricks and Bob Krause, Sigma Nu . . . and so go the parties of last week end . . . and in preparation for next week's fun, the gals in the Orchisis recital are dashing around getting their costumes ready for the Saturday

recital . . . and today is the day of the Neihardt convocation . . . Marriage announcements are the big thing what with June just around the corner . . . Chi Omega Margaret Munger announces her marriage to Dr. Woodrow Berge to take place on June 11—he was a PiKA when he was in school here . . . and the marriage of Delta Gamma Margaret Werner to Xi Psi Phi Orval Kildebeck will take place June 25 . . . Ruth Mary Jennings, Alpha Chi, will be married to Frank Landis, Sigma Chi, on June 11 . . . Ruth Dobson will be married to Dale M. Johns the first week in June . . . Formal initiation of Sigma Alpha Mu was held Saturday and the following men were initiated: Stanley Mayper, Melvin Tannenbaum, Norman Green, Ben Novicoff, Max Prostak, Morton Margolin and Phillip Bordy. At the 25th anniversary celebration of Omicron Nu, honorary home economics fraternity, these girls were initiated: Maxine Armstrong, Willene Lager, Marjorie Farrar, Lois Hammond, Esther Harsh, Peggy Sherburn and Marion Wilson.

Ag social council sponsors Friday party

The ag college social council will sponsor the ag "Y" nite party at the downtown Y. M. C. A., Friday, April 28 at 8:30 o'clock. Entertainment for the evening will consist of swimming, dancing and roller skating.

Bob Wilson, is chairman in charge of entertainment with Ruth Ann Shelton and Milan Ross serving as co-chairman.

BULLETIN

All Tassels are required to wear full uniforms today advertising their sale of tickets to the Rubino concert on Ivy Day, May 4.

There will be a meeting of Pershing Rifles at 5 o'clock this afternoon in front of Nebraska hall. The individual competition for this spring starts at this drill. All riflemen should be present. Preparations for the interplatoon drill will also get under way.

A meeting of Phalanx, honorary military fraternity, will be held at 7:30 tonight in the Union. All members are requested to be present.

Band members will attend their annual banquet Wednesday evening at 6:30 in the Union. Tickets are being sold until 6 o'clock Tuesday by members of Gamma Lambda.

Vestals of Lamp initiates 17 girls

A & S honorary holds induction, reception

Vestals of the Lamp, arts and sciences honorary for women, initiated seventeen new members Sunday evening at a ceremony in the Union. Following the initiation a reception was held in the home of Mrs. George Rogers.

The initiates were Faith Medlar, Jean Carnahan, Dorothy Swisher, Nan Talbot, Harriet Talbot, Harriet Wood, Gertrude McArthur, Marian Cramer, Betty Meyer, Barbara Beerman, Lucille Thomas, Miriam Rubnitz, Peggy West, Flavia Ann Tharp, Dorothy Faulkner, Jeanette Swenson, and Patricia Sternberg.

Tess Casady is the newly elect-

ed president of Vestals of the Lamp and Mary Ellen Osborn is secretary-treasurer.

Presenting—



The Fellow With A Date To The

ENGINEERS' BALL

DANCING TO THE SO. GENTLEMEN

FRIDAY, APR. 28

\$1.00 per couple

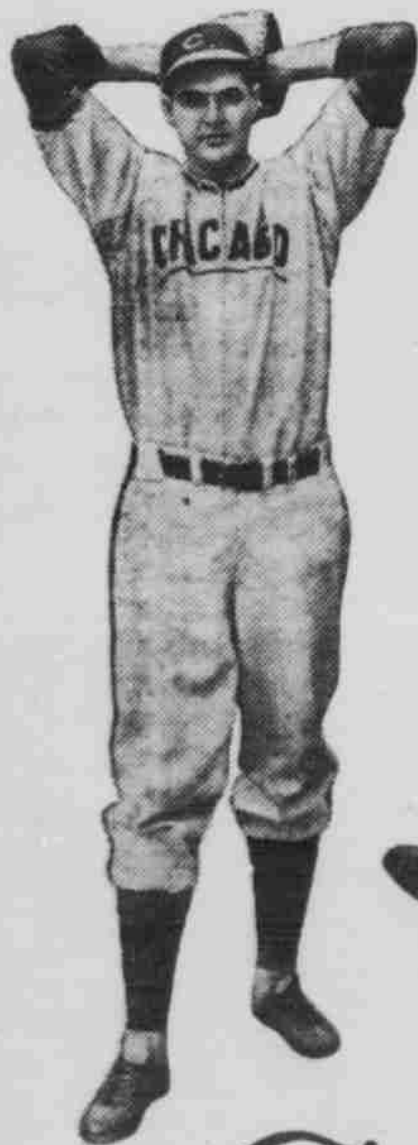
Tickets on Sale at STUDENT UNION OFFICE



Outstanding Combinations

BIG BILL LEE, outstanding for his combination of burning speed, control and games won,

and **CHESTERFIELD,** outstanding for its can't-be-copied combination of the world's best tobaccos.



Chesterfields' can't-be-copied blend makes them outstanding for refreshing mildness... for better taste... for more pleasing aroma... outstanding for real smoking enjoyment.

When you try them you will know why Chesterfields give millions of men and women more smoking pleasure... why **THEY SATISFY**

Chesterfield

The RIGHT COMBINATION of the world's best cigarette tobaccos

They're Milder... They Taste Better

BIG BILL LEE

Pitching Star of the Chicago Cubs. An outstanding pitcher in the National League.