

We're in the mood for Spring and store windows intrigue us. So we go window shopping and "aisle-counter" shopping, but we don't buy anything yet...

Perfume for a Lift. To get us in the mood to shop around for the quick change things that spell "Spring" we stop in first to sniff around for a new perfume scent to match our mood.

and in their place have come the light floral scents... violet, lavender, carnation, honeysuckle, lilac. Cologne is becoming more and more popular...

Blended Accessories are Musts. We like the counter displays that blend perfumes, purses, gloves, handkerchiefs, and buttons...

We really don't intend to start backwards in our buying or even looking, although we did when we looked at accessories first.

Hats As You Like Them. With all the hue and cry for matched accessories, we have often wondered why we couldn't have hats made to order here in Lincoln at a reasonable price...

Daytime Dresses Up Two Points. Daytime dresses are short, 14 to 17 inches, even shorter than last year. But you must consider your figure, your height, and the shape of your legs before determining the length of your dresses.

P. S. Our secret ambition is to own one of those very smart and ultra slung a nabags that hang down on a strap from the shoulder and have a resting place for your hand to tuck in at the side.

## Sport Togs Set Pace for Attire of College Men

Color is galloping five lengths in the lead of the spring fashion race leaving plain navy blues, blacks, and browns in the dust. As men's clothes approach the spring lap, colors have become the long shot of the day.

For suit materials, the betting is heavy on herringbone for suits and sport jackets also made of light weight fabrics of Palm beach cloth, Bermuda cloth, Congo cloth and gabardine.

Another combination for the campus is a dark blue, box check sports jacket worn with gray slacks. The shirt is gray with a blue vertical stripe worn with a harmonizing blue tie.

Nets to You, as Lace Reappears. Romance is the trend in spring formal fashions as evidenced by bodices fitted and fancy, by skirts full and gauzy, and by shirtdresses with ruffles and ruches.

Waistlines Lengthen. The long waistline is another of the leading trends in evening fashions, and one that is strong in collections. Paris gave the lower waistline generous endorsement.

Lace Decorations. An evening style of more interest to American universities is the revived chignon and lace dinner gown. Most of them are short-sleeved shirtwaist types, with the lace of matching black, dark blue, or white to the chiffon, which may be pleated and which makes the dress with the lace always delicate and sheer.

Daytime Dresses Up Two Points. Besides the one piece version of the lower waistline, there are others in two piece forms, frequently without a belt and frequently suggested in double belts and bands, in embroideries and seamings and indraped girdles.

Gibson girl effect dress with an adaptation of the Mexican sombrero. The bolero costumes are used in late spring and early summer. Some of the tiny jackets are fitted zipping or buttoning up the front. The dress might be a short sleeved dark blue wool, maybe checked in a tiny plaid, or a small dark print design.

## Nebraska Males To Go in Green

Store clerks say Nebraska men have gone green conscious. For suits, green is the popular fancy either in herringbone or gabardine. Herringbone is found in self or two-tone fabrics, and the new note is for the stripes to run diagonally instead of vertical.

Mixed suits are rapidly catching popular interest. The models are simplified and the accent is color. Jackets are three buttoned with a roomy chest, plain back, and center vent. Or backs may be loose and comfortable with full bellows pleats, pinch backs, or the belted with pleats style.

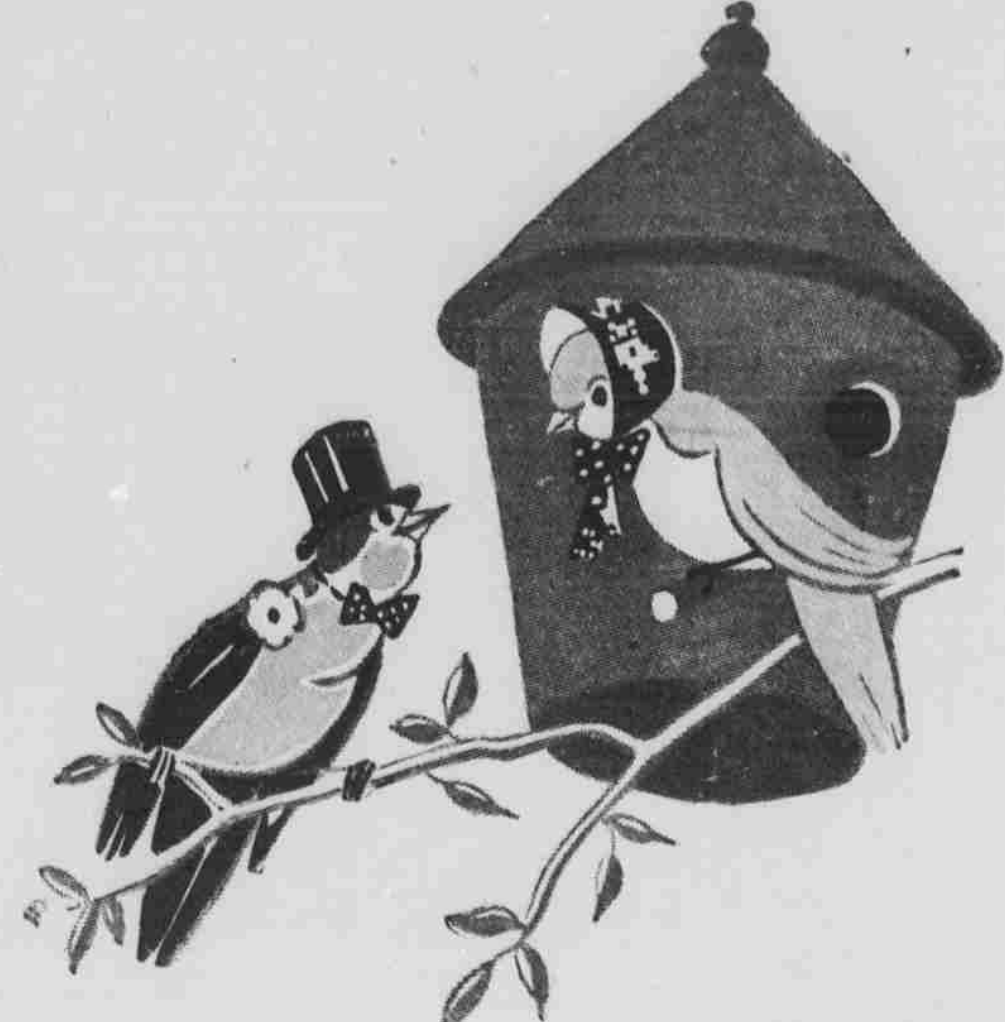
Men Seek Comfort. Slacks are also being designed to insure more comfort. The knee is full, there usually being a four inch difference between the knee and the smaller cuff. The front is pleated to the outside. When the slacks contrast with the jacket, they are usually gray, but self weave trousers in small herringbones of a lighter tone to match the jacket are also being sold.

New Spring Sport Shirts Go African. Wearing sport shirts outside your trousers is the newest suggestion from Monsieur Fashion. They're vastly more comfortable and cooler for the humid summer air.

Sombody could get rich selling cotton stockings if he would advertise them thus: "Cotton stockings are more durable, economical and comfortable than stockings made of silk, but they are not flattering. They are recommended only for girls with trim and shapely legs."



Gibson girl effect dress with an adaptation of the Mexican sombrero.



Spring is a new way of looking at things... fashion is a point of view on spring. Styles are meant to be adapted, not copied.

## The Whole World Cooperates to Produce 'Feminine Fluff'

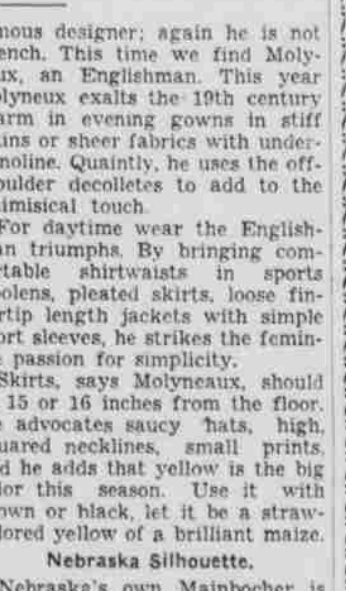
If you've the idea that Paris fashions are truly Parisian, delve with us into the lives of today's designers and become one of the "knowing" persons. For although "chic" and "Schiaparelli" seem to be just too French, you may be surprised to learn the true facts.

Italian Boleros. The clothing novelty of this season is the bolero and snail set, for which Schiaparelli is partly responsible. She also brought the Chinese effect to evening wraps by designing the long, slit sleeves and straight back lines.

English Evening Gowns. Again we turn to a world famous designer; again he is not French. This time we find Molyneux, an Englishman. This year Molyneux exalts the 19th century charm in evening gowns in stiff satins or sheer fabrics with undercrinolines.

Pat Prime, who is modeling for the Coed Pollies, has a matching coat and dress of dusty blue, the coat is trimmed with a white fox collar, she shoes, hat, gloves and bag are parisienne.

When she is seen at the T. P. in an English tweed walking suit of brown, yellow and beige... Here is one of the new plaid sport jackets that are so popular when worn with plain colored skirts for campus attire.



Finger-tip bright plaid box coat worn with the pill-box hat.

A YEAR FOR EARS. Ears have come into their own. Dame Fashion this year features dramatic jeweled clips to outline the natural curve of the ear.



When she is seen at the T. P. in an English tweed walking suit of brown, yellow and beige... Here is one of the new plaid sport jackets that are so popular when worn with plain colored skirts for campus attire.

Those Delta Gamma favorites, Betty Mumford and Margaret Krause choose matching jackets and skirts in contrasting colors. Navy and British-tan... Hokie Weaver, Alpha Chi, favors slate blue and raspberry which she wore last week-end to the S. A. E....



Finger-tip bright plaid box coat worn with the pill-box hat.

A YEAR FOR EARS. Ears have come into their own. Dame Fashion this year features dramatic jeweled clips to outline the natural curve of the ear.

Mary Anna Cocker is the first to introduce the little dwarf caps from "Snowwhite" she has a belt of matching red suede...

When she is seen at the T. P. in an English tweed walking suit of brown, yellow and beige... Here is one of the new plaid sport jackets that are so popular when worn with plain colored skirts for campus attire.

Those Delta Gamma favorites, Betty Mumford and Margaret Krause choose matching jackets and skirts in contrasting colors. Navy and British-tan... Hokie Weaver, Alpha Chi, favors slate blue and raspberry which she wore last week-end to the S. A. E....

## Brilliant Colors Liven Milady's Spring Outfits

Hosto manjuana! Look what's here! Bolero's, sombrero's, loud colors, and hierarches. That little glamorous and colorful country below the Rio Grande is going to influence the smart wardrobe of the campus coed this spring.

## Suits to Match Female Whims

The suits the thing...to suit. In the portfolio of the Paris designers suits are colorless trimmed with grotesque ribbon, buttoned at the waistline, always pleated, softly tailored like the school-girl's, and often times trimmed in fur.

Pleats Are The Rage. Short, short bolero suits with front pleated skirts, below the hip jacket with the new tapered drape silhouette, the hip-length pleated jacket, a reefer suit, and the finger-tip length furred, and the tuxedo suits are being shown in the best on 5th Avenue. Never forget the saucy boxy swaggers still hold a certain amount of prestige.

Pigskin Is Back, But to Remain? Perforated for coolness, two-toned for contrast, Men's shoes are slowly becoming more individual as shown by the new natural colored pigskin trimmed in brown, but the conventional oxford with wing tips, straight tips, bluchers, French toes still lead sales.

Familiar College Male's Plaid Top Coat. In suits and coats tweeds, flannels, and tailored plain material. Gabardine is holding its own in suits that are man-tailored.

Clever Doodads Perk Up Suits. Here are some tips for the girls who like to wear those silly added doodads which make old things look new and excit...



Here are some tips for the girls who like to wear those silly added doodads which make old things look new and excit... Try button-down blouses, try colorful buttonholes... wear bright gloves of cherry red, copper, turquoise, or olive... tie your navy blue sport oxfords with British tan laces to match the heels and soles... wear the striped ankle socks which are slit down the front... make an interesting job of wearing a dirndl blouse... add peasant caps and matching girdles to your accessories... take time and tack three or four... panies or velvet or gauze and tie them round your wrists...