

Society

SEEN ON THE CAMPUS.

A merry group of Sigma Nu's at the Sigma Delta Tau formal playing a little game in one of the few unslick corners that looked like ring around the rosy. Betty Hillyer and Ernie White wearing the spectators every time they went into the one and only Falls City hop. It may be a game but Elaine Krieger and Grant Thomas just can't seem to decide just which one is going to wear the Sigma Chi pin, one day she has it and the next day it's Grant's again. The last Awgwan was just a little wrong in suggesting that Mary Margaret Mailey has an interest in Bob Zoesch if the fact that she is wearing Harry Haney's pin is any indication. Bill Newcomer at the afternoon performance of the Players insisting that there is no need for more than one show a day when not even the combined audiences fill the house. The boys feeling very comfortable at the Alpha Chi party in their cords and the girls almost too cool in cottons. Surprise to see Joyce Kovanda deserting her faithful Chi Phi and seemingly having a super fine time with Milo Jensen. Dear little Marjorie Beal with Webster Mills spending a quiet evening playing bridge at the Sig Alpha house.

D. U. Alumni Direct Initiation for 15.

Under supervision of Lincoln and Omaha alumni, the Delta Upsilon's initiated 15 into the active chapter Saturday. A banquet at the Cornhusker followed initiation at which Dr. Rodney Bliss of Omaha, charter member, and Arthur Danielson, Lincoln alumnus, were the principal speakers. A closed house party was held at the chapter house after the banquet. Carl Norden was in charge of all arrangements for initiation. Those initiated: Dale Ganz, Alvo; Richard Young, Mitchell, S. D.; Frank Sawyer, Torrington, Wyo.; Harry Prouty, Detroit; Leonard Dunker, Lincoln; Paul Munson, Osceola; Robert Nelson, Omaha; Ralph Reed, Lincoln; Kenneth Drake, Randolph; Robert Bailey, Lincoln; Ralph Tyler, Lincoln; Jim Williamson, Albion; Lester Bursik, Ravenna; Max Lake, Lincoln; and Robert Lipscomb, Nebraska City.

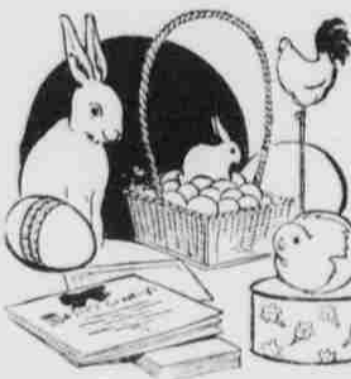
Phi Gam Initiation Held in Omaha.

The Phi Gamma Deltas went to Omaha Saturday where they held initiation at the Paxton hotel. The Phi Gam initiation is held annually in Omaha.

Announce Engagement Of Former Student.

Miss Betty Paine, former student at the university, announced her engagement to William P. Logan of Omaha at a luncheon Saturday at the Cornhusker. The wedding will be an event of early June. Miss Paine is a member of Alpha Omicron Pi.

EASTER



Seasonal Gifts Cards

Symbolical of the Easter Season are here in Varied Profusion, for all "Present" Purposes, in all attractive forms, and at

Most Attractive Prices

Useful and Pretty Souvenirs for YOUNG or OLD, of Either Sex, the Sentiment that Donors Wish to Convey.

Wish to Convey. NEBRASKA STATE FLAGS Several Sizes

George Broc
PRINTERS—OFFICE SUPPLIES—ENGRAVERS

The Wedding Stationers
Tel. B-1313 1215 N Street

1776 HIGH SCHOOL SENIORS TRY FOR REGENTS AWARDS

All-Time Record Number of Students Compete for N. U. Scholarships.

An all-time high of 1,776 high school students from over the state will compete for university of Nebraska scholarships which again will be made available for all colleges in 1937. This represents an increase of 483 students as compared with figures of a year ago. According to statistics from the university extension division, 420 Nebraska high schools will be represented as against 410 in 1936. To date approximately 800 students have availed themselves of the regents' awards, this being the sixth year scholarships have been made to high ranking graduates of secondary schools. Each school is allowed at least two contestants who must rank in the upper quarter of their graduating class.

Examine Contestants.

Winners of the awards will be chosen on the basis of grades received on five different examinations, which include a classification test in English and a psychological test required of all students entering the university. Part of this test will also be scores separately as a reading test. In addition, regents' contestants will be given a second psychological test and an English composition examination. These are scheduled for April 12 and 13.

Special Algebra Test.

An algebra classification test will be taken by those who plan to enter the college of engineering, although this quiz will not be considered as one of the basic tests when awarding scholarships. A group of 6,341 students in the high schools will take the psychological tests this spring, 6,739 the English exams, and 2,194 the algebra tests.

Of the 250 regent scholarship winners awarded in 1935, 235 of them are in school at the present time. These freshmen scholarships amount to about \$35 for the first semester. If the student's work is satisfactory, the award is granted him for the second semester.

Delegates Entertained By Alumni Chapter.

Delta Gamma alumnae entertained at a luncheon Saturday at the University club. Guests were delegates to the province convention and out of town alumni. Seventy members were present. Following the luncheon the group met for a short meeting at the chapter house.

Sigma Nus Hold Initiation.

Sigma Nus initiated 14 at the ceremony held Saturday. The banquet following initiation was given in honor of the new initiates. Members of the active chapter and alumni attended the dinner and ensuing house party. Ted Bradley, commander, was toastmaster. The fraternity colors were used for decoration of the chapter house.

Banquet Follows Initiation.

Chi Omegas held initiation Saturday evening, beginning at 5 o'clock for nine initiates. A banquet given today at the chapter house honored the new initiates.

Alpha Chi O Gives Cord and Cotton Party.

Alpha Chi Omega entertained at the chapter house Saturday night at a Cord and Cotton Party. Decorations carried out the cord and cotton theme. Chaperons were Mrs. J. W. Bishop and Miss Rhona Smith and Miss Imogene Steinmeyer.

CLASSIFIED ADVERTISING
—10c PER LINE

LOST—Parker desk base for fountain pen. Left in the P.C.A. office at Temple Theater. Finder please return to the Daily Nebraskan Business Manager. Reward.



Campus CAPS and GOWNS

YOU'VE HEARD ONLY TOO OFTEN OF THE CONTRAST

between romanticism and realism—but now it's being applied to the costumes in your spring wardrobe. Paris says—and Paris knows—be a realist by day and a romanticist by night. This means that you must appear in the sun with a suit, natural as to lines, a pastel shade as to color. It means that in the moon-light you must appear as Anna Karenina might have—perhaps in a black moire bodice, tulle skirt, and pink tulle scarf. It means that while you wear a sky-blue coat over a wine-red dress to make your morning calls, you must adorn yourself in the night-time in a flowing chiffon, wrapped with an alluring lace cape. It indicates, even, that if you choose a new fuchsia-pink jacket and a navy-blue dress for Easter morning, you must reserve a sentimental striped evening dress, made with a bodice and little black velvet bows.

FLATTERY FOR EASTER.

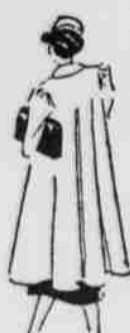
A completely new collection of newest spring styles. All types, all colors. \$1.98, \$2.49, \$2.98. VERA'S HAT SHOP, 116 North 13.



Courageous color seems to be the keynote of spring fashions. That accounts for the fact that Mary Janice Meneary is adding a horizon-blue sweater to her new suit with its incredibly soft pink tweed jacket and its navy skirt.

Since color is, oh, so important this season, the Evans Cleaners are taking special care to make their dyeing process as successful as possible. If you're costume lacks that little something, why not let Evans change the color of some part of it—just to brighten it up? Call B6961.

In a coronation blue silk dress that fits to perfection and swings in a pleasing circular manner, Margaret Jane Pyle is the essence of all that's new in the spring. The dress is trimmed with old rose embroidery and a sash of the same color. She sets a blue sailor hat with an old rose streamer on her dark curls.



Eavesdropping a little, perhaps, but it seems that Kermit Hansen, Beta, and Thurston Phelps, Phi Psi, get together at the drug to discuss Jane Bell, Kappa, their mutual friend.

If the dust storms weren't as beneficial to your clothes as they are supposed to be to the soil of Nebraska, let SOUKUP AND WEST-OVER'S MODERN CLEANERS take out that excess Texas dust

FOR THE FINEST
DANCE MUSIC
CALL THESE
UNION ORCHESTRAS
ORGANIZED
UNION BANDS
Members of Lincoln Musicians Association
L. T. Raughan, 1950 Jefferson, F4334, B3389
Beck-Jungbluth, 2925 So. 25th, 130 S. 25th, F2368, F2704
Clvdo E. Davis, 624 S. 350 St., F4652
Gaylord Felstner, 310 N. 25th, B2861
Earl Hill, 2125 N. St., B5421
Dave Haun, 903 N. 9th, B2008
Mel Preater, 2640 N. 57th, M3717
Ed Sheffer, 2723 Everett, F7452
Jim Simons, 600 So. 30th, L7756
Bob Storer, 1807 O St., F2686, L4380
Jerry Winter, 2228 Que St., L6097

OR THE
LINCOLN MUSICIANS ASSN
222 NAT. BK. (COMMERCIAL) B-4966

Y. M. C. A. CABINET OFFICERS TAKE OVER NEW DUTIES FRIDAY

(Continued from Page 1.)

pective duties are as follows: Fulton Gantt, retreats; Dick Kerlin, freshman work; Erle Constable, meetings; John Steinhaus, personal relations; Dan Williams, field council; Elmer Horstman, Bible study; Lloyd Swanson, N book; Fred Harms, publicity; Howard Wright, deputations; Ed Ewart, conferences; Bob Fishback, peace action; and Bob Behricker, Estes co-op.

Howard Wright, retiring president, presided over the meeting which preceded the installation ceremony. Following the ceremony, the new president, Dan Williams, took the chair and called upon the new cabinet members for brief statements regarding their activities and the work for which each is responsible.

Dr. D. D. Whitney and Mr. M. A. Hyde, members of the university Y. M. C. A. advisory board, read the installation ceremony.

FRANKFORTER TO TALK ON OIL REFINING TOPIC

(Continued from Page 1.)

Gamble company at Kansas city, Kansas, Col. Frankforter may also briefly discuss the chemical process involved in the manufacture of soap tomorrow night in conjunction with the latter inspection.

Other companies to be visited by the group on the trip are Frank Paxton Lumber company, Kansas City, Kansas; Cora Refining company, Cook Paint & Varnish company, Kansas City Water Works, Kansas City Power & Light company, and American Can company, all in north Kansas City, Missouri; Chevrolet Motor company, Loose Wiles Biscuit company, Sheffield Steel corporation, all in Kansas City, Missouri; and the Kansas City Structural Steel corporation, Kansas City, Kansas.

Economical Students Take Their Cleaning to **BILL CRITTENDEN** And Save 10% by Cash and Carry **UNI CLEANERS** 211 No. 14th B5253

"Your Drug Store"
Drug Store Needs at the Right Price
35c Brome Quinine 25c
60c Alba-Selzer 49c
49c Brome-Selzer 30c
25c Listerine Tooth Paste 19c
35c Vick's Vapo Rub 29c
75c Listerine Antiseptic 59c
50c Ipana Tooth Paste 39c
You will enjoy our fine Box Chocolates.
Noon lunches at our New Fountain
The Owl Pharmacy
P. St. at 14th We Deliver Phone B1068

RECAPTURE THE Thrill of Newness in Your Favorite Evening Gown
Your evening gown never becomes drab and uninteresting when you depend on EVANS fine cleaning. Methods . . . individually suited to the fabric and style of your gown actually re-creates it . . . restores its glamour, luster and drape . . . to give you many successful evenings.
Expert Launderers **The Evans** B6961 Responsible Cleaners
333 No. 12—Convenient for Cash and Carry