

NEBRASKA CAMPUS SOCIAL WHIRL

NO SUMMER SLUMP HERE

Some Nebraskans who spent their vacation in the Canadian woods or bicycling thru France, or even in the confines of Prairie Center may have overlooked the social activities of some of their more amorous classmates during the summer months.

But due to lack of space and energy, the Nebraskan can't begin to print all of the marriages; you can read them in the *Alumnus* magazine next year. A few of those which still stand out in the muddled minds of rush week include:

Roberta Foster, Alpha Chi Omega, and Bob Long, Delta Upsilon, in July. . . Althea Scheidt, Kappa Delta to Martin Koelen, Phi Rho Sigma, in August. . . Nola Alter, Pi Beta Phi, and Bob Scott, Sigma Nu, in August. . . Grace Shimerda, Phi Mu, and Franklin Vandenberg, Theta Chi, in late July. . . Maxine Kapple, Kappa Delta, and Paul Sel, Phi Sigma Kappa, in August. . . Heloise Whitcomb, Delta Delta Delta, and Paul Miller, Alpha Tau Omega. . . Alice Quigley, Phi Mu, to Francis Ayres, Delta Upsilon. . . Alice King, Alpha Chi, to Jerry Larson, Alpha Gamma Rho. . . Evelyn Miller, Kappa Kappa Gamma, and Dale Luke, Sig Chi from Cornell. . . Helen Ledford and Dale Parker, Sigma Nu. . . Lucille Sanders and Joe Walter, Epsilon Phi. . . Pauline Nelson, Alpha Xi Delta, and Harold Kesseling. . . Ruth Joyce and Yale Titterton. . . Lucille Exleben and William Bruce, Delta Upsilon. . . Dorothy Foster to Dan Houston, Sig Alpha. . . Marianne Anderson and Earl Wood. . . Katherine Oury, Tri-Delt to Richard Williams. . . Elma Kosmatka, Alpha Delta Pi to Howard Elm. . . Ellen Calder and Elmer Benson.

Mary Robinson Uplike of Omaha to Ed Sichel, Sig Chi. . . Blanche Ashbrook, Delta Gamma, to Albert Addyman. . . Sybil Gilmore and Frederick Pemberton, Sigma Nu. . . Mary Francis Reynolds to Albert King. . . Helen Baldwin, Alpha Phi and Mortan Board to Willis Stork, Delta Upsilon. . . Margaret Liston, Alpha Xi Delta to Theodore Hall. . . Catherine Crancer to Morton Spence, Phi Psi. . . Helen Turner and Harmon Heed, Teke. . . Jane Bell, Delta Gamma and Dr. Howard Metford, Delta Sigma Delta. . . Mary Alice Fitzgerald to Charles Armstrong. . . Aletta Robbins to John Byron, Lambda Chi. . . Ruth Kler, Phi Mu to Bob Rensch, Theta Xi. . . Lois Nelson and Frank Jackson. . . Margaret Lewin and Laurence Liebers, Farm House. . . Lucy Jean Kane to Jerry LaNoue, Chi Phi. . . Vivian Duncan to Lynn

WHAT'S DOING.

Monday.

Coed Counselor party for freshmen girls at Ellen Smith hall from 8 to 10 o'clock.

Tuesday.

Y. W. Y. M. party for both men and women new students at the Armory from 8 to 11 o'clock.

Wednesday.

W. A. A. party for all new women on the campus, at the Armory from 8 to 10 o'clock.

Friday.

University reception for all students at Morrill Hall, at 8 p. m. This night is closed to all other university social functions.

Saturday.

Barb Council party at the coliseum.

Leonard, Alpha Sigma Phi (Ed. Note—Ought to be a lot of future Nebraskan subscribers here.)

AT AN impressive wedding Saturday Miss Wills Geraldine Real of McCook was married to W. Neal Bailey, formerly of Lincoln. The bride served as Ak-Sar-Ben countess in the court of Miss Mary Lauer and William Disinger. Mr. Bailey is a graduate of the university and is a member of Sigma Nu. The couple will reside in McCook after a three weeks trip to California. Mr. Bailey is manager of the Bailey Stores company in Nebraska.

CECELIA VOGEL became the bride of Anton Vessel Saturday. Both have attended the university. Mr. Vessel is a graduate, having received his Ph. D. in chemistry.

MISS PAULINE GELLATLY is expected in Lincoln the first of the week to resume her university duties. Miss Gellatly has visited in West Virginia and Michigan. She will bring four plays which she has secured thru the press and which will be presented at the Junior league children's theater this year.

ANNOUNCEMENT was recently made of the approaching marriage of Roma DeBrown, Kappa Kappa Gamma, to Howard Agee, Chi Phi, September 26 at the Plymouth Congregational Church. Attending Miss DeBrown will be Jane Foster, maid of honor, and Virginia Foster Good, matron of honor.

THE MARRIAGE of Mary Elizabeth Prouditt, Kappa Alpha Theta to James Crabbill, Chi Phi, took place Saturday, September 12 in Lincoln.

IT SAVES THE COST OF A RING

Nor have the pin hangers, perennial and otherwise, been sleeping on their respective WPA shelves, according to the incomplete play by play reports that have reached the Rag office. We have some of the serious type that they print in the sedate downtown papers, and then we have some of those announced informally between dances at Antelope park. But here goes:

The engagement of Louise Rische, Alpha Chi Omega, and Ray Hackman has been announced. There are rumors again about Mauriel Hook, Alpha O, and Bob Leacock, Sig Alpha. . . Doris Johnson, Delta Gamma, has told her friends about Gay Miller, Kappa Sigma. . . Rosalie Mott, Chi Omega, and Dave Sowles, Phi Delt, have announced their intentions. . . Ruth Talmeh, Kappa, is wearing a Delt pin belonging to Ben Rimmerman. . . And Natlie Rehlander has been wearing Harold Ledford's white star. . . Rumors have been floating around all summer about Bill Marsh's Beta pin being seen in company with Elizabeth Kelly. . . And everyone else who failed to take advantage of the summer holiday will have to share their enthusiasm with candy and cigars to the sisters and brothers.

RECENT ANNOUNCEMENT was made of the approaching marriage of Alice Mae Livingston, Chi Omega, to Arthur Bailey, Alpha Sigma Phi. The date is November 26 and the couple will reside in St. Louis.

AUGUST 29 marked the wedding day of Winifred Shallcross, Phi Mu, and Edward Bloom, Kappa Sigma. They are residing in Madison, Wisconsin.

ANOTHER late August wedding you might have missed was that of Bessie Mae Adams, Alpha Chi Omega, to James Shafer, state tennis champ, Chi Phi and Phi Rho Sigma. They are living in Omaha, where Mr. Shafer is a student at the university medical school.

THE DATE will soon be announced for the marriage of Alaire Barks, Chi Omega and president of Mortar Board last year, to Charles Shields, Sigma Alpha Epsilon. The time is early October, and their home will be in Lincoln.

SEPTEMBER 5 was the wedding date of Alice Bookstrom, Kappa Delta and Verne Hart, Sigma Chi. They will reside in Lincoln.

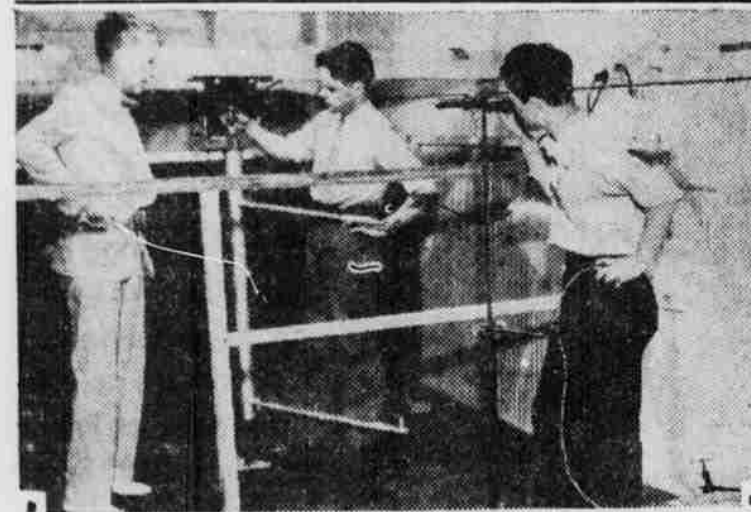
Kansas NYA Official Summarizes Student Work on Jayhawk Campus



MODEL OF BRAIN STEM



HOMERIC HOUSE AND MEDIAEVAL CASTLE



TESTING AIR CURRENTS' EFFECT ON FINE WIRES

LAWRENCE, Kas., Sept. 12.—Coincident with the announcement that all applications for employment at the University of Kansas on College Student Employment Projects must be on file by Aug. 10, Miss Mary Olsen, executive secretary of the CSEP at the University, gave out a summary of the work accomplished last year by the more than 500 students who for longer or shorter periods were on the payroll. The CSEP is one phase of the work of the National Youth administration.

More than 1,200 applications had been received early this month for the 420 undergraduate and 40 graduate appointments. A faculty committee will begin examination of the applications by Aug. 15 and by Sept. 1 every applicant will be advised by his status. Undergraduate appointees will average \$15 a month, with a \$20 a month maximum. From the reports from all University departments, Miss Olsen selected some of the outstanding tasks accomplished by CSEP students the past year. These included:

Mounting and classification of 20,000 insects for the entomology department under direction of Prof. R. H. Beamer. Large increase of package libraries for the extension division. Model of the brain stem, of especial value in the teaching of neurology. It is nearly four feet tall, and attracted much attention at the meeting of the American Medical Association in Kansas City this spring. Models of a series of historical dwellings, all on the same scale, starting with a Homeric home (Greek house); mediaeval castle, down to modern houses. Construction of apparatus for studying the force exerted by slow air currents on fine wire. Investigation of medicinal plants suitable for growth in Kansas. Digest of federal administrative agencies; also digest of laws on municipal home rule. Index of a vast number of fossil invertebrates in the museum.

Work-Relief Bureau Reports Large Number of Applicants

Predict Better Prospect for Student Employment This Winter.

Altho students seeking part-time employment are finding a dearth of jobs at the present time, there will be men wanted as winter comes on, according to J. D. Epp, who is in charge of non-NYA jobs. About 450 men students have applied for jobs. "Merchants report that more young men have sought work than is usual," the head of work-relief bureau declared. "Most of the store and home jobs are taken now. However, many people in Lincoln will not think of furnaces until cold weather, and it is then that we will be able to place more applicants." About one-half of the men students had part-time employment last year. The work-relief bureau canvassed Lincoln stores in August. For other jobs it depends on tele-

WELFARE COUNCIL COMMITTEES FIX YEAR'S SCHEDULE

Committees of students, faculty members, and university pastors began intensive preparation this week of the 1936-37 program of the University's religious welfare council.

Operating in three divisions, the groups forming the council are: A, faculty members, appointed by the Chancellor, representing the various denominations and Christian Associations; B, university pastors and church workers; C, two students elected from each religious organization on the campus.

Divisions meet regularly and the entire council assembles once a month for a luncheon meeting. The working committees of the council include survey and study, speakers and councilors, student banquets, foreign student banquet, and religious Emphasis Week.

Annual events sponsored by the council are All-University Church Sunday, student reception, foreign student banquet, and religious Emphasis Week.

Rush-e ban-e

phone calls from homes wanting help. The work consists of odd jobs, mainly for board and sometimes for room.

Applications from men are still being received in the office of the dean of men. Women seeking employment will apply in Ellen Smith hall to the dean of women.

SEVEN NEBRASKA MEN PLAN STUDY AT HARVARD LAW

Seven university men will gather at Harvard this fall to form the "Nebraska" club. Those attending the Cambridge institution are Charles Flansburg, Irving Hill, Donald Shurtleff, Jack Pace, Dwight Perkins, and Charles Steadman, all of whom will study law, and Jack Potter, who plans to take a business course.

BAPTISTS PLAN FIRST STUDENT GATHERING

Miss Grace Spacht Extends Invitation for Sunday, September 20.

The Baptist student house, 1440 Q St., center of Baptist student work on the campus, plans its opening meeting for Sunday, Sept. 20, according to Miss Grace Spacht, Miss Spacht, Baptist student secretary, cordially invites anyone interested to attend.

A student choir is conducted at the First Baptist church, 14th and K streets, under the direction of Dr. R. E. Sturdevant. Church services are held at 10:45 o'clock by Dr. C. H. Walcott. Sunday evenings, from 6 to 8, the Roger Williams Forum offers a social half hour, with lunch, followed by discussions of interest to all young people. Miss Jennie Niell is president of the group.

At the Second Baptist church, 25th and S streets, services are held at 11 o'clock by Rev. Max Burke. A Young People's class will be taught at 9:45 by Miss Spacht, and the Young People's organization, of which Mr. Clement Theobald is president, will meet Sunday evenings. Forums, a steak fry, sunrise worship services are some of the events planned. All students are invited to participate.

PROF. HANEY ATTENDS ENGINEERING MEETING

Prof. Jiles W. Haney, chairman of the department of mechanical engineering at the University of Nebraska will attend a meeting at the University of Wisconsin this week called for the purpose of discussing the feasibility of outlining a future course on diesel engines for the schools of this locality. Representatives from middlewestern universities will attend.

The only correct measure of a man is the size of the trouble that gets him down.

MOVIE DIRECTORY

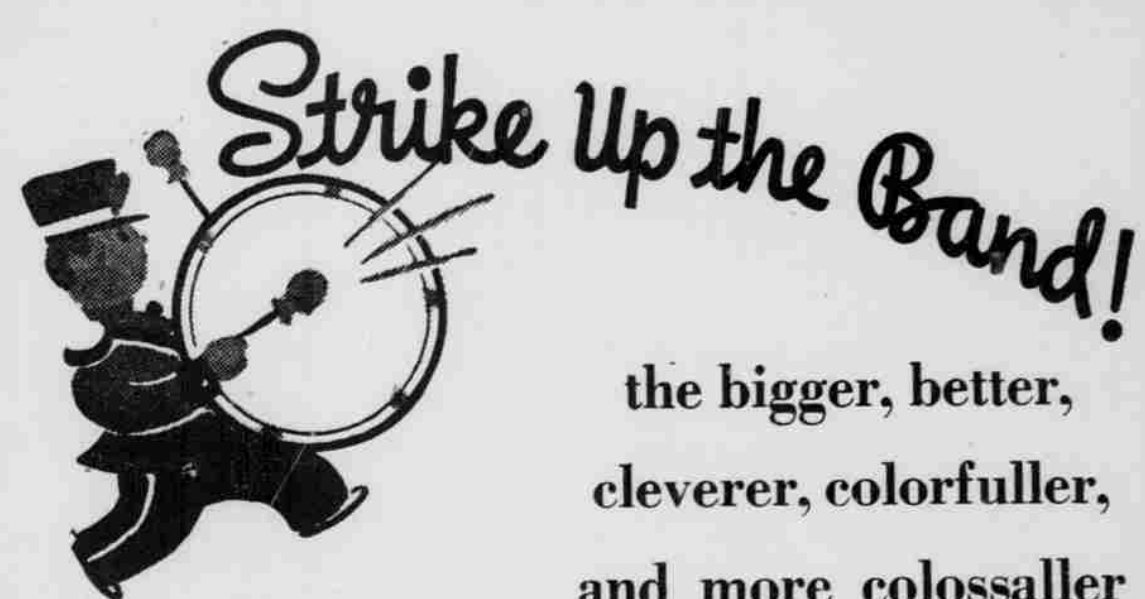
- STUART— "Anthony Adverse"
- LINCOLN— "Yours for the Asking"
- ORPHEUM— "Walking on Air" and "Second Wife"
- SUN— "Professional Soldier" and "3 Godfathers"
- VARSIY— "It's Love Again"

HELEN THIEOFF, Pi Phi, and John Brain, Phi Gamma Delta, were married September 5 in Omaha, where they will reside.

Rytx Double Check Stationery

100 Double Sheets
100 Envelopes
PRINTED— \$1.00
for Sept. Only

YOUR FRATERNITY CREST ON STATIONERY of Your Choice in 24 hours. George Bros. Party Service Our Specialty 1213 N St.



Strike Up the Band!

the bigger, better, cleverer, colorfuller, and more colossaller

A.W.G.W.A.N.

is ready to go!

SUBSCRIBE TODAY

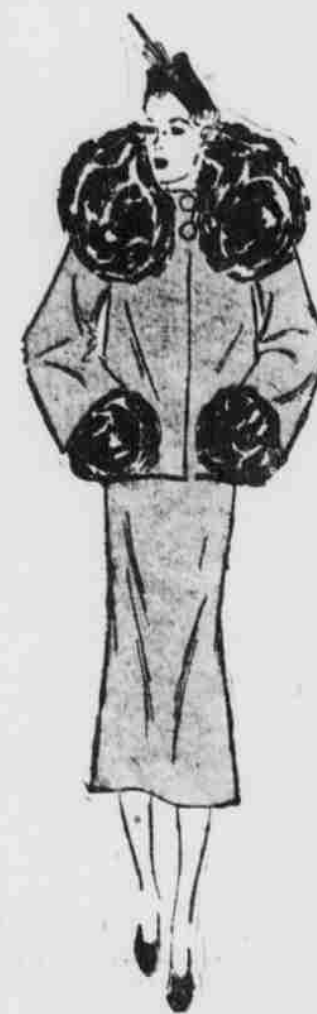
only one measly

\$1.00

(one dollar)

for the ENTIRE YEAR!

See a Co-Ed Counselor



Shirley Lee
Wine Wool
Civet Fur Trimming

FUR-LADEN SUITS

Paris decrees it—our finest designers confirm it—the high fashion of fur laden suits, 3-piece topcoat suits—2-piece talliurers—town suits—formal afternoon costume suits. For 26 autumns, Hovland-Swanson have been prescribing the right suits for those who seek the significant and inspiring in current fashions.

\$4975 . \$6975 . \$11975



Our new accessory and shoe salon has the perfect appointments to complete the ensemble. The correct shade of Artercraft Hosiery—the perfect handbag—appropriate costume jewelry—complimentary shoes—even to the detail of the right handkerchief.

Winkelman Shoes Exclusive with Hovland-Swanson

Welcome Back Old Friends & New

To THE STUDENTS' VALET Since 1886

N. U. Co-eds have depended upon us to keep them spic and span, and we haven't broken faith. That's why we are the headquarters for student laundry and cleaning.

The fit of your knit depends upon expert blocking. Send us your knits. We call at all houses at 9 A. M. You give us the order, we give you quality work and service.

Start right now and get the utmost in service.

Expert Launderers **The Evans** B6961 Responsible Cleaners

Convenient to the Campus 333 North 12th