

**STUART** Features No. 1740, 6113, 6140, 6122.  
*Exquisite Joan As You Desire Her!*  
**Joan Crawford**  
**GARY COOPER**  
 in  
**"Today We Live"**



**LINCOLN** Mat. 15c Eve. 25c  
*It's Gay! Sparkling With Melody and Mischief!*  
 Managee **CHEVALIER** in *Bedtime Story*  
 —ADDED—  
**BURNS & ALLEN**  
 in "WALKING THE BABY"  
 "SCREEN SOUVENIRS"



**ORPHEUM** Tue. Wed. MAT. 15c EVE. 25c  
**LADY'S PROFESSION**  
 A PARAMOUNT PICTURE  
 With **ALISON SKIPWORTH**  
**ROLAND YOUNG**  
**SARI MARITZA**  
**ROSCOE KARNIS**



**SOCIETY.**  
**SEVERAL GROUPS TO ENTERTAIN PARENTS**  
**Phi Omega Pi Planning Party to Be Held Saturday.**

**Kappa Sigs Are Hosts.**  
 The annual Mothers' dinner of Kappa Sigma was held Sunday at 1 o'clock at the chapter house. Twenty-five mothers were present at the affair, of which Dean Bowen was in charge.

**Former Student to Marry.**  
 Announcement has been made of the approaching marriage of Miss Katherine Williams, daughter of Mr. and Mrs. E. A. Williams of Dunlay, Ia., to Howard James, son of Mrs. Mary James of Wood-

- Breaded Pork Chops ..... 25
- Boiled Beef with Noodles ..... 25
- Boston Baked Beans ..... 25
- Roast Loin Pork with Apple Sauce ..... 25
- Creamed Peas
- Mashed Potatoes
- Dessert
- Coffee, Tea or Milk

PRESCRIPTIONS ACCURATELY WRITTEN and REASONABLY PRICED  
**Boydner**  
 PHARMACY  
 STUART BLDG. 6-7037

bine, Ia. Miss Williams is a graduate of the university where she is affiliated with Alpha Omicron Pi, Mortar Board and Phi Beta Kappa.

**Betas Entertain Sisters.**  
 Beta Theta Pi entertained at its annual sisters' dinner Sunday afternoon at 1 o'clock at the chapter house. About twenty-four guests were present including several from out of town.

**Schedule House Party.**  
 Phi Omega Pi is planning a house party to be held Saturday evening. Chaperons will be announced at a later date.

**Theta Chi's Initiate.**  
 Four were initiated into Theta Chi at the chapter house Monday evening. They are George McCrory, Lincoln; Carl Welchner, Lincoln; Avon Robbins, Lincoln, and Adolph Dorkman, Staplehurst.

**Honor Two at Tea.**  
 Mrs. E. J. Holyoke and Mrs. Harriet Thompson Platt were guests of honor at a tea given Sunday afternoon by Alpha Delta Theta. Miss Eleanor Seis, accompanied by Miss Bessie Bechtel played a number of violin selections during the afternoon.

**Plan Treasure Hunt.**  
 A picnic in the form of a treasure hunt has been planned by members of Kappa Phi and Phi Tau Theta. It will be held Friday evening at the Auto club.

**Delta Gamma to Wed.**  
 Mr. and Mrs. Arthur G. Christensen of Lincoln have announced the engagement and approaching marriage of their daughter, Roberta Jeanette, to Sterling J. Bemis, son of Mrs. Jeanette Bemis of Lincoln. Miss Christensen was graduated from the university in 1932 and is a member of Delta Gamma, Theta Sigma Phi and Phi Beta Kappa. Mr. Bemis, who also attended the university, is now a member of the editorial staff at the Journal.

**To Honor Parents.**  
 Parents of the members of Sigma Phi Sigma will be honored at a dinner to be held at the chapter house Sunday. The house will be decorated with the fraternity flowers.

**Alpha Chi's Plan Dinner.**  
 Alpha Chi Omega will honor the parents of out of town members at a 1 o'clock dinner at the chapter house Sunday. Spring flowers will be used on the tables. About fifteen guests are expected to attend.

**To Give Tea Sunday.**  
 A tea from 3 to 5 o'clock Sunday afternoon has been arranged by Alpha Phi for the parents of the members of the active chapter and pledges.

**Entertain Parents.**  
 The annual parents day of Alpha Delta Pi sorority will be observed on Mothers' day with a dinner at the chapter house.

**Announce Engagement.**  
 Elizabeth Brown, Delta Gamma, and Charles Stuart, Phi Delta Theta, informally announced their engagement when they passed the candy and cigars at their respective houses Monday night. Miss Brown is in Teachers college and Mr. Stuart is a senior in the Business Administration college.

**REGIMENT TO PARADE TUESDAY AFTERNOON**  
 (Continued from Page 1.)  
 nis court. Formation will be in column of platoons, facing North. It will follow the first battalion in forming for the parade.

**Form in Line.**  
 The first battalion will form facing North on the mall, East of Nebraska hall. It will form in a line of close columns. The second battalion will form facing North on the pot of ground near the Southeast corner of the tennis courts. It will also be in a line of close columns.

Third battalion companies will

Hotel  
**D'Hamburger**  
 SHOT-GUN SERVICE  
 1141 Q St. 1718 O St.

Andrews Hall. The formation will right of the battalion resting in 14th street.

Calls will be sounded as follows: first call, 4:00 p. m.; assembly, 5:00 p. m.; Battalion Adjutant's call, 5:05 p. m.; Regimental Adjutant's call—on signal.

At the Regimental Adjutant's call the regiment will form on the North road of Memorial hall in line or battalions in line of close columns facing South. Battalions will move to positions as follows: first battalion—via 12th street to position with the left of the battalion leading; second battalion, via side walk, East of tennis courts; third battalion, via 14th street, and Headquarters company, will follow in a line of close column, the low first battalion with the left of the company leading.


Company guidons will be placed within the battalion assembly areas marking the right of each company. The equipment will

consist of rifles and leather belts. Advanced course students will wear their uniform with white shirts; Basic students will wear the uniforms as issued.

**Your Garments Always Look New—**  
*When Modern Cleaned—*  
 SILK DRESSES have that sparkling new look.  
 WHITE COATS stay nice and clear white.  
 GLOVES clean perfectly.  
**Modern Cleaners**  
 SOUKUP & WESTOVER  
 Call F2377

**A SUMMER CLASS**  
 IN COMMERCIAL TRAINING  
 • • Plan a course of practical intensive training that puts you into position to take advantage of your opportunities.  
 Ask about our summer term beginning June 5.  
**Linco'n School of Commerce**  
 Member National Association of Accredited Commercial Schools  
 P & 14th W. A. Robbins, Pres. Lincoln, Nebr.

**Get going, Fella!**  
**HERE'S HOW**



**D**RAG your feet to the nearest campus lunch bar. Say "Shredded Wheat and half-and-half. Make it a pair."

You'll be treating yourself well. For Shredded Wheat is one food that's **VITALLY DIFFERENT.**

It brings you *all* the proteins, carbohydrates, minerals, vitamins that Nature stores in her richest cereal, *whole wheat*. For it is whole wheat—nothing added, nothing taken away—whole wheat, crisp-baked for easy digestion. All the bran is there, as Nature intended.

Try it with milk or cream and the fresh or canned fruit



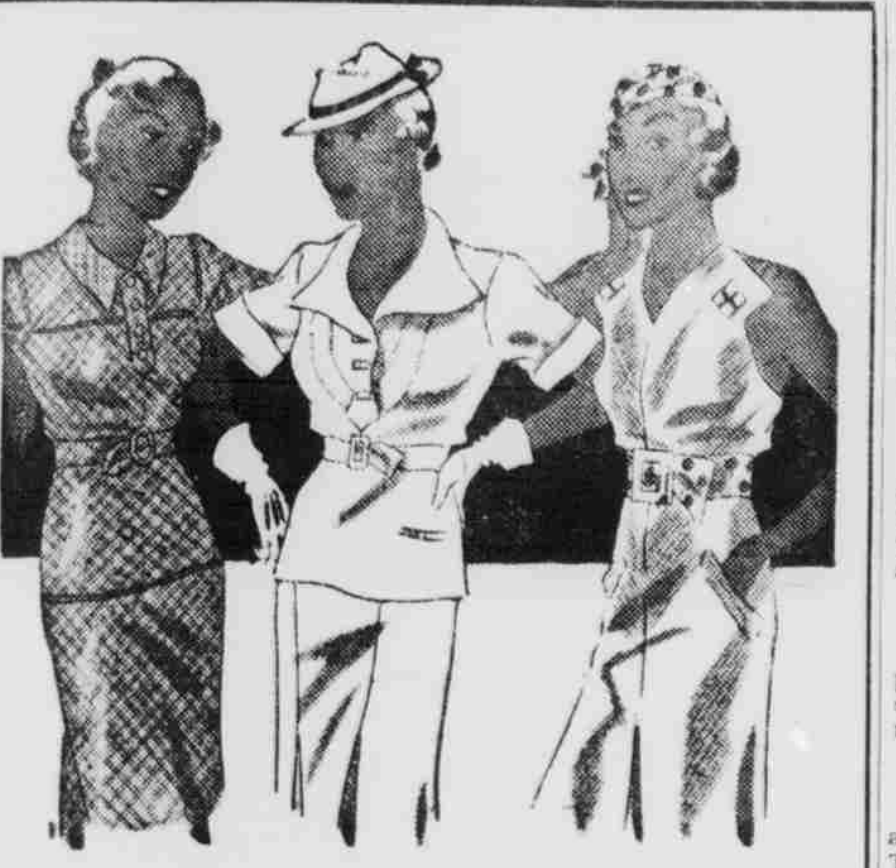
*Vitally different!*



When you see Niagara Falls on the package, you KNOW you have Shredded Wheat.

you like best. It's delicious; it's easy on your allowance. And it helps you keep in trim to lick the world.

**SHREDDED WHEAT**  
 A product of NATIONAL BISCUIT COMPANY "Uneeda Bakers"



**Smart Wash Frocks**

SEERSUCKERS . . . in one or two piece frocks—in gay greens . . . chipper pinks . . . and blues that you can't help but like. . . . **\$2.95**

LINENS . . . in gay pastels with contrasting trim . . . **RIBBED COTTONS** in two piece frocks . . . in pastels and whites . . . . . **\$2.95**

LINEN SUITS . . . double breasted styles in string linen . . . with bright blouses that add a smart note of color . . . . . **\$6**

**\$2.95      \$4.95      \$6**

**Magee's**  
 The Grey Room  
 Third Floor