

# Daily Nebraskan

Station A, Lincoln, Nebraska  
OFFICIAL STUDENT PUBLICATION  
UNIVERSITY OF NEBRASKA

Entered as second-class matter at the postoffice in Lincoln, Nebraska, under act of congress, March 3, 1879, and at special rate of postage provided for in section 1103, act of October 3, 1917, authorized January 20, 1922. Published Tuesday, Wednesday, Thursday, Friday and Sunday mornings.

Single Copy 5 cents  
during the academic year.  
THIRTY-SECOND YEAR

\$2 a year \$1.25 a semester  
\$3 a year mailed \$1.75 semester mailed

SUBSCRIPTION RATE  
Under direction of the Student Publication Board

Editorial Office—University Hall 4.  
Business Office—University Hall 4.  
Telephones—Day: B6891; Night, B6882 or B3333 (Journal) ask for Nebraskan editor.

### EDITORIAL STAFF

Editor-in-Chief—Phil Brownell  
MANAGING EDITORS

Dick Moran Lynn Leonard

### BUSINESS STAFF

Business Manager—Chalmers Graham  
ASSISTANT BUSINESS MANAGERS  
Bernard Jennings George Holyoke  
Frank Musgrave

## The Legislative Committee's Report.

A CAREFUL examination of the report released Saturday by the legislative committee investigating the university reveals some peculiar features of the recommended cuts in salary schedules for the various colleges and agencies of the university. The Nebraskan has compiled and is printing a list of these proposals showing the percentage of salary slashes recommended for the various departments.

The Nebraskan has no information as to how these various sums recommended by the legislative committee were determined. It is surprised, however, at the wide discrepancies in the percentages of cuts proposed for various colleges. Nothing like a uniform system seems to have been attempted.

The Agricultural college, for example, which spends more money than any other college in the university, except the College of Arts and Sciences, comes off with the lightest cut, something slightly over 7 percent. The Arts and Sciences college, which incidentally contains departments which serve every other college in the university, is slated for a 30 percent slash. Why is this?

The library, which has been notoriously lacking in service facilities as well as material equipment, is the target for a slash of one-third. The library is an agency provided to serve every student on the campus. But the school of fine arts and the school of music, whose facilities are, after all, really used by a relatively small number of students, are asked to cut down their salary list by only 9 percent.

It may, perhaps, be significant to point out the fact that the medical college received only a 9 percent cut. A member of the committee is from Douglas county. All the agricultural experiment stations are asked to take a 50 percent cut except the station at Scottsbluff. One member of the committee comes from Scottsbluff.

But since the Nebraskan has not made a study of the situation as has the committee we would not be presumptuous enough to criticize the report. We will only disagree with some aspects of it and agree with others on general principles.

For instance, we believe that the committee is wrong in stating that they do "not favor any considerable elimination of positions, so as to maintain the higher salaries at their present level." Rather than see every university professor get an average salary cut of approximately 25 percent beyond the 10 percent already received, the Nebraskan would prefer to see a lot of surplus growths and encumbrances removed entirely from the university.

THERE are certain functions which have been palmed off on the university which have a very remote connection with education. Such functions should be

separated from the university and be provided for from funds not earmarked "educational."

Then too, there are functions which the university has acquired, probably partly because other universities have acquired them, which, we believe, are not indispensable parts of an educational institution. In fact there are some whose desirability may be questioned even in prosperous times. The Nebraskan should like to see very serious consideration of the advisability of abandoning such functions in part or in whole as a means of saving money, before general salary slashes begin.

A SIDE from this, the Nebraskan disagrees vigorously with what seems to be an illogical and absolutely non-uniform system of salary cuts. If differentiation in the amount of money to be lopped off from the various college payrolls is necessary, consideration should at least be taken of the relative services rendered by the agencies or colleges, and their relative necessity to a state educational institution. Furthermore, where discrimination is to be employed, it would seem a wiser principle to leave to authorities intimately connected with the school, the determination of where and for what reason these discriminations shall be made.

THE suggestion that the Graduate college might be put upon a self-supporting basis seems logical in many respects. At least it could be made more nearly self-supporting. The committee, we feel, would have done a better job if it had confined its investigations and recommendations to such changes of policy as this, without attempting to get at, by what process we know not, a figure to which salaries in the various colleges should be reduced.

We believe the committee is right in suggesting that all commercial activities be placed on a self-supporting basis. Here again, the committee is recommending a change in policy which it is qualified to suggest without detailed knowledge.

The committee also recommends that married women insofar as is possible be replaced by qualified individuals who have greater need of employment. This is a very controversial question and the Nebraskan is uncertain as to the merits of the two sides. It does feel that this recommendation, however, is within the proper scope of the committee's work.

THE Nebraskan is certain that the university has not the slightest disposition to shrink from bearing its share of the retrenchment made necessary for all governmental institutions. But it believes that the committee in making its specific recommendations for salary cuts was tackling a problem which requires more intimate knowledge of the university than can be gained from a more or less cursory investigation conducted in a relatively short time.

In other words, it hardly seems that the committee is fitted to make these specific recommendations, but should rather leave to university authorities the task of apportioning the reductions according to their more intimate knowledge of conditions and circumstances. Furthermore, we believe the legislature should relieve the university of all functions extraneous to education of students. Under these conditions we believe the solution to the difficult problem of retrenchment could be worked out more satisfactorily in all respects.

### COMMITTEE WANTS BIGGER CUT MADE

(Continued from Page 1.)  
experiment stations, the committee expressed the belief that a saving of 50 percent could be made in all the stations with the exception of the one at Scottsbluff. The committee also believes that if tractor-testing is to be continued it should be made self-supporting

by legislation to increase the fees. No appropriation was recommended for this activity.

No allowance was made for the additional salary of \$600 paid Coach Bible as director of athletics. Also no allowance was made for the \$980 paid for swimming pool attendants, making it a strictly student activity.

The committee recommended that all commercial activities should be made self-supporting or else discontinued. This includes: Book store, farm cafeteria, Temple cafeteria, state serum plant, and the women's dormitories. No allowance was made for this salary list.

In the report, the committee favored a careful scrutiny of the university payroll in an effort to discover whether or not changes can be made by the removal from the payroll of married men or women whose spouses are also employed and their places given to other properly qualified persons who are in greater need of the employment.

In considering the purchasing department, the report recommended that all firms and individuals should be given equal opportunity to sell to the university and that when the department

needs supplies it should post notices of its requirements in public places.

### Commends University.

At the conclusion of the report, the following statement was made by the committee: "In conclusion, the committee desires to state that it is very appreciative of the cooperation afforded to it in its work by the regents, officers, and faculty members of the university. The committee is satisfied that the University of Nebraska is being operated and managed in an efficient manner and that this institution reflects credit on the state of Nebraska and is a university of which every Nebraska citizen might well be proud."

Legislators who made up the joint committee are: Senators Neubauer, Gree, Neeland, Calland, McCarter; and Representatives Vance, Chase, Bock, Mueller, and Beushausen.

### HONORARY SOCIETIES

#### WILL ANNOUNCE NEW

#### MEMBERS THURSDAY

(Continued from Page 1.)

bers at the joint convocation. Dr. Charles H. Judd, who has been secured as speaker for the

affair, comes to the university highly recommended. As head of the school of education at Chicago university, Dr. Judd has associated with many leading educational associations and societies. Dr. Judd also has published many books and articles dealing with education and its problems, and is known well in national educational fields.

### A.W.S. TO RECEIVE NOMINATIONS FOR OFFICERS MONDAY

(Continued from Page 1.)

ballot boxes will be placed on the Ag campus. All the voting will be held at Ellen Smith hall between the hours of 9 and 5 o'clock. The presidents of the organized houses will be asked to assist at the polls. Anyone else wishing to assist is requested to call Jane Axtell at F2523.

### Cliff S. Hamilton Talks To Chemistry Society

Dr. Cliff S. Hamilton, department of chemistry, talked to members of the Omaha branch of the American Chemical Society Wednesday evening on "Arsenicals, Old and New." The meeting was held at Creighton university.

For college men who want long wearing STYLE

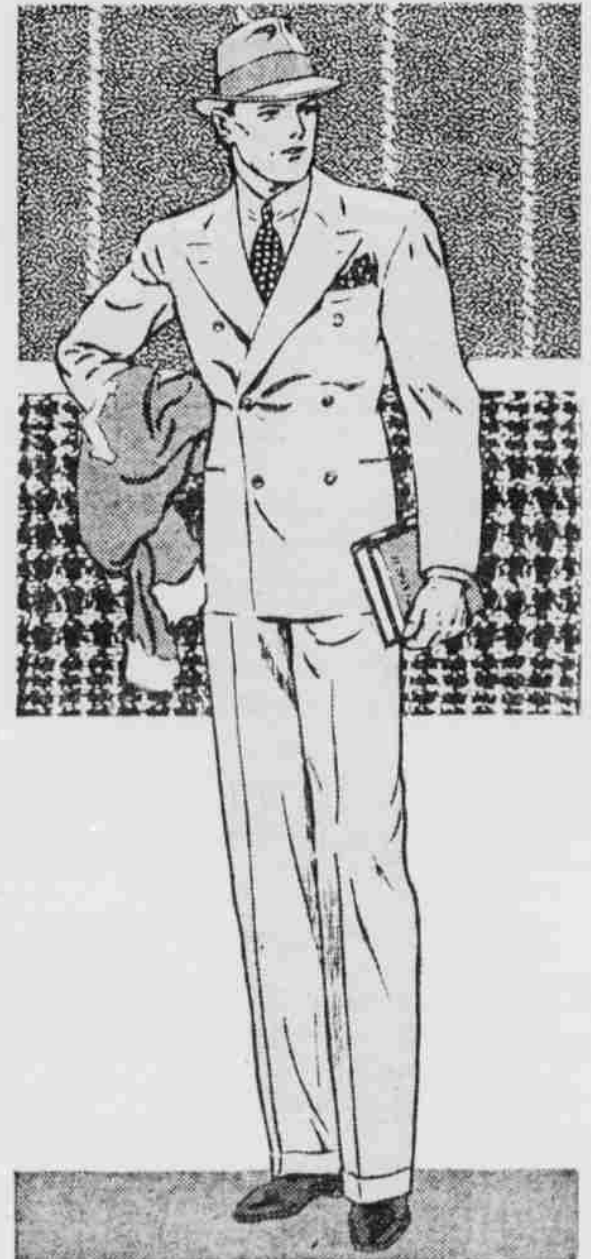
# FOUR STAR WORSTEDS

from

HART SCHAFFNER & MARX

In the new

# WALES STRIPES & PLAIDS



STURDY, weighty, long-wearing worsteds woven in America of American grown wools, and made with 72 Bench Tailoring features by skilled American craftsmen. Here in new Spring styles in all the good colors and patterns, as well as the popular Wales Plaids and Stripes

\$25

Brigadier Topcoats

\$17.50

Harris Tweed Topcoats

\$25

Ben Simon & Sons  
FORMERLY ARMSTRONGS