

### IOWA DIRECTOR TELLS OF SLASHED PROGRAM

#### Clarifies Action of Recent Conference Officials' Retrenchment.

AMES, Ia., Dec. 14.—Athletic schedules originally planned by the Iowa State college athletic department will be generally reduced in accordance with the retrenchment program agreed upon by Big Six officials in their meeting early last week, T. N. Metcalf, director of athletics announced yesterday.

Metcalf said the outcome of the conference was a universal argument of schools in the loop to economize on officials, traveling expenses and equipment. None of the minor sports was struck from the program, but the schedules were reduced.

"We'd rather go ahead and give competition under more difficult circumstances than to give up a sport entirely," Director Metcalf said.

The Iowa State college athletic department is in a better financial condition than those in other schools, Metcalf pointed out, but the school faced a deficit of \$3,000 this year if the original program of sports were carried out. Football receipts dropped off 26 percent, although profits dropped off relatively little. Football receipts throughout the six schools of the conference suffered a drop from 10 to 30 percent.

The Cyclone basketball schedule was left intact, but one official will take the place of two to effect a saving of \$50 a game. Round robin tournaments are to be discontinued in wrestling, tennis and baseball and the champions will be declared by the athletic directors on basis of records in dual meets which can be scheduled at the option of the schools.

**Other Schedules Cut.**

The local wrestling schedule is almost complete with only minor modifications. The match with Indiana, however, has been cancelled. The 175-pound class has been eliminated and all of the conference teams will travel by auto. As a further economy the officiating will be done by coaches or others without pay.

Tennis and baseball schedules have not been drawn up as yet. Metcalf expressed the belief that Nebraska will not be represented by a baseball team this year.

In swimming, the conference is going ahead with plans for a conference meet at Lincoln on March 5. Three dual meets are booked on the Cyclone tank schedule.

The conference indoor track meet will be held at Missouri on March 12, although indoor dual meets between the schools were given up, Metcalf asserted. Drake and Grinnell will oppose the Cyclone trackmen in the only indoor dual meets on the local schedule.

Nebraska will be host at the outdoor track meet of the conference on May 20 to 21. Iowa State will participate in the Drake relays and the state meet, in addition to dual meets with Missouri and Drake.

The question of using three officials in football instead of four was brought up and favorably discussed but no definite action was taken.

### CONVENTIONS, WRITING WILL CLAIM TIME OF FACULTY MEMBERS DURING COMING HOLIDAY RECESS PERIOD.

(Continued from Page 1.)

Germanic languages, will attend the conference of the Modern Language association of America, scheduled for Dec. 28 to 30 at the University of Wisconsin at Madison. Dr. Rayer is chairman of the group which studies Wordsworth and his contemporaries; and Dr. Pound will appear on the program of the present day English section.

Dr. H. J. Pool, chairman of the department of botany, will devote most of his time during the Christmas recess to writing and to other activities related to the preparation of a book upon which he is at work. Dr. Harold Pool, however, may spend a few days in Chicago, making a number of personal calls and looking up matters of educational and scientific interest.

**Goes to New York.**

Miss Mabel Lee, chairman of the department of physical education for women, will attend a number of meetings during the holiday season. Miss Lee will preside at the annual business meeting of the executive committee of the American Physical Education association in New York City. Miss Lee is president of that organization.

While in that city she plans to attend meetings of three other organizations, the Society of Directors of Physical Education in Colleges and Universities, the Society of State Directors of Physical Education in Colleges and Universities, the Society of State Directors of Physical Education and the Student Health association.

From New York City, Miss Lee will go to Philadelphia to meet with the local committees and a Philadelphia hotel management to complete arrangements for the National convention of the American Physical Education association which will be held in that city in April.

From Philadelphia, she plans to go to Washington for a conference at the National Education association headquarters in regard to establishing future relationship between that organization and the American Physical Education association.

**Bengton Stays Here.**

Although Dr. N. A. Bengton, chairman of the department of geography, has attended national conventions during the holiday season for the past several years, he plans to remain in Lincoln this year to do research work in preparation for articles for publication.

Prof. G. D. Swezey, chairman of the department of astronomy, will

### Sigma Delta Chi to Meet Thursday at 4

Sigma Delta Chi will meet Thursday afternoon at 4 o'clock in The Daily Nebraskan office. The meeting is an important one and all members must be present, according to William McGaffin, president.

go to Los Angeles, Calif., to spend Christmas with his two daughters living in that city and while there he plans to visit Mount Wilson observatory which is located near Los Angeles.

Dr. B. Clifford Hendricks, associate professor of chemistry will remain in Lincoln to complete some papers he is preparing for publication and to continue the revision of a book.

Prof. Lawrence Vold of the college of law will go to Chicago during the holiday period where he will meet with the Association of American Law Schools. Professor Vold is scheduled to address the round table on business associations on "The Functions of the Corporate Utility Theory in the Analysis and Solution of Practical Problems." He has also been invited to speak at the round table on wrongs, using the subject of "What Should Be the Scope of Liability for Unintended, Non-Negligent Acts." At the business session he will report briefly the problems encountered in his first year as directory supervisor for the Directory of Teachers in Association Schools.

#### To Visit Parents.

Lawrence Pike, assistant editor and instructor in journalism, will visit his parents in Shelby, Mont. Gertrude C. Goering, instructor in commercial arts, and Minnie Schlichting, assistant principal and supervisor of teachers college high school, plan to attend the meeting of the National Federation of Commercial Teachers in Chicago, December 28 to 30, where Miss Goering will give a demonstration lesson in beginning short hand.

Miss Neva B. Walker, member of the department of botany faculty, will attend the meeting of the American Association for the Advancement of Science. She will preside at the national convention of Sigma Delta Epsilon, graduate women's scientific fraternity, where she will read a paper before the micological section.

Prof. Lester B. Orfield, college of law faculty member, will visit his parents, Mr. and Mrs. Andrew C. Orfield, in Minneapolis, Minn., during the holidays.

The annual meeting of the American Philological association convention during the vacation period at Richmond, Va., has attracted M. Ginsburg, member of the department of classics. At this meeting Mr. Ginsburg will present a paper on "The Hellenistic Prosodie and the Probuli."

Mrs. Mary Campbell Major, chaperon of the university dormitory at 1220 R street, will be in New Jersey and Pennsylvania during the holidays. She will visit her son, Dr. Randolph T. Major, who is a research chemist at Westfield, N. J., and another son, John C. Major, who is doing graduate work in English at the University of Pennsylvania in Philadelphia.

Carolyn Ruby, instructor in textiles and clothing, plans to visit her parents in Des Moines, Ia., during the holiday season.

Mrs. Flora M. Hildreth, chaperon at dormitory D, will entertain her son, Roscoe C. Hildreth, a senior in the college of medicine, during the Christmas season.

### CATHEDRAL CHOIR TO BROADCAST THURSDAY

(Continued from Page 1.)

Melva Scudder, Central City; Elaine Baxter, Lincoln; Verna Mae Easton, Walthill; Dorothy Kunz, Wood River; Ariene Steepie, Osceola; Ruth Haberly, Smith Center, Kas.; Ruth Ely, Hartington; Eabette Sears, Lincoln; Hazel Brown, Lincoln and Lorraine Lovgren, Fremont.

Tenors: Charles McCarl, McCook; Harvey Humann, Lincoln; Robert Young, Westington, S. D.; Marlowe Westerhof, Alexandria; William Carns, Central City; Mark Hackman, Shelton; Donald Dobson, San Jose, Cal.; Laurence Kearney, Lincoln; Duncan Sowles, Kearney; Harold Spencer, Lincoln; Frank Prawl, Lincoln; James Egeyer, Plattsmouth and Charles Nye, Pender.

Basses: John Milligan, Scribner; Albert Ebers, Seward; Roger Seng, York; Walker Corder, Lincoln; William Irons, Lincoln; Giles Gere, Kansas City, Mo.; Elbert Brown, Lincoln; Lawrence Ely, Grand Island; Arne Engberg, Kearney; Lucien Ide, Creston, Ia.; Henry Lehnhoff, Lincoln; Paul Carlson; Holdrege; Clark Hamilton, Lincoln; Harold Coates, North Platte and Randolph Soker, Hildreth.

### AWGWAN SALES WILL CONTINUE THROUGH TODAY

(Continued from Page 1.)

Contributions in the line of articles include "Depression Will Go," by J. T. Coffee; "Water," by Walter J. Roland Miller; and "Why College Men Commit Suicide," by Art Wolf.

Among the poems are included "Foolish, Formal Fashions," by Rosalie Lamme; "Fire Alarm" and "Phoney Love," by Francis Cunningham and a number of unsigned contributions.

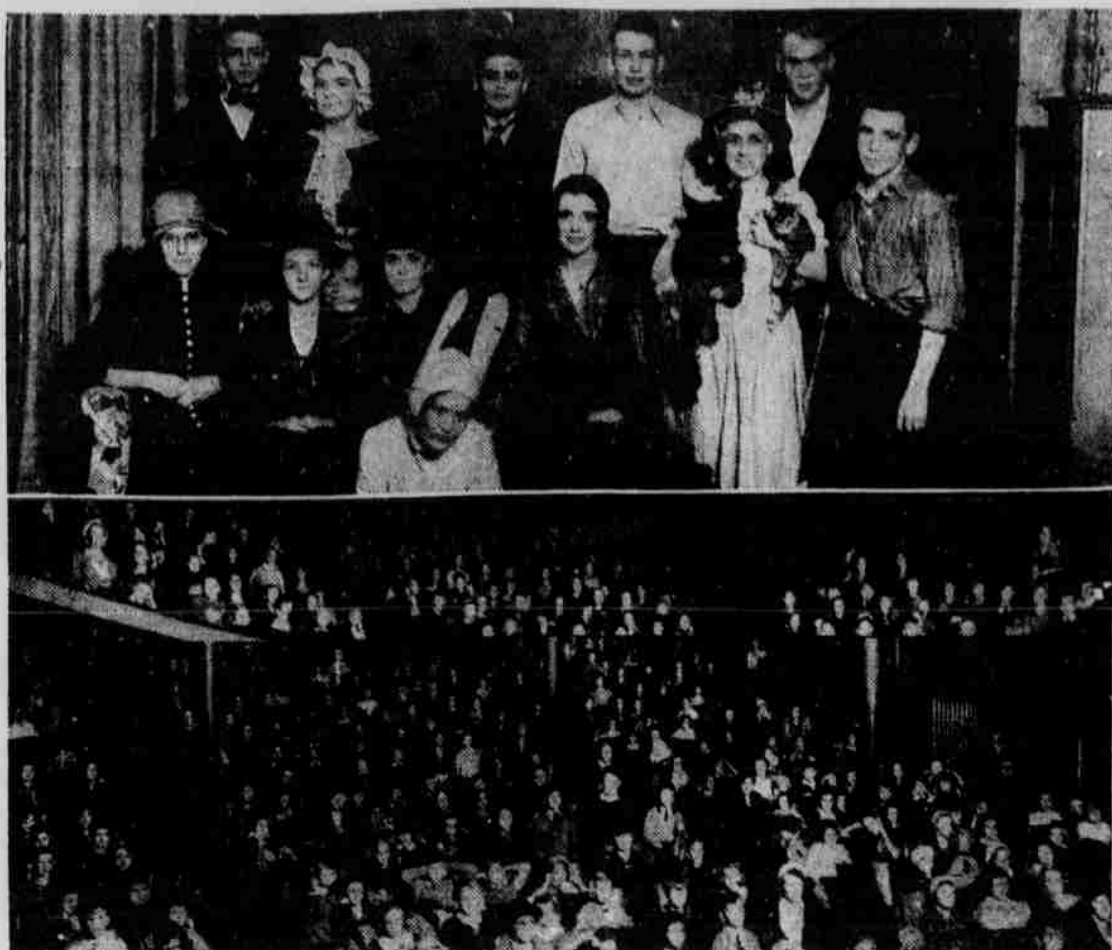
Other features of the issue include the Theta Sigma Phi page of "Whos Zoo on the Campus" and the drawings by Marjorie Quivey, Norman Hansen, and Editor Robinson.

Price for the issue is fifteen cents.

### DRUG STORE NEEDS

Rector's Pharmacy  
83952 13 & P Sts.  
C. E. Buchholz, Mgr.

### AT JUNIOR LEAGUE PRODUCTION OF "POLLYANNA"



Above is pictured the cast from members of the University Players who presented "Pollyanna," at the Children's theater at the Temple theater Saturday afternoon, under the auspices of the Junior League. The play was directed by Miss Pauline Gellatly, who took the part of the title character. She is shown with two of her pets, who appeared in the performance. In the lower picture are shown the young audience who filled both floors of the theater.

### ANNUAL 'MESSIAH' TO BE PRESENTED IN ARMORY TODAY

(Continued from Page 1.)

And the Angel said unto them, Fear not. And suddenly there was with the angel a multitude of the Heavenly Host.

Chorus—"Glory to God in the Highest."

Contralto—"Then shall the eyes of the blind be opened. He shall feed His flock."

Soprano—"Come unto Him all ye that labor."

### THE PASSION.

Chorus—"Behold the Lamb of God."

Contralto—"He was despised and rejected of men."

Tenor—"Thy rebuke hath broken His heart. Behold and see if there be any sorrow like unto His sorrow."

Chorus—"Lift up your heads, O ye gates."

### THE RESURRECTION.

Soprano—"I know that my Redeemer liveth."

Chorus—"Hallelujah!"

Those selected for this part are: Vera Upton, Edith Ledwick, Francis French, Bertha Aydelott, Mildred McFarland, Sybil Winegar, Katherine Borron, Paige Crawford, Delia Kolling, Charlotte Hummel, Mrs. A. E. Schloss, Sylvia Diers, Ruth Haberly, Doris Cole Clapp, Mrs. E. C. Boehmer, and Gretta Hageman.

### Orchestra Aids Presentation.

An orchestra composed of twenty-five pieces in addition to the organ will play the accompaniment for the Choral Union. Members to form this orchestral unit are Carl Steckelberg, Valerita Callie, Emmanuel Wisniewski, Naomi Randall, Lois Lefferdink, and Carleen Steckelberg, playing first violin; Ernest Harrison, Jeannette Mossholder, Doris Dickinson, and Bettie Zatterstrom, second violin; Marjorie Seaton and William Heller, viola; Betty Zabriskie and Ruth Sibley, cello; Mark Pierce and Quinn Lotspeich, bass; Clair Johnson and Maxine Wullbrant, flute; Glen Ewing and Harry Geiger, clarinet; Loren Huzida, oboe; Clyde Wedgwood, horn; Don Berry, trumpet; Fieda Graham Zeigenbein, piano; and Edith Burlingim Ross, organ.

The production will be offered at 8 o'clock for the second time since its origin. Previous to last year it was held at some morning hour. The affair will be open to the public with no admission charge.

Kirkpatrick has held all his rehearsals up to this time for the "Messiah" in class sessions of the

### FRATERNITIES TO LEND SUPPORT IN DRIVE FOR FUNDS

(Continued from Page 1.)

vate parties during the week at which time contributions will be offered by members. Several of them plan to make contributions late in the week by individual subscriptions.

That the sororities will co-operate in the drive was indicated last week when Julia Simanek, president of the Panhellenic council, declared that many of the sororities plan to contribute to the fund. All members of the council were notified of the plan, but no check has been made of plans yet.

The interfraternity council committee which is working on the drive consists of Bob Lau, chairman; Jim Crabbil, Harold Caster, and Norman Galleher. Contributions to the fund will be received by any member of the committee.

"I am very much pleased with the result of the campaign so far," Lau declared yesterday. "However, I hope that as many organizations and individuals as possible will contribute to the fund. It is for a worthy cause and deserves the support of everyone."

The money received for the fund will be turned over to the Lincoln community chest and spent under the directions of the committee. Contributors to the fund may specify in what way they wish their money to be spent and the community chest will carry out their wishes, Mr. Louis C. Horne, director of the chest, said.

### The Growler

BY HARRY FOSTER.

The president of Wyoming university performed an interesting experiment the other night, so the papers tell us. Pedagogical stupidity, as my English professor would

### "Your Drug Store"

Call us when you need drugs quick. Also snappy lunches or a real box of chocolates.

### The Owl Pharmacy

148 No. 14th & P. Phone B-1065

## GIFTS



HUNDREDS OF CLEVER GIFT NOVELTIES REASONABLY PRICED

CHRISTMAS CARDS For SWEETHEART FAMILY FRIENDS

A Very Large Assortment from Which to Choose

EASTMAN KODAK STORES, INC. 1217 O STREET

to convention. Teachers implore students to be different, to be individuals and when they attempt to express their individuality they say that they are not good members of society. The question is how to be an individual and at the same time conform. When you have learned how to do that you are a valuable member of society and are being true to your best self.

Japan has not yet accepted the proposal of an investigation commission of neutral powers to look into the Manchurian affair. The her representatives at Paris agreed to the league council's proposal, Tokyo, attacks the phraseology of the petition. Also this has made new demands for control of southern Manchuria. Japan insists anew that Marshal Chang Hsueh-liang's civil government and his troops be

withdrawn from Chinchow behind the great wall.

### Former Student Teaches In North Dakota College

Walter Hansen, a former student in the department of geography, is now teaching geography at the state teacher's college at Dickinson, N. D. He is preparing two courses in geography which will be offered as extension work.

ONLY 26 MILES TO KIND'S CAFE CRETE Sandwiches 59 varieties FRED H. E. KIND

Spend the Holidays in a Smart New Winter Coat

New shipment of coats at— \$25 EA.



### SPORTS AND DRESS COATS

of a particularly fine quality at this price. Novelty tweeds accented with raccoon, lapin (dyed rabbit), wolf and skunk. Boucle coats furred with caracul, skunk and fox paw. Very smartly styled with widened shoulder effects, belts, side fastenings, unusual cuff treatments and slender skirts. You'll be glad to find such a smart opportunity for your holiday wardrobe!

Sizes 14 to 42

—Second Floor.

Miller & Paine



They learned about football from "him"...

Just a sawdust-stuffed canvas sack, shaped to represent the human form. But the football men dive into "him", tackle "him", put all they've got into bringing "him" down. The dummy represents the human obstacles that will block their way to victory in the real games. They know that once they can take "him" out, they'll be able to pull down their live opponents.

The McGraw-Hill Publications aid engineers and business men in precisely the same way. These magazines show what problems the future holds in store for their readers, how best to tackle each. Business men and engineers know the value of this, and read their McGraw-Hill Publications regularly.

Soon you'll be tackling a real, live job, with real, live problems popping up when you least expect them. Get a taste of the battle now and get the jump on that first job. There's a McGraw-Hill Publication covering the field you intend to enter. Ask your librarian for the latest issue. Most college libraries have McGraw-Hill Publications on file.

## McGraw-Hill Publishing Co., Inc.

New York - Boston - Philadelphia - Washington - Greenville - Cleveland - Detroit - Chicago - St. Louis - San Francisco - Los Angeles - London

Business men, industrialists and engineers—600,000 of them—regularly read the McGraw-Hill Publications. More than 3,000,000 use McGraw-Hill books and magazines in their business.	Electrical World Electrical Merchandising Electrical West Radio Retailing Electronics Food Industries Chemical & Metallurgical Engineering Textile World	Engineering and Mining Journal Engineering and Mining World Metal and Mineral Markets Coal Age American Machinist Product Engineering Chemical & Metallurgical The Business Week System	Factory and Industrial Management Maintenance Engineering Engineering News-Record Construction Methods Electric Railway Journal Bus Transportation Aviation Power
--	--	---	--

# DO YOUR CHRISTMAS SHOPPING IN LINCOLN