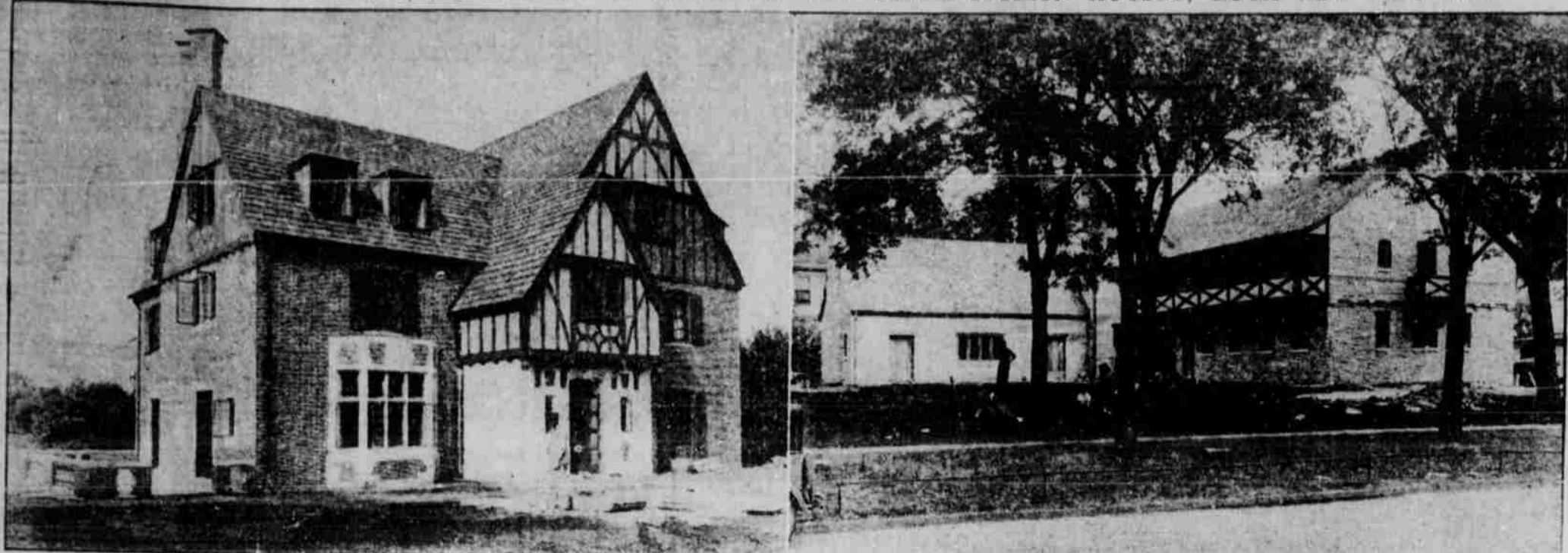


TYPICAL ARCHITECTURE DISPLAYED IN SIGMA CHI AND DELTA UPSILON HOUSES; BOTH NEW THIS FALL



The Sigma Chi house, shown to the left, opens hitherto untouched territory to the north on Vine street between Fifteenth and Sixteenth streets. The property is valued at about \$65,000, including the furnishings. The house is of English architecture, with a note of Gothic influence to suggest the college buildings at Oxford and Cambridge. It is finished in Flemish bond style, trimmed with Indiana slate. The Delta Upsilon house, right, is a striking example of French architecture. It is built around the inside of a corner lot, the two wings extending to the north and west being connected with a tower, through which entrance is gained. Delta Upsilon is the first Greek organization on the campus to depart from the trend of the last five years by building a house off the campus. Their new residence is located at Seventeenth and E streets. It is being built at a cost of about \$70,000, including furnishings and property valuation, and will soon be ready for occupancy. Members are already living in the new Sigma Chi house.



Don't Forget

The Big Fun Fest TONIGHT!

Wherever you go or whatever you do you'll never find better entertainment than at Antelope. All the Gang enjoys a real treat.

Where the College Crowd Gathers



TWO GREEK GROUPS FACE SCHOOL YEAR WITH NEW HOUSES

Delta Upsilon and Sigma Chi Move Into New Residences.

Two new fraternity houses have been added this year to the many others which have been built on the campus during the last five years. They are the Sigma Chi and Delta Upsilon houses. In keeping with the trend toward building near the campus, the Sigma Chi house opens up hitherto untouched territory to the north of the proposed new university hall on North Fifteenth. Delta Upsilon fraternity, however, departs from the campusward trend of the last five years and is the first organization to build off the campus. Their new home is being built on the quarter block at Seventeenth and E streets. New Houses Planned. The new houses on the campus will soon be supplemented by that of Alpha Tau Omega, which has announced building plans for a house at Fifteenth and T, and the Phi Omega sorority Pi house, which according to present plans will be erected in the spring at the present location, Sixteenth and S. Alpha Delta Pi sorority also plans to build at Sixteenth and Vine streets, where it owns the southeast lot. Several other organizations own campus lots, but in many cases prefer to defer building operations until the university begins developing the still unopened eastern section of the campus. They are Lambda Chi Alpha, Alpha Sigma Phi, Phi Gamma Delta, Alpha Chi Sigma, Pi Kappa Phi, Tau Kappa Epsilon and Theta Chi fraternities.

YOUR DRUG STORE Welcomes you back to school. Let's go, the same place, the best service, as always. THE OWL PHARMACY 148 No. 14 & P Phone B 1068 WE DELIVER

and Sigma Kappa sorority. The new Delta Upsilon house will be ready for occupancy about Oct. 1. The Sigma Chis are already living in their new home. Both new houses are fine examples of typical architectures, the Sigma Chi house being suggestive of the Gothic college buildings of Oxford and Cambridge with its Gothic treatment of the English style. The Delta Upsilon residence is carried out in the French provincial manner both inside and outside. Tower Connects Wings. It is built around the back corner of the lot in the shape of an L. Entrance to the two wings is through a tower in the angle between the wings, which extend to the north and west. The north wing, a story and a half in height, contains the great hall or living room. The west wing of the L, two full stories high, is taken up with sleeping and study rooms. In the center tower are the housemother's quarters and a trophy room. The basement is broken up into a dining room, kitchen facilities, a cook's room, boiler room and trunk space. The outside of the house is faced with random-coursed Ashlar stone of mixed gray and buff. The roof is mixed red tile in variegated shades. Estimated cost of the building, property and furnishings is \$70,000. Furnishings will be in keeping with the general plan of the building, and an informal French landscape plan will occupy the garden space in the front of the house. Notable because it is the second house to be built on the campus by one organization, is the Sigma Chi house, which is being built at an estimated cost of \$65,000, including property and furnishings. University Buys Old Sight. The old Sigma Chi house will be torn down by the university, who bought the site to make room for the proposed new women's dormitory. The new house is the first one to break ground in what will some day be a fraternity row on Vine street from Fourteenth to Sixteenth. North of the Sig Chi's new home eventually will be a women's athletic field, according to the proposed university development. The exterior of the house is finished in Flemish bond style, and trimmed in Indiana limestone. The house is of fireproof construction, with solid masonry walls, a full basement and is three stories high. The roof is of heavy slate. The structure built with metal casement windows in keeping with the general style of architecture. An interesting feature of the construction is the oak-covered concrete floor which is built on steel joists. The living room on the ground floor is 23 by 40 feet, with a large bay window on the south, and opens on the west, on a balustraded terrace paved in flagellated slate of different colors. Oak of gray antique finish is used throughout the interior of the house. Ceiling of Oak Beams. Another unusual feature of the house is the beam ceiling of solid hewn oak timbers. The north side of the library is also of solid oak with built-in bookcases. The basement is devoted to a large kitchen, the dining room, which has walls of red quarry tile, a chapter room and the boiler room. The erection of the Delta Upsilon and Sigma Chi houses this year is significant in connection with the ages of the two organizations. Sigma Chi is the oldest fraternity locally, while Delta Upsilon is the oldest national organization on the campus.

the Carnegie biological station, where he collected and studied the queer creatures of the sea. He reported findings ranging from the insignificant star fish to the mighty shark.

Society

With the close of rush week and the beginning of classes social activities are rather quiet. The final rush party for sorority groups was a formal evening party Wednesday evening. Many Greek letter groups are already planning house parties and some have set dates for their formals. Delians Entertain With Lawn Party. Delian Union Literary society entertained twenty-four rushees at a lawn party Wednesday evening at the home of Henrietta Becker. The evening hours were spent informally. Phil Erhart, president, and Alvin Kelso, vice president, welcomed the guests. Games and refreshments were in charge of the hostess who was assisted by Miss Marjorie Dean and Harold Bentzel.

COUNCILS WILL CONTINUE

Frosh Meetings Sponsored By Y. M. C. A. Again, Says Hayes.

Plans for the continuation of freshman councils, both on the city campus and at the agricultural college, have been announced by C. D. Hayes, Y. M. C. A. secretary.

First meeting for the city campus council will be on Wednesday, Sept. 23, from 7 to 8 o'clock. It will be held in the "Y" rooms in the Temple building. Leaders for this group are to be announced later.

Initial council gathering for freshmen on the agricultural campus is on Thursday, the 24th of September at the same hours. It will be held in the "Y" rooms, 303 Ag hall, with Professor Rosenquist as leader.

MANTER RETURNS FROM COLLECTING PARASITIC FISH

Professor Manter, of the zoology department, who for the past two summers has been gathering a collection of tropical parasitic fish at Tortugas, eighty miles from Key West in Florida, has returned for his winter classes, and has brought with him his display of specimens. The professor was situated at

The City Y. M. C. A.

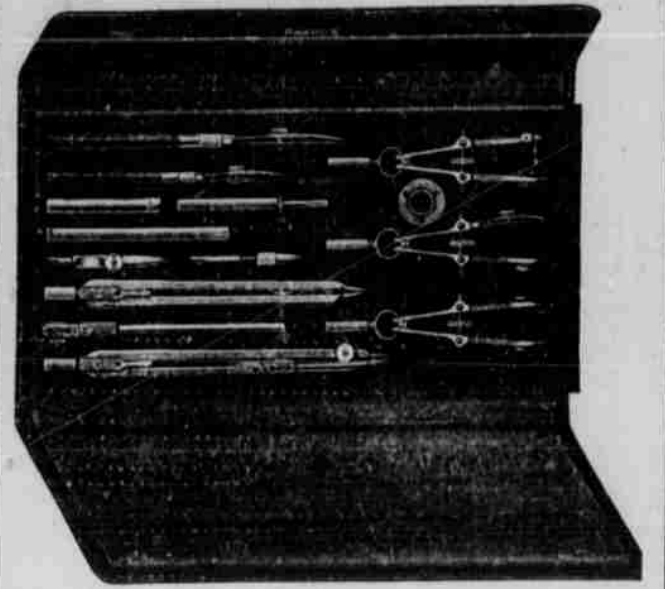
"A Home for the student. Where fellowship abounds. Reasonably priced rooms, conveniently located.

AGNES' BEAUTE SHOPPE

Telephones B-3122 - B-4971 Hotel Cornhusker Lincoln, Nebr.

Advertisement for Isham Jones and his Brunswick Recording Band. Includes text: 'Dancing at 8:30 Hotel Cornhusker Informal \$1.50 the Couple' and a large diagonal graphic reading 'TONIGHT!'.

ENGINEER'S DRAWING SETS



We carry the Drawing Sets and Supplies that are approved by the College of Engineering. These include sets by POST, RICHTER, DIETZGEN, K & E. All endorsed by the faculty.

Largest Stock in the City to Choose From Also Triangles Slide Rules T Squares Curves Drawing Boards And All Other Supplies

LONG'S COLLEGE BOOK STORES FACING CAMPUS

Informal Opening and Reception In Our Beautiful New Beauty Salon Under Well Known Direction Maison Lorenzo

You'll be more than delighted, we wager, at the remarkable transformation in our beauty salon! Almost over-night it became a veritable fairyland of soft light, delicate colors... and best of all Lorenzo Donarico, the nationally famous specialist in the art of cosmetology is at Gold's himself to direct the "Maison Lorenzo."

- A Complete Beauty Service: Permanent Waving, Finger Waving, Hair Cutting, Tinting-Dyeing, Transforma-Bob, Manicuring, Facials, Shampoos.

THIS IS YOUR PERSONAL INVITATION TO ATTEND

We want you to know all about the Maison Lorenzo... to see the perfectly marvelous new equipment... (we're boasting now, but we're proud to say there's none other quite like it)... to go poking around the corners and see for yourself that it's ultra spic and span... to view the new sterilizers (every single thing used in the Maison Lorenzo must first make a trip to the sterilizer)... to know that you can get a permanent at Gold's that will be just exactly like you want it... (there are two brand new permanent machines that are perfect wonders).

AND WE WANT YOU TO KNOW

that work in the Maison Lorenzo is not a bit more expensive... every little service no matter what it is will be given you with the utmost care... the prices will all be moderate! Mr. Lorenzo, as he is known to his many followers, is at Gold's himself to greet you and with the rest of us proudly show you "The Maison Lorenzo"... do come in!

GOLD'S—Fourth Floor

GOLD & CO. LINCOLN'S BUSY STORE

GOLD & CO.

.....Two Campus.....

ENNA JETTICKS

More Than Fifty Other Styles



Arch Support Shoes That Combine Smartness with Fit

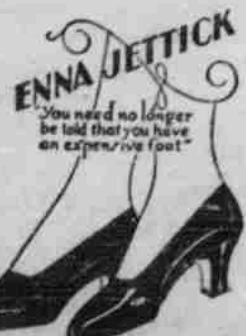


These Shoes come in brown elk or black or brown calf.



AND

A PARTY PATTERN



The pleasingly attractive Pumps shown here come in patent, black moire, black kid!

Strap styles, oxfords, pumps... all may be had in Enna Jetticks at Gold's for \$5 and \$6.

GOLD'S—Second Floor.