

**MEMORIAL IN ACTUAL SIGHT**  
(Continued from page 1)  
and will supervise further work toward the stadium.

**Situation Bright**  
Such is the situation with regard to the University of Nebraska Memorial stadium as it now stands. For some three years, plans have been going forward toward construction of the stadium. Action of the legislature last winter in withdrawing its appropriation for the gymnasium put a crimp in the plans for that structure but has stirred university friends to further efforts to secure a large and up to date athletic field. Prospects for the construction of the stadium have at no time been so bright as now.

**\$25 From Each Student**  
With \$102,386.40 in subscriptions and \$14,740.35 in actual cash now in the hands of the Memorial association, the plans for the raising of the remainder of the \$400,000 needed are going forward with whirlwind velocity. A student drive for funds is to be held in October and in November a state wide campaign will be held.

Each university student is to be asked for a uniform subscription of \$25. This is the same amount as was asked from each member of the senior class last spring. It was decided upon

by a committee of seniors and was fixed at that because they felt it was no more than any student should pay, that it was better to have an average subscription of \$25 than a list varying from \$1 to \$1,000. At Ohio the average subscription was above \$25, at Kansas it was nearly \$60 and at Illinois it was well above \$100 for the students.

Immediately on the heels of the student drive, a state wide campaign for funds will be started. A field organization is now being organized under the direction of Harold F. Holtz, alumni secretary, and plans toward the raising of the necessary funds are going rapidly forward.

The financial status of the Memorial association is good. The subscription total turned over to the alumni by the old association was \$100,208.10. Subscriptions received since that time total \$2,653.50. Payments of \$475.20 have been made on these, leaving a grand total of \$102,386.40 of subscriptions, the major portion of which can be converted into cash whenever needed, now in the hands of the association.

Cash and securities transferred from the old association to L. E. Gunderson, temporary treasurer of the Memorial stadium, total \$14,260.95 and the addition of the \$475.20 and interest to the extent of \$160.27 makes the total receipts of money \$14,896.42. Disbursements have totaled \$156.07 since the money was turned over, leaving a balance of \$14,740.35 in cash now on hand.

The resources of the stadium fund summarized follow:  
Unpaid subscriptions, \$102,386.40  
Cash and securities, 14,740.35

Total \$117,126.75

This statement is that which was prepared from these records of the Memorial association by Wiggins-Babcock company, public accountants. It is the first public statement of the stadium affairs made.

**FOOTBALL OTLOOK ONLY ENCOURAGING**  
(Continued from page 1)

Dawson will be assisted in the coaching by "Bill" Day, Owen Frank and, possibly, Clarence Swanson, all former Husker stars. Farley Young will take charge of the freshmen.

The schedule for 1922:  
October 7, University of South Dakota at Lincoln.

October 21, University of Missouri at Lincoln.

October 25, University of Oklahoma at Norman.

November 4, University of Syracuse at Syracuse.

November 11, University of Kansas at Lawrence.

November 18, Kansas Aggies at Lincoln (Homecoming).

November 25, Iowa State (Ames) at Lincoln.

November 30, Notre Dame at Lincoln. (Thanksgiving).

**Letter Men Back**

"Chick" Hartley, fullback on the 1921 Cornhusker team, will captain the 1922 varsity. Wright is the only backfield man lost from the last year squad. The back positions will be filled from the string consisting of Herb DeWitz, "Bob" Russell, "Dave" Noble, "Red" Layton, Verne Lewellen and Glen Preston, letter men of the 1921 team. A number of freshmen will make bids for backfield positions.

On the line the positions will be filled from the following string of men: Roy Lyman (doubtful), Carl Peterson, Joy Berquist, Adolpa Wenke, Leo Scherer, Raymond Weller, Gordon House, George Klempke, Bryan Nixon, Dewey Hoy and Rose McGlasson, letter men of last year.

Among the freshmen of 1921 who will be out for the varsity this year are "Bud" Randolph, Rufus Oeditz, Noel Rorby, Bloyce Packer, Ladd Hubka, Junior Hinman, Herbert Cheyeron, Eugene McAllister, Paul Cheyney, Ed Levison, "Slick" Outhouse, "Swede" Hummel, Al Raun, Earle Frazier, Herbert Green, Bont Spiece, Schuyler Phelan, Melvin Collins and Joe Shainholtz.

**MANAGERS FOR**

**ALL ATHLETICS**

Continued on Page Four

posed of the director of athletics (Dawson), coach of the individual sport, managers of the individual sport, faculty representative to the Missouri Valley conference (Scott) and the business assistant to the director of athletics (Selleck).

**Applications Due Now**

Men wishing to try out for student managers should send in their applications to J. K. Selleck at the student activities office at once. Names of as many men who intend to try out for the junior assistant and sophomore candidate positions as is possible are wanted. Mr. Selleck wishes to get in touch with them immediately. They will be sent application blanks as soon as they enter their names.

The same eligibility rules as govern athletes will rule for student managers.

**REGISTRATION**

**OUTLOOK BRIGHT**

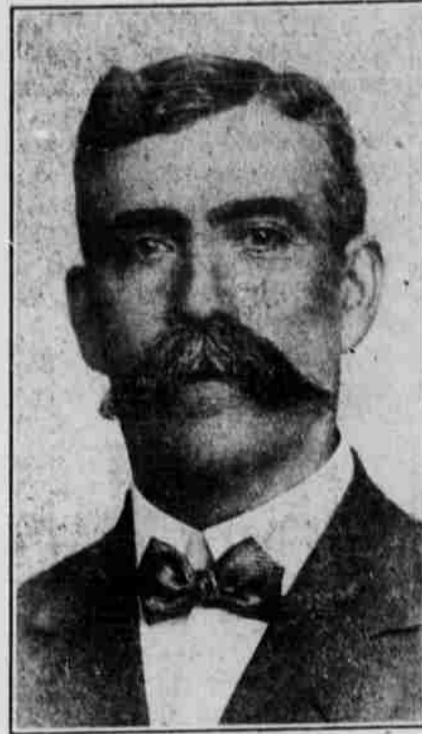
(Continued from page 1)  
Indications are not overly encouraging for a record breaking registration. The record enrollment in the 1921 summer school, which totaled 2,100 the first session and 1,100 the second six weeks, may be taken as an indication that fewer students will enroll this fall or it may be an advance sign of a record enrollment.

If the record for summer students was established because many of the regular students took summer work to prepare to teach or not to return this fall, then the indications are pessimistic. But if the registration is only a forerunner of a record breaking enrollment this fall.

**MRS. MILES TO**

**TEACH POTTERY**

Mrs. Elsie Miles has been appointed to take charge of the work in pottery and modeling in the School of Fine Arts at the university. Mrs. Miles is a graduate of Columbia university. Mrs. Miles is a graduate of Columbia University and has done extensive work in art. She has taught in the universities of Montana and Washington.



The "School Man" Manager

W. E. A. Aul, B. Sc., M. S., A. M.

**Nebraska School Service and Teachers Exchange**

1105 O Street

**SEE US BEFORE YOU LEAVE LINCOLN**

SOME BOARD NEEDS YOU. YOU DESIRE THAT POSITION. BUT THAT BOARD NEEDS US TO GET YOU. AND YOU NEED US TO SECURE THE POSITION. HENCE THIS AGENCY IS RIGHTLY CALLED TEACHERS' EXCHANGE.

OUR SERVICE MADE OUR BUSINESS.

THAT IS WHY WE ARE "NEBRASKA SCHOOL SERVICE".

HIS 25 YEARS' EXPERIENCE LOCATING TEACHERS ENABLES THE MANAGER TO SELECT TEACHER THAT JUST SUITS "PARTICULAR" BOARD.

OUR "CALLS" FROM BOARDS WILL SECURE A HIGH SCHOOL POSITION FOR EVERY TEACHER HAVING HAD TWO YEARS OF "COLLEGE CREDITS," AT SALARY OF \$1125 to \$1400. A 4-YEAR course DEGREEE WILL secure from \$1350 to \$1800.

Normal Training, Latin, Science, Manual Training, Mathematics, or Domestic Science, with some other subject, COMMANDS the highest salaries.

If you can not call at our Office, BE SURE to say it all in your FIRST letter. THEN we will get BUSY.

A good picture helps get the quick election and the high salary. It will pay you to send your picture.

Rooms 3 and 4,

Lincoln, Nebraska

**Travel Goods**  
**C. A. Wirick Co.**  
Exclusive Luggage Shop  
1028 "O" St.

**Teachers and Stenographers**  
**REFERENCE BUREAU**  
J. E. Fate, Manager  
1307 N St. Lincoln

**SOMETHING NEW**  
**JELLY ROLL EXQUISITE**  
After Show, Dances or Drive  
**REMEMBER**  
**THE ALASKA INN**  
33rd & A  
"EVERYTHING COLD"

**CAPITAL ENGRAVING CO.**  
DESIGNERS - PHOTO-ENGRAVERS  
ELECTRICALLY ETCHED  
PRINTING PLATES  
PHONE B4178 LINCOLN, NEBR. 1309 O ST.

**School Clothes---**

Must be clean clothes if you wish to get the utmost satisfaction from them. A thorough cleaning makes them crisp and cool.

BE NEAT!

**CITY CLEANING and DYE WORKS**

PHONE B2301  
1605 "O" St.

H. Raymer, Pres.

W. O. Carlson, Mgr.

PARTICULAR ATTENTION TO UNIVERSITY PARTIES!

"The Place Different"

**PEKIN CAFE**

Service at All Hours

1130 "O"

Upstairs

Look for the Pekin Sign

**NEBRASKA'S FIFTY-FOURTH STATE FAIR & EXPOSITION**  
LINCOLN, SEPT. 3 4-5-6 7-8  
HERE THE BEST IN ALL LINES ARE ASSEMBLED  
THE FAIR OF PROGRESS  
AMUSEMENTS AND MUSICAL PROGRAMS ARE THE BEST  
BACK TO NORMALCY ADMISSION 1/2 DOLLAR RAILROAD FARE ONE AND A THIRD  
FAMILY OUTING - RELAXATION - DIVERSION - EDUCATION.

**STUDENTS OPEN STATIONERY SHOP**

"Chuck" Hall and Ernest Zschau to Cater to Needs of Cornhuskers

In an effort to supply the long felt need for a shop which would supply all university students with individual and organization stationery of the highest type at a minimum of cost, Charles "Chuck" Hall and Ernest Zschau, university students, have rented a corner of the College Book store and opened the "Cornhusker Stationery Shop."

The shop specializes in printing, embossing and engraving for all organizations and for individual university students. Dies of the crests of all fraternities and sororities have been made this summer and the shop can fill stationery orders within two or three days after they are placed.

While the shop has not been generally advertised among university students, it has been doing a moderately rushing business thruout the entire summer. Two months before school closed last spring, orders commenced coming into the shop from some few students who knew of it. The orders have been coming steadily ever since.

Individual stationery of a fine grade is furnished by the "Cornhusker Stationery Shop."

**SODA'S SUNDAES' SERVICE**

**PILLERS' PRESCRIPTION PHARMACY**

The Same Always Excellent  
Twenty-four Hour Service

Thoroughly Remodeled for the Returning Cornhuskers

**GRAND OPENING CENTRAL HOTEL CAFE**  
SEPTEMBER 1 1922

"THE BEST PLACE TO EAT FOR LESS"

Tel. B-2620

1325 P St.

**FELLOW STUDENTS**

We are Now Prepared to Serve You With

**STATIONERY-ENGRAVING-PRINTING-EMBOSSING**

We KNOW We Have the BEST STATIONERY

Our Customers Tell Us We Have the LOWEST PRICE.

COME IN AND SEE FOR YOURSELF

We Emboss Any Of Our Stationery With Your Fraternity Crest

**CORNHUSKER STATIONERY SHOP**

"CHUCK" HALL

ERNEST ZSCHAU