

The Daily Nebraskan

UNIVERSITY OF NEBRASKA OFFICIAL PUBLICATION

EDITORIAL STAFF

Gaylord Davis.....Editor-in-Chief
 Howard Murfin.....Managing Editor
 Jack Landale.....News Editor
 Le Ross Hammond.....News Editor
 Ruth Snyder.....Associate Editor
 Kenneth McCandless.....Sports Editor
 Genevieve Loeb.....Society Editor

BUSINESS STAFF

Glen H. Gardner.....Business Manager
 Roy Wythers.....Assistant Business Manager

REPORTORIAL STAFF

| | | |
|------------------|---------------------|--------------------|
| Patricia Maloney | Gayle Vincent Grubb | Marian Henninger |
| Story Harding | Sadie B. Finch | Margaret Ratcliffe |
| Julia Mockett | Oswald Black | Ruth Wachter |
| Sidney Stewart | Thad C. Epps | Edith Howe |

Offices: News, Basement, University Hall; Business, Basement, Administration Building.

Telephones: News and Editorial, B-2816; Business, B-2597. Night, all Departments, B-4204.

Published every day except Saturday and Sunday during the college year. Subscription, per semester, \$1.

Entered at the Postoffice at Lincoln, Nebraska, as second-class mail matter under the Act of Congress of March 3, 1879.

16

News Editor
LE ROSS HAMMOND
 For This Issue

THANKS TO OMAHA

Through rain and sunshine, mud and slime, gallant guides conducted students in and out all the nooks and corners of Greater Omaha Friday, from ten o'clock in the morning until eleven-thirty in the evening. The keys of the city were in truth handed over to the students, and were used to good advantage in opening the custom locked entrances of art collections, smelters, factories, packing houses and various other interesting places. The day was a continual round of pleasure from the minute of boarding the train until the tired and sleepy homecoming early Saturday morning.

Those who went to Omaha are already looking forward to the time next year when they can go again on another such excursion. The day was a welcome respite from the hard work of the last lap of the academic year. Studious cares were thrown aside and students and faculty joined hands as pals, and "took in" the sights together. No doubt it was a pleasant surprise for some students to find that faculty persons are, after all, only human when they are removed from the learned atmosphere of the class room. The few faculty members who went along enjoyed the trip fully as much as did the students.

The five hundred or more students who journeyed to Omaha are truly grateful to that city for the fine treatment accorded them whole there. No stone was left unturned to provide means of entertainment. The University will not forget such hospitality. We hope that the excursion strengthened the respect of the University and Omaha for each other. We trust that the University created a favorable impression among Omaha business men, and that they will have a better feeling toward college bred men. If these few things have resulted from the Omaha trip, it was indeed worth while.

POST BELLUM EXCESS

What some observers have termed an "insane social season" is now drawing to a close. The approach of warm weather and the end of the school year sound the death knell of what has certainly been one of the most crowded social years at Nebraska. Dating from the beginning of the second semester, there has been a continued succession of formal and informal parties. Not only has every week-end been filled with functions, but also, the mid-week dances have been well patronized by university people. Every conceivable organization of the school has been possessed of the desire to give a formal party. Some societies that have previously refrained from giving dances, have been unable to resist the infection of the times, and have had not one, but several parties. It has been difficult for many organizations to find open dates upon which to give their parties, for the hotels and dance halls have been booked far in advance for the entire school year. Never before has the University witnessed such a superfluity of social functions.

There are many theories which attempt to explain the phenomenon. Perhaps the one most generally accepted, is the one that says the excess of social affairs is the result of the unnatural conditions caused by the war, and that the whole thing is merely the natural aftermath of abnormal circumstances. Unnatural ways of living are usually followed by excesses of one kind or another. The grim reality of war times imposed restrictions upon the social life of the university soldiers, and limited the number of parties to almost nil. When the bonds were loosened and the lid raised, everyone went to the other extreme. It was but natural, and the critics that rail at the so-called extravagances of the past season overlook the inevitable endowments of human nature. We must admit that we have indulged in society to excess, but we could not hold ourselves any more than can starved animals, who eat themselves literally to their death when suddenly they are treated with unlimited quantities of rich foods. Next year, when conditions have returned to their normal, we will witness a more sane and reasoned social season.

WONDERFUL POLITICS

Life wouldn't be half as enjoyable if it were not for the politicians at K. U. Isn't it odd the way some people change?

Perhaps you remember the man who wouldn't think of speaking to you even if he met you face to face on a lonely street, yet by the simple application of this miraculous political lotion, he decides to walk down the Hill with you, year, even buys you a coke. Then again there is the fellow who always makes it a practice to play solitaire with his dances, but on the night of the Prom, keeps only three with his girl. Still another, the same individual who has the reputation of borrowing everything from a match to a clean collar, comes out in a fearless manner with "smokes for all."

As a smiling politician greets you tomorrow, just recall that old familiar phrase and say to yourself, "ain't nature wonderful?"—Daily Kansan.

Society

SOCIAL CALENDAR

May 2—

Pi Beta Phi held its annual formal party at the Lincoln Hotel. Eighty couples attended. The decorations were in rainbow colors.

The chaperones were Mr. and Mrs. A. W. Richardson, Mr. and Mrs. Archer Bunting, Mr. and Mrs. A. R. Talbot, Prof. and Mrs. A. A. Reed, and Dr. and Mrs. E. J. Stewart. Guests from out-of-town were Miss Martha Morton, Miss Mary Larsh, Nebraska City; Miss Mary Henderson, Miss Dorothy Mansfield, York; Miss Hazel Kline, Miss Leah Shaw, Hastings; Miss Pauline Prime, Holdrege; Miss Donna McDonald, Miss Isabel Pearsall, Miss Betty Kennedy, Miss Helen Adkins, Miss Frances Cleland, Omaha; Miss Edith Neal, Auburn; Miss Janice Bowers, Falls City; Miss Catherine Lalley, Miss Lucille Johnson, Miss Hael Beutal Dennison, Ia.; Miss Helen Seibert, Miss Helen Smith, Miss Eva Hoagland, Miss Marjorie Russell, North Platte; Miss Pauline Moore, Miss Muriel Allen, Tecumseh; Miss Erma Shaw, Osceola.

The tenth annual banquet of Alpha Chi Omega was held at the Lincoln Hotel. Eighty-one active and alumnae members attended. Apple blossoms and pink roses were used to decorate the tables.

Mrs. William Brainard was toast-mistress for the following list of toasts: "The Standard," Miss Lois Melton; "The Base," Miss Grace Harris; "The Strings," Miss Grace Luffkin; "Precious Metals," Miss Fae Breese; "Jewels," Miss Winifred Williams; "The Scroll," Mrs. William Heinzelman. The out-of-town alumnae present were Miss Marjorie Hesselme, Miss Irene Maranville, Vancouver, Wash.; Miss Inez McDowell, Mrs. William Heinzelman, Lyon; Miss Bernice Bell, St. Paul; Miss Mary Smith, York; Mrs. Harold Holtz, Council Bluffs; Mrs. Burton Whitmore, Mrs. N. E. Johnson, Mrs. R. O. Webster, Valley; Mrs. William Brainard, Fairbury; Miss Marian Castle, Miss Marie Cusack, North Bend; Miss Grace Horner, Beatrice; Mrs. Leland Dale, David City; Mrs. Dale Boyles, Mrs. Carl Gantz, Alvo; Miss Doris Arnold, Excelsior Springs, Mo.; Mrs. Vincent Hascall, Omaha.

May 3—

Miss Amanda Heppner was at home to all of the girls in the senior class. The living room, dining room and sun parlor of her home were decorated with baskets of roses tied with white tulle bows. The same pink and white color scheme was carried out in the refreshments. The first hour Mrs. C. C. Engberg cut the ice cream, Mrs. R. G. Clapp poured coffee, Miss Marguerite McPhee and Miss Clara Conklin directed the guests to the dining room and Miss Winifred Hyde directed them upstairs. The second hour Mrs. Paul Grumman cut the ice cream, Mrs. Samuel Avery poured coffee, Miss Florence McGahey and Mrs. T. F. A. Williams directed the guests to the dining room and Miss Bessie Williamson directed them upstairs.

Bushnell Guild held its sixth annual banquet at the Commercial Club. Covers were laid for fifty. The decorations were in brown and gold. The evening was devoted to the honor of the sixty-four members of the organization who were in the service. The following toasts were given: "Cantonments," Dr. E. L. Hinman; "Embarkation," A. A. Wilkins; "Trenches," W. A. Selleck; "Victory," A. C. Krebs; "Demobilization," Walter Judd; "Back on the Job," E. J. Hainer. The out-of-town alumni present were Lyle Zeigler, O. N. Clark, Beaver Crossing; Louis McReynolds, Ashland; A. C. Krebs, Clay Center; L. E. Uden, Hastings; Glenn Reeves, Omaha; E. F. Reed, Fort Sheridan; and Faye Merriam, Seward. The honor guests were E. J. Hainer, W. A. Selleck, Landy Clark, O. J. King, H. H. Wilson, Dr. E. L. Hinman, Prof. H. E. Bradford, S. H. Burnham, and G. A. Loveland.

May 3—

The annual formal party of Alpha Chi Omega was held at the Lincoln Hotel. Eighty couples attended. The ball room was decorated with cherry blossoms and palms. At one end of the room was a "lyre," the sorority emblem. Prof. and Mrs. G. E. Condra, Mr. and Mrs. E. H. Polley, Mr. and

(Continued on Page Four)

MEN

With Lots of Resourcefulness, initiative, determination, and hard work in their system can make \$500.00 with us this summer. Write P. O. Box 237, Lincoln, Nebraska.



Hardy Smith Barber Shop

WE USE A CLEAN TURKISH TOWEL ON EACH CUSTOMER

WITH AUTOMATIC STERILIZER AT EACH CHAIR EIGHT CHAIRS

116 NORTH 13TH STREET

Orpheum Drug Store

OPEN TILL MIDNIGHT

A Good Place for Soda Fountain Refreshments after the Theatre and after the Rosewilde Dance

CARSON HILDRETH, '95 and '96

OUR "NO SALE POLICY" MAKES IT POSSIBLE TO SELL

Waist Seam Suits

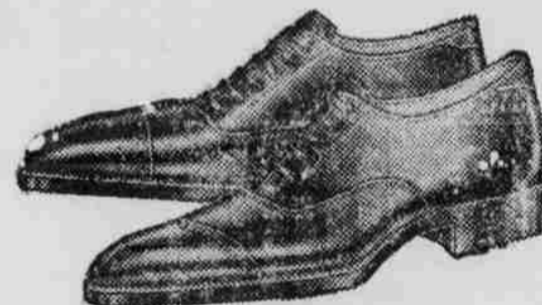
Flannels ^{SILK} LINED \$37.50

FLANNEL PANTS IN BLUE, GREEN AND BROWN—\$7.85

"THE TROOPER"

with or without tips, in Cordovan Shade, the college man's shoe—

\$9 and \$10



Ladies' Shoe Department

Combination Lace and Colonial, Long Vamp—Extrame High Louis Heel, in Dull Kid, Grey, Field Mouse and Havana Brown



Priced \$9.00 to \$12.00

—All colors and Fancy Ladies' Hose—at money saving Prices.

Speter & Simon
 Daylight Clothing Store

Viking Pins
 Black Masque Pins
 Silver Serpent Pins
 Mathematic Club Pins
 All Kinds of
 Society—Sorority & Fraternity
 Jewelry

HALLETT

Uni Jeweler
 Est. 1871 1143 O

DAWSON'S ORCHESTRA

For your house and party dances
 Everything in Music

PHONES
 F1874 Box—217J

J. Dawson A. Williams