

**C. ROY MILLER, For Foot Comfort**  
 410 Ganter Building Phone B3781  
 Adjustment of Fallen Arches, removal of Corns and Ingrowing Nails and the relief of Bunions.  
**COMFORT SHOES**

**Oliver Theater**  
 This Week, Twice Daily, The Truth of Birth Control  
**"THE UNBORN CHILD"**  
 Mats. for Ladies ONLY  
 Mats. 35c & 25c; Night 75c to 25c

**Orpheum**

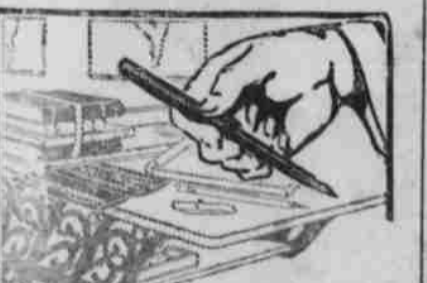
MONDAY-TUESDAY-WEDNESDAY  
 5 acts—Western Vaudeville—3 shows  
 Matinees 2:30; Evenings 7:00 & 9:00  
**HERMAN LIEB AND HIS BROADWAY PLAYERS**  
 In Joseph Medill Patterson's One-Act Classic  
**"DOPE"**  
 AL WOHLMAN & CO.  
 America's Favorite Song Writer  
 E. T. ALEXANDER & CO.  
 A Novelty in a Vaudeville Way  
**HARRY LA TOY**  
 The Talkative Juggler  
**MISS GILLIS & CO.**  
 The Perfect Lady Hercules  
 Travel Weekly Orpheum Orchestra  
 Matinees—15c Nights—25c

**LYRIC THEATRE**  
 VAUDEVILLE & PHOTO-PLAYS  
 MONDAY-TUESDAY-WEDNESDAY  
**ARMSTRONG & SMITH**  
 In "THE BAGGAGE MAN"  
**STEIN, HUME & THOMAS**  
 Vaudeville's Greatest Singing Trio  
**"PEARL OF THE ARMY"**  
 Fox Comedy—News Weekly  
 Time—2:00, 7:00, 9:00  
 Matinees—10c Nights—15c

**MAJESTIC**  
 MONDAY-TUESDAY-WEDNESDAY  
 Hawthorne's Classic  
**"THE SCARLET LETTER"**  
 WITH **STUART HOLMES**  
 As Parson Dimmesdale  
**EARLE WILLIAMS** In  
**"THE SCARLET RUNNER"**  
 TIME—1:30, 3:15, 7:15, 9:00  
 Adults—10c Children—5c

**Have Your Films Developed**  
 By **FRK. MACDONALD**  
 Commercial Photographer  
 1309 O St. Room 4 Lincoln Nebr.

Quick Service **Open at All Times**  
**Orpheum Cafe**  
 Special Attention to University Students



**Bring in Your List Of School Supplies**  
 WE have all the things you need for school—text books, drawing materials, tablets and other supplies, including the **CONKLIN Self-Filler** so well adapted to students use.  
 Students everywhere say this efficient fountain pen means better work and better grades.  
**Conklin's Self-Filling Fountain Pen**  
 NON-LEAKABLE

**KOMO—EUREKA COALS**  
 That you'll like  
**TRY US**  
**Whitebreast Coal & Lumber Co.**  
 Phone B3228 107 N. 11th

**ALPHA PHI AND FARM HOUSE CLOSED**  
 (Continued from Page 1)

epidemic prevails. This makes it necessary to conduct a thorough examination of the ones handling the raw milk as well as the dairies and the cows producing the milk. If all milk was properly pasteurized this investigation would be unnecessary.  
**Started With Student**  
 "The beginning of the excessive number of cases emanated from a University student who became ill with scarlet fever January 15. The present number of cases resulted from direct contact with ones having the disease before being detected and quarantined. There have occurred no cases from those in quarantine.  
 "In conclusion we would advise those who become ill, having a sore throat to isolate themselves, call a doctor and adhere strictly to his advice. To those who have knowingly been exposed, have scarlet fever vaccine administered. Late today we expect to have a supply on hand and will accommodate those exposures who have failed for any reason to consult their family physician."

**Washington.**—What seems to be the unquestionable championship of long distance date refusals is held by a Washington co-ed, a member of a prominent sorority having a chapter here. The young lady in question was asked by a young man to attend a formal dance on June 5, 1918, but the mill could not be arranged because she already had the date filled.—Ex.

**VENUS 10¢ PENCIL**

No matter what course you're taking you need this famous pencil!  
**BECAUSE** of the superlative quality of material and workmanship, VENUS is admittedly the finest pencil it is possible to make.  
 If you like a thick soft lead that marks so that you can read the writing half way across the room, choose the soft degrees 6B—5B—4B.  
 For short-hand notes or easy writing 3B—2B—B (medium soft) are popular.  
 For sketching, general writing purposes, etc., HB—F—H—2H (medium) will prove desirable.  
 For drafting, a medium hard pencil gives the best results and you'll like 3H—4H—5H—6H.  
 For very thin, narrow lines for extremely accurate graphical charts, maps, details, etc., 7H—8H—9H are available.  
 Look for the distinctive water mark finish on each of the 17 black degrees and hard and medium copying.  
 Your professors will confirm these statements as to the merits of VENUS pencils.

For sale at **THE COLLEGE BOOK STORE**  
 This box of VENUS samples free. State the course you are taking  
**FREE**  
**AMERICAN LEAD PENCIL CO.**  
 215 Fifth Ave. Dept H H, New York

**SOCIETY**

**SOCIAL CALENDAR**

**March 2**  
 Delta Zeta banquet—Lincoln.  
 Sigma Nu dance—Lincoln.  
 Phi Delta Phi dance—Lindell.  
 Kansas club dance—Faculty hall.  
 Pre-Medie hop.  
 Beta Theta Pi house dance.

**March 3**  
 Alpha Phi banquet—Lincoln.  
 Delta Zeta formal—Lincoln.  
 University night—Auditorium.  
 Sigma Nu banquet—Lincoln.

**PERSONALS.**

Regina Powers, '18, is ill at the Delta Delta house.  
 Betty Drake, '13, of Beatrice visited friends in Lincoln Monday.

Ruth Weller, '19, and Helen Tooley, '19, are going to Omaha Friday.

Marie Appleman, '18, went to Alvo Friday to visit her parents over Sunday.

Phi Delta Phi, legal fraternity, announces the pledging of Terrance A. Lonan, '19, Lincoln.

Florence Cumingore, '20, from Wesleyan has been visiting at the Alpha Delta Pi house this week.

Golden Rule, '19, and Lotus McCague who has been visiting in Lincoln, left Tuesday for Harlan, Ia.

E. P. Hinds, '15, now with the Empire Oil and Gas company, Bartlesville, Okla., visited at the University yesterday.

Vaughn Gaddis, '20, Gene Nelson, '19, and James Boyd, '20, are going to Omaha Saturday to attend the automobile show.

Lloyd Palmer, '19, of Tekamah, who was called home a few weeks ago by the serious illness of his mother, has returned to school.

Harold Patterson, '20, who has been ill at the Phi Gamma Delta house for the last few days, will be able to return to school this week.

John Wenstrand, '18, and Norval Diehl, '20, left yesterday for Stratton, where they will attend the wedding of Wenstrand's brother, W. W. Wenstrand, '13, of Wahoo, and Diehl's sister, Breta Diehl, '13. Miss Diehl is a member of Alpha Omicron Pi and Wenstrand is a member of Alpha Tau Omega.

**119 TEAMS FINAL TOURNAMENT NUMBER**

(Continued from Page One)

The drawings for the first rounds in the different classes, and the time and place of the game, follow.

**Class A**  
 Division I—All games Wednesday afternoon in the Armory: Lincoln vs. Wilber; Arlington, drew a bye; South Omaha high vs. University Place; Wahoo vs. Kearney; Sutton vs. Humboldt; Crete vs. Hebron; Schuyler, drew a bye; Geneva vs. Beatrice.

**Division II**—All games Wednesday afternoon in the Armory: School of Agriculture vs. Harvard; Norfolk, drew a bye; Osceola, drew a bye; Columbus, drew a bye; Omaha Central high vs. Nebraska City; Stanton, drew a bye; Fremont vs. Holdrege; Friend vs. Gothenburg.

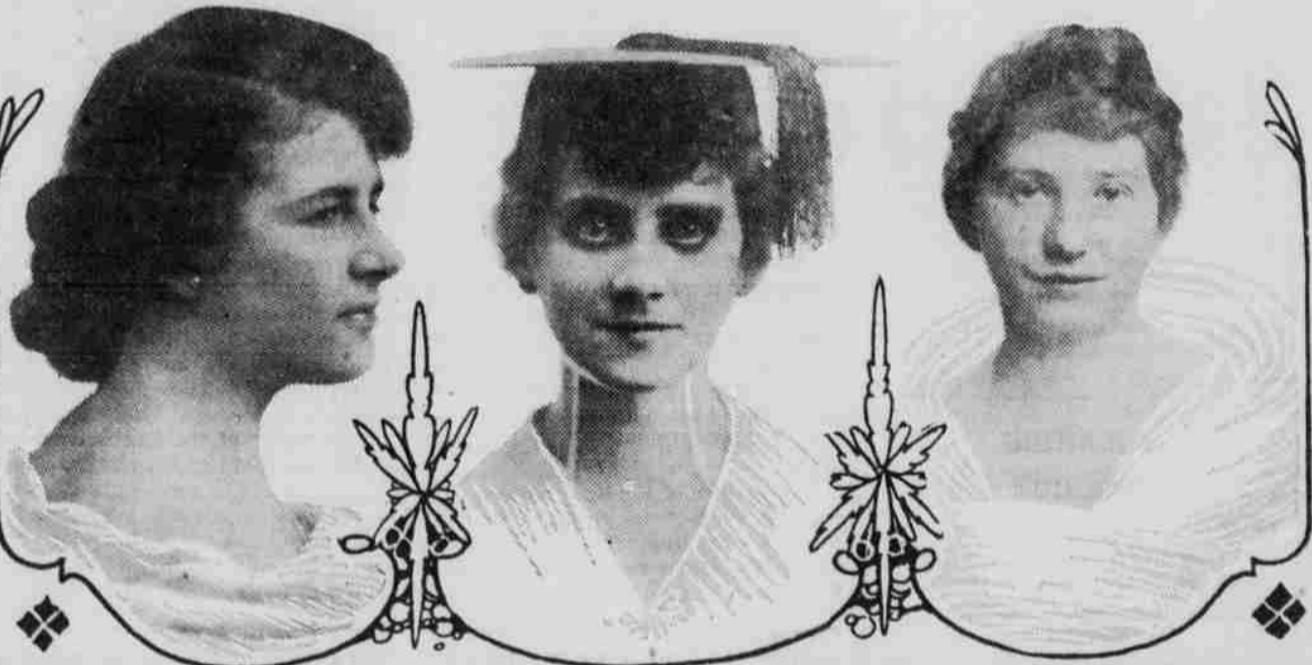
**Class B**  
 Division I—All games played on the Y. M. C. A. floor Wednesday afternoon: Falls City vs. Cedar Rapids; Clearwater vs. Central City; Havelock vs. Wisner; Ong vs. Bethany; Hebron Academy vs. Superior; West Point vs. Shelton; Franklin vs. Seward; Ravenna vs. Ord.

**Division II**—All games played Wednesday afternoon and evening at the Ewing vs. Chadron; Dunbar vs. Milligan; Nebraska School for the Deaf vs. Y. M. C. A.; Minatare vs. Auburn; Swanton; Hastings vs. Lynch; Hardy vs. Sidney; Newman Grove vs. Exeter; Omaha high school of commerce vs. Randolph.

**Class C**  
 Division I—All games played Wednesday afternoon in the Chapel: Minden vs. Alma; Silver Creek, drew a bye; Fairmont vs. Ansley; Coleridge

**READY!**  
 The Exclusive  
**"HEID CAPS"**  
 \$1 to \$3  
**ARMSTRONG'S**  
 Good Clothes Merchants

vs. Culbertson; Fairbury vs. Arnold; Bancroft vs. Halgier; Steele City vs. Rushville; Brady vs. DeWitt.  
 Division II—All games played Wednesday afternoon and evening in the Chapel: Lexington, drew a bye; O'Neill vs. Scribner; Weeping Water vs. Nelson; Pierce vs. Chester; Genoa vs. Elmwood; Hays County high school school.  
 Division IV—All games played Thursday morning in the Chapel: Clarkson, drew a bye; Edgar vs. Holbrook; Kenesaw vs. Giltner; Battle Creek vs. Alexandria; Merna vs. Valparaiso; Cedar Bluffs vs. Bertrand; Papillion vs. Crawford; Humphreys vs. Carroll.



**MISS ELIZABETH ERAZIM MISS MARGUERITE KAUFFMAN MISS VALENTINE MENFORD**  
 THREE CO-EDS BEFORE THE PUBLIC EYE  
 Elizabeth Erazim, of Ravenna, has the leading role in the Junior play, "Green Stockings."  
 Marguerite Kauffmann, of Hardy, newly-elected senior president, is the first co-ed ever to receive that honor since the Australian ballot system was introduced into University politics.  
 Valentine Minford, '18, Elmwood, is the new president of the University Y. W. C. A. cabinet for the coming school year.

**THE UKULELE**  
 THE languorous charm of the Hawaiian native instruments—so moving in appeal, so observably in vogue—is strikingly characteristic of the Ukulele. Its tone possesses that curiously beautiful timbre, that exotic charm of tonal quality which has made these instruments so sensation-ally popular.  
 The Ukulele has a pleasing grace of form. The finer models are made of genuine Hawaiian Koa wood. It is much in request today among the smarter college and other musical organizations.  
 It is easy to learn. Its price includes an instruction book.  
**Hawaiian Steel Guitar**  
 Every chord struck upon this typically representative Hawaiian instrument is marked by a weird, plaintive harmony and strangely beautiful qualities of tone. It brings, to any music, qualities full of vivid color and varied charm.  
 Price \$8.00 and upwards, including steel and set of three thumbies for playing, and instruction book.  
 Catalogs on application.  
**LYON & HEALY**  
 51-67 JACKSON BOULEVARD CHICAGO