

Hayden & McCartneys

Wholesale and Retail Dealers in

GENERAL MERCHANDISE,

Dry Goods, Boots and Shoes,
Clothing, Hats and Caps.

Fancy and Staple Groceries.

Hams, Bacon, Lard, Flour, Corn Meal.

Fine Tobacco and Cigars.

McCook and Indianola, Nebraska.

Arapahoe STAR MILLS FLOUR.

This Flour is Warranted to be

The Finest in the Market.

→→SOLD BY←←

Hayden & McCartneys, Agents

McCOOK and INDIANOLA, NEBRASKA.

HOW WE BUILD A NEW CITY IN THE

FAR WEST AND

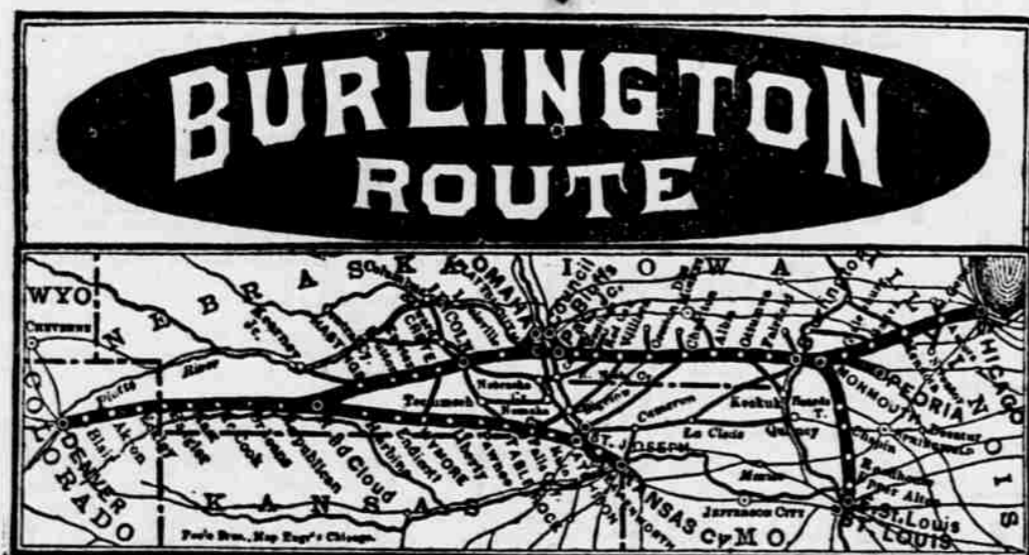
OFFER RARE CHANCES

FOR THE

ARTISAN, TRADESMAN & SPECULATOR.

THE TOWN OF M'COOK

In Red Willow County, Nebraska, has been surveyed, and lots in the market, for just one year and has now a population of 1000 people. This point has been designated by the C. B. & Q. as the DIVISION STATION between the MISSOURI RIVER & DENVER, where the principal shops, a 15 stall round house and other R. R. facilities have been located on the Denver Line. A complete system of water works costing \$25,000 is just being completed giving all the facilities for comfort possessed of old cities. Lots will range in price from \$150 to \$500 for business lots, and \$50 to \$200 for residence lots. The history of points like McCook show an increase of more than three hundred per cent. in from one to five years, and this town promises to be an exceptional chance for investments. For further particulars apply to R. O. PHILLIPS, Or W. F. WALLACE, Secretary, Lincoln, Neb. McCook, Nebraska.



EASTWARD.
Daily Express Trains for Omaha, Chicago, Kansas City, St. Louis, and all points East. Through cars via Peoria to Indianapolis. Elegant Pullman Palace cars and day coaches on all through trains, and dining cars east of Missouri River.

WESTWARD.
Daily Express Trains for Denver, connecting in Union Depot for all points in Colorado, Utah, California and the entire West. The advent of this line gives the traveler a New Route to the West, with scenery and advantages unequalled elsewhere.

Through tickets at lowest rates are on sale at all the important stations, and baggage will be checked to destination. Any information as to rates, routes or time tables will be cheerfully furnished upon application to any agent, or to P. S. EUSTIS, General Ticket Agent, Omaha, Neb.

FREES & HOCKNELL,

PROPRIETORS OF THE

CHICAGO LUMBER YARD.

— || DEALERS IN || —

Lumber, Lime, Cement, Sash, Doors, Blinds,
Hard and Soft Coal.

YARDS AT McCook, Indianola, Cambridge, Arapahoe, and Oxford.

B. & M. PHARMACY.

FINE TOILET ARTICLES.

Wines and Liquors Will be Sold Only in Cases of Sickness,
and then Only on Physician's Prescription.

Prescriptions Carefully Compounded.

EITHER DAY OR NIGHT.

Tansill's Punch, America's Finest 5c. Cigar.

WILLEY & CO., McCOOK, NEB.

CITIZENS' BANK OF McCOOK

— DOES A GENERAL —

BANKING BUSINESS

Collections made on all accessible points. Drafts drawn directly on the principal cities of Europe. Taxes paid for Non-Residents. Money to loan on Farming Lands, Village and personal property. Fire Insurance a specialty.

Tickets for Sale to and from Europe.

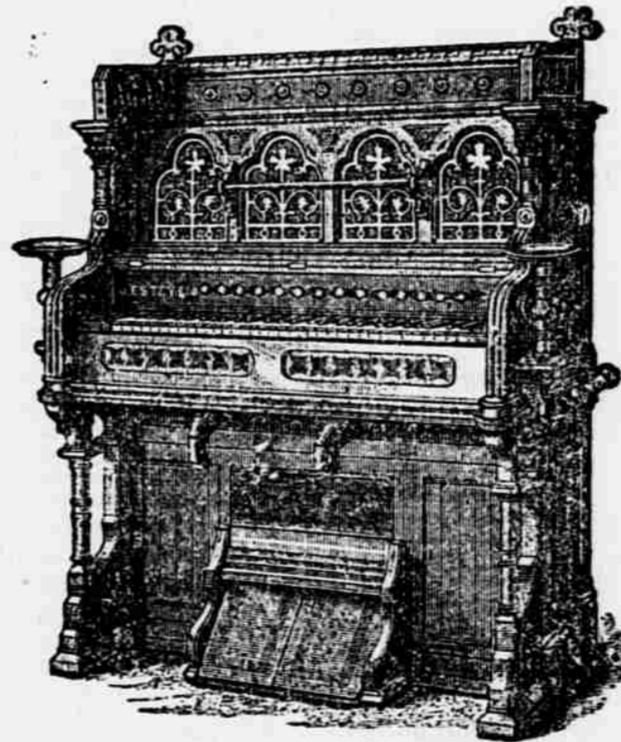
CORRESPONDENTS:
First National Bank, Lincoln, Neb.
Chase National Bank, New York.

OFFICERS:
J. W. DOLAN, President.
V. FRANKLIN, Vice President.
W. F. WALLACE, Cashier.

M. A. SPALDING,

AGENT FOR THE

ESTEY ORGANS.



STORY & CAMP

Sold low for cash, or on easy payments, or rented until the rent pays for the organ.

Catalogue With Price-List and Full Description Free.

M. A. SPALDING, Agent.

McCOOK, NEBRASKA.

BERGER'S Great Western Furniture Emporium.

Bed Steads, Sofas, Chairs,
Looking Glasses,
Bureaus, What-Nots, Carpet,
Burial Cases, Coffins
And Coffin Trimmings, Etc.

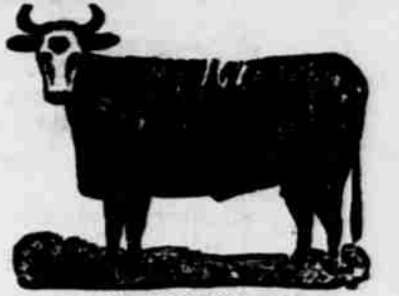


AGENT FOR THE
VICTOR, HOUSEHOLD,
AND THE
DIAMOND SEWING
MACHINES.

J. E. BERGER, Proprietor,

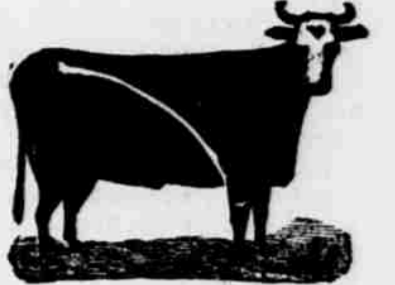
McCOOK, NEB.

STOCK DIRECTORY.

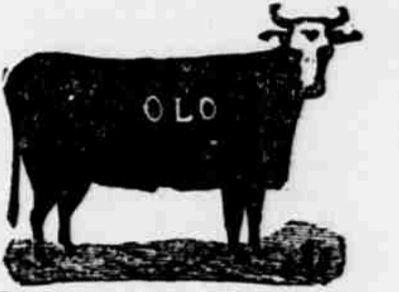


C. D. PHELPS.

Range: Republican Valley 4 miles west of Culbertson, south side of Republican. Stock branded "11" and "7-L". P. O. Address, Culbertson, Neb.

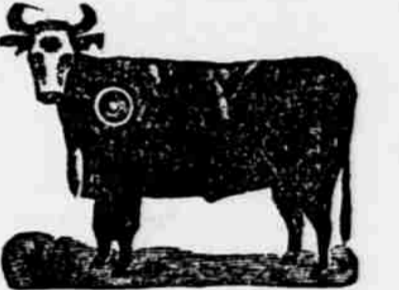


FOR SALE.—My range of 1000 acres of deeded land in one body, including the black and fly-kill hay lands; timber and water with two good farm-houses and other improvements. Convenient to No. one school privileges. Situated in the Republican valley west of Red Willow creek. Call on or address, J. F. BLACK, Red Willow, Neb.



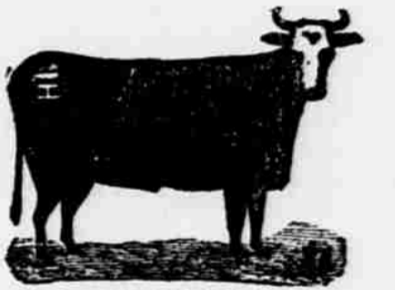
HENRY T. CHURCH.

Osborn, Neb. Range: Red Willow creek in southwest corner of Frontier Co., cattle branded "O L O" on right side. Also, an over crop on right ear and under crop on left. Horses branded "8" on right shoulder. 2-17.



W. J. WILSON.

Stock brand—circle on left shoulder; also dewlap and a crop and under half crop on left ear, and a crop and under bit in the right. Ranch on the Republican. Postoffice, Max, Dundy county, Nebraska. 4-17



John Hatfield & Son

McCook, Neb., Ranch 4 miles south-east, on Republican river. Stock branded with a bar and layz on left hip. 2-5



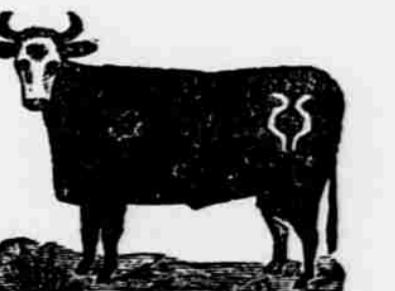
GEORGE J. FREDERICK.

Ranch, 4 miles southwest of McCook, on the Platte river. Stock branded "A" on the left hip. P. O. address, McCook, Neb. 22-17.



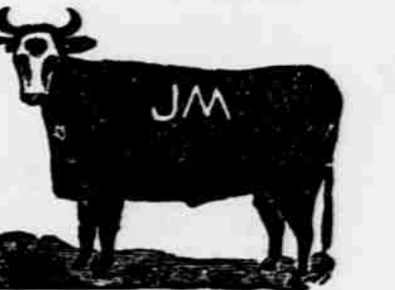
W. N. PROCTOR.

McCook, Neb., range: Red Willow creek in southwest corner of Frontier county. Also, E brand on right hip and side and swallow-fork in right ear. Horses branded E on right hip. A few branded "A" on right hip. 4



The Turnip Brand.

Ranch 2 miles north of McCook. Stock branded on left hip, and a few double cross on left side. C. D. ERICSSON.



DENNIS MCKILLIP.

Ranch on Red Willow, Thornburg, Hayes County, Neb. Cattle branded "J. M." on left side. Young cattle branded same as above, also "J." on left jaw. Under-slope right ear. Horses branded "E." on left shoulder. 3-11.