

Hayden & McCartneys

Wholesale and Retail Dealers in

GENERAL MERCHANDISE,

Dry Goods, Boots and Shoes, Clothing,
Hats and Caps.

Fancy and Staple Groceries.

Hams, Bacon, Lard, Flour, Corn Meal.

Fine Tobacco and Cigars.

McCook and Indianola, Nebraska.

NEW GROCERY STORE

To The Public!

I have just opened out a complete line of

Staple and Fancy Groceries

Choice Segars and Confectioneries

IN THE

P. O. BUILDING!

I respectfully invite the public to call and give
me a trial. I will not be undersold.

McCook, Nebraska.

20.

J. P. ISRAEL.

Arapahoe STAR MILLS FLOUR.

This Flour is Warranted to be

The Finest in the Market.

Hayden & McCartneys, Agents

McCOOK and INDIANOLA, NEBRASKA.

HOW WE BUILD A NEW CITY IN THE

FAR WEST AND

OFFER RARE CHANCES

FOR THE

ARTISAN, TRADESMAN & SPECULATOR.

THE TOWN OF M'COOK

In Red Willow County, Nebraska, has been surveyed, and lots in the market, for just one year and has now a population of 1000 people. This point has been designated by the C. B. & Q. as the DIVISION STATION between the MISSOURI RIVER & DENVER, where the principal shops, a 15 stall round house and other R. R. facilities have been located on the Denver Line. A complete system of water works costing \$25,000 is just being completed giving all the facilities for comfort possessed of old cities. Lots will range in price from \$150 to \$500 for business lots, and \$50 to \$200 for residence lots. The history of points like McCook show an increase of more than three hundred per cent. in from one to five years, and this town promises to be an exceptional chance for investments. For further particulars apply to R. O. PHILLIPS, Secretary, Lincoln, Neb.

Or W. F. WALLACE,

McCook, Nebraska.

THE B. & M. PHARMACY.

—A COMPLETE LINE OF—

Toilet Articles.

Wines and Liquors Will be Sold Only in Cases of Sickness,
and then Only on Physician's Prescription.

PRESCRIPTIONS CAREFULLY COMPOUNDED,
EITHER DAY OR NIGHT.

Tansill's Punch, America's Finest 5c. Cigar.

WILLEY & CO., McCOOK, NEB.

CITIZENS' BANK OF McCOOK

—DOES A GENERAL—

BANKING BUSINESS

Collections made on all accessible points. Drafts drawn directly
on the principal cities of Europe. Taxes paid for Non-Residents.
Money to loan on Farming Lands, Village and personal
property. Fire Insurance a specialty.

Tickets for Sale to and from Europe.

CORRESPONDENTS:

First National Bank, Lincoln, Neb.
Chase National Bank, New York.

OFFICERS:

J. W. DOLAN, President.
V. FRANKLIN, Vice President.
W. F. WALLACE, Cashier.

FREES & HOCKNELL,

—PROPRIETORS OF THE—

CHICAGO LUMBER YARD.

DEALERS IN

LUMBER, LIME, CEMENT, SASH, DOORS, BLINDS & COAL.

YARDS AT:

McCook, Indianola, Cambridge, Arapahoe, and Oxford.

BERGER'S

Great Western Furniture Emporium.

Bed Steads, Sofas, Chairs,
Looking Glasses,
Bureaus, What-Nots, Carpet,
Burial Cases, Coffins
And Coffin Trimmings, Etc.



AGENT FOR THE
VICTOR, HOUSEHOLD,
AND TIRE
DIAMOND SEWING
MACHINES.

J. E. BERGER, Proprietor,

McCOOK, NEB.

BURLINGTON ROUTE



EASTWARD.
Daily express trains for Omaha, Chicago, Kansas City, St. Louis, and all points east. Through cars via Peoria to Indianapolis. Elegant Pullman Palace cars and day coaches on all through trains, and dining cars east of Missouri River.

Through Tickets at lowest rates are on sale at all the important stations, and baggage will be checked or time tables will be cheerfully furnished upon application to any agent, or to

WESTWARD.
Daily express trains for Denver, connecting in Union Depot for all points in Colorado, Utah, California and the entire West. The advent of this line gives the traveler a New Route to the West, with scenery and advantages unequalled elsewhere.

P. S. ECSTIS, General Ticket Agent, Omaha, Neb.

\$100.00 A WEEK!

We can guarantee the above amount to
nood, active, energetic

Agents!

Ladies as well as gentlemen, make a success
in the business. Very little capital required.
We have a household article as salable as flour.

IT SELLS ITSELF

It is used every day in every family. You do
not need to explain its merits. There is a rich
harvest for all who embrace this golden opportunity.
It costs you only one cent to learn
what your business is. Buy a postal card and
write us, and we will send you our prospectus
and full particulars

FREE! FREE!

And we know you will derive more good than
you have any idea of. Our reputation as a
manufacturing company is such that we can
not afford to deceive. Write to us on a postal
card and give your address plainly and receive full
particulars.

16-1yr.

WILLARD'S HOTEL,

WASHINGTON, D. C.

The popular palace hotel of the National Capital.
Conveniently located and accessible to all the street
car lines of the city. Open all the year.

O. G. STAPLES, Proprietor.
25-1mo. Late of the Thousand Island House.



J. B. MESERVE.

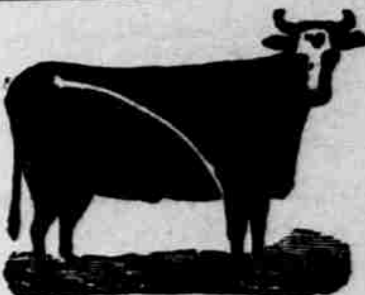
Ranch, Spring Canyon on the Frenchman River in
Chase county, Neb. Stock branded as above; also
"717" on left side; "4. L." on left hip; "7" on
right hip and "12" on right shoulder; "1" on left
shoulder and "2" on left jaw. Half under-crop left
car, and square crop right car.

BUCKEYNE MFG CO.,
Marion, Ohio.



C. D. PHELPS.

Range: Republican Valley 4 miles west of
Culbertson, south side of Republican. Stock
branded "11" and "7-L." P. O. Address,
Culbertson, Neb. 22-17.



HENRY T. CHURCH.

FOR SALE.—My range of 1000 acres of deeded
land in one body, including the Black and Byfield hay
lands; timber and water with two good farm houses
and other improvements. Convenient to No. one
school privileges. Situated in the Republican valley
west of Red Willow creek. Call on or address,
J. F. BLACK, Red Willow, Neb.



W. J. WILSON.

Osborn, Neb. Range: Red Willow creek in
southwest corner of Frontier Co., cattle branded
"O L O" on right side. Also, an over crop on
right ear and under crop on left. Horses brand-
ed "8" on right shoulder. 2-4-1.



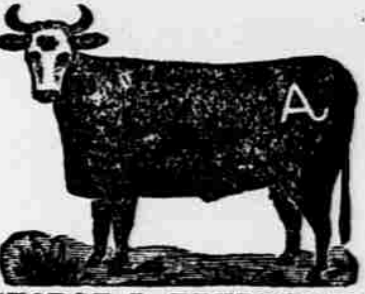
JOHN HATFIELD & SON.

Stock brand—circle on left shoulder; also dewlap
and a crop and under half crop on left ear, and a crop
and under bit in the right. Ranch on the Republican.
Postoffice, Max, Dundy county, Nebraska. 4-17



GEORGE J. FREDERICK.

Ranch, 4 miles southeast of McCook, on the
Republican river. Stock branded with a bar
and layz r on left hip. 2-5



W. N. PROCTOR.

McCook, Neb., range: Red Willow creek in
southwest corner of Frontier county. Also, E
P brand on right hip and side and swallow-fork
in right ear. Horses branded E P on right hip.
A few branded "A" on right hip. 4



THE TURNIP BRAND.

Ranch 2 miles north of McCook. Stock brand-
ed on left hip, and a few double cross on left side
12-17.



DENNIS MCKILLIP.

Ranch on Red Willow, Thornburg, Hayes County,
Neb. Cattle branded "J. M." on left side. Young
cattle branded same as above, also "J." on left jaw.
Under-slope right ear. Horses branded "E." on left
shoulder. 3-14.



EDSON BROS.

Patent Lawyers.
WASHINGTON, D. C.

Specialty: Patent cases before the Patent Office
and the Courts. Reasonable terms. Opinion as to
patentability, free of charge. Send for circular.