



There's no prettier drive out of Omaha than this stretch of the old, oak lined Bellevue road. Dewell photo.



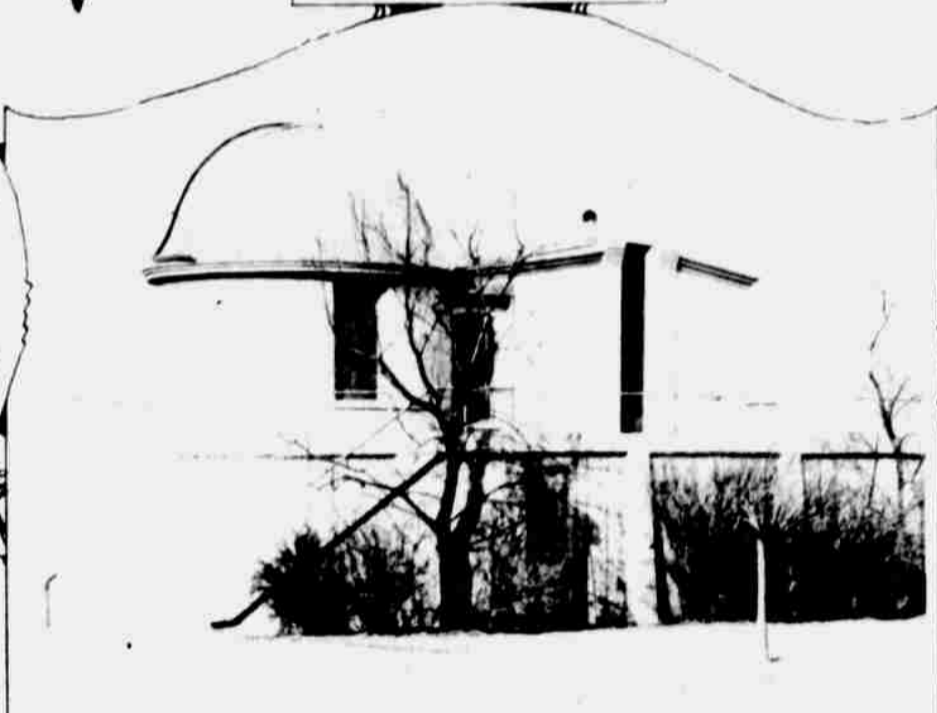
How many Omaha fathers and mothers, we wonder, have been asked to explain the weird figures of this totem pole in Elmwood park? Youthful visitors to the park find in it a never-failing object of curiosity and interest. Dewell photo.



A photographic study in light and shadow and reflection. The scene is the rustic bridge in Hanscom park. Dewell photo.



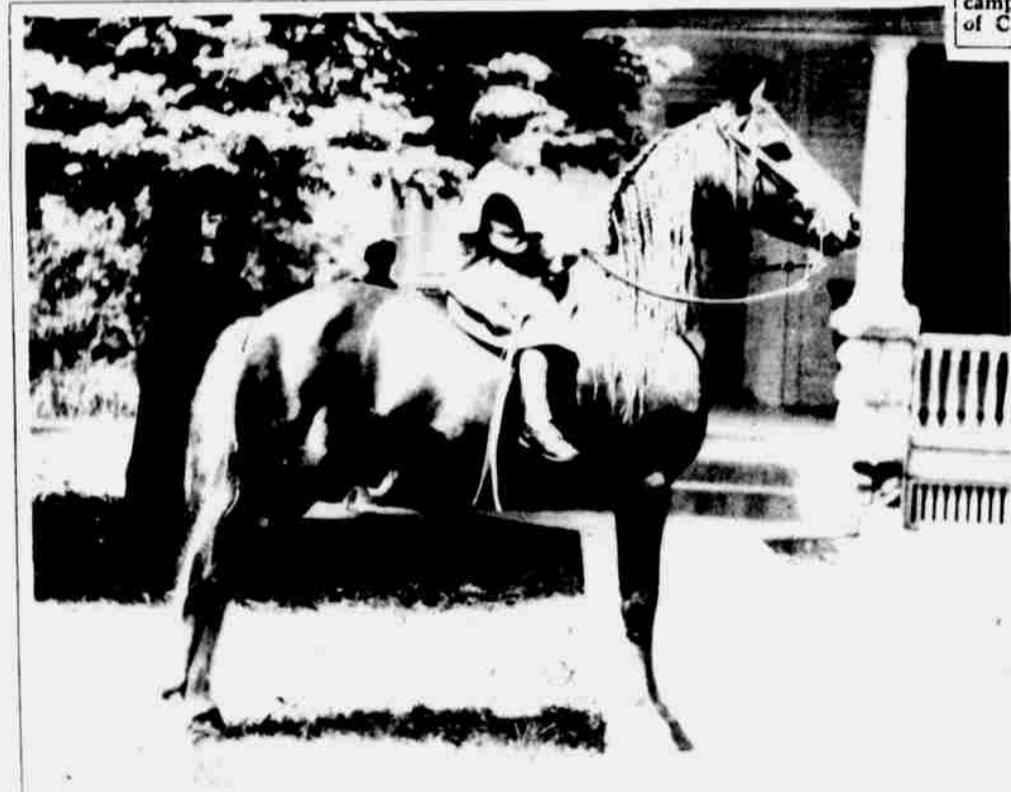
Introducing Mary and her two offspring, yecept Jiggs and Maggie by their friends at Ak-Sar-Ben stables, where they are honored and carefully tended mascots. Dewell photo.



It is here that Omaha is closest to the stars. From this observatory on Creighton campus Father Rigge, widely known as an authority on astronomy, and his flock of Creighton students, commune with planets, constellations, comets and such.



Here's Fire Captain W. T. Bernhardt, with "Cooney." "Cooney" is the muchly petted mascot of firemen at Engine House No. 3, Eleventh and Dorcas streets.



This young rider is Velma Alden, 4, of Grand Island, Neb., mounted on her favorite horse, "Major."



Many a thirsty horse stopped here for liquid refreshment in days of yore. But now the fountain has fallen into disuse and the trough is no longer kept filled. See those horseless conveyances in the background. That's the reason. The fountain is at Capitol avenue and Seventeenth street. Dewell photo.



This mighty cottonwood in Florence park is widely known as "Brigham Young's Tree." The story is that the tree was planted by the Mormon leader during his stay in Omaha preceding the further westward migration of his followers. Dewell photo.



On the summit of the highest hill in Fairmont park, Council Bluffs, reposes this relic of the Transmississippi exposition, the stump of a giant California redwood, brought here in exposition days as part of the Pacific coast exhibit. Dewell photo.



Entrance to the grounds purchased as the site for the new clubhouse of the Omaha Automobile club. The road at the left leads to Bellevue, a mile south. At the right is the road to the old clubhouse.