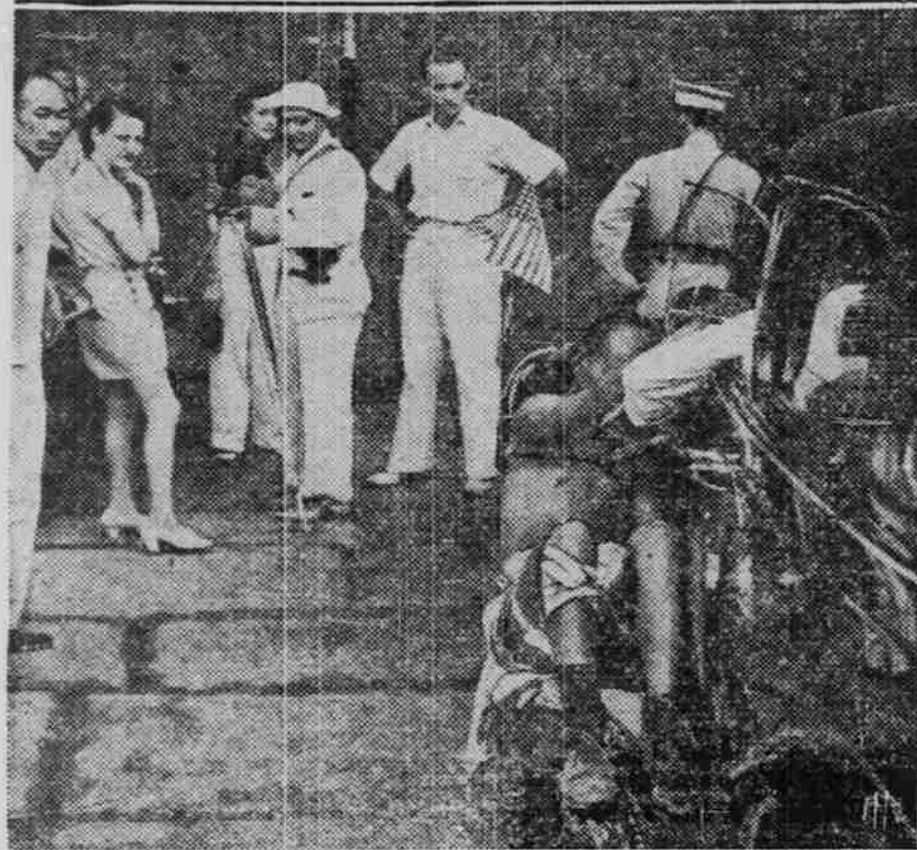


First Pictures of Americans In China's War-Ravaged Zone

Americans Aid in Mercy Work



Note the wounded Chinese soldier strapped to the fender of the car above. He is one of several waiting for admission into Peiping at the Yuan Ting Men Gate to the ancient capital, and was brought there from the war-scarred suburb of Nanyuan by Bonnie Powell, famous American movie cameraman. Powell, standing behind the flag, took pictures of the fighting at Nanyuan, where some of the bitterest warfare was waged in defense of Peiping, and where thousands of Chinese died.

Sanctuary for American Refugees in China



Mrs. Nelson T. Johnson, wife of the United States Ambassador at Peiping, inspects with her children and their Chinese ayah the tents put up in the Embassy compound for numerous American refugees. Behind Mrs. Johnson is Miss Anne Archbold, daughter of John Archbold, former president of Standard Oil. A regular visitor at Peiping, she was trapped in the town when fighting broke out.

Fruits of Japan's War



Gallantly fighting to defend the ancient city of Peiping, these Chinese soldiers were a few of the thousands who gave their lives to stop the advancing tide of Japanese. They were killed in the retreat from the Nanyuan Barracks, south of Peiping.

Flower Garden a Refuge for Yanks in China



Tents have been erected in the flower garden of the American Embassy in the ancient and storied city of Peiping, and scores of American refugees have taken shelter there after the first heavy shelling in the Japanese advance on the capital. Our picture shows American troops putting up the tents, to which the United States Marines escorted Americans trapped in the troubled zone.

Flee Japanese Shells



Mrs. Paul Homan is shown leading the way to the Embassy auto while George Merrill, attache at the American Embassy in Peiping, follows with her suitcase. She was trapped in the north city when Japanese shelled ancient Peiping from earth and air. Many Americans sought refuge in the compound of the Embassy, where tents had been erected for their shelter.

Where Japanese Wildfire Swept Ancient China



One of the focal points of the Japanese advance on the ancient and storied city of Peiping was the village of Nanyuan, to the south. There, thousands of Chinese soldiers gave their lives in a gallant effort to stem the advance. Our picture shows a portion of the town. Scores of slain soldiers had already been buried by the villagers in an effort to avert plague. Note the trench mortar in the street, left where its operators had been killed.

Here Are More Dramatic New Photos From Battle Front In North China



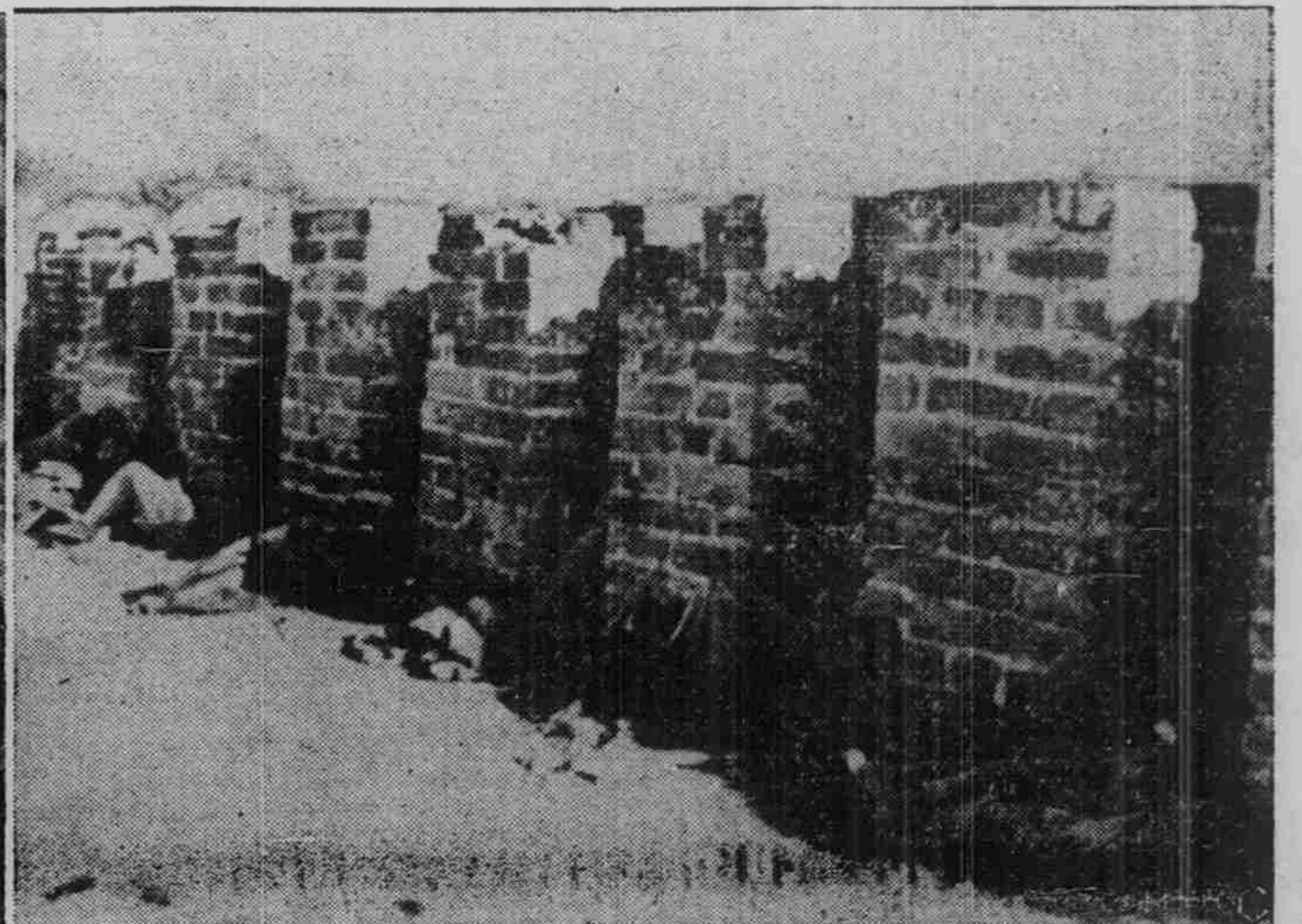
Cathay Hotel after Bombing

These dramatic new photos from North China describe with telling effect the horrors of the conflict between Chinese and Japanese in the vicinity around Shanghai and Peiping. At



China Gathers Her Dead

the left is a photo of the entrance of Shanghai's Cathay hotel after bombs dropped from Japanese raiding planes took a heavy toll of life and property damage. Dead Chinese soldiers,



Exhausted Defenders at Posts

killed while defending the sector around Peiping, are shown, center, being carried from the field of battle in a truck. So intense and prolonged was the fighting that ex-

hausted Chinese troops slept at their posts, right, during a lull in the battle. Casualties continued to mount as Generalissimo Kai-Shek massed more troops against the Japanese.