

# LOCALS

**From Thursday's Daily—**  
George P. Melsing had an operation at the St. Joseph hospital in Omaha this morning. He is reported to be getting along very well.  
Charles Nye of Pender, Nebr., was a week-end guest at the home of Mr. and Mrs. Glen Woodbury. Mr. Nye is district court reporter at Pender.

**From Friday's Daily—**  
D. C. West of Nehawka was in Plattsouth on business today.

Mrs. Harry White entertained the neighborhood club at her home Tuesday afternoon.

Mr. and Mrs. Carroll Sutton are the parents of a boy born Wednesday afternoon.

C. E. Tefft and DeForest Brown of Weeping Water were business visitors in Plattsouth today.

Raymond Eveland and John Gustin of Elmwood were visiting Plattsouth on legal matters today.

Alden A. Barden of near Elmwood, was a visitor in the city today and looking after some matters of business.

Frank Domingo of Weeping Water was a visitor today at the court house looking after some matters of business.

Mrs. Robert Bestor is visiting friends in Lincoln this week. She expects to return to Plattsouth this evening.

Henry Timm's condition is much improved at the Kina hospital in Omaha. He plans to return to Plattsouth this week-end.

Ladies of the Methodist church are meeting at the church parlors this afternoon to make new robes for the choir. The robes are to be of cream

## Twin Romances Too Much for Cupid



Gyneth and Garnet Lowe

Gyneth and Garnet Lowe, 17-year-old tromboning twins of Iola, Kas., found their twin romances too much for Cupid. They had been dating Howarth and Howard Low, 22-year-old twin grocers in their home town. "They're just as identical as we are," the Lowe twins explain, "and it finally got to the point where none of us could tell who was who on dates. We like to be sure we're dating the fellow we think we're dating, you see!"

## Completes Seven Years as Farm Head

Harry Nielsen, Now Starting on a New Year of Service as Cass County Farm.

Harry Nielsen, superintendent of the Cass county farm west of this city, is now entering on his eighth year as head of the farm and the home of the aged.

Mr. Nielsen came here from Howard county and located on the farm as the successor of Jess Elliott and has proven a very successful manager of the farm and in caring for the residents.

When he arrived here there were thirteen residents at the farm home and of these there are six still at the farm, and the total number of residents now numbers twenty-two. The largest number at the home was twenty-six, the past winter.

Mr. Nielsen has been most efficient in the conduct of the farm and during the years when crops were raised on the farm a nice return was secured and the farm able to produce a large part of the living for the residents.

### FREE TRUCK LAW IN S. D.

Pierre, S. D.—Gov. Leslie Jensen cleared his desk of legislative acts by sending to the secretary of state without his signature a truck bill designed to aid South Dakota livestock markets. This measure will permit nonresident truckers to transport livestock to and from South Dakota markets without paying the compensation fee.

Dr. and Mrs. A. E. Johnson are the parents of a boy born yesterday morning at the Methodist hospital in Omaha. Mrs. Johnson's condition has been quite serious. A blood transfusion was given last night and she is better today.

Word has come that Mr. and Mrs. George Nickles of Murray are on their return trip from Hot Springs, Ark. They are visiting at Shreveport and will stop in Kansas City before returning to their home.

### KITE FLYING CONTEST

The kite flying contest to be held at the Recreational Center on Saturday, March 27th, is attracting a great deal of attention and a large number of entries is expected by the day of the contest.

The kites must be made by the boys flying them and the entries will be divided into two classes for the event.

Class A will be composed of boys up to fourteen years of age and any type of kite may be used by the contestants.

Class B will be the entries from fifteen to eighteen years of age and also will be allowed to use any type of kite.

The kites will be judged on the following points:

Construction, 10 points.  
Appearance, 10 points.  
Steadiness of flight, 35 points.  
Height of flight, 35 points.  
Time of getting kits up, 10 points.

The judges of the event will be Dr. O. Sandin, Fred Herbster and Judge A. H. Duxbury.

Prizes will be awarded to the winners, donated by local business houses and individuals and the winners of the contest here will also be pitted against the winner of a similar event at Elmwood.

## An Increased Demand for All Kinds of Seeds

Corn, Alfalfa, and Sweet Clover Among Those Showing Opposite Tendency.

Washington.—Increased demand this spring and early summer for 11 kinds of field seeds, but somewhat smaller sales of five others, was reported in prospect by the bureau of agricultural economics on the basis of reports from 1,700 retail seed dealers.

The seeds for which a larger demand is in prospect this year compared with last, are alsike clover, millet, Sudan grass, lawn grass mixtures, sorgo, cowpeas, soybeans, red-top, timothy, Kentucky blue grass, and orchard grass. Smaller sales are expected of lespedeza, red clover, sweet clover, alfalfa and seed corn.

Brief summaries of prospective sales this spring and early summer follow:

Red clover: A 20 percent decrease in prospective sales this spring is indicated. Many dealers said that other seeds will be substituted for red clover because its price is relatively high.

Alsike clover: Sales this spring are expected to show the largest percentage increase over the 1936 sales of the 16 kinds of seed. A 15 percent increase in prospective sales is indicated. Many dealers reported alsike clover will be substituted in red clover.

Sweet clover: A 10 percent decrease in sales is in prospect, according to 1,089 dealers who sold 5,213,100 pounds last year.

Lespedeza: Prospective sales show the largest decline from 1936 sales of any of the 16 kinds of seed. The decrease is indicated to be 35 percent. Principal reasons, scarcity and high price.

Alfalfa: A 5 percent decrease in sales is indicated.

Timothy: Although many dealers say that timothy will be substituted for other seeds, 1,154 dealers indicated slightly greater prospective sales than last spring.

Redtop: Sales this spring are expected to be slightly larger than in 1936.

Kentucky bluegrass: Prospective sales are indicated as slightly greater than those in spring and early summer of 1936.

Orchard grass: Sales this spring by the 294 dealers reporting, are expected to be about the same as 1936 sales.

Lawn grass mixtures: A 5 percent increase is indicated.

Millet: Prospective sales are reported as nearly 15 percent larger than in 1936.

Sorgo: A 5 percent increase in sorgo "came" sales is indicated.

Sudan grass: Sales are expected to be 10 percent larger than those of last year.

Cowpeas: A 5 percent increase in sales for planting is indicated.

Soybeans: Sales for planting this year are expected to be about 5 percent larger than those of last year.

Seed corn: Prospective sales of 934 dealers, who sold nearly 175,000 bushels of seed corn last year, are slightly less than 5 percent below their 1936 sales. In recent years sales of seed corn usually have been underestimated; this also may be true this year because increased sales are in prospect in 15 states and decreased sales in nine states from which reports were received. The importance of saving seed corn as stressed last fall is the principal reason given for a slightly greater number of dealers expecting decreases.

### CARS, GUNS TAKEN AT YORK

York, Neb.—York police warned Nebraska law enforcement officers that robbers stole a new automobile, four guns and a quantity of ammunition in breakins here early Thursday.

A gunmetal sedan was taken from the Nielsen Chevrolet garage. The guns and ammunition, stolen from the Jones Hardware company, included two .32 caliber, one .38 caliber and one .22-20.

Officers who sought fingerprints said the robberies apparently occurred soon after midnight. They could not determine how many were in the gang.

Journal Want Ads cost little and accomplish much.

### Two Ways

There are just 2 Ways to Buy a Suit

ONE is to fit yourself into the suit!

THE OTHER — Have the suit made to order to fit you!

Our Tailored to Order Suits, \$24.75 up

**WESCOTT'S**  
Personalized Tailoring

Plattsouth is the ideal large town shopping center for all Cass county people. Values here are the equal of those found anywhere — read the ads for bargain news.

**M. G. Churchill**  
Paper Hanger  
Painter and Carpenter  
READY TO SERVE YOU  
Murray, Nebr.

## Flowering Bulbs are Most Colorful Plants for Spring

But There Are Still Many Long-Lived 'Green' Plants and Vines Which Find Place in Home.

With the advent of the flowering bulbs, color is added to the house plants available in the late winter. This adds a cheerful note to the indoor garden but the added brilliance should in no way detract from those old favorite and faithful green plants which have brightened our homes during the winter season, and which are so long lived.

The hyacinths, daffodils, tulips and amaryllises are probably the most colorful of the new plants, but there are other flowering beauties which should not be overlooked. The azalea is a veritable sheet of delicate color, the pinks bordering on white and spotted with tinted reds are probably most beautiful.

The cyclamen, which we remember from the Christmas season, is in much better condition at this time as the season is more propitious for it. This is also true of the primulas, whose fine garden-like flowers are so bright and cheerful.

This is a good time of year to start or complete a collection of small cactus plants. Because they will stand almost any amount of hot, dry atmosphere, and have such a long life, whether we care for them or not, they are becoming more popular. For the small container they are probably the most satisfactory house plant.

Very much on the order of the cacti are the sedums. They too come in a variety of shapes, and are not dissimilar in appearance, except that they do not possess the needle-like spines. Their upright growth is slow, and if one or more small plants are set in a watertight container, they can be placed almost anywhere in the home without fear of moisture stains, and without needing to look after them more than once every few days—and this only to add moisture.

The value of the sturdy vines should not be overlooked as spring advances, for they will always form a permanent part of your indoor plantings. Those favorites the philodendron, ivy and wandering Jew are always useful. Of the upright plants, the sansevieria, Chinese evergreen, African violet or saintpaulias should not be forgotten.

## LAND, FARM and RANCH BARGAINS

### FOR SALE

Clover hay and silage for sale. L. B. Todd, Murray. m18-31w

### FOR SALE

P. and O. tractor lister. David Rutherford. Tele. 3011. 11w

### FOR SALE

White seed corn. Reuel Sack, Myrard, Nebr. m11-tf

### FOR SALE

Top buggy, almost new; Shetland pony; 1936 yellow seed corn. S. T. Gilmour, Plattsouth. m18-tf

### FOR SALE

Thirty-three pound northern Iowa seed oats, 75c per bushel sacked. Cash on delivery. Plattsouth Feed Yards. m5-tfd&w

### FOR SALE

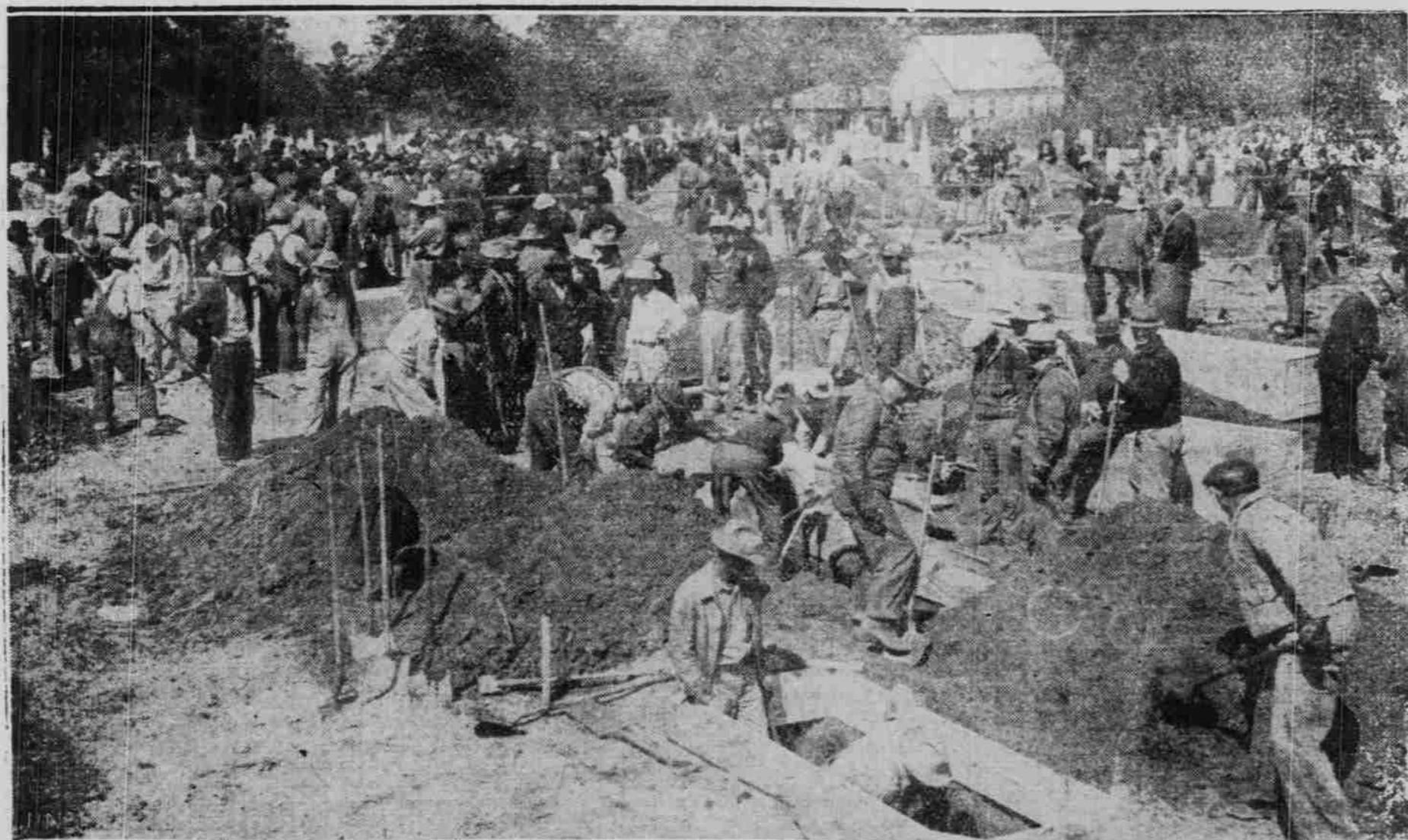
Good seed is the major step in establishing a crop. Few customers can tell good seed from bad, they buy on faith. Buy B.E.B. Bartling's Best Brand Seeds and justify that faith. Sweet clover \$10.00; Alfalfa, \$10.00 to \$18.00; Timothy \$4.00 to \$4.25; Pasture Mixture 18c lb.; Seed Corn \$2.80 a bu; Orchard Grass 25c a lb.; Blue Grass, 4 lbs. \$1.10. Business established 66 years. Edward Bartling Seed Co., Nebraska City, Nebr. m15-31w

## Carry Casket of School Victim to Cemetery



In this picture pallbearers are shown carrying coffin with remains of child victim of the New London school disaster, into Pleasant Hill cemetery, Texas, for burial. Hundreds of funerals similar to this were held Saturday and Sunday throughout Rusk county, as children were transported to this large centralized school by bus from distances as far as 30 miles away.

## Dig New Graves for Texas School Victims



General view of workers digging graves in the Pleasant Hill cemetery, Texas, for the burial of victims of the New London school disaster that took the lives of more than 400 children and a score or more of teachers.