

PLAN TO LEAVE CITY

Tuesday evening the members of the board of health visited the building on South Sixth street, occupied by the band of Romanians that have

Top Cash Prices

For Top Prices on All Your PRODUCE

Poultry, Eggs, Cream Horse-Cow Hides

Home Dairy

Conveniently Located at Corner of 5th and Main, Plattsmouth

been quartered here for the past ten days.

The board found that the conditions there were not the best and after a conference of the officials and the leaders of the tribe, it was agreed that the gypsies would leave the city Friday morning and to remain away from this city in the future.

RECOVERING FROM INJURY

The friends of Mrs. H. G. McClusky are pleased to see her about again after being kept at home over six weeks with a severely sprained ankle. Walking is still rather difficult for her due to the injury.

RELATIVE IN DANGER

Mrs. F. S. White has received no word from her cousin, Mrs. Conner, who works in an office in Louisville, Ky. Mrs. White spent her girlhood in New Albany so has many acquaintances in danger in the flood area.

NAMED PRESIDENT OF STATE FAIR BOARD

Cass county friends of Hon. W. B. Banning, of Union, long time state senator and at present secretary of agriculture at Lincoln, will join with the Journal in the feeling of pleasure prevalent among his acquaintances all over the state upon his election as president of the Nebraska State Fair Board. Mr. Banning has long been a member of the board and a tireless worker for the success of the Nebraska state fair—both in the pre-depression years when record-breaking attendances were rolled up, and in the later years when crowds dwindled and revenue was insufficient to meet the bills.



Discord and criticism did not deter Mr. Banning and his associates on the board from continuing to work for the success of the affair and it is pleasing to note that the last couple of years have seen the tide turn and success again crown the efforts of this group of men. We feel sure the Nebraska state fair will go on to further success this coming year under the able leadership of "Bill" Banning and other members of the board who were named at the election of officers last week.

RELATIVES IN FLOOD AREA

Mr. and Mrs. Val Burkel have had a great deal of anxiety concerning Mr. Burkel's two sisters and two brothers who live in Portsmouth, Ohio. They were unable to reach them by wire. However yesterday, word arrived that they had to leave their home but are now dry and safe although the city is under water.

Get your new 1937 World Almanac at the Bates Book Store.

CHILD HAS HAND FROSTED

Mrs. Hubert Dew, of Omaha, has been visiting in the city with her seven-months-old daughter, Yvonne. The little daughter suffered the frosting of her hands Friday night while sleeping. The child seems to be in no great pain except when the hands are touched.

OMAHA PARTIES WEDDED

Tuesday afternoon at the court house occurred the marriage of Miss Leona Fitzgerald and Mr. George Henry Burney, both of Omaha. The parties were married by Judge A. H. Duxbury.



Poultry Wanted Fri. & Sat.

- Hens, 5 lbs. up, lb. .14c
- Hens, under 5 lbs., .12c
- Leghorn Hens, lb. .10c
- All Springs, Stags. 10c
- Leg. Springs, Cocks. 8c
- Horse Hides, ea. \$4.00
- Full Head and Tail
- Cow Hides, lb.7c

Eggs and Cream

Will pay you full market value, but impossible to quote price on these commodities at this time.

We Appreciate Your Business
A. R. CASE & CO.
West of Ford Garage

KING OF THE TREE

Tomatoes No. 2 Can **3 for 25c**

GOOD BRAND Spinach No. 2 1/2, 2 for 25c **25c**
No. 2 Cans, 3 for

CAMPBELL'S Tomato Soup 2 for 15c **29c**
4 Cans

EUREKA FANCY CUT BEANS Wax or Green No. 2 Tins. Each **12 1/2c**

TASTE WELL Red Beans No. 2 Tin Each **9c**

Catsup 14 oz. Bottle . **10c**

KRISPY SODA Crackers 2 lb. Caddy **29c**

Sunshine KRISPY CRACKERS
Big 1-LB. PACKAGE **17c**

Shurfine COFFEE
Our Sales are Increasing
More and more people are buying this fine coffee—rich and winy. You, too, will like this coffee.
Per Lb. **27c**

This is our new Hobart Coffee Refiner. With it we are able to pulverize or to grind it fine, medium or coarse to your individual requirements.

- Combination Special Kellogg's CORN FLAKES 2 Pkgs. with 1 Pkg. Pep and Cereal Bowl **25c**
- GRAPEFRUIT JUICE Won Up. Med. size tins, 3 for **25c**
- BAKER'S COCOA 1/2-lb. Tin, 9c; 1-lb. Tin **14c**
- HALLOW'EE DATES 2 lbs. for **19c**

- Fancy Whole Segments Shurfine GRAPEFRUIT No. 2 Tins, 2 for **23c**
- DOMESTIC SARDINES Cottonseed Oil, 1/4 size tins, 6 for **25c**
- IMPORTED SARDINES Olive Oil, 1/4 size tins, each **10c**
- M. J. B. COFFEE 1-lb. tin, **31c**; 2 lbs. **59c**

IVORY SOAP Here is a Good Deal—2 Large Ivory and 2 Medium Ivory—all for . . . **25c**

Libby Mixed Fruit Compote Per lb. 16c	Yellowstone Preserves Imitation, 2-lb. jar 23c	Standard Pack Sweet Corn No. 2 Cans, 3 for 33c
Gooch's Best FLOUR 24 lb., \$1.98; 48 lb. \$1.79	Edwards Tenderized Marshmallows Cello wrapped, Lb. 14c	Hunt's Fancy Fruit Cocktail No. 1 tin, 24c; No. 2 1/2 24c
Champion (Assorted) Preserves Imitation, 4-lb. jar 45c	Hunt's Superior Red Alaska Salmon 1-lb. Tall Can 21c	Omaha Family Laundry Soap 10 Bars 29c
Omar Flour 24 lb., \$1.05; 48 lb. \$1.98	Casco Butter Solids, 1-lb. carton 36c	PRUNES 3 lbs. for 25c

Meat Department

Featuring Armour's Star and Cudahy's Puritan Corn Fed Beef
Swiss Steak 29c
Any Thickness.

- Corn fed Shoulder Beef Roast, lb. . **18c**
- Beef Roast** Lean Shoulder lb. . **15c**
- Fresh Pork Brains, lb. **11c**
- Fresh Pork Liver, lb. **12 1/2c**
- Fresh Pork Hocks, lb. **12 1/2c**
- Delicious Boiled with Kraut or Beans
- Sauer Kraut, 2 lbs. for **15c**

LARD Home Rendered 2 lb. . . **29c**

- Fresh Oysters, pint. **24c**
- Milk fed Mock Chicken Legs, each. **5c**

Fresh Pork Roast lb. 18c

- SALT HERRING**
- Milkers, keg. **95c** Mixed, keg. . **83c**
 - Cudahy Puritan Beef Liver, lb. . . **19c**

Pork Chops Center Cuts — Any Thickness! Fine Baked or Breaded. . . **24c**

Fruits Vegetables

- New Potatoes 25c
4 lbs. for
- Head Lettuce 10c
Solid Iceberg, Each
- Rutabagas 10c
3 lbs. for
- Bananas 7c
Firm, ripe, Lb.
- New Cabbage 4c
Texas, Per lb.
- Cauliflower 9c
Per lb.
- Juice Oranges 35c
Large, Texas, Doz.
- Calif. Navels 39c
Per dozen
- Celery 10c
Large bunch
- Broccoli 15c
Per bunch
- Carrots 5c
Per bunch

Sandwich Spread 25c
Quart jar

Macaroni or Spaghetti 35c
5 lb. Box

Sturgeon Bay Red Pit'd Cherries No. 2 tin, 15c; 2 for **29c**
Fine for Sauce or Pies.

We Deliver **Black & White** Phone 42

The Money is Ready

to BUILD . . . BUY . . . or IMPROVE your home. If assistance is needed, inquire of us for—

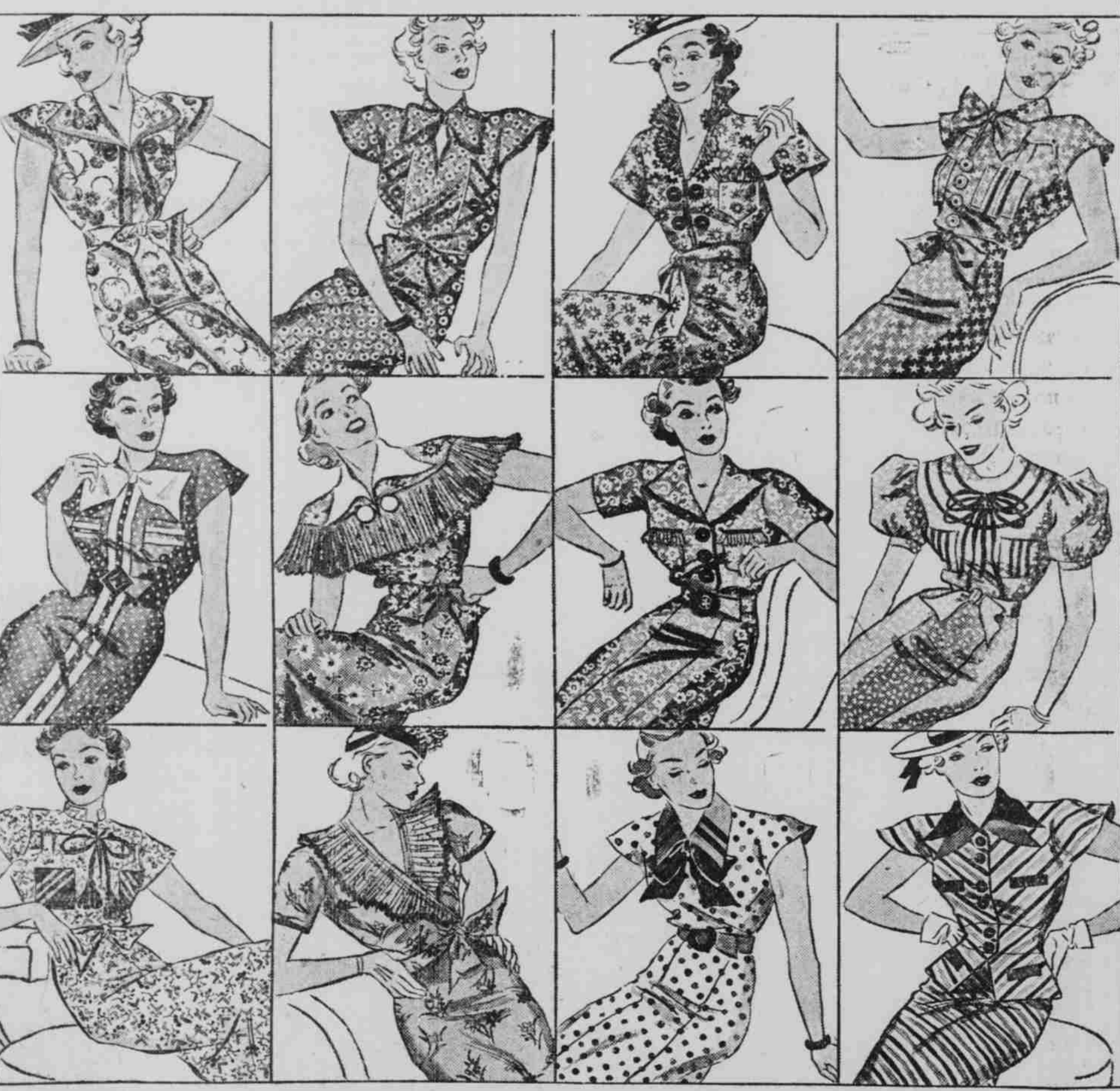
A Federal Direct Reduction Loan

on easy monthly payments for term of 5 to 15 years, as preferred, with full prepayment privilege.

Prompt Service, No Commissions
Small Expense . . . thru

Neb. City Federal Savings & Loan Ass'n
FIFTY YEARS CONTINUOUS SERVICE

OUR ONE GREAT SALE OF THE YEAR
ADVANCE SPRING SHOWING "SUNNY SUE" FROCKS \$1.15
EVERY DRESS MADE OF NEEDLEIZED QUADRIGA



The Largest Store in Cass County **SOENNICHSEN'S** PLATTSMOUTH, NEBRASKA