

# Big Opening DANCE

SATURDAY, JULY 4  
Open Air Platform located one-half mile west of Amick School.

Shortly Herold Orchestra  
Pat Campbell and Ed Kohrell, Callers  
Everybody Welcome

Plattsmouth offers opportunities unexcelled anywhere to small factories. Natural gas, low cost electricity, nominal living wages.

# CLOSED JULY 4th

Open Friday Night JULY 3RD

Following Prices Good for Tuesday, Wednesday

- Heavy Hens, lb. . . . 15¢ (All Weights)
- Leghorn Hens, lb. . . 12¢
- Heavy Springs, lb. . . 19¢
- Leghorn Springs . . . 16¢
- Roosters, lb. . . . . 8¢

TOP PRICE FOR CREAM

# Plattsmouth Creamery

## STRIKES EBB IN FRANCE

Paris.—The leftist government worked diligently to get the last of the Paris strikers back to work while France smiled at odd labor quirks on the Cote d'Azur. Only a few hundred remained out following a settlement between employers and workers at the capital's last occupied department store.

The "federal arms" movement receded in the provinces, with the Marseilles sailors' return to work heading the list of the government's successful arbitrations.

Cannes, however, reported a crew of painters quit work in the church of St. Cezaire, deciding to eat their meals in the pews and sleep in the confessionals. Three hundred striking Riviera gigolos threatened to occupy casino dance floors.

The senate voted confidence in the foreign policy of Premier Leon Blum's cabinet—even before the premier had asked for it. The bank of France, for the second time in a week, cut the rediscount rate, this time from 5 to 4 percent. The cuts were ordered to loosen credit facilities and get more money into circulation thru productive enterprises. However, the bank for the week statement ending June 19 showed a 610 million franc (\$40,463,740) gold drain for the 13th consecutive week of such losses.

## FARMERS TO AID LEMKE

Kankakee, Ill.—The National Farmers' union will support the union party and the candidacies of Representative William Lemke of North Dakota for president and Thomas Clark O'Brien of Boston for vice president, union officials said. Lemke will visit national headquarters here to confer with farmers' union officials.

The Illinois branch of the organization, known as the United Farmers of Illinois, pledged its support of the union party. A resolution adopted by the state organization charged that past records of both republican and democratic parties "have failed to put into operation such measures as would adequately protect the rights of 120,000,000 citizens.

A small sized advertisement run steadily will produce greater results than now and then use of larger space.

## Early Trial is Sought in Navy 'Spy Plot; Case

Prosecution Pushed Again Discharged Navy Yeoman Linked with Japanese Plot.

Los Angeles.—Government prosecutors of a navy "spy plot" moved swiftly toward immediate trial for a discharged navy yeoman accused of selling U. S. naval secrets to an agent of Japan. "We are ready to proceed to trial immediately," said Clyde Thomas, deputy United States district attorney. "We expect the trial to be under way in a week."

Arraignment of Harry Thomas Thompson, indicted former yeoman, first class in the U. S. Navy, has been set for Monday. Federal agents have not located his co-defendant, Lieut. Commander Toshio Miyazaki of the Imperial Japanese navy.

They were indicted by a federal grand jury on charges of 19 overt acts to violate the espionage laws. Thompson now is serving a county jail sentence for illegally wearing the uniform of a navy officer.

The activities of Thompson and Miyazaki were defined in the indictment as extending over nine months, between July, 1934, and March, 1935. During that period Thompson, who previously had been discharged from the navy, boarded key vessels and various flagships of the United States fleet here and at San Diego. It is charged he sold to the Japanese navy officer confidential documents stolen from the U. S. Fleet.

The indictment said he boarded the destroyer Brooks in San Diego, unlawfully wearing a navy uniform, and abstracted some papers. The Brooks is a relief flagship of destroyer squadron 3 of the scouting force.

## PRICE OF BRAN GOES UP

Omaha.—A heavy demand for bran to be transformed into poison mash to fight the grasshopper menace was credited as a dominant factor in the \$6 per ton price rise in mill feeds since the first of the month. Buying prices of pure and standard bran reached \$23 and \$23.50, respectively, an increase of \$1 over Wednesday. Omaha and Kansas city flour mills reported their supplies low as a result of the increased demand.

## REDUCES STREET FORCE

Omaha.—John Kresl, city street commissioner, Thursday dismissed 54 employees of the street department and placed those retained on half time, effective July 1. The move, Kresl explained, was an economy measure. His budget depleted, he said, by heavy expenses last winter for removal of snow and ice from the streets and action to lessen the payroll and other expenses was necessary.

## Poultry Wanted

Wednesday, Thursday  
Springs, 3 lbs. up, lb.

# 20c

Hens, 4 1/2 lbs. up, lb. . . 15c

## Open Friday Night

to receive your Poultry and other Farm Produce, but prefer not to buy Produce Saturday, July 4th.

A. R. CASE & CO.  
Located just West of Ford Garage

## COMMUNISTS OPEN PARLEY

New York.—Chairman William Z. Foster, opening the ninth national convention of the communist party, called for the development of "a mighty people's front against reaction, fascism, and war—a farmer-labor party." "The old order has the seal of death upon its forehead," said Foster, thrice the party's presidential nominee.

"Seeing the people rebelling, it frantically seek to cancel the democratic rights and civil liberties of the people, prepares civil war against them, organizes Black Legions, Ku Klux Klans, and self-styled Liberty leagues.

"It takes refuge in an irresponsible oligarchy—the supreme court—which it hopes is out of the reach of the people. It prepares to throw the whole world into a new and more terrible war which threatens to blot out civilization.

"The program of the communist party offers the only way out, the only possible solution of the crisis into which the whole world is plunged. . . ."

He cited the "glorious victories of the people's front in France" as "proof of the correctness of the communist program."

## MILLION IN GOLD SEIZED

New York.—Federal agents seized \$1,250,000 in gold double eagles at the Standard Safe Deposit company. The coin, acquired by a Swiss corporation owned in Germany before the date of President Roosevelt's order requiring the surrender of gold coin, had been the subject of extensive litigation.

The Uberssee Finanz Korporation Aktien Gesellschaft had acquired the gold thru Ladenburg Thalmann & Co., private bankers. The corporation lost appeals for a temporary injunction to prevent the bankers from turning it over to the government.

Journal advertisers have some splendid values for Cass county shoppers. Read their messages of economy.

## Pot Plants for the Indoor Window Box

They Furnish the Right Spot of Color or an Accent to Finish Off a Room.

A fine way to cheer up a drab living or dining room is to add an indoor window box of pot plants. You have no doubt admired grandmothers' sunny window of geraniums and ferns, with perhaps a tall rubber plant or two, and although it might not be exactly to your taste, you must remember that grandma harks back to the 80's for her ideas.

Modern women have modernized smaller windows and the new trends in furniture and decoration. Window boxes and ornamental pot plants have come to be a godsend to many a perplexed lady who is searching for the indoor window box to fit in with right spot of color or an accent to finish off a room.

Often times the sofa or fireplace do not furnish the focal point in a living room, no matter how we try to organize our furnishings. This is because of the windows. They are always large, and with the sunlight streaming in, they cannot help but detract from other objects. Curtains and draperies tend to soften this cry for attention somewhat, but in the case of a brilliant exposure, or where there are many windows, the problem is almost impossible.

In such cases we can do well to emphasize the windows, instead of subduing them, and the best way to do this is by growing a window box of flowers. They will find a natural situation in the sunny spot, and add much color and fragrance, besides interesting to watch grow and bloom.

Window boxes can be grown for brilliant blossoms or for colorful foliage. The vinea vine is an excellent vine type of indoor plant for this time of year. It has a fine foliage that drapes over the side and provides a setting for other plants. Cyperus, or umbrella plant, is another noted for its foliage, which much resembles a petal cluster, but is more sturdy and lasting than the blossom. Blooming plants, such as ageratum, geranium, azalea and others can be grown. They produce much more color but are not so lasting, and usually must be replaced at intervals with fresh plants.

The advantage of having a window box is that plants which are grown for a time in pots in various parts of the house, can always be transplanted into your tiny garden, or returned to a new situation.

Phone news items to No. 6.

# Black & White

## Wednesday Specials

- Oxydol, large size pkg., 25¢
- Old English Furniture Polish Generous Size Bottle } Both for . . . . 26¢
- Santos Coffee, per lb. . . . . 17¢
- Ovaltine, large size . . . . . 57¢
- Hershey Cocoa, large size . . . . 12¢
- Soda Crackers, 2-lb. caddy . . . . 19¢
- IGA Lye, 3 cans . . . . . 21¢
- Ginger Ale, Lime Rickey, 2 for . . . 25¢
- The Large Full Quart Bottles
- Ice Tea Blend, quart jar . . . . . 15¢
- Corn, No. 2 tin, 2 for . . . . . 15¢
- Tomatoes, No. 2 tin, 3 for . . . . . 25¢
- Peas, Wisc. pack, No. 2 cans, 3 for . 25¢
- Soap Bargain, large size, 6 bars . . 24¢
- Crystal White, O-K, IGA or TNT Brands
- Mushrooms, 8-oz. pieces and stems . 32¢
- Bottle Caps, per lb. . . . . 16¢
- Matches, 6-box carton . . . . . 19¢
- Oakite, dish mop free with 2 for . . 23¢
- Tomato Juice, 50-oz. tin . . . . . 28¢
- Syrup, 1/2 gallon Dark . . . . . 28¢
- Kirk's Hard Water Castile, 4 bars . . 15¢
- Our Mother's Cocoa, 2-lb. tube . . . 15¢

## QUALITY MEATS

- Fresh cut Pork Liver, lb. . . . . 10¢
- Armour's Frankfurters, 2 lbs. . . . 25¢
- Assorted Veal Loaf, per lb. . . . . 22¢
- Rib Boil, per lb. . . . . 10¢
- Shoulder Beef Steak, lb. . . . . 17 1/2¢

Store Closed from 12:30 to 5:30 Saturday, July 4th

Subscribe for the Journal

# Store Hours

Saturday, July 4th

Business Houses affiliated with Plattsmouth Ad Club will be closed from 12:30 p. m. to 5:30 p. m. on Saturday, July 4th. Open Saturday evening till regular closing time, also all forenoon.

- Quaker Puffed Wheat Tasty Cereal 2 Pkgs. for . . . 15¢
- Killian's Solid Pack TOMATOES No. 2 Can - - 2 for 15¢
- Del Monte or Sutter Pak Sliced or Half PEACHES No. 2 1/2 Can - - 15¢

# HINKY DINKY

Platts, Tues., Wed., June 30, July 1

- Del Monte Ortho Cut COFFEE 2-lb. Can, 45¢; 1-lb. 23¢
- SUNRISE COFFEE 3 lbs., 49¢; 1-lb. bag . . 17¢

- Lighthouse Cleanser Per Can . . . . . 3¢

- SUPERIOR Dill or Sour Pickles Quart Jar . . . . . 13¢

- Casco BUTTER Carton . . . . . 32¢

- BOILING BEEF, choice, lean rib, 3 lbs. . . . . 25¢
- HAMBURGER, freshly ground, lb. . . . . 10¢
- FLANK STEAKS, fancy selected, lb. . . . . 23¢
- CUBE STEAKS, choice, tender, lb. . . . . 23¢
- BEEF STEAK, U. S. Choice Shoulder, lb. . . . 15¢
- PORK CHOPS, choice lean, lb. . . . . 22¢
- PORK LIVER, young, tender, lb. . . . . 10¢
- BEEF BRAINS, fancy, select, set . . . . . 5¢
- MINCED HAM, Armour's Quality, lb. . . . . 10¢
- LUNCH MEAT, fancy assorted, lb. . . . . 20¢
- KIPPERED SALMON, ready to serve, lb. . . . . 29¢
- FILLETS OF FISH, selected quality, 2 lbs. . . . 25¢

- Post Toasties 2 Large Pkgs. . . . . 21¢

- Otoe Chief Flour 48-lb. Sack . . . . . \$1.29

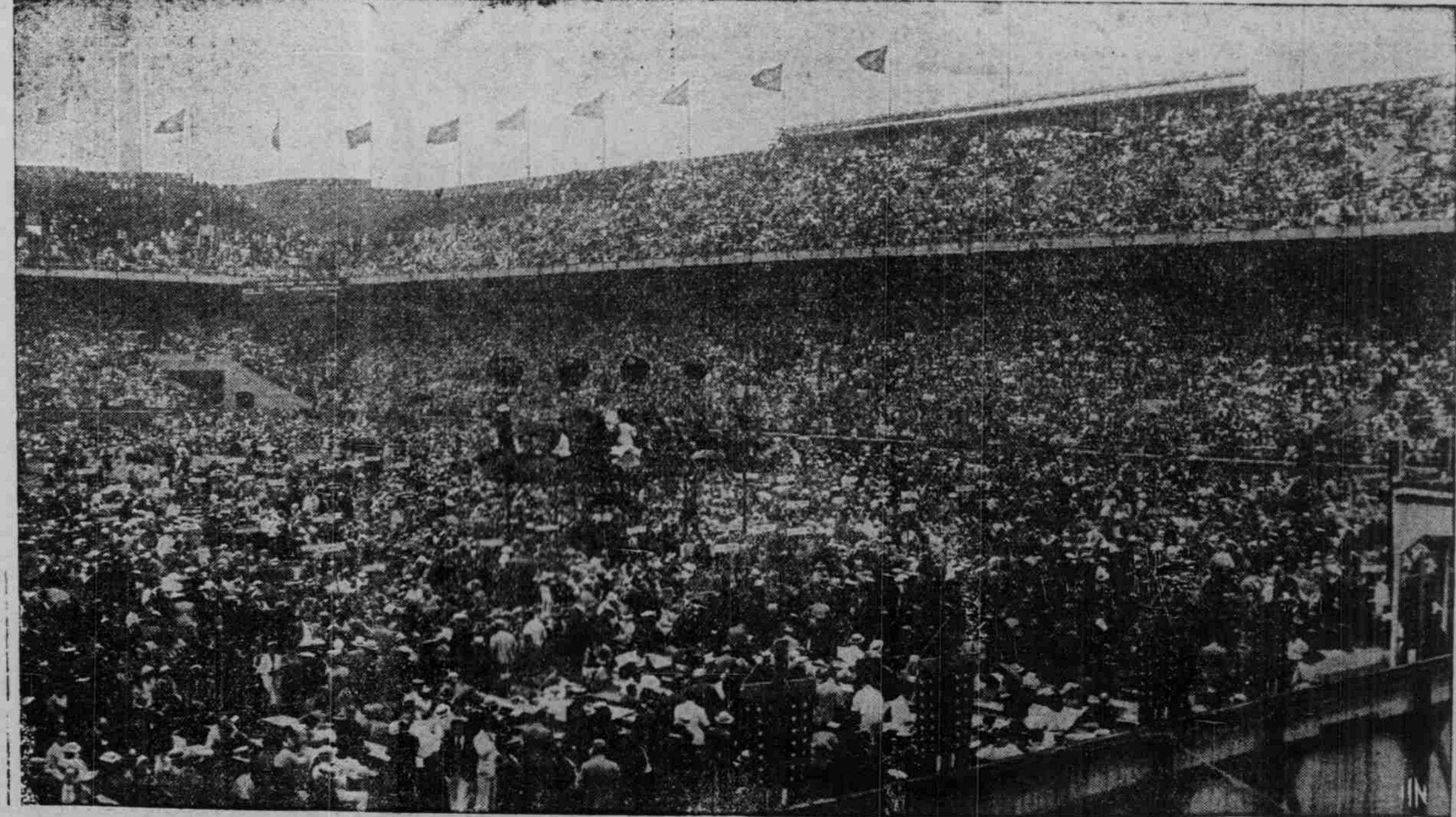
- Sunlight Margarine 1-lb. Carton . . . . . 14¢

- HONEY DEW MELONS, extra large Jumbos, each . 20¢
- Delicious, Sweet, Vine-Ripened California.
- TOMATOES, firm, red ripe Texas, 2-lb. basket . . 15¢
- U. S. Grade No. 1.
- LETTUCE, large, fresh crisp Calif. Iceberg, head . . 6¢
- 5-Dozen Size Heads.
- PLUMS, fancy, fresh. Qt. basket, 15¢; 16-lb. lug . 98¢
- California Red Santa Rosa.
- NEW POTATOES, Red or White, 10 lbs. . . . . 45¢
- ORANGES, Calif. Sunkist Valencias, doz. . . . . 19¢
- Sweet, July, 344 Size.
- LEMONS, large Calif., full of juice. Doz. . . . . 35¢
- CANTELOUPE, fancy ripe pink meat variety, 3 for 25¢

# Blue Ribbon Malt

America's Standard of Quality, Light or Dark Hop Flavored. Full 3-lb. can. . . . . 57¢

## President Rings Down Curtain on Democratic Convention



A mass of humanity filled Franklin Field, Philadelphia, to hear President Roosevelt ring down the curtain on the national democratic convention in a dramatic speech that was broadcast over both the Columbia and National coast-to-coast chains. Roosevelt was introduced by Senator Robinson, of Arkansas, permanent chairman of the convention. Vice President Garner preceded him in accepting.