

NEWPORT TIES, 65 cents; Newport Buttons, 75 cents; Child Kid Newport, Nov. 7 to 11, 65 cents; Infants But shoes, 50 cents; Ladies Side Lace, 75 cents; Ladies Fine Turned shoes, only \$3.75; Mens Buckle shoes, \$1.00.

WHAT MOTHEE WILL LET HER CHILD GO UNPROTECTED, WHEN SHE CAN GET NEWPORT TIES FOR 65 CENTS.

PLATTSMOUTH, NEB., MAY 8th, 1884.

PETER MERRIS.

\$12,000

Because I have too many Goods, and they MUST GO.

WORTH OF BOOTS AND SHOES!

At Greatly reduced Prices, FOR CASH!

Opera House Billiard Hall.



J. S. HARTMAN, Proprietor.
Everything New.
Four New Tables.
Oysters & Lunch in connection
 Also a complete line of the best quality of CIGARS, and TOBACCO, next door to P. O. Opera House Block.



BURLINGTON ROUTE

EASTWARD
 Daily Express Trains for Omaha, Chicago, Kansas City, St. Louis, and all points East. Through Cars via Peoria to Indianapolis. Elegant Pullman Palace Cars and day coaches on all through trains, and Dining cars east of Missouri river.

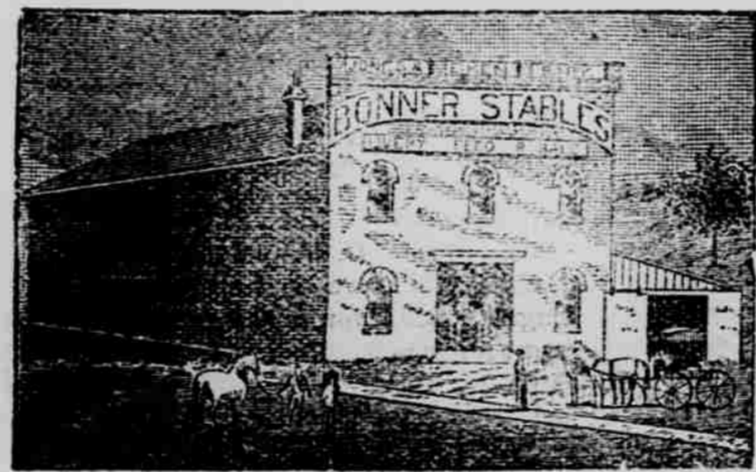
WESTWARD
 Daily Express trains for Denver connecting in Union Depot for all points in Colorado, Utah, California and the entire West. The advent of this line gives the traveler a New Route to the West, with scenery and advantages unequalled elsewhere.

Lafe O'Neil's CENTRAL MEAT MARKET

Is the place, where at all times you can find the best Beef, Pork Mutton and Fresh Fish.

All kinds of game in season.

W. D. JONES,



COMPLETE Livery, and Sale Stable.
 RIGS OF EVERY DESCRIPTION DAY OR NIGHT.

EVERYTHING IS FIRST-CLASS—THE BEST TEAMS IN THE CITY—SINGLE AND DOUBLE CARRIAGES.

Travelers will find complete outfits by calling at the

Bonner Stable,

Corner Vine and Fourth Streets, PLATTSMOUTH, NEB.

JONATHAN HATT J. W. MARTHS.

Beef. Pork. Mutton and Veal

JONATHAN HATT & CO.,
 Successors to A. G. HATT.
 HEADQUARTERS FOR CHOICE Sugar-Cured Hams, Bacon, Salt Meats, of all kinds, Lard Bologna, and all other articles kept in a first-class meat market.
 AT WHOLESALE AND RETAIL.

The Highest Market Price Paid for Hides, Wool, Pelts, Grease, Etc.

Fresh Lake Trout and White Fish Every Thursday Morning

FRANK H. WILSON,

Fire, Tornado and Cyclone Insurance,
 Office, Basement of Bank of Cass County,
 PLATTSMOUTH, NEBRASKA.

Queen Insurance Company, of Liverpool.
 Washington Fire and Marine Insurance Co., of Boston.
 Commercial Union Assurance Company, of London.
 Western Assurance Company, of Toronto, Ont.

Capital, \$ 4,500 000
 Total Assets, 20,100 000
 Total losses paid since organization, 52,047 096

Reliable Insurance—Careful Underwriting and prompt attention guaranteed.

Western Assurance Co.,

—OF—
Toronto, Ont.

A. M. SMITH, J. J. KENNY, A. W. DODD,
 President, Managing Dir., Supt. Agencies.

UNITED STATES TRUSTEES.
 Wm. H. Gulon, of Williams & Gulon, (Gulon Steamship Line), New York.
 Wm. A. Booth, President Third National Bank, New York.
 Arthur B. Graves, President St. Nicholas Bank, New York.

Geo. W. Hayes, General Agent, Milwaukee, Wis.

ISAAC SWEETSER, President.
 A. W. DAMON, Secretary.
 FRANK E. SWEETSER, Vice-President.

WASHINGTON

Fire and Marine Insurance Company
 —OF—
BOSTON.

UNITED STATES BRANCH.

ASSETS.

United States 4 1/2 per cent registered Bonds	\$345,000.00
United States 4 per cent registered Bonds	218,240.00
New York Central & Hudson River Railroad Bonds	27,000.00
Georgia State Bonds	42,200.00
Cash deposited in State of Mississippi	15,000.00
Cash in Bank	140,870.86
Premiums in course of collection	102,200.76
LIABILITIES.	\$ 934,517.62
Re-Insurance reserve	\$456,806.21
Unpaid losses	88,148.23
Other liabilities	389,563.18
Surplus in United States	\$ 69,000.73
Premium Receipts in United States, 1874 to 1882, inclusive	\$5,205,262.39
Total Fire losses, paid in United States, 1874 to 1882, inclusive	3,265,535.69

STATEMENT, JAN. 1, 1884.

ASSETS:

Bank Stock	\$ 91,640.87
City of Boston Bonds	125,000.00
United States	170,875.00
Boston Stocks and Bonds	364,250.00
Boston Gas Light & Steam	5,500.00
London Marine Insurance	84,900.00
London Marine Insurance	32,240.00
Marine Premium Notes	35,800.00
Premiums in course of collection	143,690.24
Cash on hand	143,690.24
Other Assets (accrued Int. &c)	1,714.00
GROSS ASSETS	\$1,500,000.34

LIABILITIES.

Losses reported & unpaid	\$112,400.00
Reserve for Re-Insurance	200,000.00
All other liabilities	215,000.00
GROSS LIABILITIES, except Capital	\$507,400.00
Surplus as regards Policy-holders	\$1,292,600.34
Paid-up Capital	1,000,000.00
Net Surplus	\$292,600.34

WESTERN DEPARTMENT,
 174 La SALLE STREET, CHICAGO
 FRED. S. JAMES, General Agent.

QUEEN Insurance Co

—OF—
LIVERPOOL.

emi-annual statement of the United States branch on the 31st day of December, 1882.

JOSEPH M. ROGERS, Manager Western Department, Chicago, Ill.

Assets in the United States.

Cash Items	\$ 128,983.66
Real Estate, Unimproved	302,796.15
United States Bonds	1,016,253.11
Other Securities	169,129.26
Other Items	24,641.55
	1,752,207.89

Liabilities in the United States.

Losses Unadjusted and in Suspense	\$128,034.20
All other Claims against the Company	4,076.75
	143,010.95
Amount necessary to reimburse all outstanding risks	770,072.42
Net surplus in United States	\$53,124.52
	\$1,752,207.89

Net Surplus in United States Dec. 31 1882.....\$833,124.52
 Losses paid since Organization.....8,596,598.09

COMMERCIAL UNION ASSURANCE CO.,

—OF—
LONDON.

UNITED STATES BRANCH:
 37 and 39 Wall Street, NEW YORK CITY
 ALFRED FRYL, Resident Manager,
 CHAS. SEWARD, Assistant Manager.

WESTERN DEPARTMENT:
 157 and 159 LaSalle St., CHICAGO, ILL.
 C. F. MULLISS, Resident Secretary.

UNITED STATES BRANCH STATEMENT JAN. 1st 1883.

Reserve for total liabilities, including re-Insurance in United States	\$1,357,124.24
Net surplus Jan. 1st, 1883	99,761.80
Assets held in the United States	\$2,327,436.04
Income, 1883	\$1,607,504.55
Expenditures, 1883	1,501,120.48
Surplus Income in U. S., 1883	106,384.07
Total losses paid by this Company since organization	\$57,718,024.60

All losses in the Western Department paid promptly through the Branch Office, 157 & 159 LaSalle St., Chicago.

THE ELKHORN SALOON!

HEADQUARTERS FOR
WINE, BEER AND CIGARS,
 Old Kentucky Whiskies,
 IMPORTED WINES,
 MUMM'S EXTRA DRY CHAMPAGNE,
 NATIVE WINES,
 ST. LOUIS BEER

Krug's Omaha Beer

Always on draught.

A FINE LINE of CIGARS
 ALWAYS IN STOCK, AT

THE ELKHORN

Fitzgerald Block PLATTSMOUTH, NEB.

J. F. BAUMEISTER,

Commission Merchant,
 HEADQUARTERS FOR
FEED, FLOUR
 —AND—
PROVISIONS,
 Highest Cash price paid for
BUTTER AND EGGS.

An unexcelled line of FLOUR always in stock, corner 6th and Main Streets, opposite First National Bank.

PLATTSMOUTH, NEBRASKA.