

NASH "6"

Five Passenger Car



Beautiful, Comfortable and Powerful

THE power of the NASH SIX is one of its many good qualities. It has abundant power for every motoring purpose. The Nash perfected Valve-in-Head motor has its greatest power at average driving speeds.

Whether Crawling along "in high" or traveling at top speed, its power is always sufficient to satisfy any reasonable demand.

Where the traffic is congested and the pace must be slow, the Nash Six will still creep along smoothly "in high".

But when the way ahead is clear, a touch of the accelerator will give you quick "pick-up" such as you want in the car you like to drive.

Or out on the country roads when the going is heavy, the power of this car will get it through places where you would scarcely believe a motor car could take you.

It is a real pleasure to drive this car for it is so easy to handle.

You like the "life" it has because of the power and responsiveness of its deep-breathing motor. You like its "feel" of power and the confidence it gives you in the car.

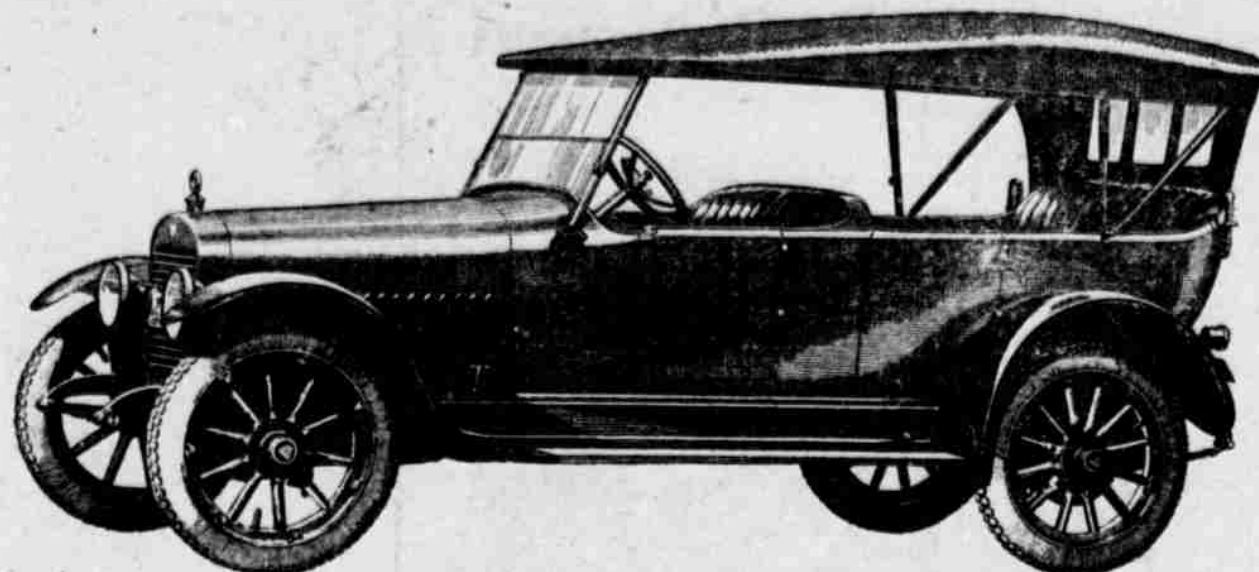
Ask our demonstrator to let you get in behind the steering wheel and put the car through its paces yourself. Its unusual power is sure to more than satisfy.



Three prime qualities you look for in a motor car are beauty, comfort and power. These three qualities are well combined in the Nash Six Five-passenger car. You will like its beauty of line from radiator to tail light.

Its double-cowled, airline body, a deep Nash blue, penciled with gold, is swung low upon a clean, strong chassis of 121-inch wheelbase.

HUDSON SUPER-SIX



Hudson Super-Six Quality Will "See You Through"

ALL purchases today should be based on KNOWN QUALITY. It is real economy to buy a motor car that will see you through—a car of proven performance and one that will stand the test of hard service.

As the reconstruction progresses motor cars of quality will be more costly to buy. Production of new cars is limited the demand for cars that will endure is constantly increasing.

An owner of a Hudson, with the prestige of Super-Six quality, realizes its increasing value to himself.

Hudson motor cars, both new and used, are in greatest demand—a demand created by quality alone.

More than fifty thousand users are demonstrating this today.

You know—if you have watched Hudson records—that for three years Hudson engineers have been the severest judges the Super Six has had.

They put it through every test known to motordom—and some that were not—hill climbs, speedways, record-breaking transcontinental trips.

And what experience taught them went into not radical changes, but refinements of detail that make the Hudson a really finer Super-Six—a car that will see you through.

If you were situated as we are, could feel the pressure of demand, could note the deliveries due to curtailed production, and could realize the disappointment that come to thousands, you would place your order as far as possible in advance of your actual needs for your Super-Six.

Hudson body designers have been given full power in their efforts to match Super-Six power and endurance with body quality. The result is a full line of beautiful models—ten in all—among which you can find just the type that fits your needs. In appointments, every detail however minor or inconspicuous, has been the subject of the most careful selection. Nothing cheap or inferior has been allowed a place in the Hudson Super-Six.



We Specialize on Aluminum Crank Case Welding, but we takes as much pride in ALL our work. Acetylenene Welding Service of the best sort.

The Overton Garage

ALLIANCE, NEBRASKA