

S OF WESTERN NEBRASKA

Power, Water and Sewerage

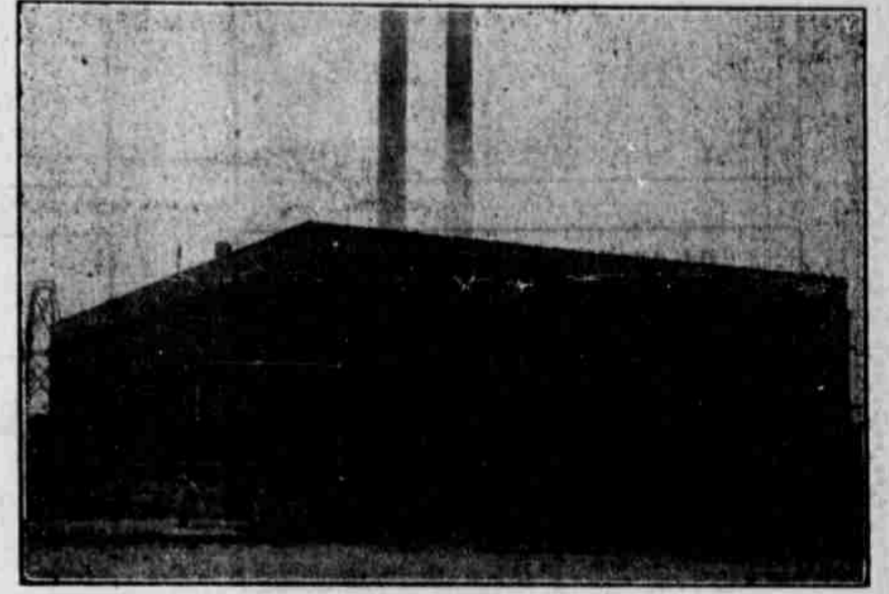
Municipal Ownership and Management



and Auto Fire Truck

Alliance a Good Place to Live

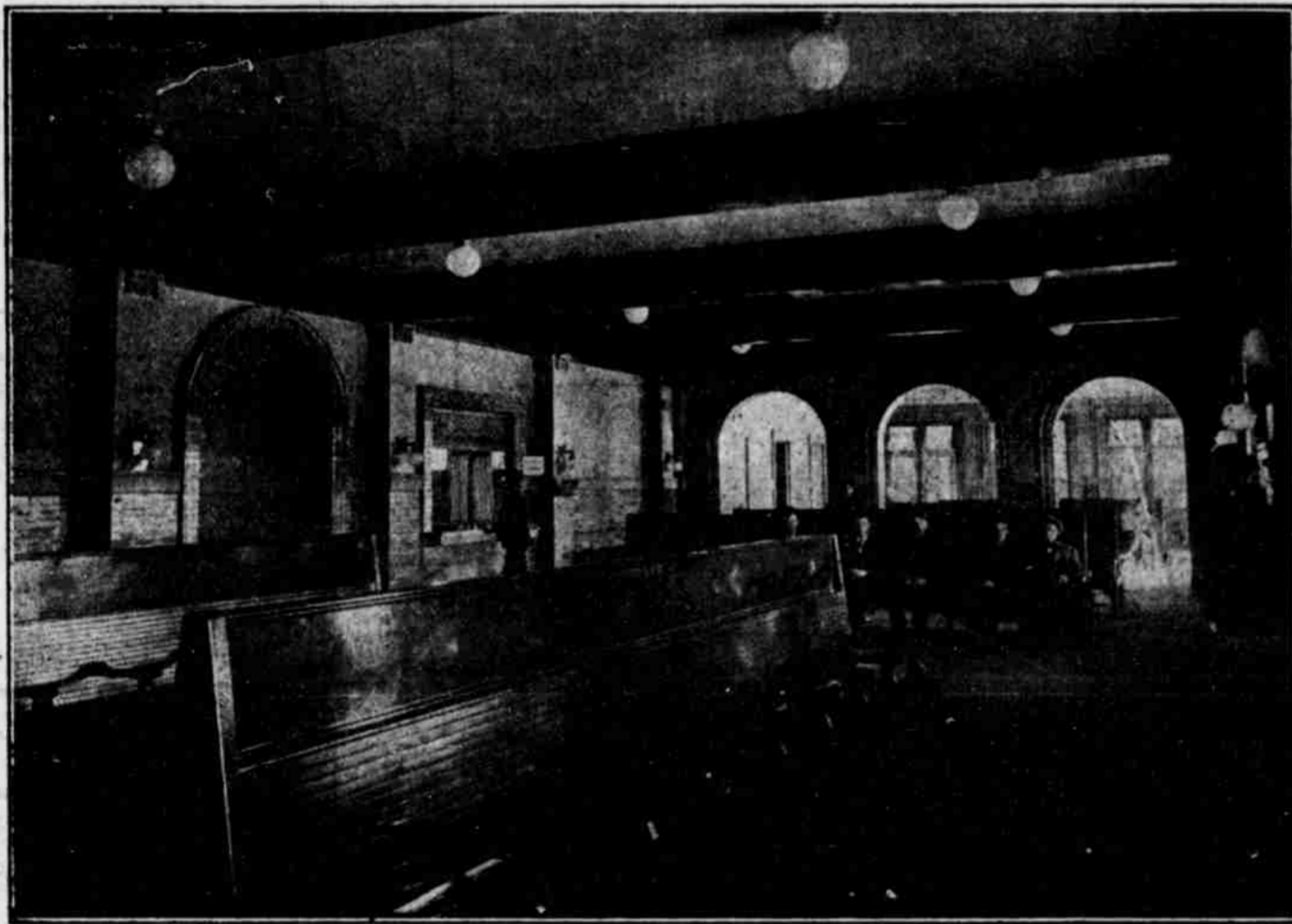
For a place to make as your permanent home, no better little city than Alliance could be found. It is the county seat of Box Butte county and is the metropolis of the western part of the state. The Box Butte county court house, constructed and furnished at a cost of \$90,000, is the finest in the state. Alliance, according to a census taken on June 25, 1915, had a population of 5,109. The climate is ideal, combining the benefits of an altitude of nearly 4,000 feet with a dry atmosphere which is conducive to good health. The summer days are warm and the nights cool. The winter weather is delightful and not marred by long, cold, damp cloudy spells. The sun shines nearly every day in the year. Although the thermometer drops low in the winter, the cold is not that damp, uncomfortable kind, but of a crisp, invigorating nature. To the east of the city lies the sand hills—the rich cattle raising country. To the north is Pine Ridge. To the south and west the famous irrigated North Platte Valley. Alliance offers all the benefits of a thriving, modern city to the homeseeker.



City Electric Light and Power Plant and Pumping Station

ARE WELCOME

Always glad to have at the office of the city light, power and water department a picture of the city hall, a picture of shown on this page. Let you figure out your electric problems and show you how they will benefit you in your business. Every home in Alliance should use electric light. Every business that uses power of should use electric power.



Interior of Burlington Depot, Alliance, the Finest Depot in Nebraska Outside of Omaha

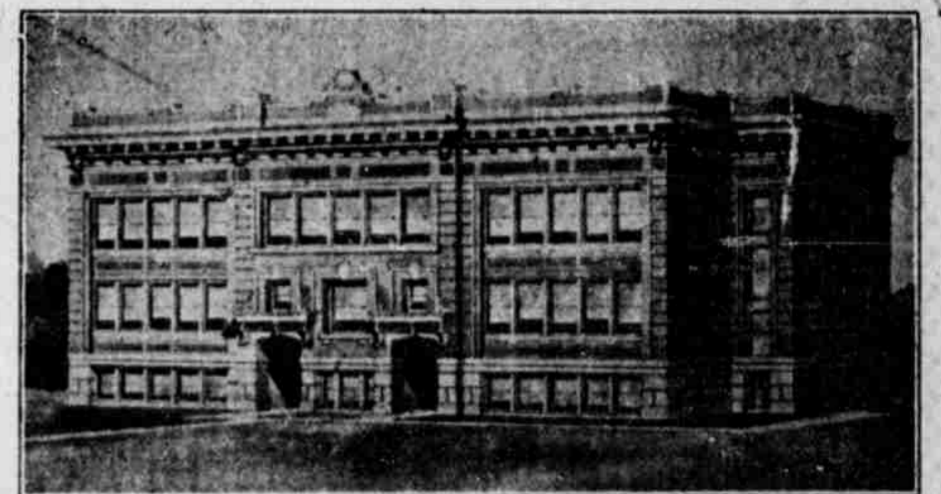
Water and Sewerage

The city water system was installed by the city administration in 1894. At the present time there are approximately ten and one-half miles of water mains covering practically all parts of the city. The rates for water are as cheap as any city in the state where deep wells are the source of supply. The water is pumped from a depth of one hundred and sixty feet by four electric pumps. While the water department is not a big paying proposition it is self-supporting and under the same management as the light plant. There are at the present time six hundred and eighty water customers. Alliance city water is noted for its purity. There is plenty of water pressure for fires. Storage is provided by a stand-pipe in a high part of the city. If necessary direct pressure is given from the pumping plant.

The city sewerage system was installed in the year 1910. Approximately eleven miles of mains and laterals were laid, covering practically all the city. The sewage is carried to the septic tank of Alliance, where after going through a process the water is pumped from the septic tank by two forty-horse-power pumps out upon city farm and used for irrigation purposes. There are four hundred and seventy-five connections to the sanitary sewer. The sewer is flushed at regular intervals by flush tanks placed over the city. The sewerage system has been of great value to the city and as fast as new houses and buildings are erected they are connected up with the system. The management of the light and water departments handle the sewerage department. The system was built to care for the growth of the city during coming years, and is extended as fast needed.

Plenty of Good Schools

No other city in the state is better equipped with good schools. The school equipment and teaching force are always up-to-date. Graduates of the Alliance high school are entered without examination to any college or university in the United States that accepts entrance credits, by virtue of the accreditation of the high school by the University of Nebraska and its membership in the North Central Association of Colleges and Secondary Schools. The city has three public school buildings, all built of brick and modern in every respect. It also has a Catholic academy which is attended not only by pupils from Alliance but from over this section of the west. An average of thirty teachers are employed in the public schools, most of whom hold professional (life) state certificates. The course of study in the grade schools is up-to-date and includes work in manual training and domestic art. Courses in the high school are offered in Latin, German, Normal Training, Agriculture (which includes manual training for boys and domestic science for girls) and Business.



Central School.—Three Public School Buildings and an Academy in Alliance



an Alliance Home which make use of our improvements are happy homes.

WATER DEPARTMENT

Snyder, F. J. Was, Jerry Rowan, Wm. Davidson,
 King, Jr., E. T. Kibble, Geo. E. Davis, A. J. Welch,

Councilmen.