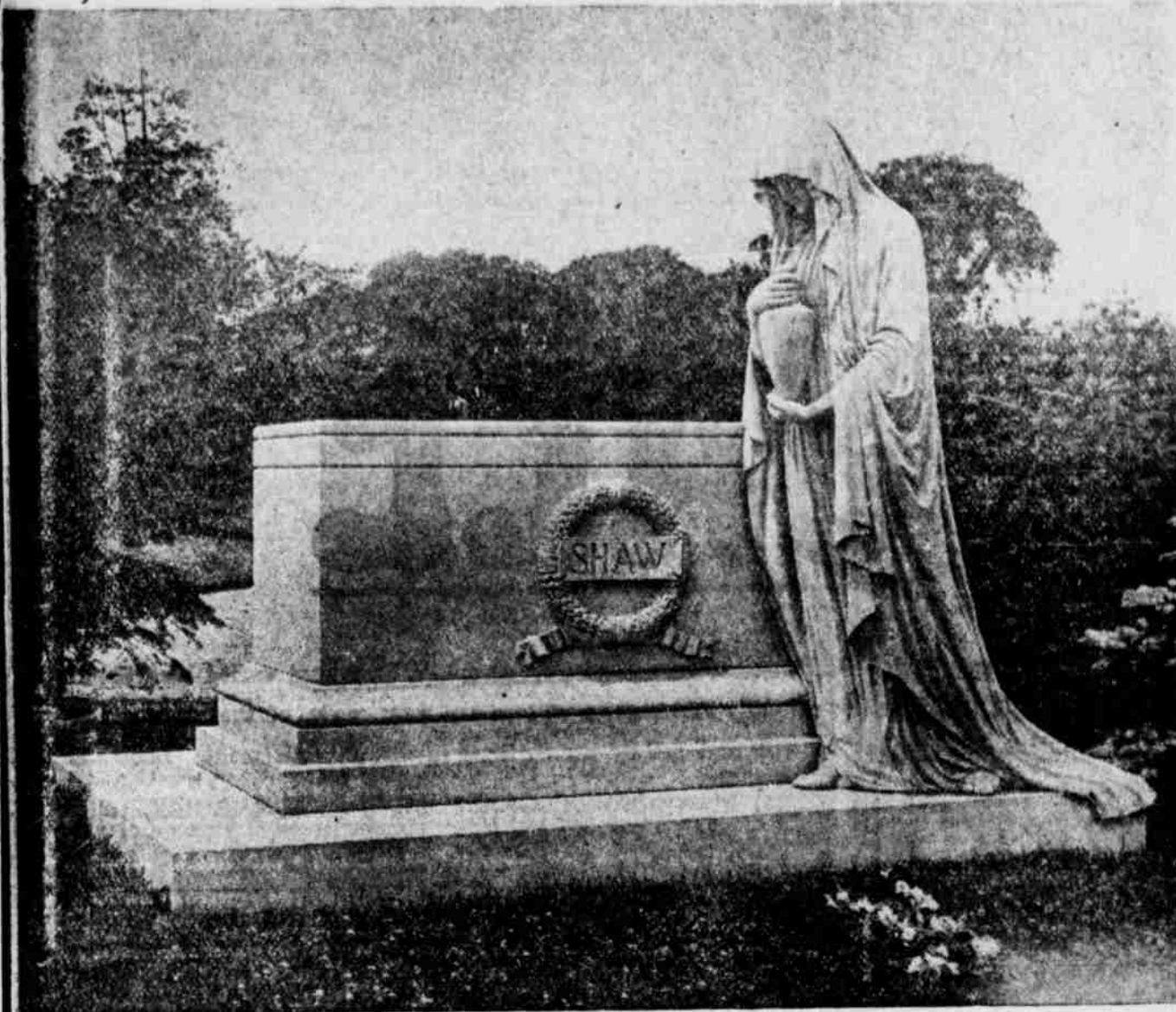


MEMORIALS



No tribute is so appropriate as a monument carved from enduring granite. It stands unaltered, unchanged, preserving a memory through the long years.

Readers of this paper have a special invitation to call at our display room, 1700 O Street, when in Lincoln, and examine our stock of monuments, which is the largest and finest in the west, including everything from the simplest tablet to the most classical sarcophagus.

We employ no agents, thus saving our customers their profits.

BEAUTIFUL ILLUSTRATED BOOKLET FREE. SEND FOR IT

KIMBALL BROTHERS

LINCOLN, : : : : NEBRASKA

Sound

Established 1874

Safe

Rosenbaum Bros. & Co.

(Incorporated)

Live Stock Commission Merchants

Cattle, Sheep and Hogs

We cordially solicit your patronage. With our unexcelled facilities in every department, we are prepared to render you most efficient service.

Correspondence Invited

Send for Market Reports

Chicago

South Omaha

Sioux City

Prompt

Established 1874

Reliable

185,000 ACRES OPEN TO ENTRY

Large Tract of Government Land in Yellowstone County, Mont., Restored to Entry by President

The President today upon the recommendation of Secretary Lane restored to a modified form of homestead entry about 185,000 acres of land in Yellowstone county, Montana, within the Billings land district, and formerly a part of the Crow Indian Reservation south of Hysham and Sanders, Montana, stations on the Northern Pacific Railway, and Northeast of Hardin, Montana, a station on the Chicago, Burlington & Quincy Railway.

There are scattering tracts throughout the area restored, but the main body of the lands is situated to the east of Tullock Creek and to the east and west of Sarpy Creek, in T. 5 N., R. 35 E., Ts. 1 to 5 N., inclusive, R. 36 E., Ts. 1 to 4 N., inclusive, R. 37 E., and parts of Ts. 1 to 4 N., inclusive, R. 38 E.

Short creeks flowing into Tullock and Sarpy creeks afford some water for these lands and it is believed that wells may be obtained at a reasonable depth. The lands are good grazing lands and large portions may be successfully farmed. Dry farming is being successfully carried on in that vicinity.

Applications to make entry may be executed after October 26, 1914, before any qualified officer in the Billings land district. An application may embrace 320 acres in the north or south half of a section, and where the remaining land in a section is not entered prior to May 15, 1915, an entry may be enlarged to include all the land in the section, or 640 acres. The price of the lands prior to September 15, 1915, will be \$3.00 per acre, \$1.00 per acre required at the time of entry and the remainder in two equal payments, three and four years thereafter. Residence upon and cultivation of the land entered for three years are required.

This Proclamation carries out the administration idea of disposing of the remaining public lands to actual settlers or home builders.

DOING THEIR DUTY

Scores of Alliance Readers Learning the Duty of the Kidneys

To filter the blood is the kidneys' duty.

When they fail to do this the kidneys are weak.

Backache and other kidney ills may follow.

Help the kidneys do their work. Use Doan's Kidney Pills—the tested kidney remedy.

Proof of their worth in the following.

R. W. Gaylord, N. Moorehead St., Chadron, Nebr., says: "I suffered severely from troubles caused by weak kidneys. I finally began using Doan's Kidney Pills and one box fixed me up all right. I recommend Doan's Kidney Pills to anyone suffering from backache or other symptoms of kidney complaint."

Price 50c, at all dealers. Don't simply ask for a kidney remedy—get Doan's Kidney Pills—the same that Mr. Gaylord had. Foster-Milburn Co., Props., Buffalo, N. Y. oct-1-2t-4032

OPENED FOR SETTLEMENT

Secretary of the Interior Opens for Entry Under Enlarged Homestead Act California Land

Secretary Lane has recently made an order opening to settlement and entry under the enlarged homestead act about three-quarters of a million acres of land in California lying in San Bernardino, Kern, Modoc and Lassen counties. Further information may be obtained from the local land offices at Redding, San Francisco, Visalia, Los Angeles and Susanville.

The secretary has also recently made orders opening to settlement and entry on November 10, 1914, under this act, about two and one-half million acres of land in New Mexico, principally in San Miguel, Union, Chaves, Luna, and Guadalupe counties, about 100,000 acres of land in Colorado, the greater portion being in Routt and Rio Blanco counties, and 250,000 acres in Washington, the greater portion of which lies in Yakima, Kittitas, and Grant counties, north and east of North Yakima, and small portions of which are in Okanogan, Ferry, and Douglas counties. Further information may be obtained from the local land offices of the districts in which the lands are located.

The enlarged homestead act which provides for the designation of these lands and under which they will become subject to settlement and entry allows settlers to obtain 320 acres each.

Apply Sloan's Freely for Lumbago

Your attacks of Lumbago are not nearly so hopeless as they seem. You can relieve them almost instantly by a simple application of Sloan's Liniment on the back and loins. Lumbago is a form of rheumatism, and yields perfectly to Sloan's, which penetrates quickly all in through the sore, tender muscles, limbers up the back and makes it feel fine. Get a bottle of Sloan's Liniment for 25 cents of any druggist and have it in the house—against colds, sore and swollen joints, rheumatism, neuralgia, sciatica and like ailments. Your money back if not satisfied, but it does give almost instant relief. 43-5t-4029

PROFESSIONAL DIRECTORY

RATES: One-inch cards, 50 cents; two-inch cards, \$1.00

H. A. COPSEY

Physician and Surgeon
Office Phone 360. Res. Phone 340
Calls answered promptly day and night from office. Offices: Alliance National Bank building over the Post Office.

C. E. SLAGLE, M. D.

PHYSICIAN AND SURGEON
Office phone 65 Res. phone 8
Alliance, Nebraska.

Dr. J. D. Emerick
F. J. Petersen
Res. Phone 20 Res. Phone 43

Dr. Coppernoll & Petersen
Osteopaths
Rooms 7, 8 and 9, Rumer Block
PHONE 43

Geo. G. Gadsby

LICENSED EMBALMER
PHONE: Day 498
Night 510
ALLIANCE : : NEBRASKA

Dr. L. W. Curtis

Prepared to treat all domestic animals

Phone 633

Alliance, - - - Nebr.

Dr. J. M. Willis

Physician and Surgeon

Over Mallery's Grocery

Phones: Office 496
Res. 578

Alliance, Nebr.

FIRE! FIRE!

ATTENTION, FIREMEN!

Whenever your city is in the market for Fire Hose or Equipment, you should at once write us, as it will be to your advantage.

Also bear in mind that we sell Hand Extinguishers for automobiles, private houses, lumber yards and schools.

ANDERSEN COMPANY
1115 Farnam St.,
OMAHA, NEBR.

Do You Raise Vegetables?

"A kitchen garden is half a living," they say, and even if you do not raise vegetables for the market you are interested in the remarkable successes made by gardeners and truck farmers by applying new scientific processes to their work.

There is an immense profit in the profitable cultivation of vegetables, whether you eat them or sell them. Canning factories and city markets are demanding more and more vegetables to feed the large percentage of population in big cities who have no room to raise even a hill of potatoes.

Whether you farm or whether you have only a tiny garden on your back lot we advise you to try a new plan next year, and follow the suggestions made in "The Vegetable Grower," the new monthly devoted especially to the culture of garden truck.

The regular price of this magazine is fifty cents a year, but we will send it to you, with two other magazines and our own paper all for only \$1.75 a year—the biggest bargain in reading matter ever offered.

Your Fall Colds Need Attention

No use to fuss and try to wear it out. It will wear you out instead. Take Dr. King's New Discovery, relief follows quickly. It checks your cold and soothes your cough away. Pleasant, Antiseptic and Healing. Children like it. Get a 50c bottle of Dr. King's New Discovery and keep it in the house. "Our family Cough and Cold Doctor," writes Lewis Chamberlain, Manchester, Ohio. Money back if not satisfied, but it nearly always helps. 43-5t-4029

GETTING BETTER AFTER SICKNESS

Nothing has ever equaled or compared with the medicinal fats in **Scott's Emulsion** to arrest the decline, invigorate the blood, strengthen the nervous system, aid the appetite and restore the courage of better health. **Scott's Emulsion** is pure health-building food, without alcohol or opiate. TRY IT

PUBLIC STENOGRAPHER

At The Herald Office
REASONABLE RATES
PROMPT SERVICE

A. J. KENNEDY

Dentist
Office in Alliance National Bank Building over Post Office
PHONE 391

J. D. EMERICK

Bonded Abstractor.
I have the only set of abstract books in Box Butte county. Office Room 7, Opera House Block. 10t570

BRUCE WILCOX

Lawyer and Land Attorney
Practitioner in civil courts since 1898 and Register U. S. land office from 1903 to 1907. Information by mail a specialty.
Office in Land Office Building
ALLIANCE : : NEBRASKA

EUGENE BURTON

Attorney at Law
Land Attorney
Office First National Bank Building
PHONE 180
ALLIANCE : : NEBRASKA

DRESS CUTTING SCHOOL

For any information either call or write the Alliance Dress Cutting School.
Alliance, Nebr.

F. M. BROOME

Ex-Receiver United States Land Office

U. S. LAND ATTORNEY

Townsite and Realty Agent
Office Norton Block
Alliance, - - - Nebraska

J. W. Burns

CONTRACTOR and BUILDER
PLANS AND ESTIMATES FURNISHED ON APPLICATION

I employ only first-class mechanics All work guaranteed.

PHONE 279

Residence and Shop, 7th and Mississippi.
Alliance, Nebraska.

Sign Painting and Graining All work first class

B. V. REEVES

Painting, Paperhanging and Decorating

Phone Black 282 Alliance, Nebr.

Phone 233.

Clare A. Dow

ELECTRICIAN

House wiring. Motor and auto-starter repairing

Alliance, Nebraska

"LET ME CRY FOR YOU"

HARRY P. COURSEY

LIVE STOCK AND GENERAL AUCTIONEER

Farm Sales a Specialty
TERMS REASONABLE

PHONE 664

ALLIANCE : : NEBRASKA

H. M. BULLOCK,

ATTORNEY AT LAW

ALLIANCE : : NEBRASKA

L. W. BOWMAN

Physician and Surgeon
Office in First National Bank Bldg.
Phones: Office, 362; residence, 18. 50t1608

DR. D. E. TYLER

Dentist

PHONE 167
OVER FIRST NATIONAL BANK

ALLIANCE : : NEBRASKA