

ALLIANCE HERALD

Published every Thursday by
The Herald Publishing Company.
Incorporated

JOHN W. THOMAS, Editor and Mgr.

Entered at the postoffice at Alliance, Nebraska, for transmission through the mails as second-class matter.

Subscription, \$1.50 per year in advance.

The circulation of this newspaper is guaranteed to be the largest in western Nebraska. Advertising rates will be furnished on application. Sample copies free for the asking.

THIS PAPER REPRESENTS FOREIGN ADVERTISING BY THE

AMERICAN PRESS ASSOCIATION

GENERAL OFFICES
NEW YORK AND CHICAGO
BRANCHES IN ALL THE PRINCIPAL CITIES

THURSDAY, AUGUST 24, 1911

ANNOUNCEMENT



J. B. KNIEST

Democratic-People's Independent candidate for county clerk, Box Butte county, Nebr.

Investigation of my qualifications solicited, and your vote will be appreciated.

CALL FOR MEETING

Members of the Democratic County Central Committee and democratic candidates in Box Butte county are requested to meet in W. S. Ridgell's office in Alliance, Nebr., at 2 p. m., on Saturday, Sept. 2, 1911.

W. S. RIDGELL,
Chairman County Central Committee.

THE ARIZONA VETO

We have read a good deal already regarding President Taft's veto of the bill for the admission of Arizona as a state, but we have seen nothing that presents the true inwardness of the matter more concisely than the following editorial from the Omaha Daily News, which by the way is an independent paper:

Let's get this Arizona veto business through our heads. Never mind about the recall of judges. It is not the important thing.

Arizona as the territory was ruled by carpet bag governors and judges appointed at Washington on the "recommendation of local party leaders". These were the independent judges who cannot be recalled.

Both parties were absolutely controlled by an unholy alliance composed of the Santa Fe railroad, the Southern Pacific railroad, the Phelps-Dodge outfit, the odorous ex-Senator Clark of Montana and last, but not least, the ever-present Guggenheims.

Frank Hitchcock, postmaster general, friend of Ballinger and of Morgan-Guggenheim, was to be the political boss under statehood and was to be the first senator.

The people of the territory rebelled. Party lines were broken. They adopted popular primaries to escape party collars.

When the statehood enabling bills were passed over a year ago, Cannon and Aldrich were in control of house and senate and Ballinger and Hitchcock were advisers at the White house on matters pertaining to the far west.

So it was written in the law FOR THE FIRST TIME that in electing delegates to their constitutional convention the people could not use the popular primaries.

But they smashed the bosses' slates and elected their own people in spite of the unholy alliance.

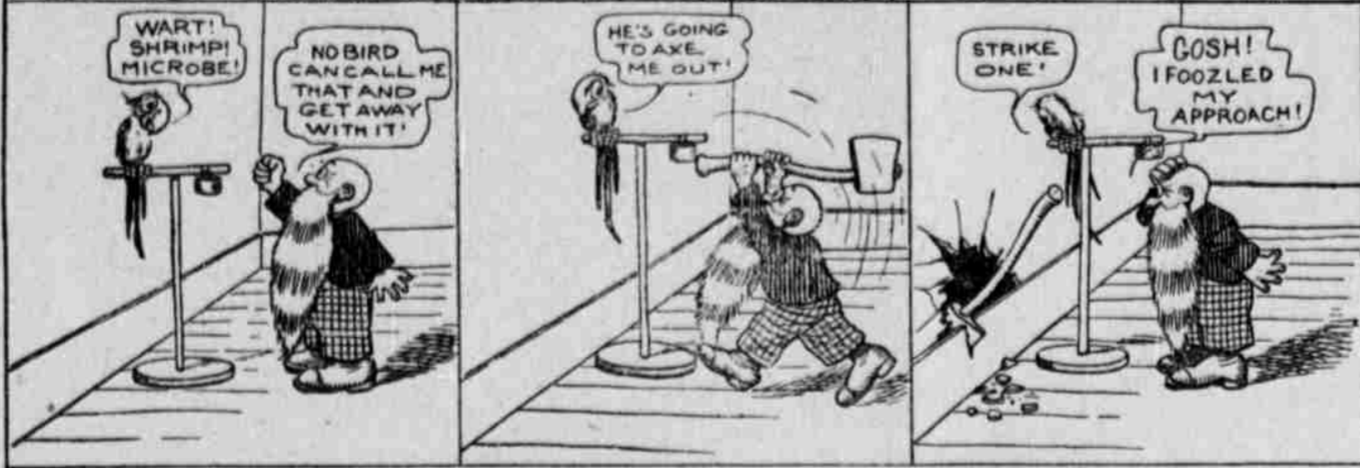
Fearing this, the railroads-smelter combine had congress provide, ALSO FOR THE FIRST TIME IN HISTORY, that the new constitution must be approved by congress and the president.

The new constitution was written. It was fought by the Guggenheims, the Hitchcocks, the railroads. A chain of newspapers was geared up to fight its ratification. The territory was flooded with orators—and funds, but BY A VOTE OF THREE TO ONE, THE PEOPLE RATIFIED their constitution.

Cannon and Aldrich were still on

THE OUTLET

PERPETRATED BY WALT McDOUGALL



the job, and the constitution was not accepted. Then Cannon was de-throned and Aldrich ousted. The new congress met.

The constitution of Arizona was accepted by congress, but it was provided that once more the recall of judges be submitted to popular vote.

AND THAT IS WHAT TAFT HAS VETOED—Not the recall, but the right of the people who have already voted three to one for their constitution to vote on it again.

Taft's position is simply this: he uses his power as president to say to the people of Arizona:

"YOU shall not decide for yourselves what rights you shall have under your own constitution. I, Taft, am opposed to the recall of judges, having been one myself, and as I happen to be president, I'm going to use the veto to prevent Arizona from becoming a state unless they do what I want them to do in the making of their constitution."

That is the act of an autocratic czar, rather than of the elected president of a free republic.

JUDGE JAMES R. DEAN

The following clippings from a few Nebraska newspapers give a correct estimate of the character and ability of Judge James R. Dean of Broken Bow, democratic and people's independent nominee for judge of the supreme court. It affords us pleasure to publish, and most heartily second, these endorsements. We could print many more similar to the following, but these show the sentiment toward Judge Dean of the newspapers that sincerely advocate "Equality before the law."

Ord Weekly Journal: Judge Dean made a good record while on the supreme bench two years ago and merits a full elective term.

The Commoner: Judge Dean wrote the dissenting opinion in the non-partisan case. That opinion has been printed in full in the Commoner and has been accepted by lawyers generally as a clear cut judicial document while its logic and general high tone has commanded for it the respect of men of all political parties.

Omaha World-Herald: Judge Dean was a member of the supreme court for one year and during that time he wrote a number of important decisions, but his greatest service on the bench possibly consisted in a number of strong dissenting opinions which he filed in opposition to the opinions of his republican colleagues. During the time he was on the bench numerous political questions came before the supreme court. The value of a bi-partisan court was indicated in the result, Judge Dean's searching dissesents showing up the weakness of some of the partisan opinions filed by the majority of the court.

Custer County Beacon: His popu-

larity in this section of the state is well known. The comment of other papers over the state is, however, pleasing to his many friends and supporters here. In the state Judge Dean's dissenting opinions attracted, perhaps, as much favorable comment as Judge Harlan's dissenting opinions in the Standard Oil and Tobacco Trust cases. At the election two years ago in a total vote of almost two hundred thousand in the state, he was defeated for the supreme bench by only a little over 2,000 votes. He carried Custer county by over 500 majority. When he was on the bench he was called "The Insurgent Judge." In him the common people have a man who will stand for their rights.

Hastings Democrat: His nomination and election should be the desire of every democrat. He is a clean, capable man.

Kearney Democrat: Judge Dean occupied a seat on the supreme bench of this state for one year, and during that brief period he developed such a remarkable degree of superb ability for always being found fairly, squarely, fearlessly and unequivocally, upon the side of right, regardless of who was upon the wrong side of the issue in that court, that he won a place in the hearts of the common people of the state. Several of Judge Dean's opinions were masterpieces and for some of them he was called an "insurgent" member of the supreme bench. Every sober-minded voter in the state can well afford to cast his vote for him. He is clean, honest and honorable and as a member of the court his decisions were always fair.

RETURNS FROM ARIZONA

Miss Josephine Hampton returned Sunday morning after an absence of two and a half months from Alliance, two weeks of the time being spent at Los Angeles, and the remainder with her friend, Miss Minnie Reed, at Phoenix, Arizona. Miss Hampton is loud in her praises of the city of Phoenix and surrounding country, thinking that the choicest spot of all the places she has been privileged to visit.

She was accompanied on her return by Miss Minnie Reed, daughter of Mr. and Mrs. A. S. Reed, who were formerly residents of Alliance. Miss Reed expects to visit friends here until the latter part of October.

COME FROM IOWA

Life's enjoyments have been greatly increased for J. C. Schomaker, manager of the Alliance Steam Laundry, by the arrival last week of his mother and three sisters, Mrs. Mary S. Schomaker and the Misses Ida, Rita and Marcella. They came from Ft. Madison, Iowa, to make their home in this city. The Herald is glad to extend to them, in behalf of Alliance-ites, a cordial welcome. The three Misses Schomaker will attend St. Agnes Academy upon the opening of school.

Good pictures of the cyclone can be secured from Harvey Meyers, Alliance, or by calling at Holsten's Drug Store.

36-2*

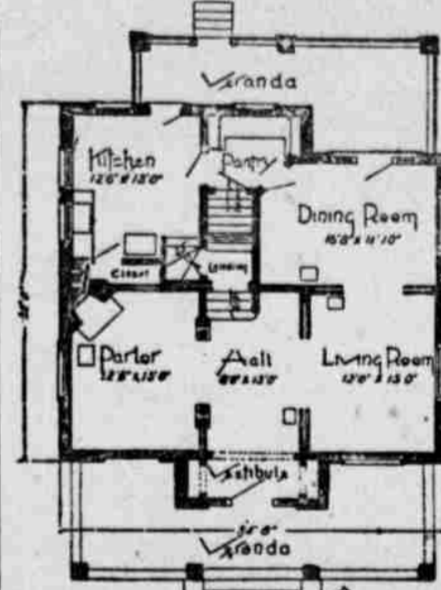
A Novelty In Concrete.

Very Desirable Interior Arrangement—Cost Complete About \$4,000.

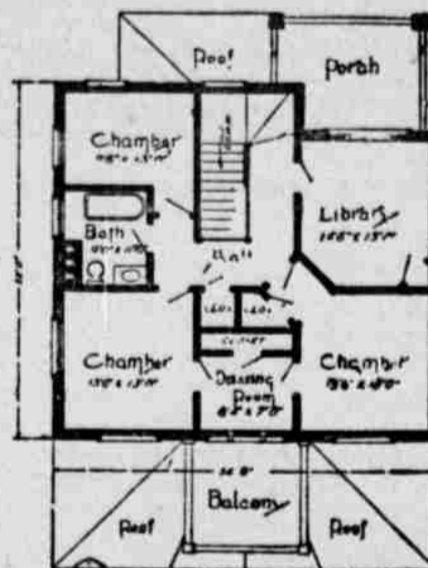
Copyright, 1909, by the Thompson Architectural Company, Olean, N. Y.



PERSPECTIVE VIEW—FROM A PHOTOGRAPH.



FIRST FLOOR PLAN.



SECOND FLOOR PLAN.

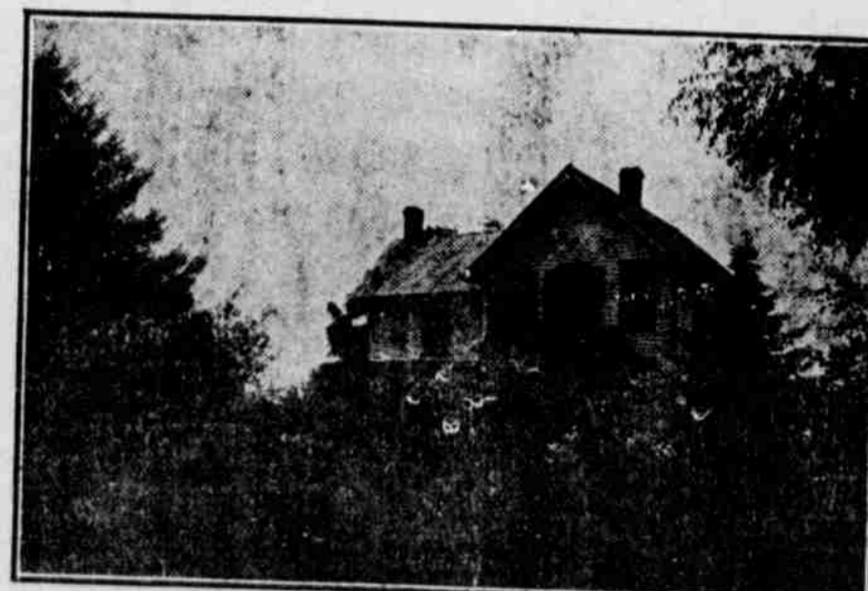
The above photograph shows a design in which the cement block and cement brick are combined with pleasing effect. The structure has the appearance of solidity, yet the upper story is light and cut with graceful lines. Size 32 by 35 feet, about, exclusive of front and rear projections. The basement and first story above grade are of rock face cement blocks, natural cement gray color, and the second story is built of frame with a veneer of red cement brick. Variation in color effect can be had by making the water table, belt course dividing the blocks and bricks, the window sills and caps and all corner blocks of bluestone. The contrast in color between the red brick and the gray block is striking and agreeable, giving a life to the exterior which the photographer cannot reproduce. The rooms are all of good size and well arranged for convenience. Estimate of \$4,000 includes furnace heat and plumbing.

THE THOMPSON ARCHITECTURAL COMPANY.

THE HOME BEAUTIFUL

ORNAMENTAL EFFECT OF A FEW TREES AND SHRUBS PROPERLY PLANTED

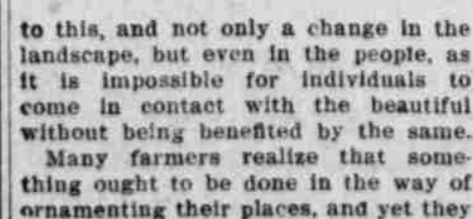
(By V. V. WESTGATE, Department of Horticulture, University of Nebraska.)



One can scarcely imagine a farm home more restful and inviting than the one pictured at the beginning of this article, and yet it is not expensive in dollars and cents to obtain a farm home similar to this. It is only a matter of time. The shrubs and trees shown, the value of which can now be scarcely estimated, cost in the beginning but a very few dollars and the house is of simple inexpensive design. What a change we would have in our Nebraska landscape if every farm house formed part of a picture similar

do not know exactly what to do. For that reason a few rules on what to accomplish may well be given.

As trees form part of the permanent effect of the place, be careful to plant them in their proper locations and with care. In using trees, first provide for a windbreak by planting evergreen trees, such as the Austrian or Scotch pine, as an evergreen gives the needed winter protection. Also use a few trees near the house for shade and a few to the rear in order to give the proper background or "setting" to the house. After the trees are located, we are ready for planting the shrubs. Place a few of the same next to the house in order to break the architectural effect of the house and also a few to the sides, as shown in the accompanying view. When making plantings of the place remember there is nothing finer than a good lawn. For that reason keep the same open by locating the plants more to the sides and at all times preserve a good view to and from the house.



Contrast the first view with the second. Which type of place would you choose to make your home? It is true there is a seemingly great difference between them and yet if a dozen trees and twice as many shrubs were properly planted on any place similar to the second one shown it would make an effect comparable to the first.

to this, and not only a change in the landscape, but even in the people, as it is impossible for individuals to come in contact with the beautiful without being benefited by the same. Many farmers realize that something ought to be done in the way of ornamenting their places, and yet they

Light Weight Coats at
Special Prices at

BOGUE'S

Why Not Get the Best?

Johnson's
Home-Made Candy

At The
MODEL CANDY KITCHEN

We carry also a fine line of the best factory candy at prices lower than the same can be purchased elsewhere